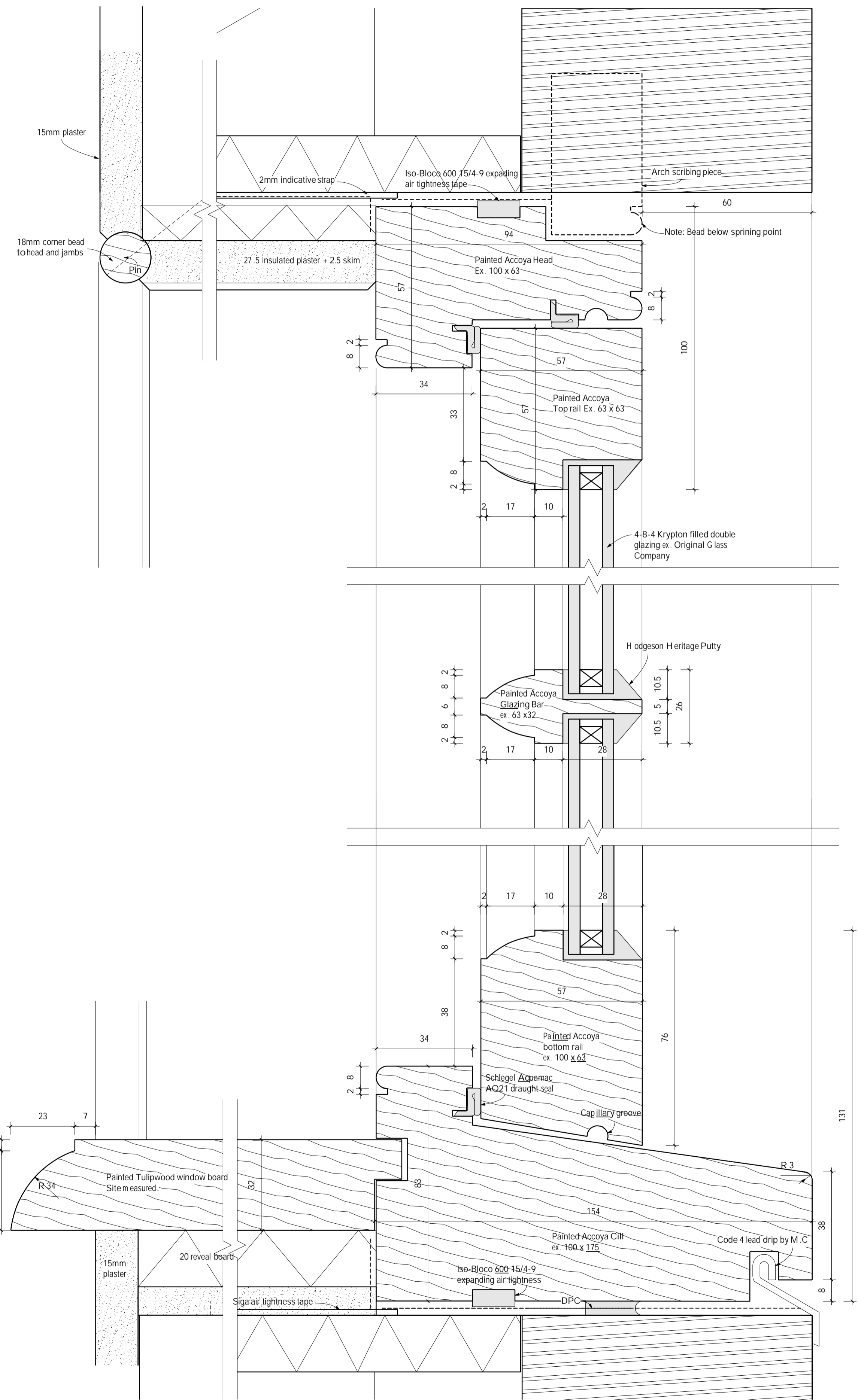
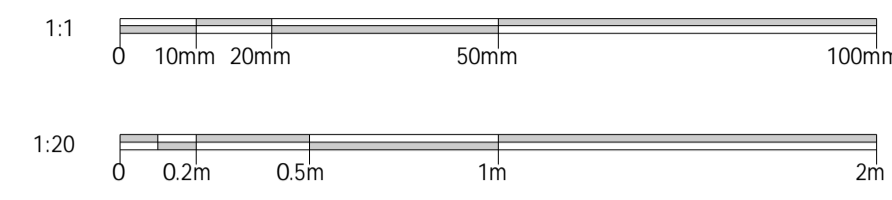
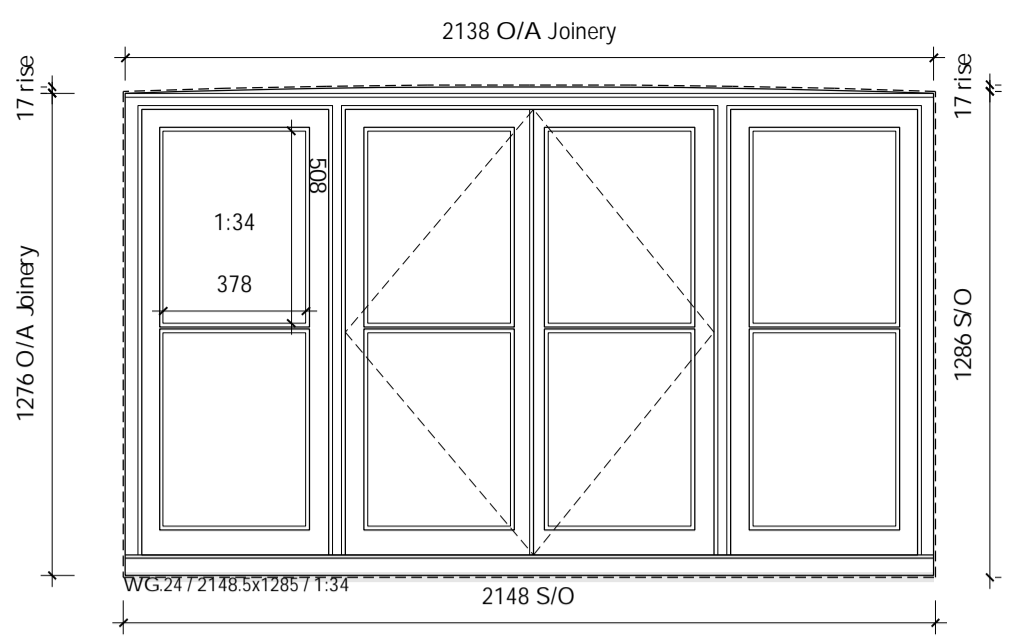


do not scale from this drawing except for planning purposes. any discrepancies are to be reported to the architect. the contractor is to check all building and site dimensions prior to ordering materials or construction. this drawing is to be read in conjunction with engineers' and other specialist drawings. copyright remains with the architect.

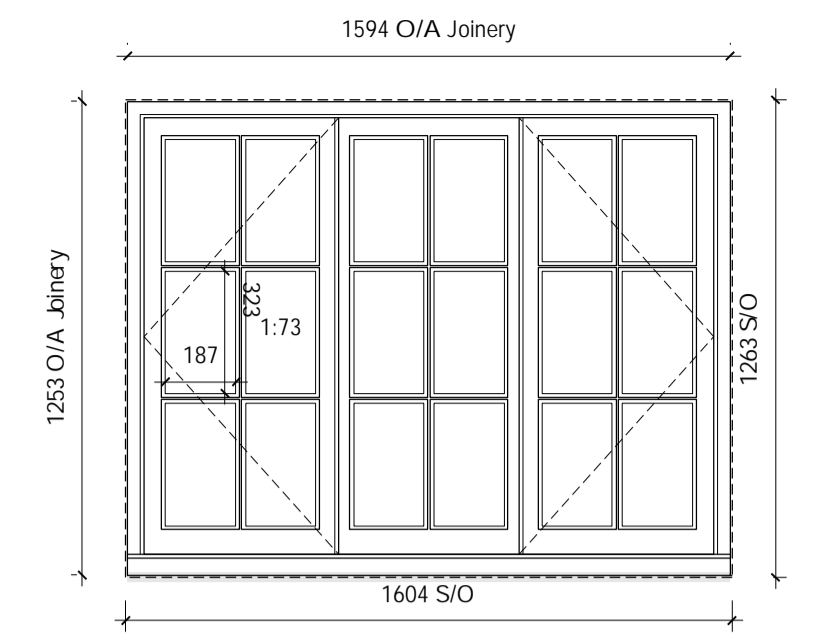
revisions
12.08.20YY AP TENDER



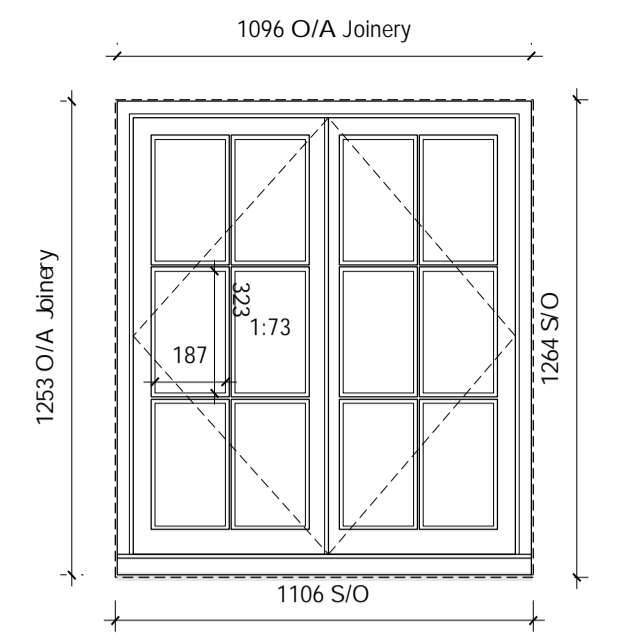
1 TYPICAL CASEMENT WINDOW Section detail, 1:1



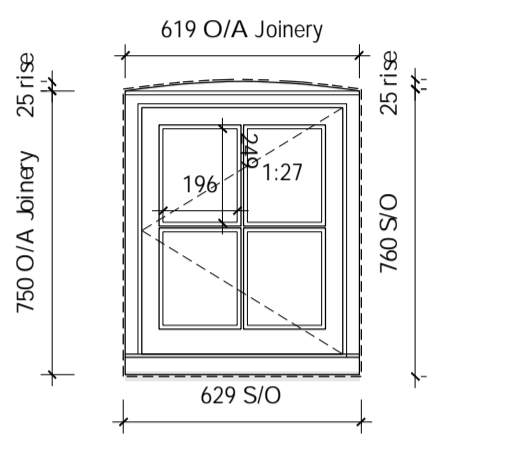
18 WG.24 ELEVATION 1:20



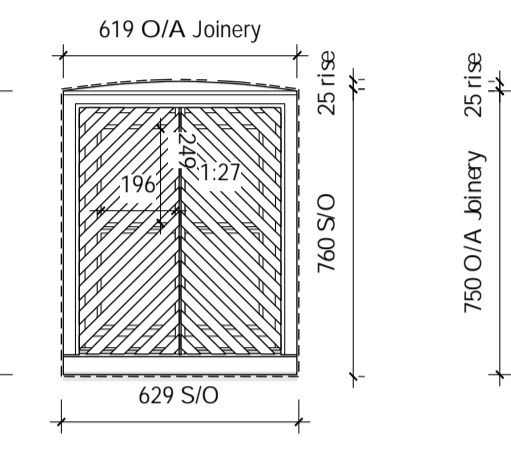
20 WF.04 ELEVATION 1:20



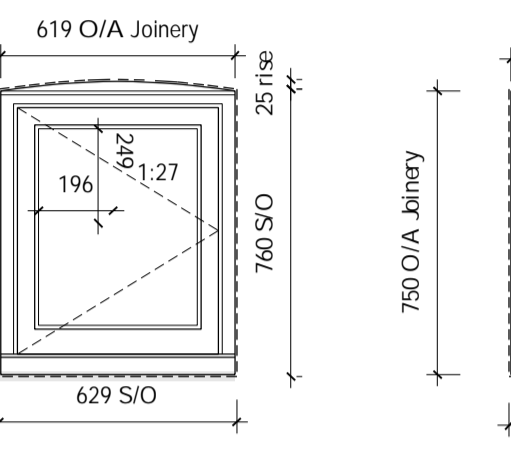
19 WF.06 ELEVATION 1:20



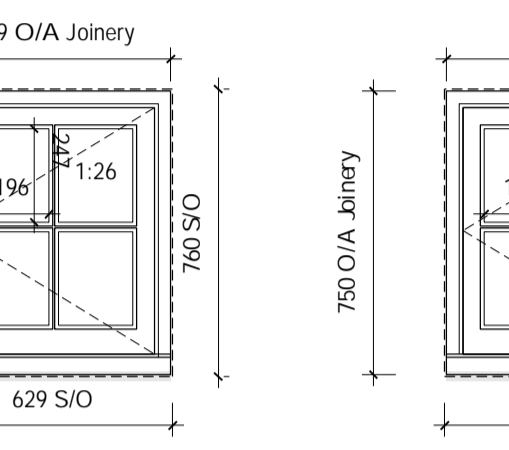
9 WG.22 ELEVATION 1:20



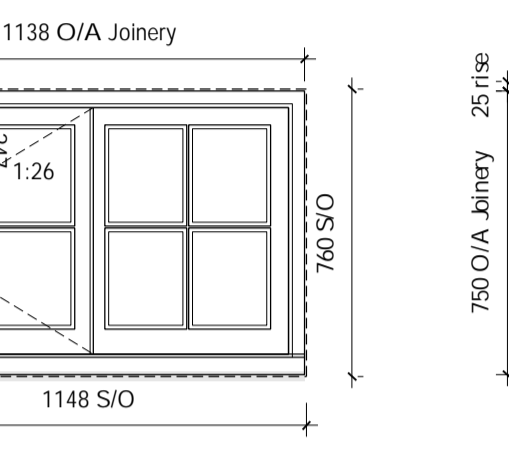
6 WG.23 ELEVATION 1:20



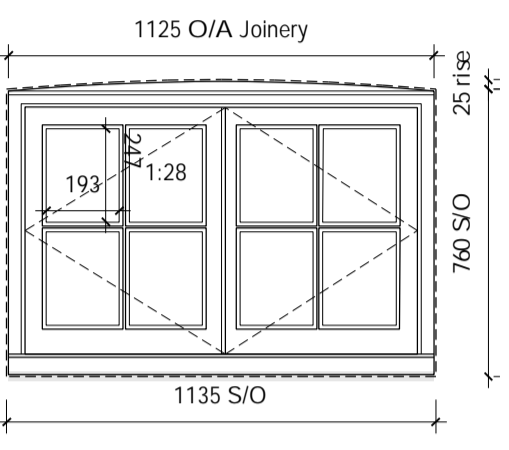
5 WG.28 ELEVATION 1:20



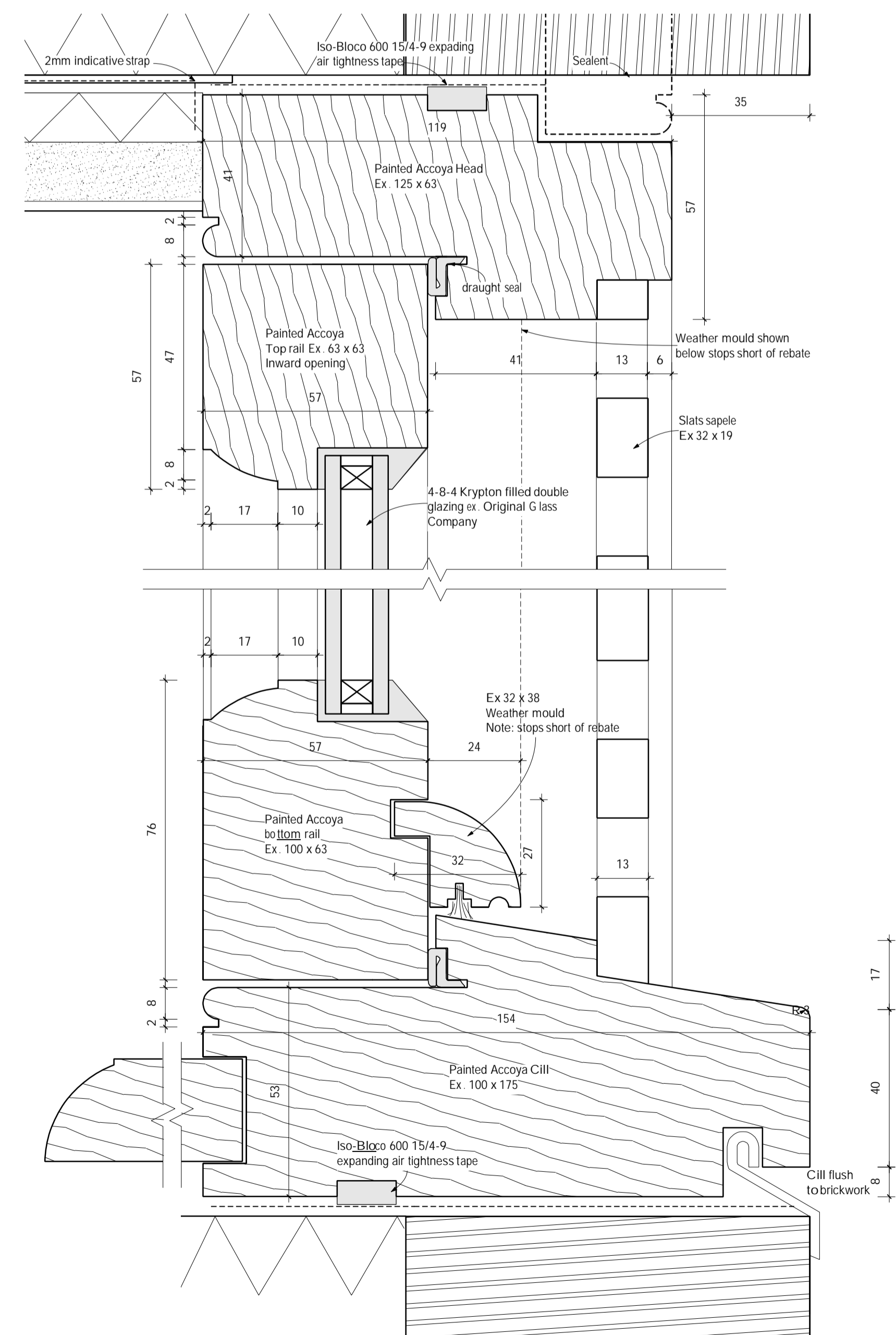
22 WG.35 ELEVATION 1:20



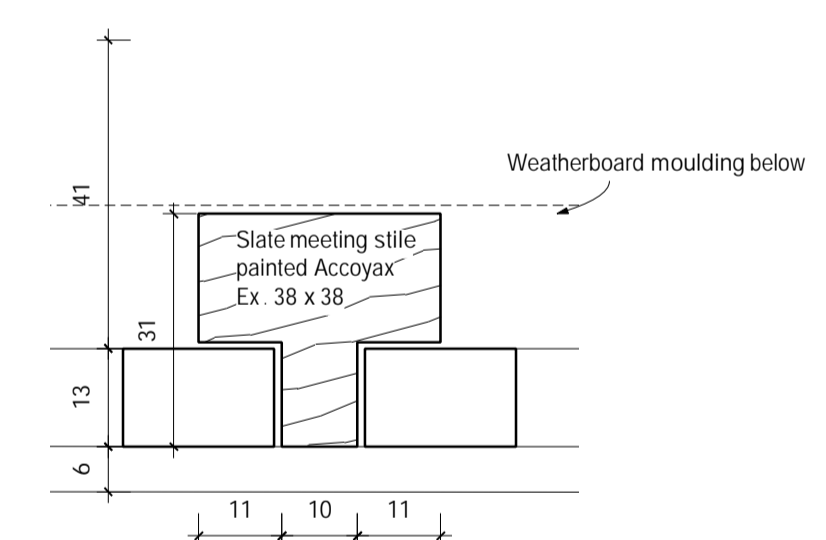
21 WG.33 ELEVATION 1:20



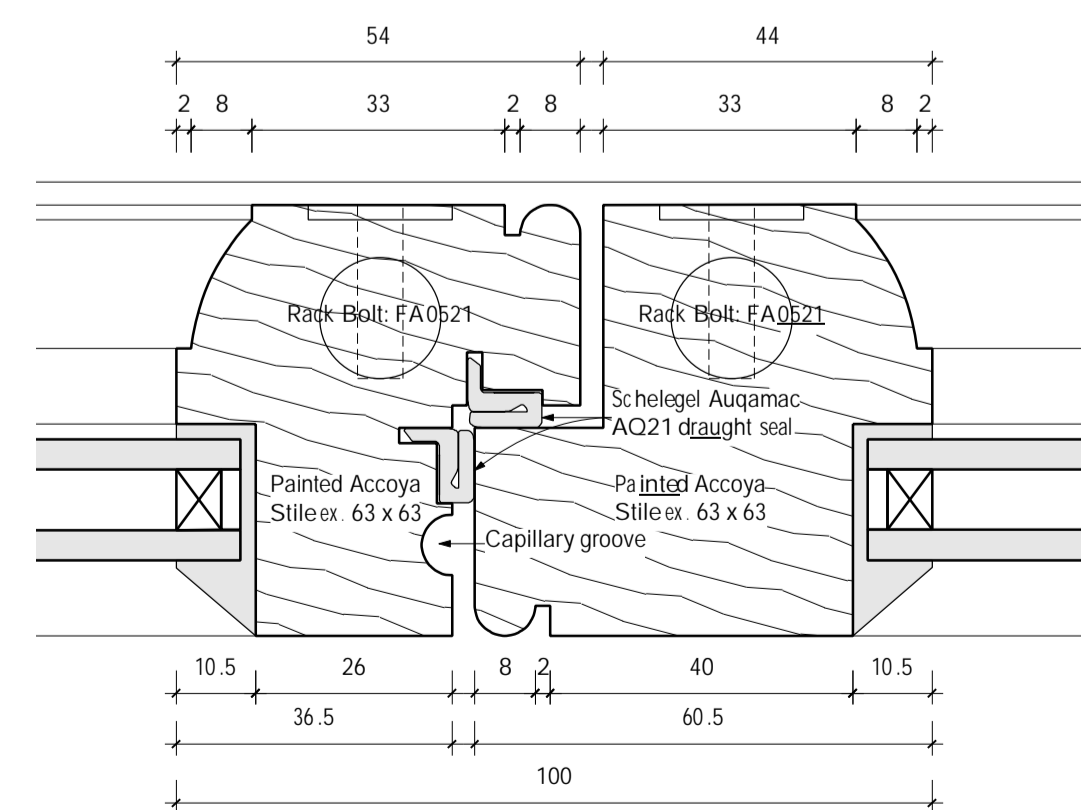
14 WG.38, WF.15 & 20 ELEVATION 1:20



2 WG.23 SLATTED WINDOW DETAIL Section detail 1:1



8 SLATTED WINDOW MEETING STILE Section 1:1



3 TYPICAL CASEMENT WINDOW Plan detail, 1:1

Hoare, Ridge & Morris
Architects

project	The Pound Higham
drawing title	Casement Window Joinery Details
scale	1:1/1:20 at A1
status	TENDER
drawing no.	177.401