

Royal Pavilion Gardens

Materials, Furniture & Planting Palette

Ref: 725-Materials Palette

Date: August 2023



Bonded gravel surfacing (to renew / match existing)

Location: Across all existing paths

Product: Fibredec (or approved similar)

Manufacturer: Colas (tbc)

Colour: Buff



Resin Bound Gravel

Location: Surfacing within Root Protection Areas

Product: Addaset (or approved similar) on Cellweb cellular confinement system (or approved similar)

Manufacturer: Addagrip (tbc)

Size: 6mm

Colour: Buff



Granite set threshold

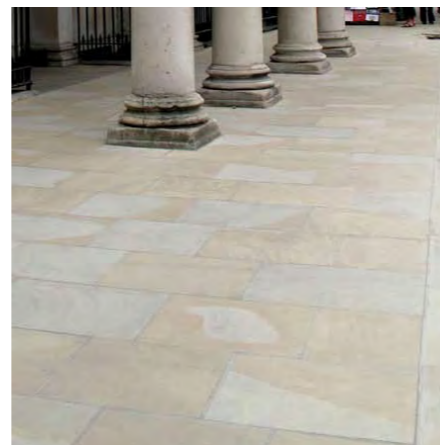
Location: Key entrances and thresholds

Product: Lightly tumbled granite setts

Manufacturer: CED Quarries (tbc)

Size: 200 x 100 x 50mm

Colour: Mid grey



Yorkstone flag

Location: Cafe terrace, seating benches & thresholds

Product: Yorkstone or approved similar natural sandstone

Manufacturer: CED Quarries (tbc)

Size: 600 x 600 x 50mm

Colour: Buff



Pop-up power supply

Location: Various locations

Product: In ground power unit

Manufacturer: Pop-up power supplies

Size: 700 x 500mm

Colour: Cover to be filled to match surface finish



Mild steel edging

Location: Across all existing paths

Product: Fort (or approved similar)

Manufacturer: Kinley Systems (tbc)

Size: 4mm thick

Colour: Natural mild steel



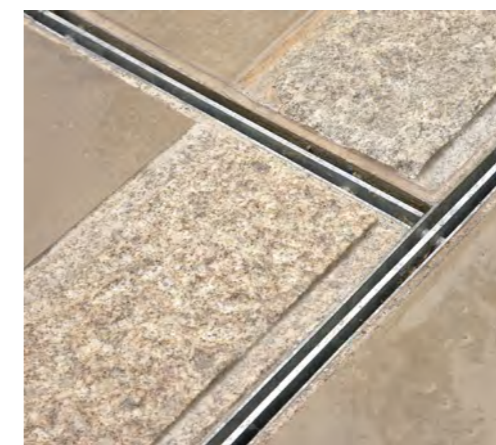
Stone walls / plinths

Location: Gardeners Compound, Outdoor Learning space

Product: Yorkstone or similar approved natural stone

Manufacturer: CED Quarries (tbc)

Colour: Buff



Drainage Channel

Location: Cafe terrace

Product: Slot drain

Manufacturer: Marshalls (tbc)

Colour: Galvanised metal



Seating bench

Location: Across garden
 Product: Custom
 Manufacturer: Lost Art or approved equal
 Size: 2.4m length
 Colour: 'Invisible Green' (tbc)



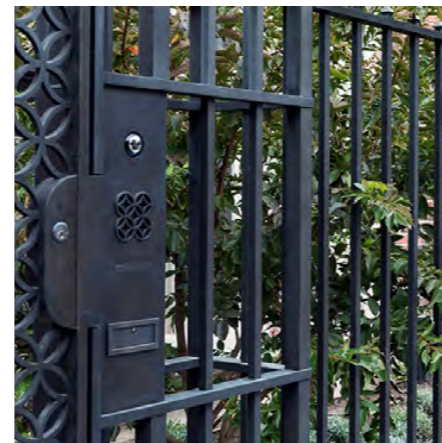
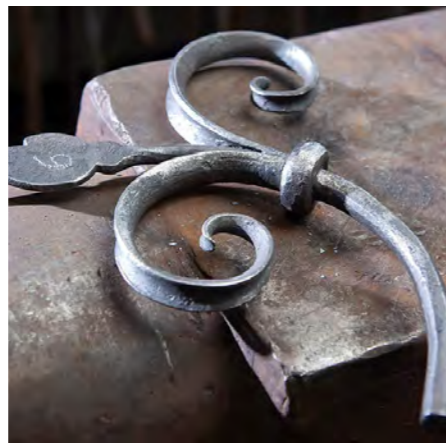
Estate railing (internal)

Location: Adjacent to Palace Place entrance. Low railing to planting beds
 Product: Metal estate railing
 Manufacturer: Lost Art or approved equal
 Size: 1100mm high & low 400mm high (to planting beds)
 Colour: 'Invisible Green' (tbc)



Cycle stand

Location: Adjacent to North gate entrance
 Product: Ribbon or similar approved
 Manufacturer: Furnitubes (tbc)
 Size: 750mm x 800mm high
 Colour: 'Invisible Green' (tbc)



Railing (external)

Location: To perimeter of gardens
 Product: N/A custom made metal railing with cast iron finials. Railing to match existing detail and railing on site by Palace Place
 Manufacturer: specialist blacksmith fabricator tbc
 Size: 2.1m high
 Colour: 'Invisible Green' (tbc)



Lighting column

Location: Existing light columns across the gardens
 Product: N/A Existing to be removed and refurbished to conservation architects detail
 Manufacturer: tbc
 Size: 6m height
 Colour: 'Invisible Green' (tbc)



Bollard

Location: Entrances
 Product: Sunderland Telescopic Bollard or similar approved
 Manufacturer: Marshalls (tbc)
 Size: 730mm x 135mm dia
 Colour: 'Invisible Green' (tbc)



Litter bin

Location: Across garden
 Product: Cast Iron litter bin
 Manufacturer: Lost Art or approved equal
 Size: 1100mm height, Ø600mm
 Colour: 'Invisible Green' (tbc)

Royal Pavilion Gardens | Principle Planting Palette



Principle Planting Palette

As identified in the Conservation Plan, the planting principles of the previous 1990's restoration are sound and should form the basis of any replanting of the existing beds.

Following further soil analysis detailed planting proposals will be developed using the following plants.

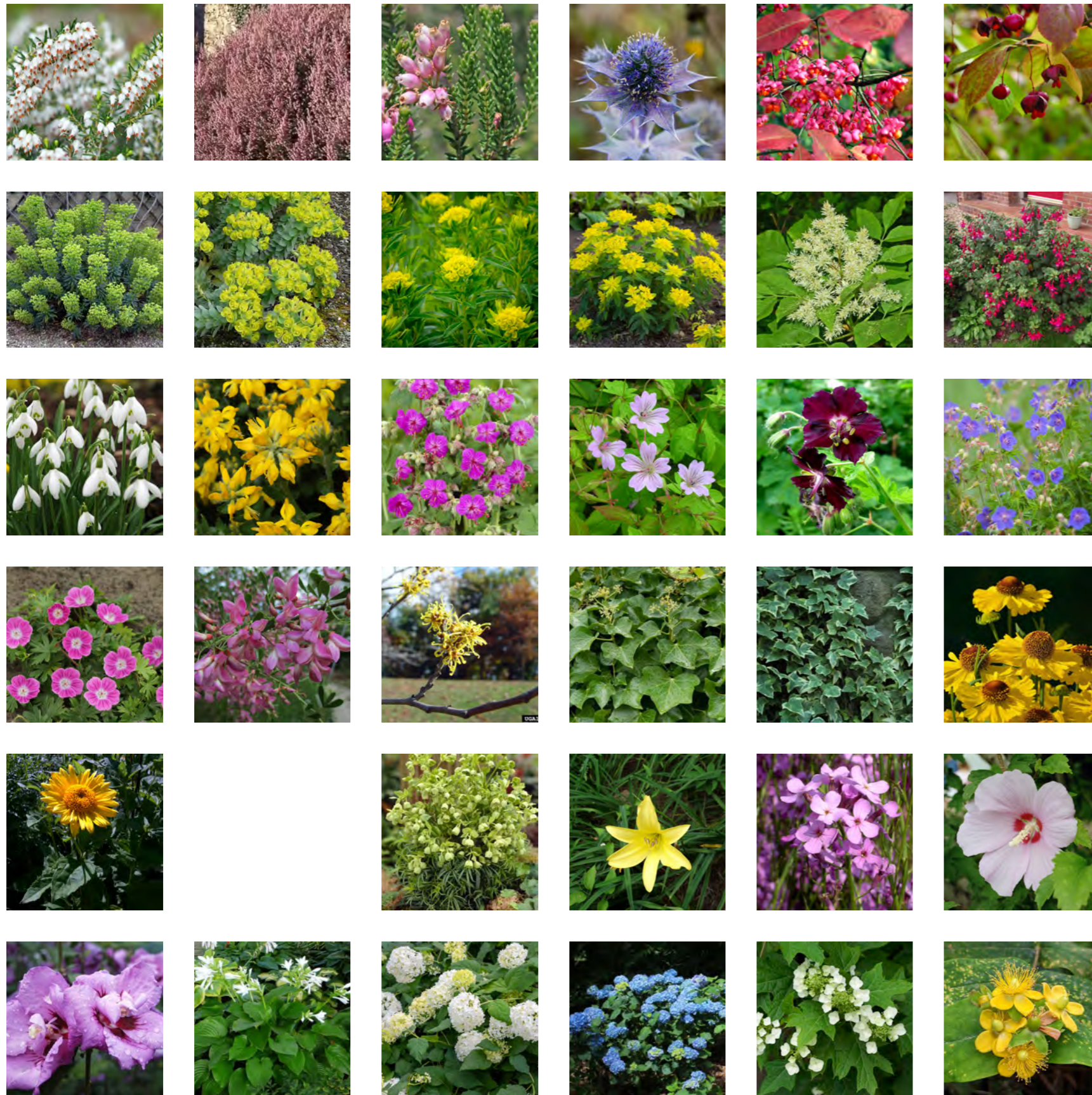
Scientific Name	Common Name
<i>Abelia chinensis</i>	Chinese Abelia
<i>Acanthus spinosus</i>	Bears Breeches
<i>Achillea filipendulina</i>	Yarrow
<i>Aconitum napellus</i>	Aconite
<i>Alcea</i>	Hollyhocks
<i>Althaea (single stem)</i>	Hibiscus
<i>Antirrhinum</i>	Snapdragons
<i>Aquilegia vulgaris</i>	Common Columbine
<i>Arbutus unedo 'rubra'</i>	Strawberry Tree
<i>Armeria maritima</i>	Sea Thrift, Lady's Cushion, Sea Pink
<i>Artemisia absinthium</i>	Wormwood
<i>Aster amellus</i>	Italian Aster
<i>Aster callistephus</i>	Annual Aster
<i>Aster ericoides</i>	Heath Aster
<i>Aster novae-angliae</i>	New England Aster
<i>Aster novi-belgii</i>	New York Aster
<i>Aster spectabilis</i>	Showy Aster
<i>Astrantia major</i>	Greater Masterwort
<i>Aucuba japonica variegata</i>	Variegated Spotted/Japanese laurel
<i>Baccharis halimifolia</i>	Grousel Bush
<i>Bellis perennis monstrosa</i>	Daisy
<i>Berberis vulgaris</i>	Barberry
<i>Bergenia crassifolia</i>	Bergenia, Pigsqueak
<i>Betula pendula</i>	Silver Birch
<i>Buddleja globosa</i>	Butterfly Bush
<i>Bupleurum fruticosum</i>	Shrubby Hare's Ear
<i>Buxus balearica</i>	Box Bush
<i>Buxus sempervirens</i>	Box Bush
<i>Camellia japonica 'morning glow'</i>	Common Camellia
<i>Campanula carpatica</i>	Tussock Bellflower
<i>Campanula persicifolia</i>	Bellflower
<i>Caragana arborescens</i>	Siberian Pea Shrub
<i>Centranthus ruber</i>	Red Valerian
<i>Centranthus ruber 'alba'</i>	Red Valerian (White Form)
<i>Cephalaria gigantea</i>	Giant Scabious
<i>Cercis siliquastrum</i>	Judas Tree

Royal Pavilion Gardens | Principle Planting Palette



Scientific Name	Common Name
<i>Chaenomeles japonica</i>	Japanese Quince
<i>Chrysanthemum UNKNOWN</i>	Mums, Chrysanthus
<i>Cistus albidus</i>	Rock rose
<i>Cistus creticus</i>	Rock rose
<i>Cistus cyprius</i>	Rock rose
<i>Cistus hirsutus</i>	Rock rose
<i>Cistus ladanifer</i>	Rock rose
<i>Cistus laurifolius</i>	Rock rose
<i>Cistus nigricans</i>	Rock rose
<i>Cistus populifolius</i>	Rock rose
<i>Cistus purpureus</i>	Rock rose
<i>Cistus salviifolius</i>	Rock rose
<i>Colutea arborescens</i>	Bladder-senna
<i>Coreopsis verticillata</i>	Tickseed
<i>Cornus sanguinea</i>	Dogwood
<i>Coronilla emerus</i>	Scorpion Senna
<i>Cotinus coggygria</i>	Smoke Bush
<i>Cotinus coggygria 'Royal Purple'</i>	Smoke Bush
<i>Crataegus oxyacantha</i>	Hawthorn
<i>Cupressus sempervirens</i>	Mediterranean Cypress
<i>Cytisus multiflorus</i>	White Spanish Broom
<i>Cytisus x purpureus</i>	Purple-flowered Rock Rose
<i>Dahlia 'Bishop of Ilandaff'</i>	
<i>Dahlia</i>	
<i>Daphne mezereum</i>	February Daphne
<i>Daphne odora</i>	Winter Daphne
<i>Delphinium elatum</i>	Candle Lakspur
<i>Delphiium ajacis</i>	Lakspur
<i>Dianthus alpinus</i>	Alpine Pink
<i>Dianthus barbatus</i>	Sweet William
<i>Dianthus 'Bats double red'</i>	Pinks
<i>Dianthus 'Old salmon clove'</i>	Pinks
<i>Digitalis purpurea</i>	Foxglove

Royal Pavilion Gardens | Principle Planting Palette



Scientific Name	Common Name
<i>Erica carnea</i>	Heather
<i>Erica mediterranea</i>	Heather
<i>Erica terminalis</i>	Heather
<i>Eryngium maritimum</i>	Sea Holly
<i>Euonymus europaeus</i>	Spindle
<i>Euonymus latifolius</i>	Broad-Leaved Spindle Tree
<i>Euphorbia characias</i>	Mediterranean Spurge
<i>Euphorbia myrsinites</i>	Myrtle Spurge
<i>Euphorbia palustris</i>	Marsh Spurge
<i>Euphorbia polychroma</i>	Cushion Spurge
<i>Fraxinus ornus</i>	Manna Ash
<i>Fuchsia magellanica</i>	Hardy Fuchsia
<i>Galanthus nivalis</i>	Snowdrop
<i>Genista hispanica</i>	Spanish Gorse
<i>Geranium macrorrhizum</i>	Big-root Cranesbill
<i>Geranium nodosum</i>	Knotted Cranesbill
<i>Geranium phaeum</i>	Dusky Cranesbill
<i>Geranium pratense</i>	Meadow Cranesbill
<i>Geranium sanguineum</i>	Bloody Cranesbill
<i>Halimodendron halodendron</i>	Salt Tree
<i>Hamamelis virginiana</i>	Witch Hazel
<i>Hedera helix</i>	Ivy
<i>Hedera helix</i> 'marginata'	Variiegated Ivy
<i>Helenium autumnale</i>	Sneezeweed
<i>Helianthus decapetalus</i> (x <i>multiflorus</i>)	Sunflower
<i>Helianthus scaberrinus</i>	
<i>Helleborus foetidus</i>	Christmas Rose/Stinking Hellebore
<i>Hemerocallis flava</i>	Yellow Daylily
<i>Hesperis matronalis</i>	Dames Rocket
<i>Hibiscus syriacus</i>	Rose of Sharon
<i>Hibiscus</i> 'violet clair double'	Tree Hollyhock
<i>Hosta plantaginea</i>	Plantain Lily
<i>Hydrangea arborescens</i>	Smooth Hydrangea

Royal Pavilion Gardens | Principle Planting Palette



Scientific Name	Common Name
<i>Hypericum calycinum</i>	St. Johns Wort
<i>Hypericum prolificum</i>	Shrubby St. Johns Wort
<i>Iberis sempervirens</i>	Candytuft
<i>Ilex aquifolium</i>	Holly
<i>Ilex aquifolium 'argentea marginata'</i>	Holly
<i>Ilex aquifolium 'ferox'</i>	Holly
<i>Iris foetidissima</i>	Stinking Iris
<i>Iris japonica 'ledger's variety'</i>	Fringed Iris
<i>Iris versicolor</i>	Blue Flag
<i>Itea virginica</i>	Virginia Willow
<i>Jasminum humile revolutum</i>	Italian Jasmin
<i>Jasminum officinale</i>	Jasmin
<i>Juniperus chinensis</i>	Chinese Juniper
<i>Juniperus sabina</i>	Savin Juniper
<i>Kerria japonica 'flora-plena'</i>	Japanese Kerria
<i>Koelreuteria paniculata</i>	Golden Rain Tree
<i>Laburnum anagyroides</i>	Golden Chain
<i>Lamium orvala</i>	Balm-leaved Red Deadnettle
<i>Laurus nobilis 'angustifolia'</i>	Narrow-leaved Bay Tree
<i>Lavandula dentata</i>	French Lavendar
<i>Lavatera olbia</i>	Garden Tree Mallow
<i>Leycestrian formosa</i>	Pheasant Berry
<i>Ligustrum lucidum</i>	Glossy Privet
<i>Lilium tigrinum</i>	Tiger Lily
<i>Lonicera periclymenum 'belgica'</i>	Honeysuckle
<i>Lonicera periclymenum 'Serotina'</i>	Honeysuckle
<i>Lonicera tatarica</i>	Tatarian Honeysuckle
<i>Lunaria annua</i>	Honesty
<i>Lychnis chalconica</i>	Maltese Cross
<i>Lychnis flos-jovis</i>	Flower of Jove
<i>Lysimachia punctata</i>	Dotted Loosestrife
<i>Lythrum</i>	Loosestrife
<i>Magnolia tripetala</i>	Umbrella Magnolia

Royal Pavilion Gardens | Principle Planting Palette



Scientific Name	Common Name
<i>Monarda didyma</i>	Bee Balm
<i>Myosotis</i>	Forget-me-not
<i>Myricaria germanica</i>	
<i>Myrtis communis</i>	Common Myrtle
<i>Myrtis communis</i> 'tarentina'	Tarentina Myrtle
<i>Nandina domestica</i>	Heavenly Bamboo
<i>Narcissus poeticus</i>	Daffodil
<i>Narcissus pseudonarcissus</i>	Daffodil
<i>Nigella damascena</i>	Love-in-a-mist
<i>Paeonia daurica</i>	Peony
<i>Paeonia lactiflora</i>	Peony
<i>Paeonia officinalis</i> 'mascula'	Peony
<i>Paeonia officinalis</i> 'rubra plena'	Peony
<i>Paeonia peregrina</i>	Peony
<i>Papaver bracteatum</i>	Poppy
<i>Philadelphus coronarius</i>	Mock Orange
<i>Phillyrea latifolia</i>	
<i>Phlomis fruticosa</i>	
<i>Phlox paniculata</i>	
<i>Phormium tenax</i>	
<i>Phytolacca americana</i>	
<i>Picea glauca</i>	
<i>Pinus pinaster</i>	
<i>Pinus sylvestris</i>	
<i>Pittosporum tobira</i>	
<i>Potentilla fruticosa</i>	
<i>Primula vulgaris</i>	
<i>Prunus dulcis</i>	Common Almond
<i>Prunus laurocerasus</i>	
<i>Prunus laurocerasus</i> 'Otto luyken'	
<i>Prunus lusitanica</i>	Portuguese Laurel
<i>Pulmonaria</i>	
<i>Pyracantha coccinea</i>	

Royal Pavilion Gardens | Principle Planting Palette



Scientific Name	Common Name
<i>Rosa centifolia</i> 'Muscosa'	
<i>Rosa chinensis</i> 'mutabilis'	
<i>Rosa</i> 'common moss'	
<i>Rosa damascena</i>	
<i>Rosa damascena versicolor</i>	
<i>Rosa du roi a fleurs pourpres</i>	
<i>Rosa</i> 'Dutchess of portland'	
<i>Rosa eglanteria</i>	
<i>Rosa foetida</i> 'bicolor'	
<i>Rosa gallica</i> 'conditorum'	
<i>Rosa</i> 'petit lisette'	
<i>Rosa pimpinellifolia</i>	
<i>Rosa villosa</i>	
<i>Rosa virginiana</i>	
<i>Rosmarinus officinalis</i>	
<i>Rubus lacinatus</i>	
<i>Rubus odoratus</i>	Flowering Raspberry
<i>Ruscus aculeatus</i>	
<i>Salix</i>	Willow
<i>Salvia haematodes</i>	
<i>Sambucus nigra</i> 'Aurea'	
<i>Santolina chamaecyparissus</i>	
<i>Santolina pinnata</i> 'heapolitana'	
<i>Solidago canadensis</i>	Goldenrod
<i>Sophora japonica</i>	
<i>Sorbus aucuparia</i>	Mountain Ash
<i>Spartium junceum</i>	Spanish Broome
<i>Spiraea salicifolia</i>	Bridewort
<i>Symphoricapos orbiculatus</i>	Coralberry
<i>Symphoricarpos rivularis</i>	Snowberry
<i>Symphytum grandeflorum</i>	
<i>Syringa chinensis</i>	
<i>Syringa persica</i>	Persian Lilac