

All dimensions and levels are to be checked on site by the contractor prior to preparation of shop drawings and commencement of works on site.

Do not scale from this drawing.

This drawing and the copyrights and patents therein are the property of ig9 and may not be used or reproduced without prior written consent.

This drawing is to be read in conjunction with all relevant consultant's and/or specialist's drawings/documents and any discrepancies or variations are to be notified to ig9 Limited before the affected work commences.

Existing elevations of the front, side and rear of the property.

Window types A, B, E, J, K, L, O, V & W - single glazed timber casement windows.

Window type F - single glazed timber casements in a bay window.

Window types C, G, M, N, P, Q, R, S, T, U & X - single glazed timber sliding sash windows.

Window types D, H & I - single glazed timber sliding sash windows in a bay window.

Door 1 - Timber door
 Door 2 - Timber door and casement windows combination
 Door 3 - Timber glazed door



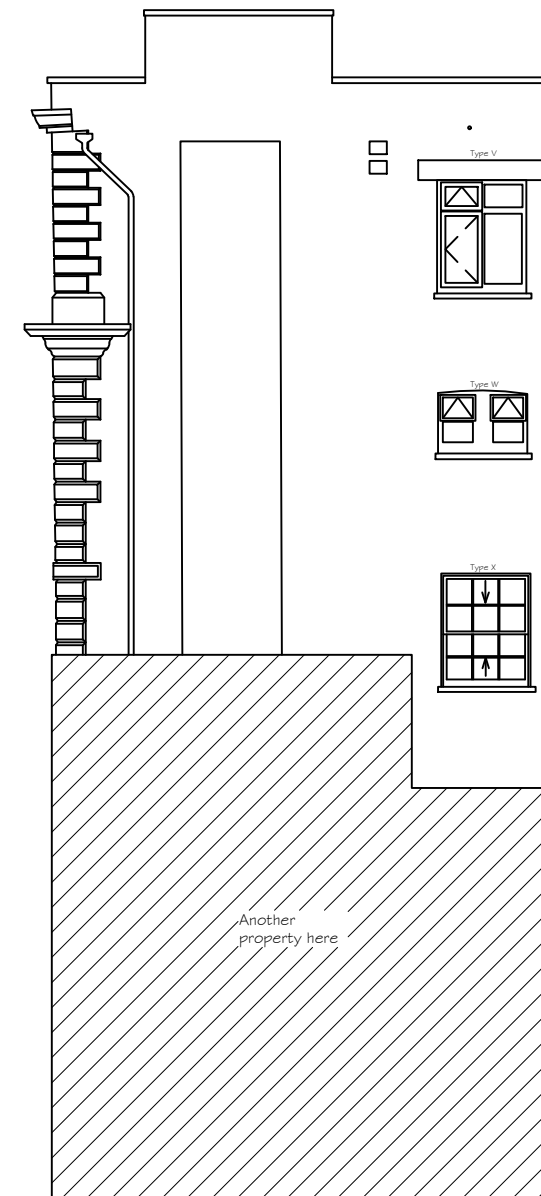
Datum 47,000m

NORTHEAST ELEVATION



Datum 47,000m

NORTHWEST ELEVATION



Datum 47,000m

SOUTHWEST ELEVATION

Rev	Date	Description
P1	Sept 2023	Planning Application

ig⁹ 11 Riverside Building
 Tnnty Buoy Wharf
 G4 Orchard Place
 London
 E14 0FF
 t. 0207 538 4646
 e. info@ig9.co.uk
 w. www.ig9.co.uk

Building Surveying Project Management Cost Consultants
 Consulting Engineers Principal Designer

Client
 Equans Regeneration Limited

Project
 167 Gloucester Terrace
 London
 W2 6DX

Title
 Existing Elevation

Scale 1:50@A1	Drawn By LT
Date September 2023	Checked By JB
Drawing No. 2223-102330-167GT-03	Revision P1