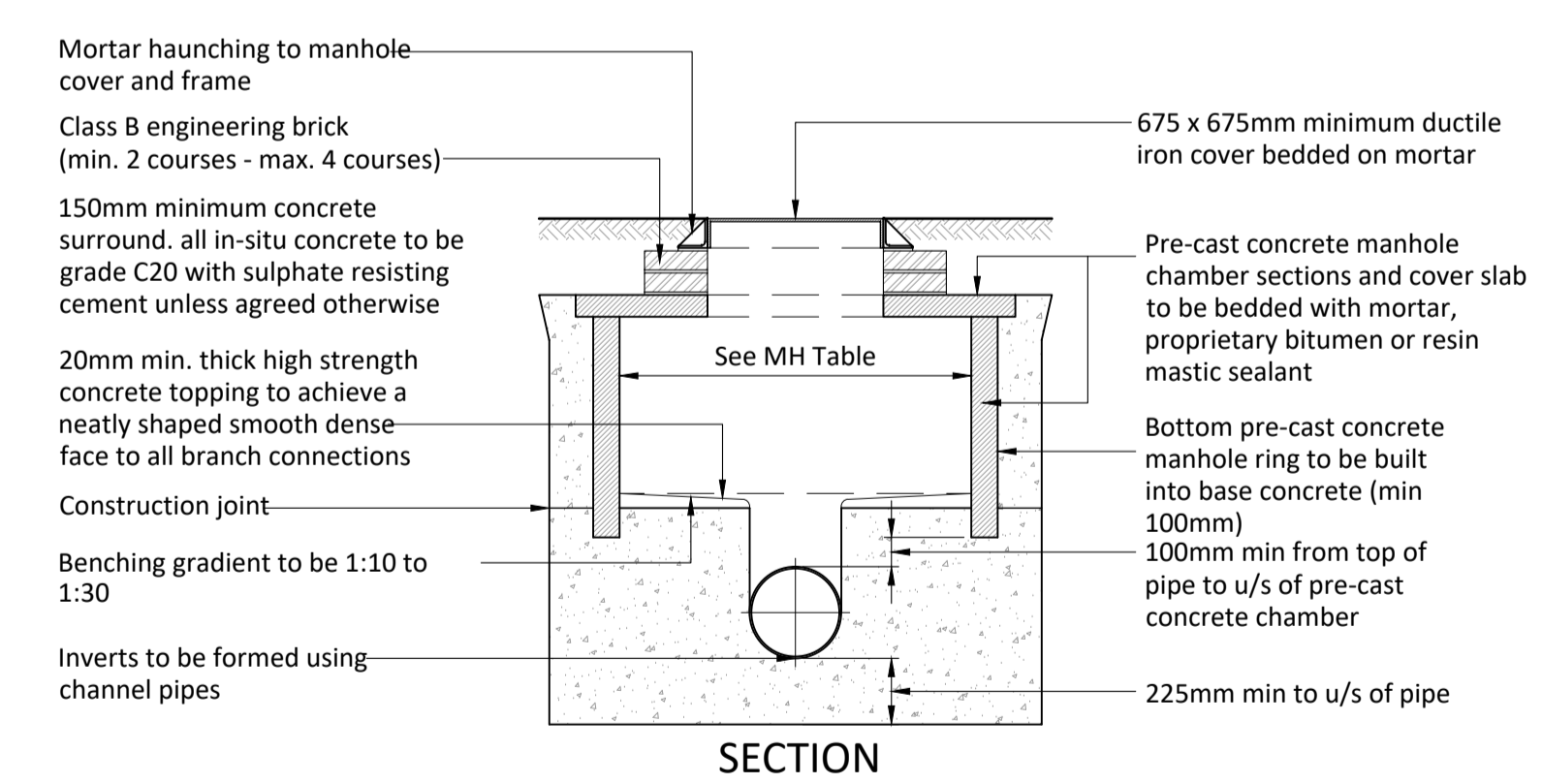
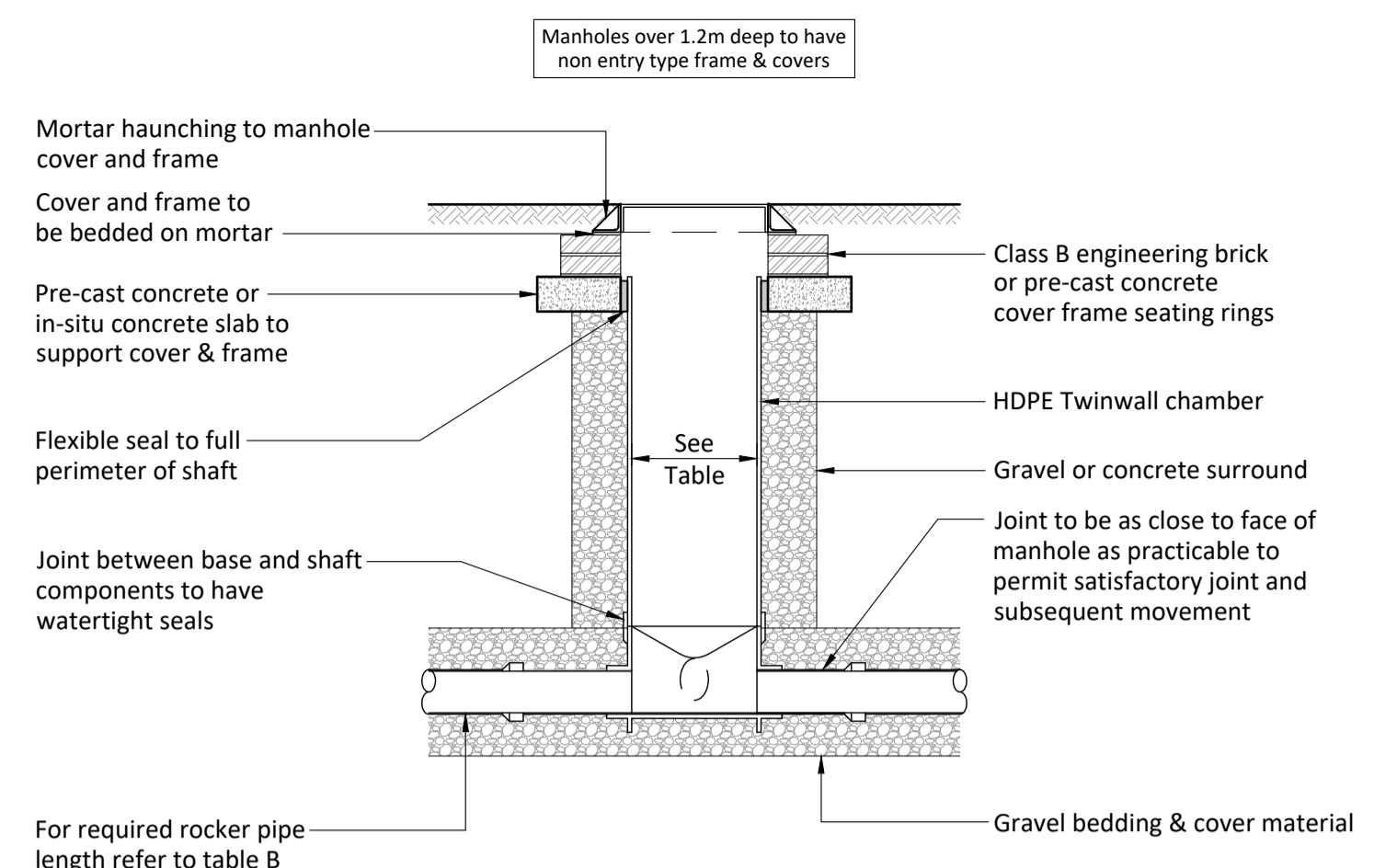


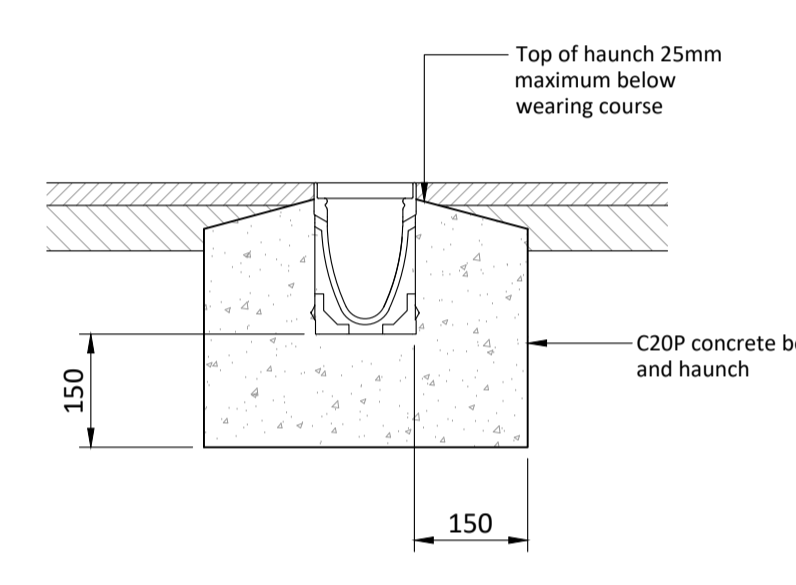
**Typical Type B Manhole Detail**  
3000mm maximum from ground level to soffit of pipe  
(Scale 1:25)



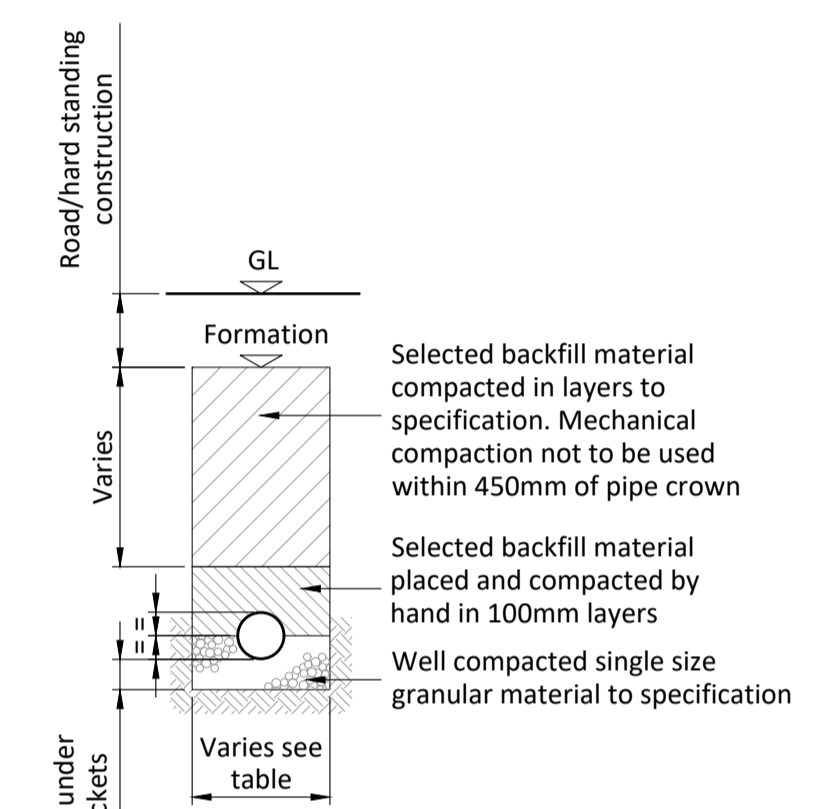
**Type B/1E Manhole Detail**  
(Scale 1:25)  
Depth from ground level to soffit of pipe less than 1500mm  
Plan as above (Type B)



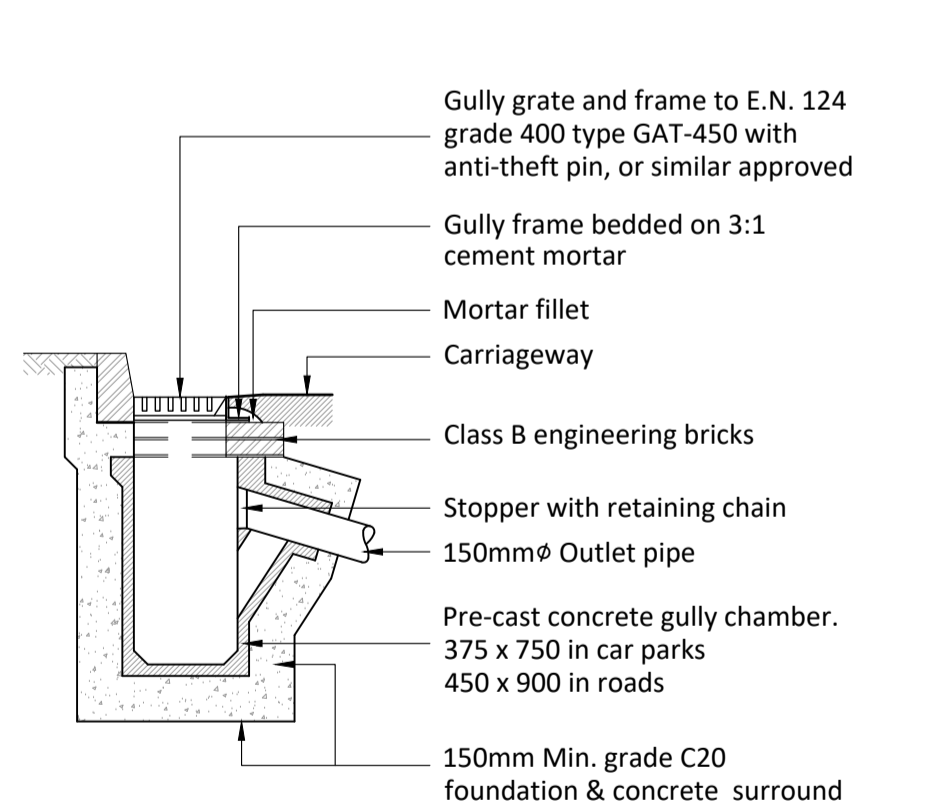
**Typical Type D Manhole Detail**  
(Scale 1:25)



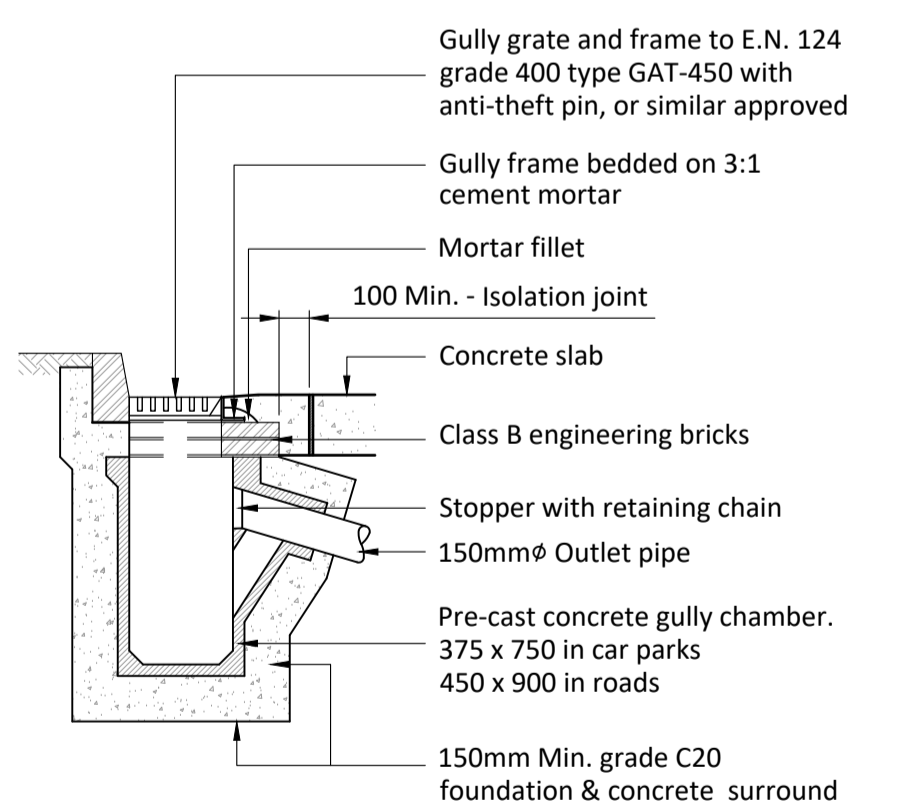
**Typical ACO Channel Detail**  
(In open areas)  
(Scale 1:10)



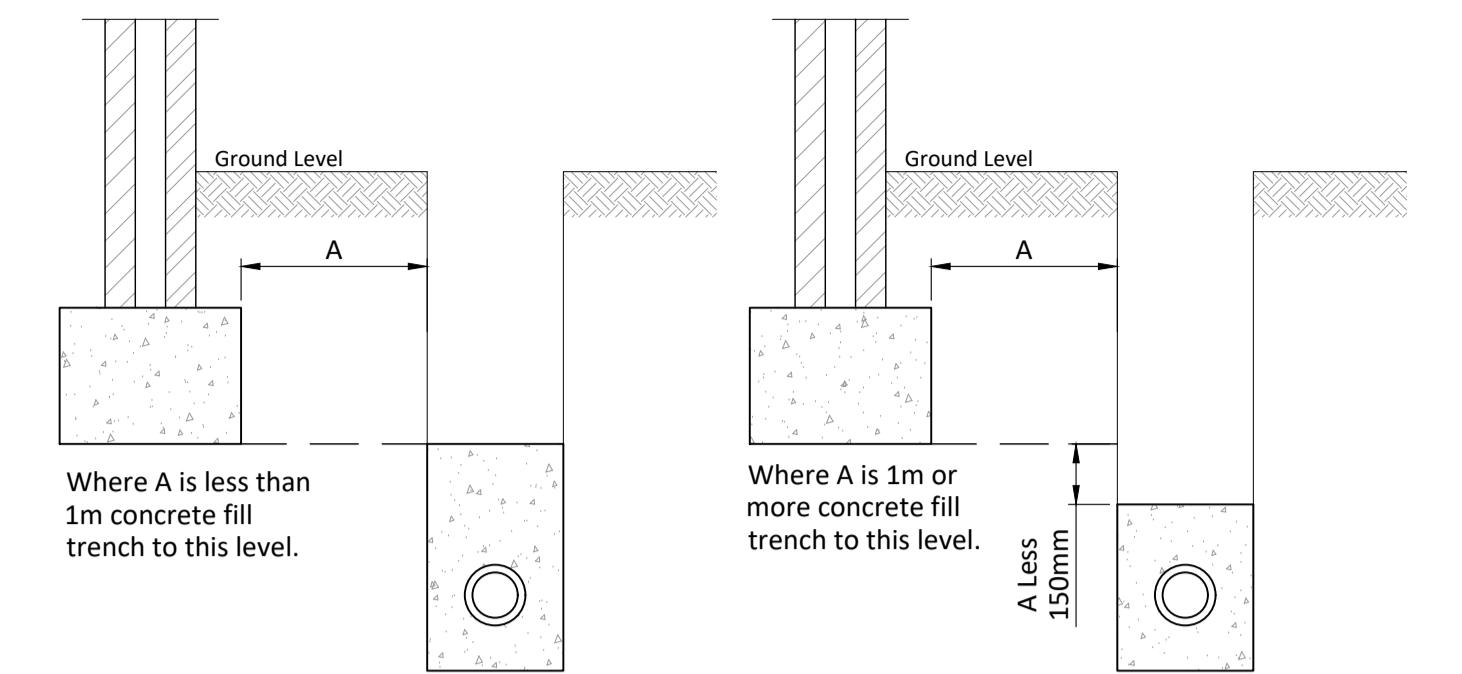
**Pipe Bedding Type B**  
(Scale 1:25)



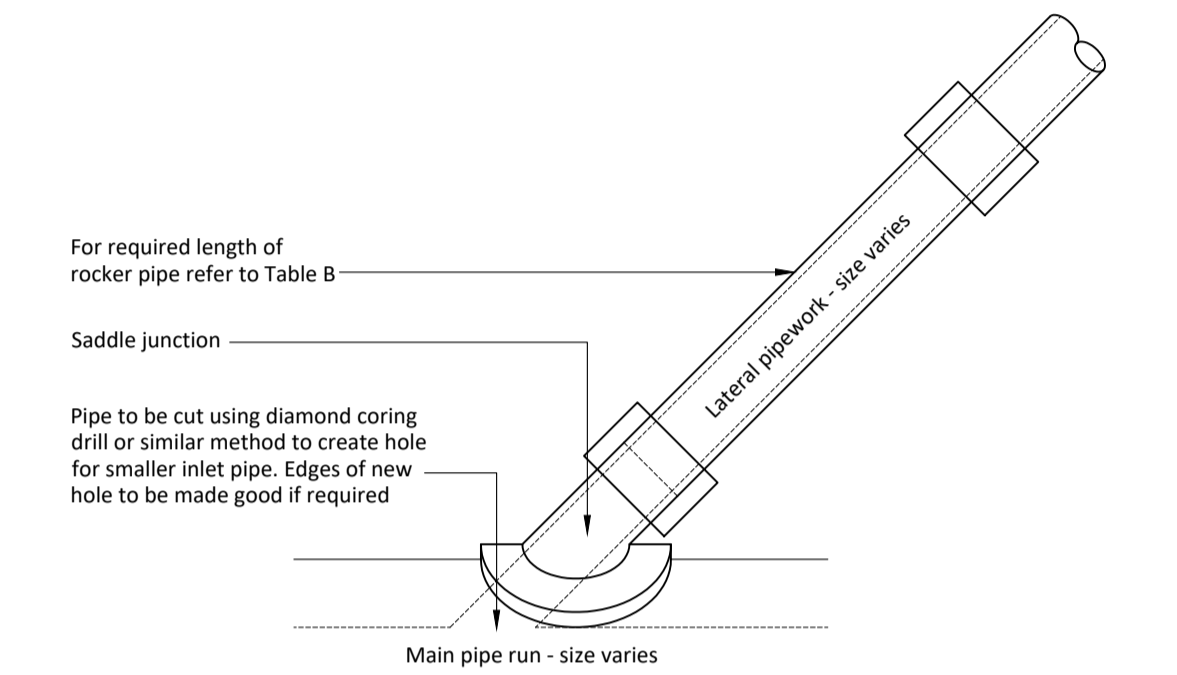
**Typical Gully Detail**  
(Scale 1:25)



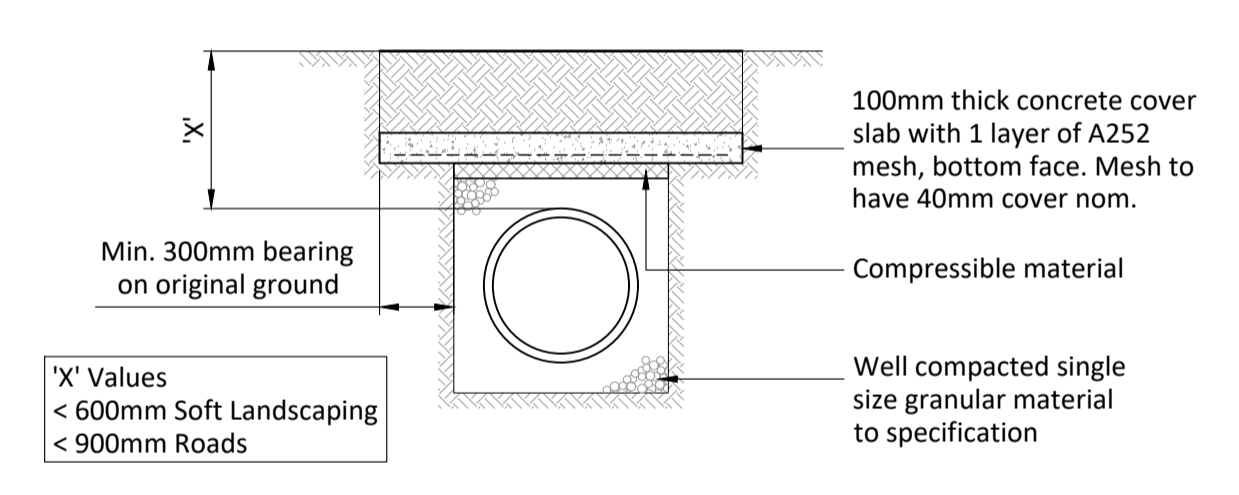
**Typical Gully in Concrete Hard Standing Detail**  
(Scale 1:25)



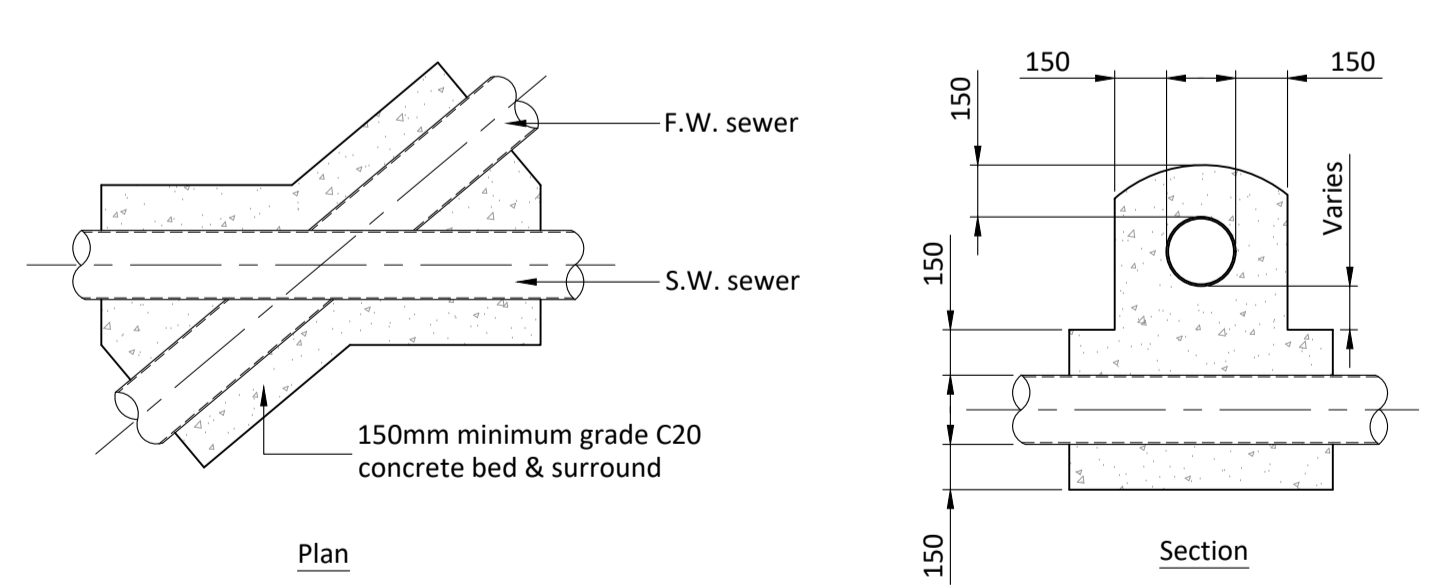
**Typical Concrete Surround To All Pipe Runs Near Buildings & Retraining Structures**  
(Scale 1:25)



**Plan on Branched Connection Detail**  
(Scale 1:10)



**Pipe Protection Detail - (Private)**  
(Scale 1:25)



**Typical Cross-over Detail to Foul and Surface Water Sewers**  
(Scale 1:25)

**Notes**

- For drainage layout & notes refer to drawing 171-53-500.
- This drawing is to be read in conjunction with all other relevant drawings.

Dia. of largest pipe in manhole (mm)	Internal diameter of manhole (mm)
Less than 375	1200
375-700	1500
750-900	1800
Greater than 900	Consult undertaker

Drain Ø (mm)	Effective length (m)
150-600	0.6
675-750	1.0
Over 750	1.25

Drain Ø (mm)	Width (mm)
100	450
150	600
225	700
300	750
375	1050
450	1150
525	1200
600	1350
675	1450
750	1500
825	1600
900	1900
975	2000
1050	2300
1200	2300
Over 1200	Dia. + 1000

Chamber Size	Manhole Depth <1.5m	Manhole Depth Equal to or >1.5m
900	675x675 Central	675x675 Central
1050	750x750 Central	675x675 Eccentric
1200	675x675 Eccentric*	675x675 Eccentric
1500	1200x675 Central**	675x675 Eccentric
1800-3000	1200x675 Eccentric	675x675 Eccentric

\* 1200x675 Specified in BS EN 752-3 but not recommended  
 Note: All measurement in mm UNO.  
 \*\* Openings sited over the channel with double twin 600x600 covers.  
 Sizes are as concrete pipe system association (CPSA) 'Technical Bulletin' issued Autumn 2004 for Kitemarked cover slab opening sizes.

Class	Test Load (T)	Typical Uses
A15	1.5	Pedestrian Areas Only
B125	12.	Car Parks, domestic driveways, areas with occasional vehicular access
C250	25	Carriageways if <500 from kerb face, car parks, service stations. Must be non-rocking/silent type
D400	40	Carriageways and hard shoulders. Must be non-rocking/silent type
E600	60	Loading areas, docks, commercial/industrial areas
F900	90	Exceptionally heavy loads, ports, airports

Cover classifications above to BS EN124

**beam consulting**  
 Beam Consulting  
 14 Bond Street  
 Wakefield  
 WF1 2QP  
 Tel: 01924 361653  
 Fax: 01924 364631

PROJECT  
**Tesco Featherstall Road, Chadderton**

DRAWING TITLE  
**Drainage Details**

CLIENT  
**Tesco Stores Ltd**

STATUS  
**Information**

DRAWN	GW	DATE	31/08/2023
CHECKED	MB	SCALE	
APPROVED	KGP	AS SHOWN @ A1	
DRAWING NUMBER	171-53-501		REVISION