

Floor Plan with Dimensions Stated, 110 Portugal Street, Glasgow.

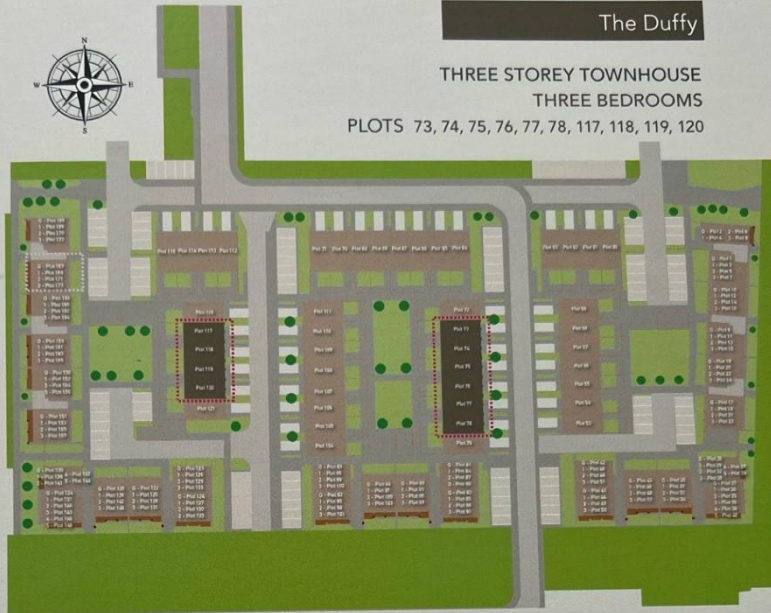
www.urbanunionltd.co.uk

Ground Floor
 Lounge/dining
 4.65m x 4.45m
 15.3ft x 14.6ft
 Kitchen
 3.56m x 2.41m
 11.7ft x 7.9ft

First Floor
 Bedroom one
 4.0m x 3.45m
 13.1ft x 11.3ft
 Bedroom two
 3.0m x 2.41m
 9.8ft x 7.9ft

Second Floor
 Master suite
 3.98m x 3.75m
 13.0ft x 12.3ft

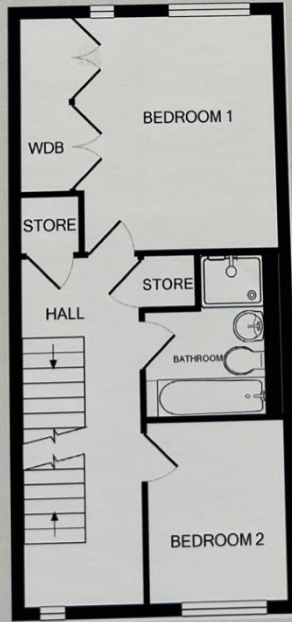
116.8 SQ M / 1257ft²



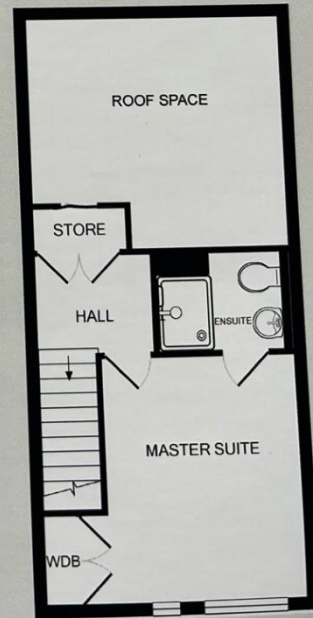
The Duffy
 THREE STOREY TOWNHOUSE
 THREE BEDROOMS
 PLOTS 73, 74, 75, 76, 77, 78, 117, 118, 119, 120



GROUND FLOOR



FIRST FLOOR



SECOND FLOOR