

833®

INSPIRED SOLAR TECHNOLOGY



DAZZLING APPEARANCE

FULL BLACK FOR
AESTHETIC BUILDING
INTEGRATION

HIGH POWER

Electrical Characteristics at Standard Test Conditions(STC)

Module Type: SHINGLED	435	430	425	420
Maximum Power-Pm [W]	435	430	425	420
Open Circuit Voltage-Voc [V]	43.6	43.5	43.4	43.3
Short Circuit Current-Isc [A]	12.79	12.68	12.56	12.46
Maximum Power Voltage-Vm [V]	36.2	36.1	36.0	35.9
Maximum Power Current-Im [A]	12.02	11.92	11.81	11.71
Module Efficiency-n [%]	20.9	20.7	20.4	20.2

430W

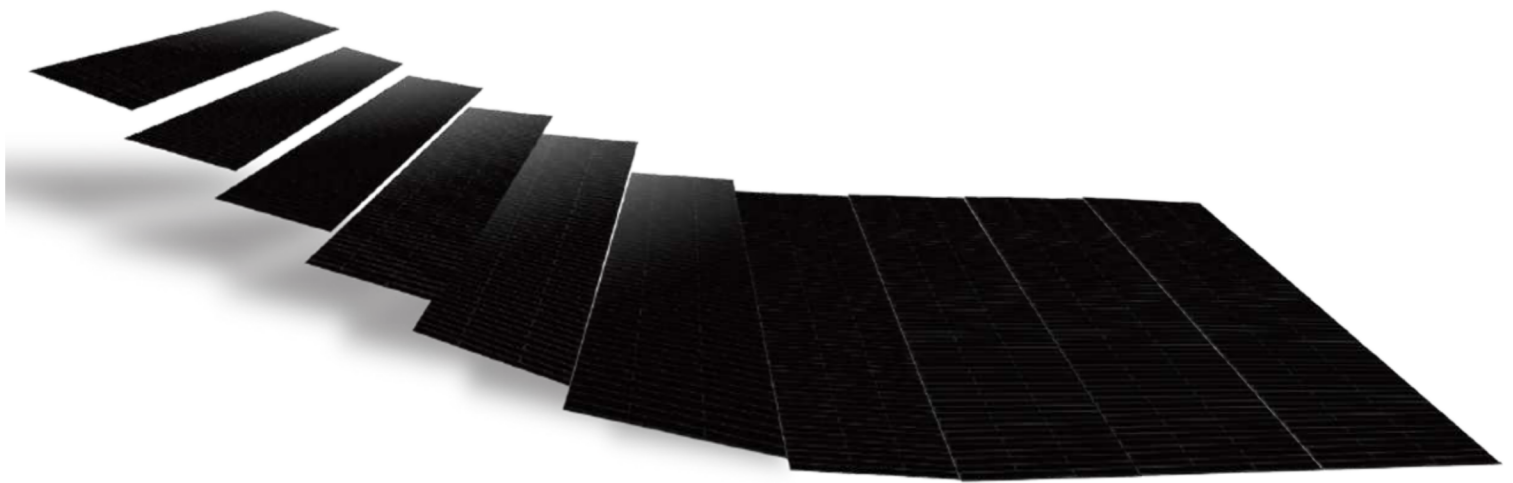
1899*1096*30mm

Industry leading high power
module for residential applications



INTRINSIC SAFETY

SEGMENTED CELLS,
LOW CURRENT,
EXCELLENT HOTSPOT RESISTANCE.



FLEXIBLE INTERCONNECTION

Handle wind and snow load with ease



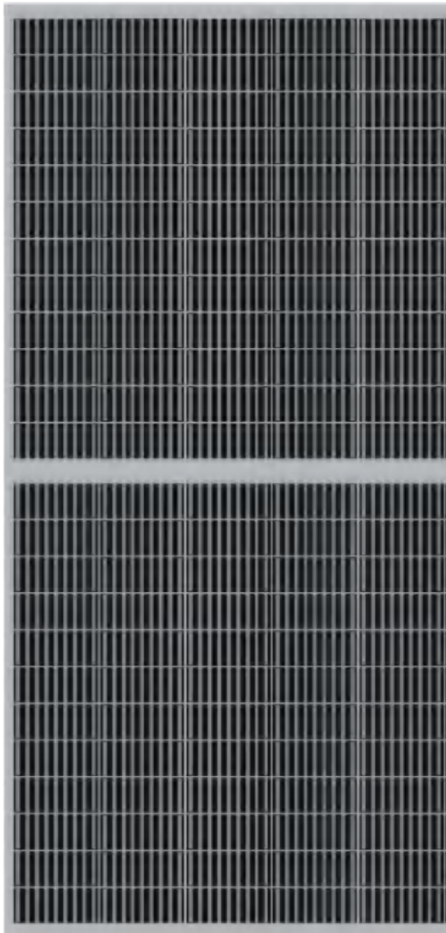
UPWARD LOAD



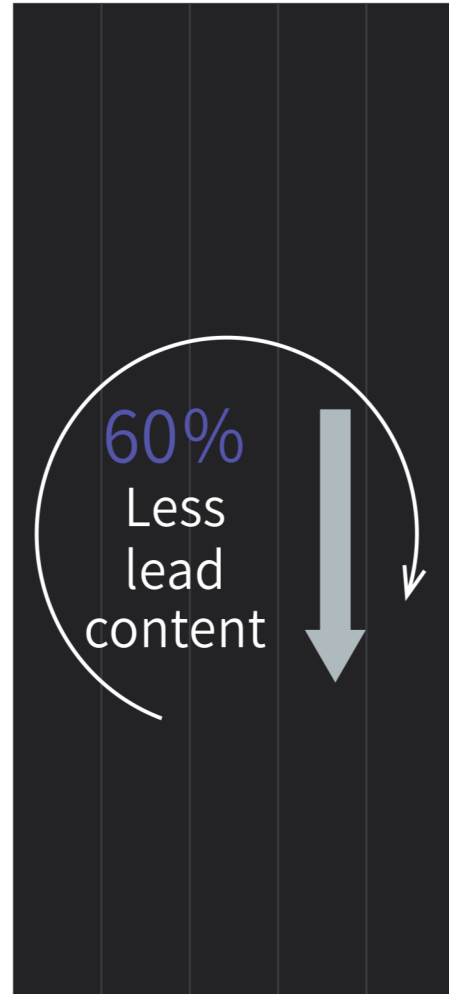
DOWNWARD LOAD



LOAD REMOVED



Half-cut module



Shingled technology

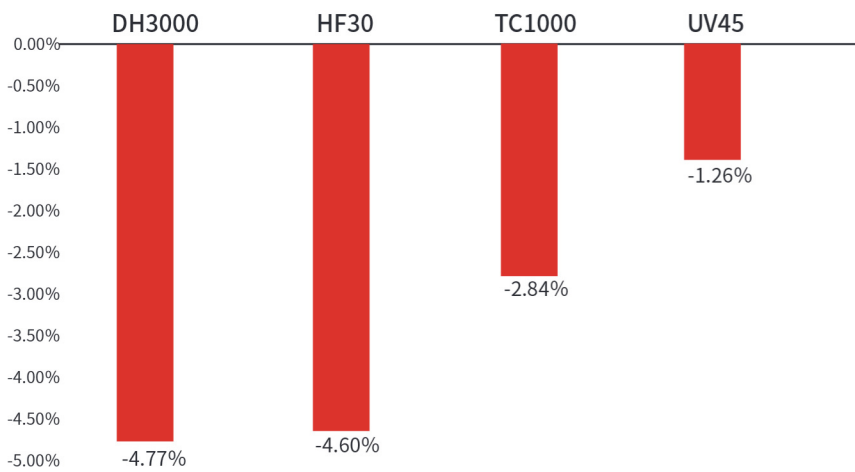
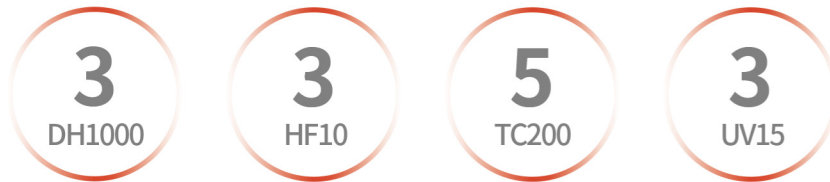
ECO-FRIENDLY

Reduce environmental impact and simplify recycling process



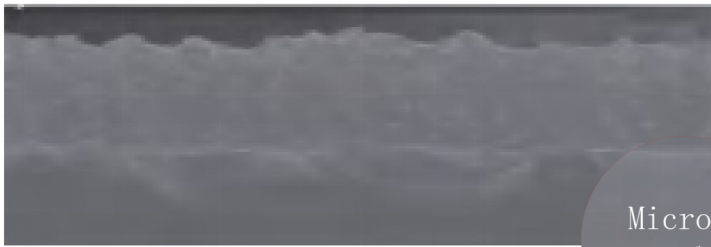
EXCEPTIONAL RELIABILITY

Multifold IEC Test Standards



LOSSLESS LASER CUTTING

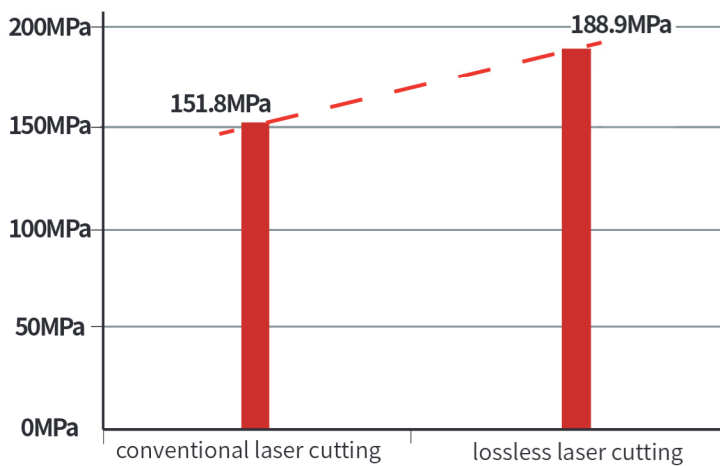
Avoid damage, high strength



Micro cracks



Smooth surface



mechanical strength : conventional laser cutting vs.lossless laser cutting