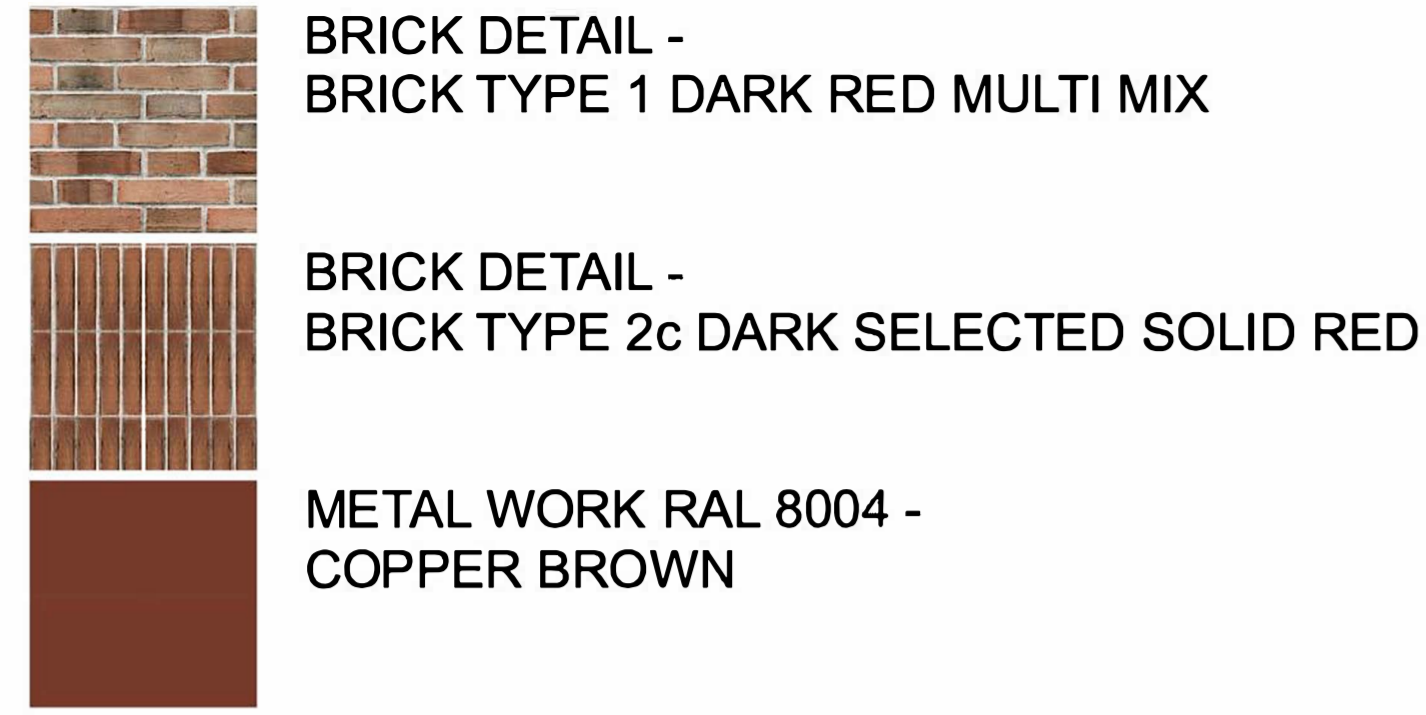


# BLOCK C



## Material Schedule

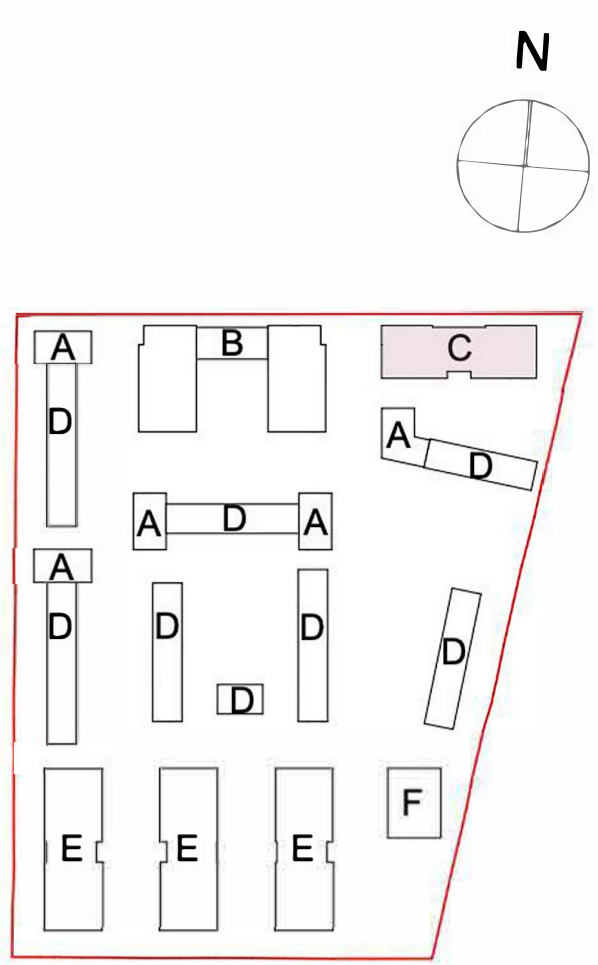
**Roof/ Parapet:**  
 01a Metal coping in RAL 8004 colour  
 01b Stone / Concrete Coping  
 01c Parapet detail- alternating recessed / flush double soldier course  
 01d red concrete plain roof tiles

**Brickwork:**  
 02a Stretcher Bond Brick Type 1 Dark Red Multi Mix  
 02b Stretcher Bond Brick Type 2 Light Red Multi Mix  
 02c Brick Type 3 Solid red mix Brick

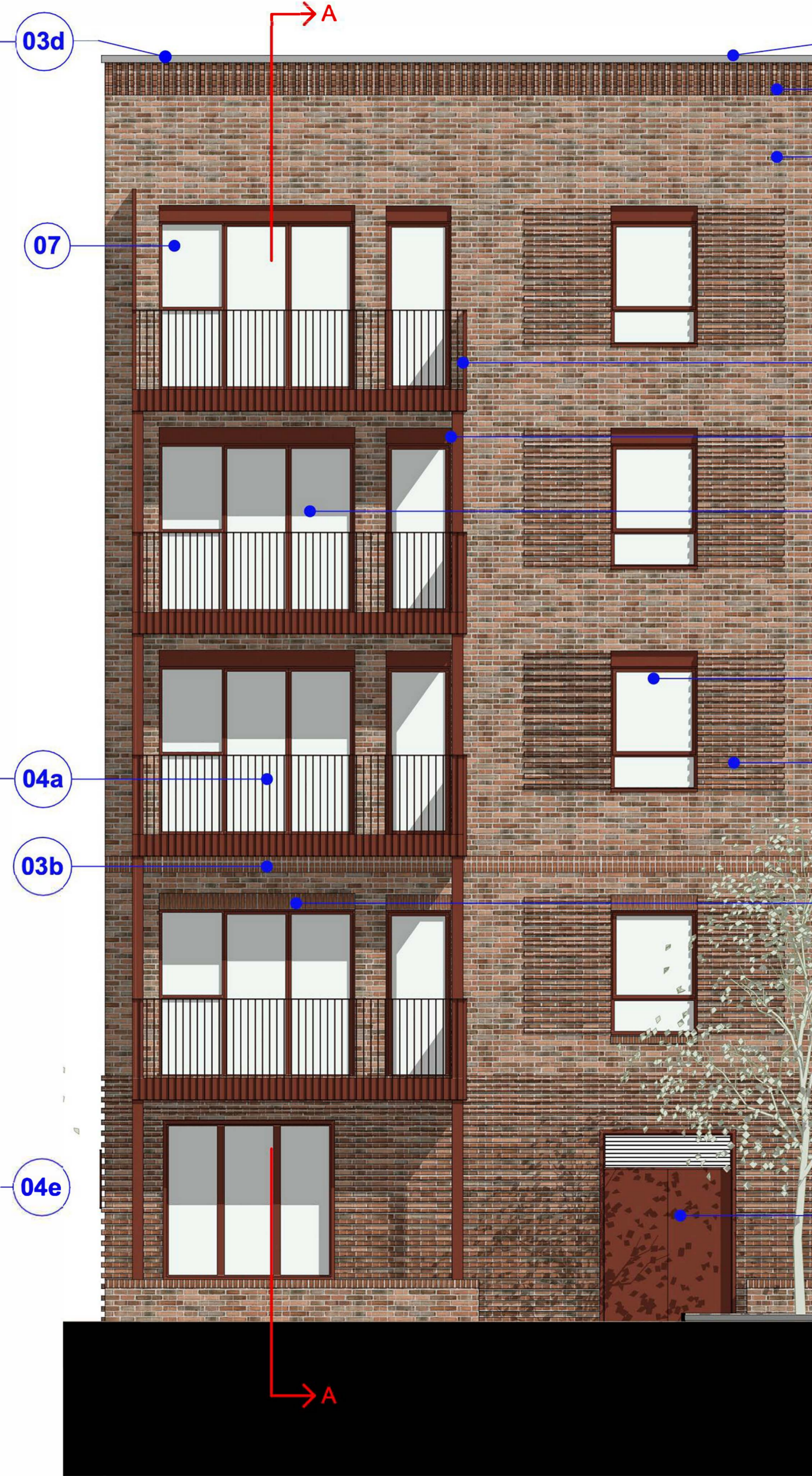
**Brickwork Detail:**  
 03a Projecting header detail in brick type 2c  
 03b Brick soldier course in brick type 02c  
 03c Rusticated Brickwork/Projecting stretcher bond  
 03d Brickwork wall with brick on edge coping in brick type 02c  
 03e Recessed brick panel  
 03f Brick on edge window sill  
 03g Stacked brickwork detail in brick type 02c solid red mix

**Windows/Doors/Balustrade:**  
 04a Metal railings to match windows colour (RAL 8004)  
 04b Powder coated aluminium door / window system with metal panel detail to window head (RAL 8004)  
 04c Powder coated aluminium window system with metal panel detail to window head (RAL 8004)  
 04d Aluminium service doors with louvered vent panel colour (RAL 8004)  
 04e Aluminium Entrance door system with side glazed panel, to match windows colour (RAL 8004)  
 04f Aluminium/glazed entrance door system with frames to match windows colour (RAL 8004)

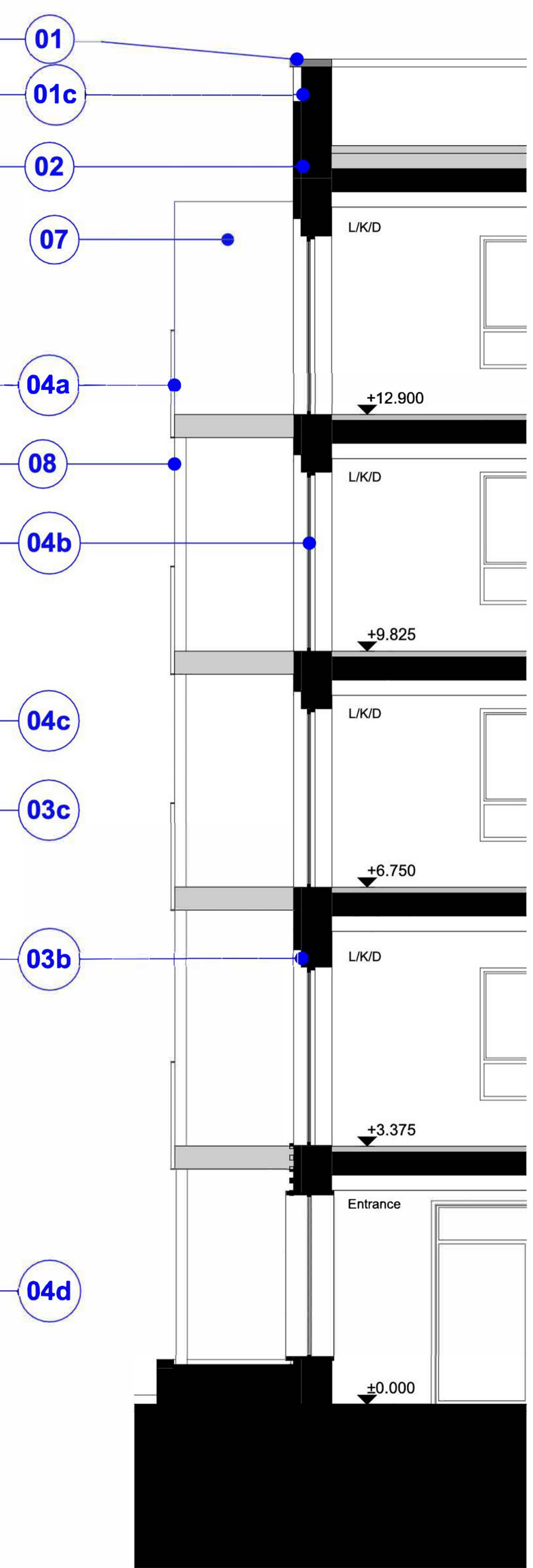
**Others:**  
 05 Metal entrance canopy colour to match windows (RAL 8004)  
 06 Metal signage for Block entrance to match windows colour (RAL 8004)  
 07 Solid Aluminium privacy screens to balconies to match windows colour (RAL 8004)  
 08 Metal balcony frame system (RAL 8004)



Block C South Elevation 1:50



Block C West Elevation 1:50



Block C Detail Section AA 1:50



Any errors and omissions to be reported to the Architect prior to commencement. Dimensions and areas are based on survey information provided by the client. This drawing is copyright © STOCKWOOL. All dimensions to be checked on site. Do not scale.

rev	date	description
P1	30/08/2023	Planning Issue
00	04/08/2023	

**stockwool**

6 Orsman Road London N1 5QJ  
 020 7264 8600 info@stockwool.co.uk

Client  
**Bellway Homes**

Project  
**BELVEDERE**

Drawing  
**Block C Detailed Elevations and Sections**

Design Stage **PLANNING**  
 Purpose  
**Planning Application**

Scale 1:50@A1  
 CAD File 3499\_MainMode  
 Date created 07.07.2023  
 Drawn AP, EG, PO  
 Checked JS

Layout status **P**

Project no\_Drawing no\_Revision

3499-STO-ZZ-EX-PL-A-20452

P1