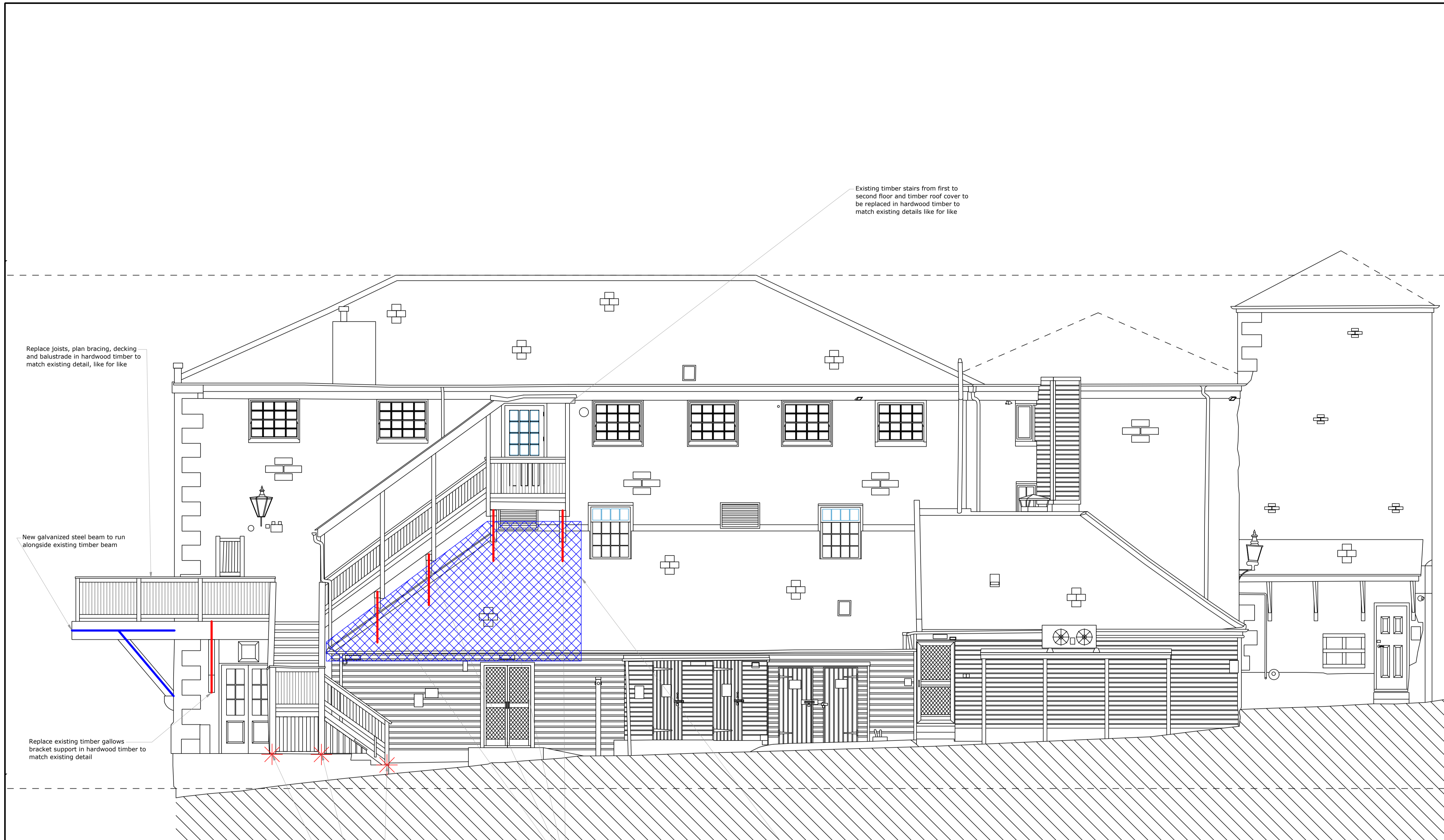


- GENERAL**
- Do not scale this drawing. Use figured dimensions only. Any dimensions taken from CAD files are to be verified against figured dimensions or by BGC.
 - This drawing must be read in conjunction with all relevant Architects, Engineers, Specialist Manufacturers and Contractors drawings and Specifications. Any differences arising between these documents and/or variations between drawings and site conditions are to be referred to the Architect and Engineers.
 - All work is to be carried out in accordance with Health & Safety Regulations and to the full approval of the Planning Supervisor.
 - The Contractor must check and verify all dimensions before commencing work and report any discrepancies to the Architect and Engineers.
 - The positions of services, plant or apparatus where shown on this drawing are indicative and reference should be made to the Specialist Consultants drawings for actual details.
 - The Contractor to take all necessary precautions to establish the location of buried services and obstructions prior to commencing excavations. All proprietary materials are to be installed in accordance with the manufacturers specification and recommendations.



EAST ELEVATION

★ Indicates location of steel shoes

Notes

Allow for new steelwork to be galvanized and painted to match existing timber.

Allow for through bolt fixing into internal face of external wall with steel back plate for timber gallows bracket fixing.

Further construction details will be provided as part of detailed design stage once proposals have been approved.

Rev.	Revision Description.	Date	Initial	DRA

DRA - Denotes whether revision(s) affect the Designers Risk Assessment.
 "Yes" in this column will be accompanied by a note added to the drawing describing the new or increased/decreased risk.
 "No" in this column denotes no change to the DRA.

bg consulting *Baxter Glaysher Consulting Civil and Structural Engineers*
 33-35 Bell Street
 Reigate
 Surrey
 RH2 7AW
 Tel.: 01737 240241
 Fax: 01737 240341
 Email: cadoffice@bg-consulting.co.uk

Client
 Fuller, Smith & Turner

Project
 The Head of The River

Drawing Title
 External Timber Structures Works
 East Elevation

Drawn	Checked	Approved	Contract / Drawing No.	Rev.
A1	SZ	LD		
Date	Scale			
11/10/2023	A1	150	D04	-

Baxter Glaysher Consulting Ltd
 © Copyright; This drawing is the property of Baxter Glaysher Consulting Ltd. Copyright is reserved by them and the drawing is issued on the condition that it is not copied either wholly, or in part, without the consent in writing of Baxter Glaysher Consulting Ltd.



BGC_A1-A0.ctb

