



FL2X2-SDP-A-06-10 - New Pole
 S/O 6 LISMOYNE CLOSE, FLEET, GU51 4NF
Pole_Type:9M WOOD
Surface Type:Tarmac
 Coordinates:
 X=480704.86
 Y=154590.20
 Footpath width:1.6m
 Verge width: m

Any modifications to the drawing or use of alternative items to those specified must be agreed with Toob's local planning department

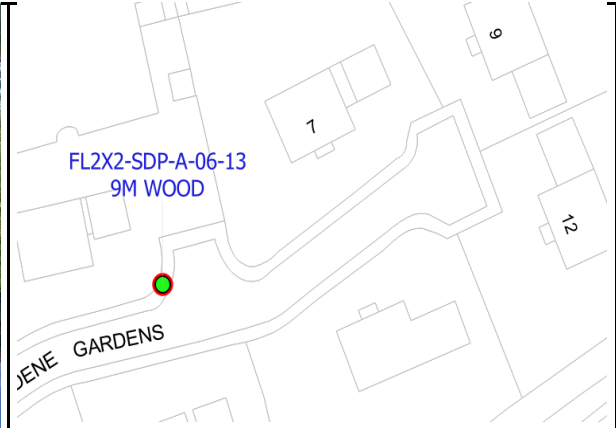
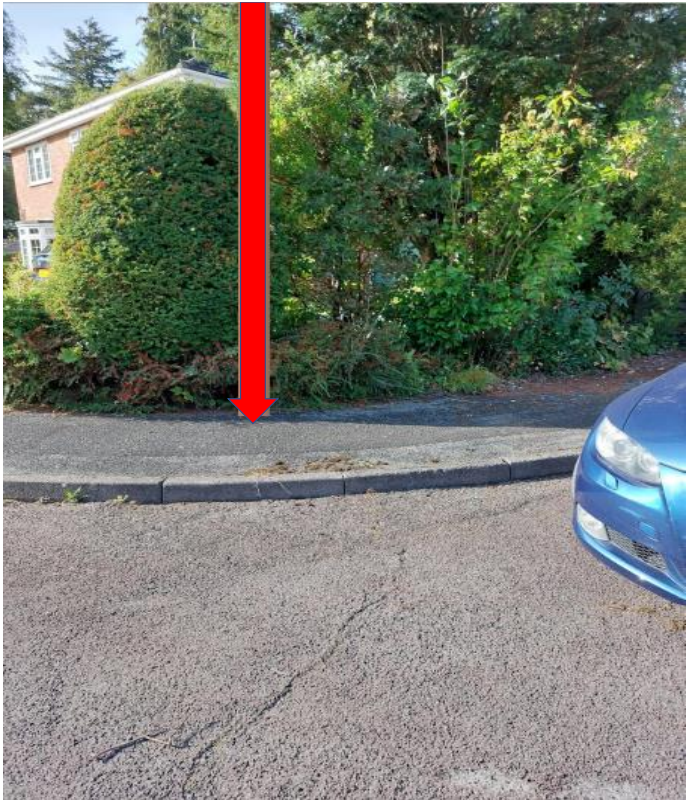
Reproduction from the Ordnance Survey map by Toob with permission of Ordnance Survey on behalf of Her Majesty's Stationary Office © Crown Copyright Toob

FL2X2-SDP-A-06-10

| | |
|----------------|-----------------|
| Originator | Cyient |
| Contact Number | 0752598439 |
| Issue Date | August 14, 2023 |
| Office | Southampton |
| Line Manager | Di Godsave |



Internal Use Only



FL2X2-SDP-A-06-13 - New Pole
 S/O 5 ROSEDENE GARDENS, FLEET, GU51 4NQ
Pole_Type:9M WOOD
Surface Type:Tarmac
 Coordinates:
 X=480714.1
 Y=154722.2
 Footpath width:1.6m
 Verge width: m

Any modifications to the drawing or use of alternative items to those specified must be agreed with Toob's local planning department

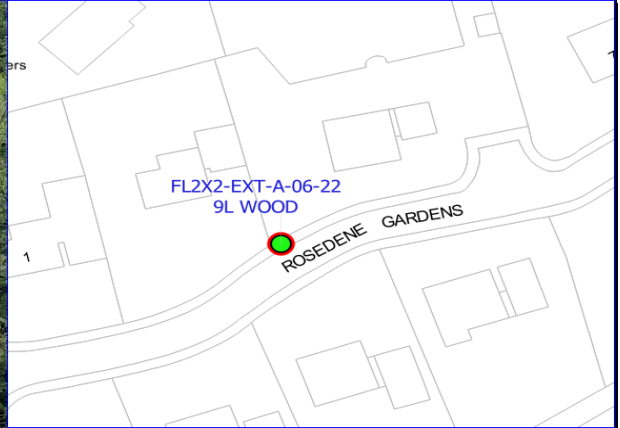
Reproduction from the Ordnance Survey map by Toob with permission of Ordnance Survey on behalf of Her Majesty's Stationary Office © Crown Copyright Toob

FL2X2-SDP-A-06-13

| | |
|----------------|-----------------|
| Originator | Cyient |
| Contact Number | 0752598439 |
| Issue Date | August 14, 2023 |
| Office | Southampton |
| Line Manager | Di Godsave |



Internal Use Only



FL2X2-EXT-A-06-22 - New Pole
 S/O 3 ROSEDENE GARDENS, FLEET, GU51 4NQ
Pole_Type:9L WOOD
Surface Type:Tarmac
 Coordinates:
 X=480685.57
 Y=154709.57
 Footpath width:1.7m
 Verge width: m

Any modifications to the drawing or use of alternative items to those specified must be agreed with Toob's local planning department

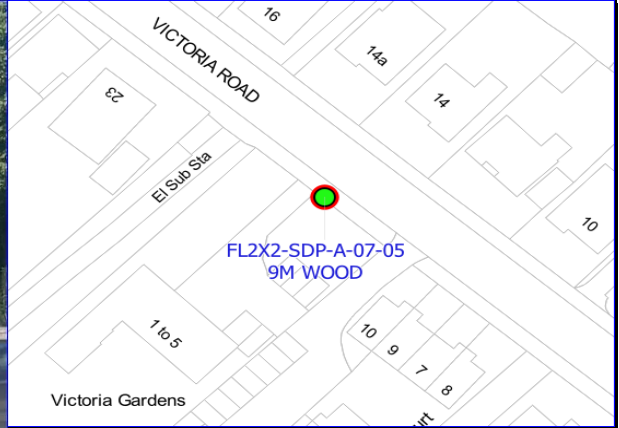
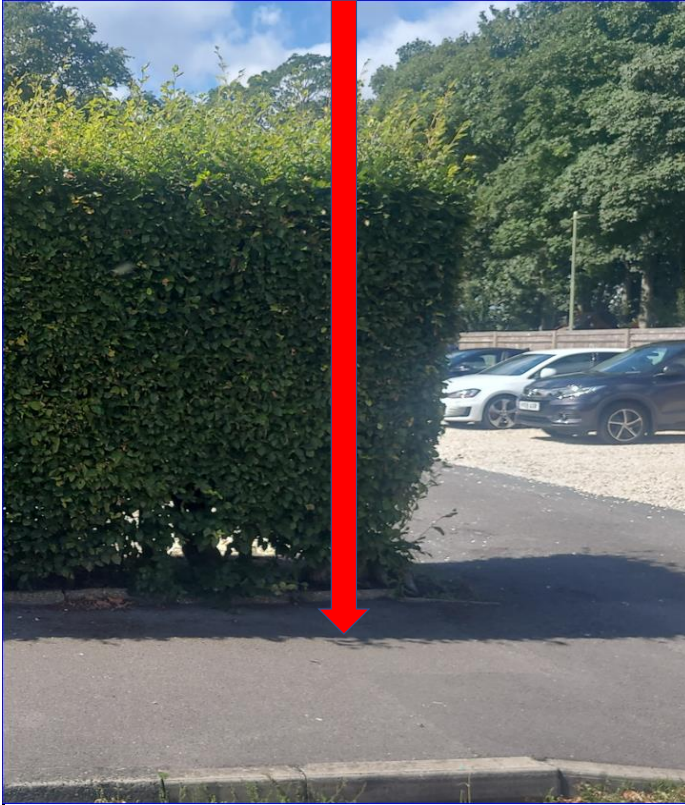
Reproduction from the Ordnance Survey map by Toob with permission of Ordnance Survey on behalf of Her Majesty's Stationary Office © Crown Copyright Toob

FL2X2-EXT-A-06-22

| | |
|----------------|-----------------|
| Originator | Cyient |
| Contact Number | 0752598439 |
| Issue Date | August 14, 2023 |
| Office | Southampton |
| Line Manager | Di Godsave |



Internal Use Only



FL2X2-SDP-A-07-05 - New Pole
 OPP 14 VICTORIA ROAD, FLEET, GU51 4DN
Pole_Type:9M WOOD
Surface Type:Tarmac
 Coordinates:
 X=480658.20
 Y=154186.22
 Footpath width:2.5m
 Verge width: m

Any modifications to the drawing or use of alternative items to those specified must be agreed with Toob's local planning department

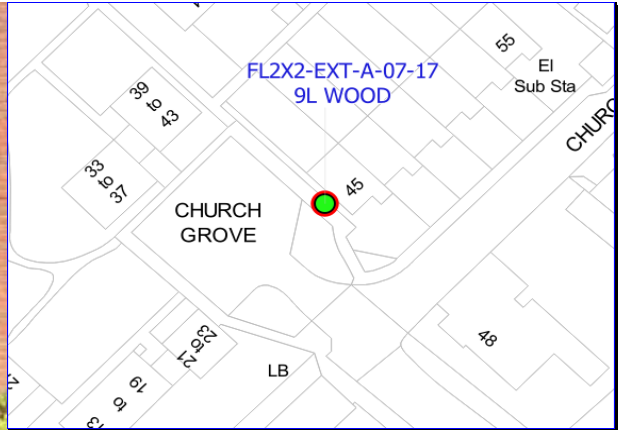
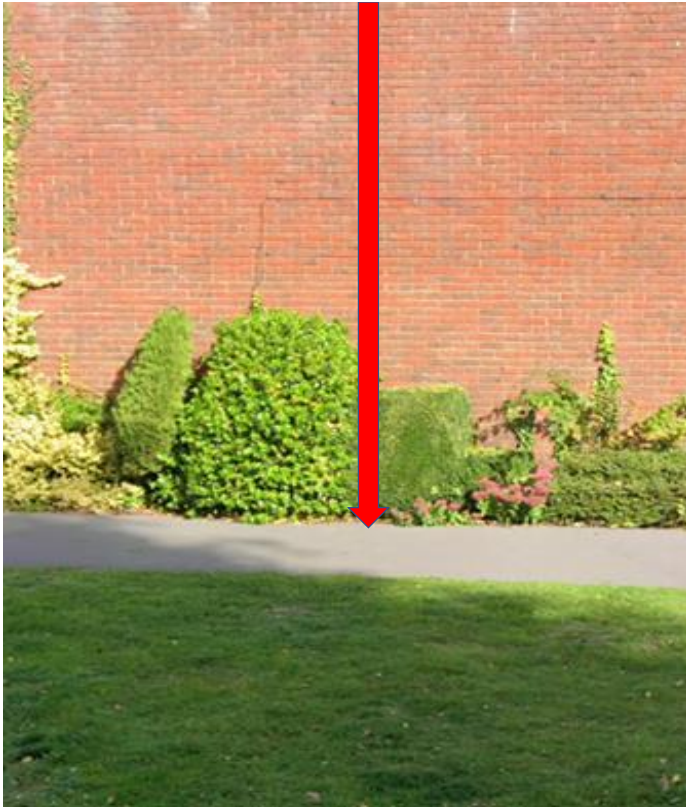
Reproduction from the Ordnance Survey map by Toob with permission of Ordnance Survey on behalf of Her Majesty's Stationary Office © Crown Copyright Toob

FL2X2-SDP-A-07-05

| | |
|----------------|-----------------|
| Originator | Cyient |
| Contact Number | 0752598439 |
| Issue Date | August 14, 2023 |
| Office | Southampton |
| Line Manager | Di Godsave |



Internal Use Only



FL2X2-EXT-A-07-17 - New Pole
 S/O 45 CHURCH GROVE, FLEET, GU51 4JZ
Pole_Type:9L WOOD
Surface Type:Tarmac
 Coordinates:
 X=480380.25
 Y=154453.07
 Footpath width:1.8m
 Verge width: m

Any modifications to the drawing or use of alternative items to those specified must be agreed with Toob's local planning department

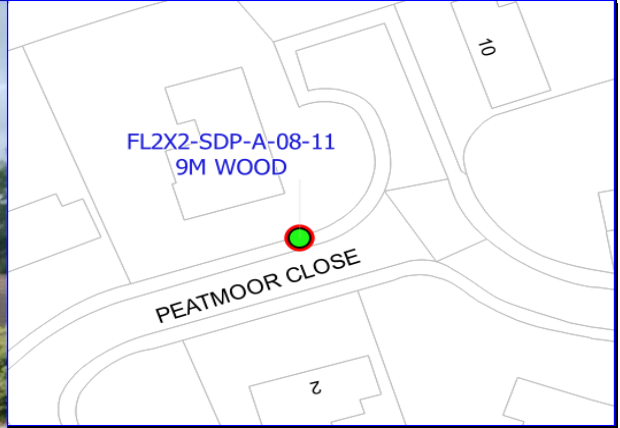
FL2X2-EXT-A-07-17

| | |
|----------------|-----------------|
| Originator | Cyient |
| Contact Number | 0752598439 |
| Issue Date | August 14, 2023 |
| Office | Southampton |
| Line Manager | Di Godsavage |



Internal Use Only

Reproduction from the Ordnance Survey map by Toob with permission of Ordnance Survey on behalf of Her Majesty's Stationary Office © Crown Copyright Toob



FL2X2-SDP-A-08-11 - New Pole
 O/S 8 PEATMOOR CLOSE, FLEET, GU51 4LE
Pole_Type:9M WOOD
Surface Type:Tarmac
 Coordinates:
 X=480463.96
 Y=154668.15
 Footpath width:1.7m
 Verge width: m

Any modifications to the drawing or use of alternative items to those specified must be agreed with Toob's local planning department

Reproduction from the Ordnance Survey map by Toob with permission of Ordnance Survey on behalf of Her Majesty's Stationary Office © Crown Copyright Toob

FL2X2-SDP-A-08-11

| | |
|----------------|-----------------|
| Originator | Cyient |
| Contact Number | 0752598439 |
| Issue Date | August 14, 2023 |
| Office | Southampton |
| Line Manager | Di Godsave |



Internal Use Only