

CONSTRUCTION SURFACE WATER MANAGEMENT PLAN

Site Name: Haven Allhallows, Kent

Contractor Name: Medlock FRB Ltd

Reference Number: MEDCSWMPHAK01

Planning Application No:

Index

- 1. Introduction & Aim
- 2. Site Details
- 3. Roles & Responsibilities
- 4. Managing Surface Water During Construction
- 5. Flood & Weather Alert
- 6. Legislation & Guidance
- 7. Company, Contractor Accreditation (e.g. ISO) and Environmental Policies
- 8. Appendices List

Content Amendment Record

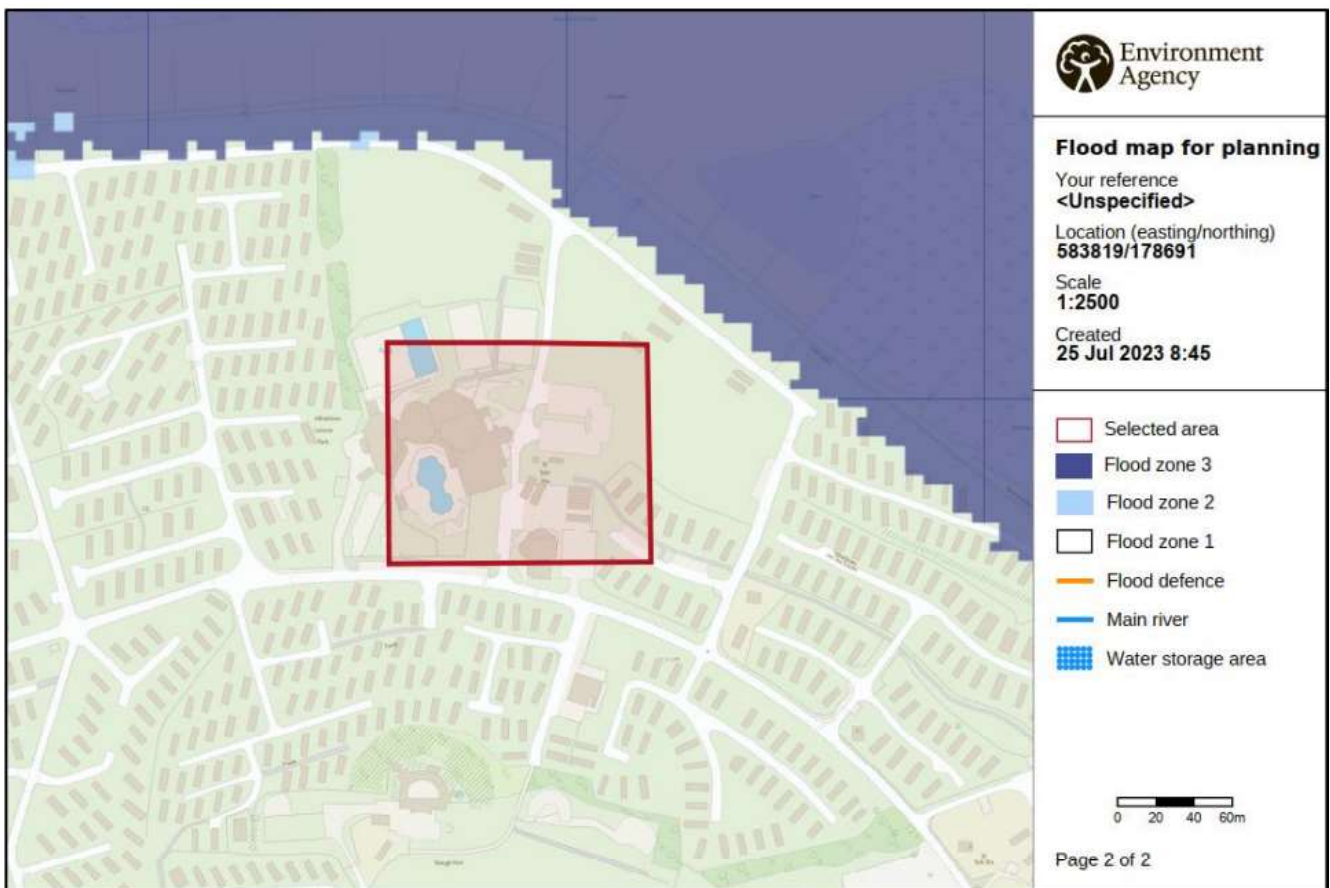
Issue No	Revision	Description	Date	Signature
1	-	Initial submission	29.09.23	C. Brolan

1. Introduction & Aim

1.1 The requirement for a Construction Surface Water Management Plan (CSWMP) is based on the duty to ensure that surface water quality and quantity is managed throughout the construction process to mitigate impacts off site.

2. Site Details

2.1 Location: Haven Kent Coast Holiday Park, Allhallows, Rochester ME3 9QD



3. Roles & Responsibilities

3.1 This section identifies the key roles and responsibilities for the scheme.
This is to be completed by the appointed contractor.

Role	Contact	Company Name & Address	Contact No & Email	Key Responsibilities
Project Director	Jimmy Harrison	Medlock	07871 366 979	Manage Personnel
Contracts Manager	John Townsend	Medlock	07857 944 981	Manage Site
Site Manager	Ray Cossins	Medlock	07970 823 077	Manage Site
H&S Manager	Nigel Whiteoak	Medlock	07857 944 981	Manage H&S
Planning Manager	Carl Brolan	Medlock	07500 060 512	Plan Works

4. Managing Surface Water During Construction

Tick one option box from the type of surface water system you intend to use and supply details as an appendix.

Option 1.

Build, use and remediate permanent surface water drainage system

Option 2.

Install, use and remove a temporary surface water drainage system

Option 3.

Utilise existing system with pollution control measures (Brownfield sites only)

Details to include:

- Construction Surface Water Drainage System Design
- Construction Management, Maintenance and Remediation Schedules
- Required Consents (e.g. Land Drainage Act, Environmental Permit etc)
- Flood Risk Controls
- Pollution, Water Quality & Emergency Control Measures
- Phasing Plan (if required)
- Construction Site Plan showing compounds, material storage areas, temporary site parking etc

5. Flood & Weather Alert

5.1 Flood Alert (River and Sea Flood Risk)

Project Manager and Works Manager should sign up to the Environmental Agency flood warning system <https://www.gov.uk/sign-up-for-flood-warnings> if the site is within a flood zone 2 or 3.

Alert Level	Definition	Action	Responsibility
Flooding Alert	Flooding is possible – be prepared	Weather forecast to be closely monitored Plan for evacuation of levels change	Site Manager
Flood Warnings	Flooding is expected – immediate action required	Plan to remove all personnel, equipment and materials from site immediately	Contracts Manager / Health & Safety Manager
Severe Flood Warning	Severe flooding danger to life	Vacate site until threat level reduced	Project Director / Health & Safety Manager



5.2 Weather Alerts (Surface Water Flood Risk)

Project Manager and Works Manager should sign up to the Met Office weather warning system <https://www.metoffice.gov.uk/public/weather/warnings>

Alert Level	Definition	Action	Responsibility
Yellow: Be Aware	Yellow warnings can be issued for a range of weather situations. Many are issued when it is likely that the weather will cause some low-level impacts, including some disruption to travel in a few places. Other yellow warnings are issued when the weather could bring much more severe impacts to many people but the certainty of those impacts occurring is much lower. It is important to read the content of yellow warnings to determine which weather situation is being covered by the yellow warning.	Sign up to Met Office weather alerts Check forecasts daily	Site Manager & Contracts Manager
Amber: Be Prepared	There is an increased likelihood of impacts from severe weather, which could potentially disrupt your works plans. This means there is the possibility of travel delays, road and rail closures, power cuts and the potential risk to life and property.	All site personnel to be briefed on the severe weather forecasts. Labour may be stood down until risk is reduced.	Contracts Manager, Site Manager & H&S Manager
Red: Take Action	Dangerous weather is expected and, if you haven't already done so, you should take action now to keep yourself and your works force safe from the impact of the severe weather. It is very likely that there will be a risk to life, with substantial disruption to travel, energy supplies and possibly widespread. You should avoid travelling, where possible, and follow the advice of the emergency services and local authorities.	Site is to to be evacuated until further notice. Seek advice from emergency services.	Project Director, Health & Safety Manager, Contracts Manager.

6. Legislation & Guidance

The Water Environment (England and Wales) regulation 2009
Land Drainage Act 1991
SEPA Engineering in the Water Environment Good Practice Guide Temporary Construction Methods

Methods
Control of Water Pollution from Construction Sites – Guide to Good Practice (SP156)
Control of Water Pollution from Construction Sites – Guidance for Consultants and Contractors (C532)
Control of Water Pollution from Linear Construction Projects – Technical Guidance (C648)
Control of Water Pollution from Linear Construction Projects – Site Guide (C649)
Environmental Good Practice – Site Guide (C650)
The SUDS Manual (C753)
BS 8582:2013 Code of practice for surface water management for development sites
BS 8582:2013 Code of practice for surface water management for development sites

7. Company, Contractor Accreditation (e.g.ISO) and Environmental Policies

ISO 9001
ISO 14001
ISO45001
CHAS Elite accreditation

8. Appendices List

5720-FRADS-PO2 Flood Risk Assessment

Environmental Risk Assessment

Guidance noted in section 6

PPG 22 Incident Response and dealing with spills

Note - Although PPG 22 is provided for guidance and general information on emergency response, it should be noted that this document has been superseded and for full detail regarding legal responsibilities on pollution prevention, reference should be made to Gov.uk website.