

CLIENT Robert Deacon (Builders) Ltd
SITE Land to the Rear of Battledown Court
PROJECT New Dwelling

DRAWING TITLE Replacement trees
DRAWING NUMBER 1346.04B

SCALES / PAPER SIZE 1 : 100 or as noted @ A3
DATE feb 2023
REVISION **DATE** **DESCRIPTION**
A 16/3/23 RT 2 & 3 alternative plant.
B 25/10//23 HT footprint revised

NURSERY STOCK: as specified in the National Plant Specification (NPS) ! published by the Horticultural Trades Association.

PREPARATION FOR PLANTING:
 Apply approved weedkiller.
 Rotovate ground and remove stones over 50mm in any dimension.
 Remove existing unwanted plants including their roots.

SOIL CONDITIONING: apply and lightly dig into the surface one of the following:
 well rotted farmyard manure at a rate of 5kg/m2.
 concentrated bagged animal manure to manufacturers specified rate rate ! • well rotted leaf-mould or spent mushroom compost at a rate of 5kg/m2.
FERTILISER: incorporate bonemeal at the rate of 70gm/m2 into the topsoil.
MYCORRIZAL FUNGI: apply dry granolas to planting pit or trench at a rate of 45g per 6/8 tree, or 20g per linear meter accordingly, using 'Rootgrow' professional

PLANT HANDLING, DELIVERY AND STORAGE: to be as recommended in the National Plant Specification.
 Phase the delivery of plants so that there is only sufficient for planting within 48hrs. of delivery or, if necessary, ensure suitable temporary storage before final planting by heeling in or lining out.

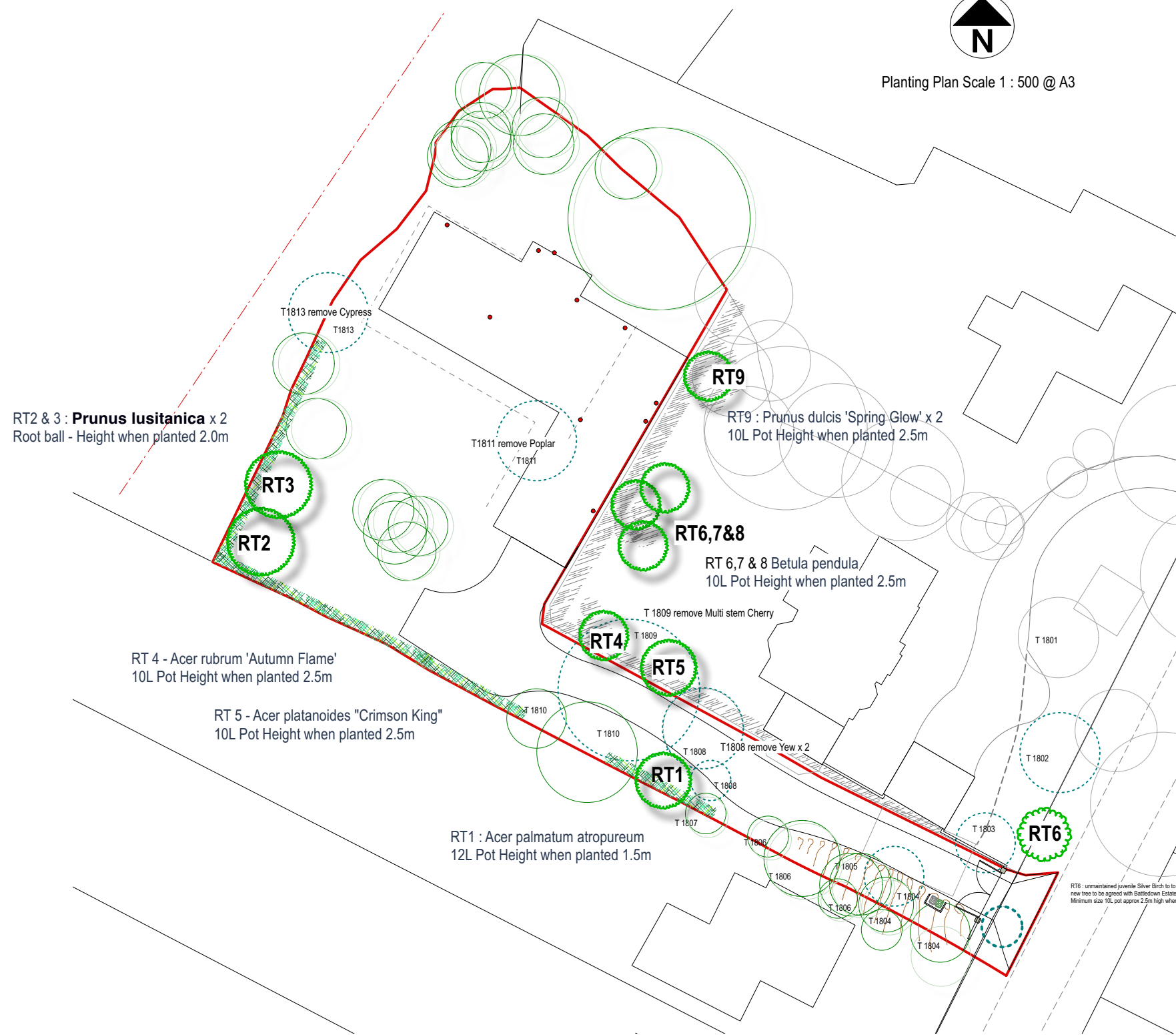
PREPARATION OF PLANTS:
 Remove inorganic containers.
 Check for and reject any damaged, diseased, poorly rooted, pest infested or wrongly identified plants.
 Carefully prune any minor root damage.

PLANT
 in position shown on the drawings or in the absence of drawings space evenly;
 plant avoiding regimented rows unless specifically shown;
 in holes large enough to allow adequate root spread and tease out congested root balls of container grown plants;
 excavate holes at least 75mm below the root system and a min. 400mm for climbers;
 set plants so that their original soil level matches the new surrounding ground and with their best side displayed.

BACKFILLING to be selected existing topsoil. The backfill is to be evenly worked round the roots and well heeled in.

IMMEDIATELY AFTER PLANTING:
 Lightly prune back any damaged or malformed growth. Rake soil to an even, fine tilth to the required levels.

PLANTING SEASON:
 Plant out non-container grown plants only between October and March inclusive unless otherwise agreed.
 Container grown or containerised plants may be planted out at any time of year except when the temperature is below 4oC on a falling thermometer, in frozen or waterlogged ground or in drought conditions.



Trees TREE QUALITY, SIZE AND TYPE: to the National Plant Specification with size as noted on drawing or schedule. **TREE STAKES:** 75mm minimum diameter, free of bark, with one end pointed. **STAKING FOR TREES UP TO 'STANDARD' SIZE.** Drive stake upright 450mm into bottom of excavated planting pit close to the tree stem on the windward side. Cut off at one-third the height of the tree and secure tree with approved ties and spacers at the top of the stake. **ANCHORING FOR LARGER TREES, (1) & (2).** Use of 'Platipus', or similar, rootball anchoring system. With cast aluminium anchors and galvanised wires. Install according to manufacturers instructions. **PLANT TREES:** upright and in exact positions shown on the drawings; in square holes large enough to allow adequate root spread; so that their original soil level matches the new surrounding ground; so that the original orientation is maintained. Excavate holes at least 75mm below the root system and loosen soil in base of hole. For root balled or bare root stock, cut back any damaged roots to sound growth. **WATERING AND AERATION PIPES:** provide perforated plastic watering pipes in a circle one third down around the root ball. **BACKFILLING** to be selected existing topsoil where available. Any imported soil/organic matter should be well mixed with at least equal quantities of existing soil. The backfill is to be evenly worked round the roots and well heeled in leaving the top slightly proud of the existing level to allow for settlement. **PRUNING:** Immediately after planting carry out light formative pruning according to species. Remove damaged or weak growth.

WATERING AND PROTECTION: Water thoroughly immediately after planting and at intervals as necessary until Practical Completion or until the end of the defects liability period if later. After the first watering, mulch with 75mm of composted coarse wood or bark chippings over the excavated area.

MAINTENANCE AND REPLACEMENT: Replace any dead or dying trees at the end of the Defects Liability Period with trees similar to those specified. In the following year in March or April apply N15:P15:K15 fertiliser round all trees and keep the ground weed free for 1 metre diameter round each tree.

Drawing to be read in conjunction with

[MDH Forestry Services Ltd](#)

Arboricultural Report BS5837 (2012)
 Including Landscape, Visual Impact & Tree Protection
 Assessment and Method Statement
 Ref: Battledown Court, Ashley Road, GL52 6NS
 Report carried out on 2nd December 2022
 Amendment 6th January 2023