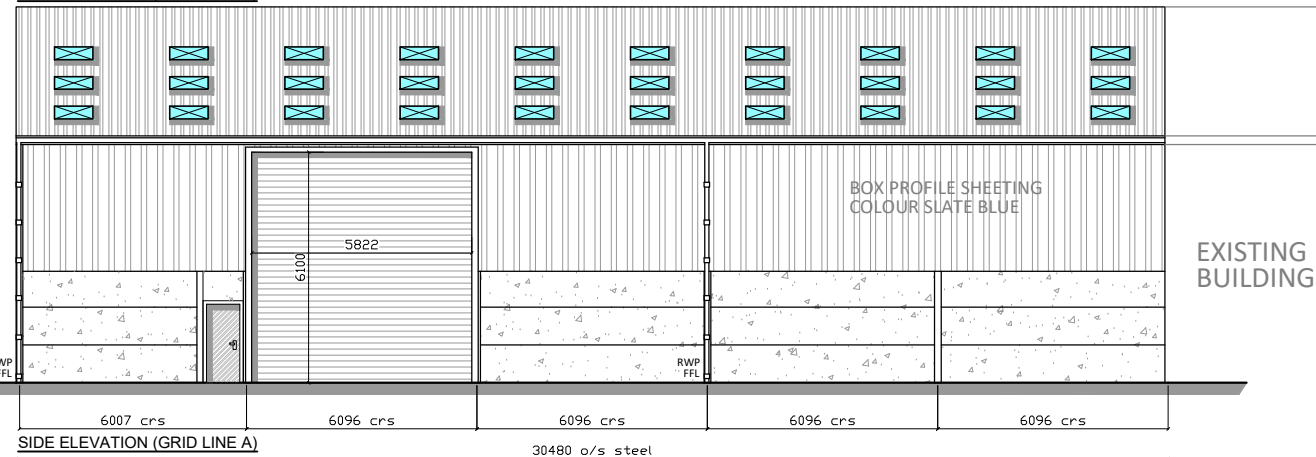
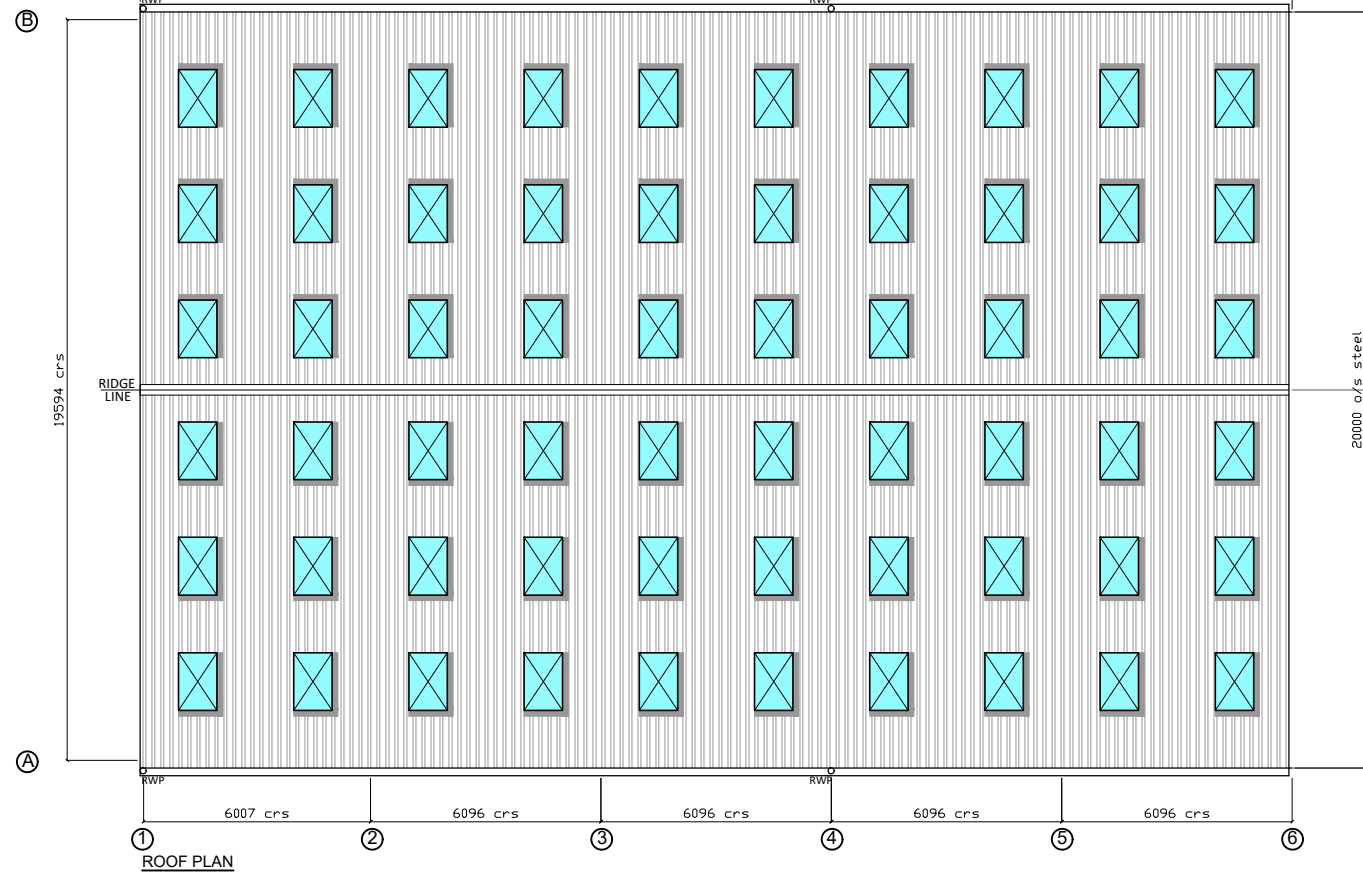


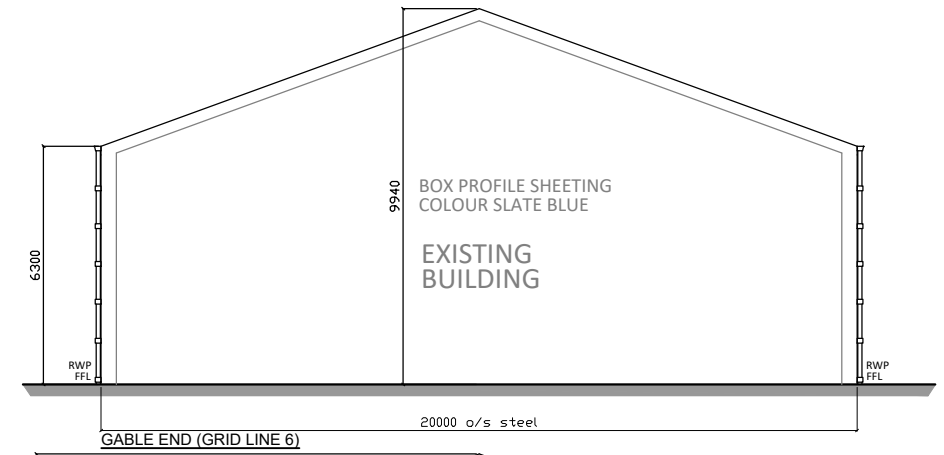
SIDE ELEVATION (GRID LINE B)



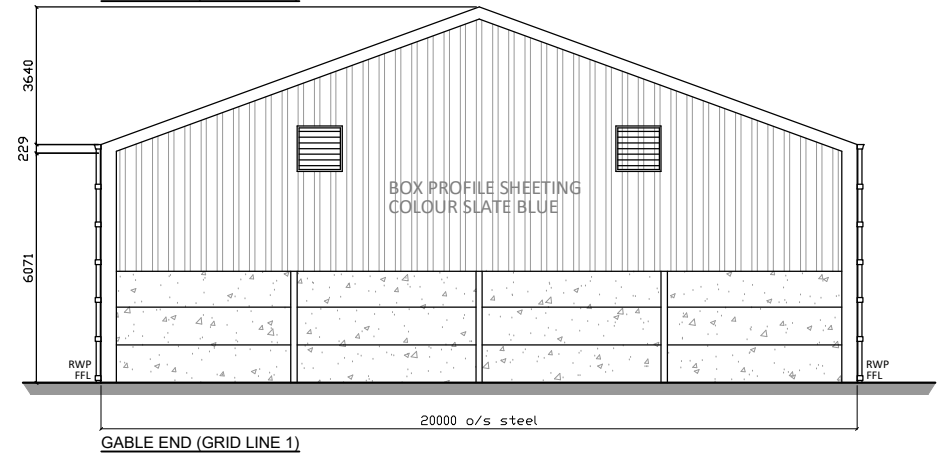
SIDE ELEVATION (GRID LINE A)



ROOF PLAN



GABLE END (GRID LINE 6)



GABLE END (GRID LINE 1)

**SPECIFICATION:**  
**SIZE:**  
 30.480m (100') LONG x 20.000m (65'7") WIDE x 6.300m HIGH TO EAVES WITH A 20° ROOF PITCH  
**STRUCTURE:**  
 STANCHIONS: 406mm x 178mm x 54kg UB STANCHIONS  
 SUB STANCHIONS: 305mm x 165mm x 40kg UB INTERMEDIATE SUB STANCHIONS  
 RAFTERS: 305mm x 165mm x 40kg UB RAFTERS WITH RAFTER STAYS  
 INCLUDING CHS RAFTER AND SIDE BRACING TO BOTH END BAYS COMPLETE WITH CHS EAVES TIES.  
**STEELWORK:**  
 ALL FABRICATED STRUCTURAL STEELWORK DELIVERED TO SITE SHALL INCORPORATE APPROPRIATE "UKCA" MARKING IN ORDER TO CONFORM TO THE REQUIREMENTS OF BS EN 1090-1.  
 ALL STEELWORK TO BE SHOT BLASTED AND PAINTED WITH A RED SEMI OXIDE FINISH.  
**PURLINS:**  
 TO SUPPLY GALVANISED STEEL PURLINS BY STEEL SECTION LTD BOLTED TO FRAME AT 1.375M CENTRES. EAVES BEAM TO BE GALVANISED STEEL.  
**ROOF CLADDING:**  
 TO SUPPLY PROFILE 6 REINFORCED CORRUGATED NATURAL GREY FIBRE CEMENT SHEETS. RIDGE TO BE CLOSED. NEW FIBRE CEMENT VERGES, CRANKED BARGE AND BARGE BOARDS HAVE BEEN ALLOWED FOR.  
**ROOF LIGHTS:**  
 INCORPORATE 60 NO. 1.525M CORRUGATED 2.40KG/M<sup>2</sup> GRP PROFILE 6 ROOF LIGHTS IN ROOF CLADDING POSITIONED TO SUIT CUSTOMER'S REQUIREMENTS.  
**RAINWATER GOODS:**  
 EAVES GUTTER TO BE 160 ON THE SIDE WITH 2 NO. 110mm Ø PVC DOWNPIPES TO EACH SIDE. ALL GUTTERS TO BE PVC WITH RUBBER SEALED JOINTS FIXED TO EAVES BEAMS WITH PVC BRACKETS AT 1M INTERVALS AND PVC DOWN PIPE CLIPS TO STANCHIONS.  
**END CLADDING:**  
 ONE GABLE END TO BE CLAD DOWN TO 3.353M (11') BELOW EAVES LEVEL WITH 0.7MM THICK POLYESTER COATED BOX PROFILE STEEL SHEETS ON GALVANISED STEEL SHEETING RAILS. TO INCLUDE SHEDDER FLASHING AND FOAM FILLERS.  
**SIDE CLADDING:**  
 BOTH SIDES TO BE CLAD DOWN TO 3.353M (11') BELOW EAVES LEVEL WITH 0.7MM THICK POLYESTER COATED BOX PROFILE STEEL SHEETS ON GALVANISED STEEL SHEETING RAILS. TO INCLUDE SHEDDER FLASHING AND FOAM FILLERS.  
**DOORS:**  
 1 NO. ROLLER SHUTTER DOOR TO BE 5.822M WIDE X 6.100M HIGH, THREE PHASE ELECTRICAL OPERATION (ISOLATOR BY OTHERS), PLAIN GALVANISED FINISH, POSITIONED ON ONE SIDE.  
 1 NO. PERSONNEL DOOR IN GOOSEWING GREY, WITH EXTERNAL MULTI POINT LOCKING SYSTEM.  
**CONCRETE PANELS:**  
 140mm THICK x 3.000m HIGH CONCRETE PANELS TO ONE END AND BOTH SIDES.  
**LOUVERS:**  
 TO SUPPLY AND FIT 2 NO. 1.200M X 1.200M FIXED WEATHER LOUVERS WITH COLOUR CODED WEATHER COWLING.

**SITE ADDRESS:**  
 CAIRNFOLD FARM  
 SAUCHEN  
 INVERURIE  
 ABERDEENSHIRE  
 AB51 7RQ

**CONTACT:**  
 MR J SCULLION  
 SAUCHEN

**TITLE:**  
 ELEVATION DRAWING

PLEASE NOTE NO ASSUMPTION SHOULD BE MADE IN RESPECT TO ANY CONSTRUCTIONAL DETAILS FROM THIS DRAWING. ALL DIMENSIONS ON THIS DRAWING MUST BE CONSIDERED APPROXIMATE. VARIATIONS MAY OCCUR DURING DETAILING. DRAWING PRODUCED FOR PLANNING PURPOSES ONLY. DO NOT SCALE. IF IN DOUBT ASK

**CLIENT:**  
 MR J SCULLION  
 LINTON MAINS

SAUCHEN  
 INVERURIE  
 ABERDEENSHIRE  
 AB51 7LQ

**DRWN BY:** A GOWAN  
**CHK'D BY:** A ROBB  
**A3 SCALE:** 1:200

**DATE:** 25-08-23  
**DATE:** 25-08-23

**REVISIONS:**

REV.	DATE	DESCRIPTION	BY

**DRG. No.** RS23-3097C-7136-02

**ROBINSONS**  
 Grow • Respect • Inspire • Trust • Deliver

Broomhouses 2 Industrial Estate  
 Glasgow Road  
 Lockerbie  
 DG11 2SD  
 Tel: 01576 205 905  
 Fax: 01576 204 466  
 Drawing Office: 01606 330 227