

Offset of grilles Aa and 1a to be confirmed with the finalised cladding build up and detailing and fully co-ordinated.

**SECURITY / ACCESS - Ref CPW Access Plans**

- Main Entrance - Swipe card access control
- Internal access barriers - Swipe card, 1800mm high bi-parting screens.
- Teaching areas - Specialist / Machinery - Swipe card access control.
- Teaching areas - Classrooms - Swipe card access control.
- External terrace - Swipe card access control.
- Ancillary space, stores etc - Suited key (except access control to 00-003)

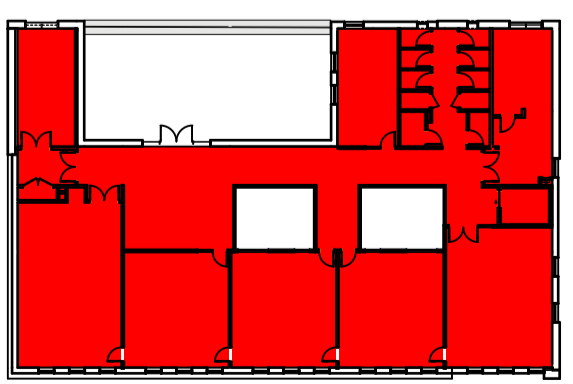
**OTHER**

- External - Blinds for glare only (no blackout blinds).
- Internal - No blinds unless needed for glare.

**GIFA**

Floor	Ground	First	Second	Third	Roof	Total
GIFA	782	790	800	610	37	3019

GIFA 610.33 m<sup>2</sup>



**Plan Key - Occupancy**  
Occ: X+X - Occupancy: Student No. + Staff No.

**Fire / Design Occupancy**

Floor	Ground	First	Second	Third	Total
Student	88	113	172	140	513
Staff	12	10	24	11	57
	100	123	196	151	570
Upper levels		Staff / Student / Total			425 / 45 / 470

As advised by Bureau Veritas - Read with current Bureau Veritas Fire Report - Vertical capacity over staircase 1 and 2 = 850 persons.  
Horizontal capacity 1F/2F/3F 1700/3.6 = 472 persons.  
Total capacity to each of the upper levels 280 persons.

Note: Staff within the building are double counted - within both teaching and staff rooms. With even distribution, in practise, staff can be counted once. There is spare capacity within upper floor staircase capacity for additional students / staff with any future division of 2F lab into two (two groups, +27).

**WC Provision Occupancy**

Note: Duplicate occupancies discounted ('Duplication' / 'Dup')

Floor	Ground	First	Second	Third	Total
Student	66	98	130	128	422
Staff	12	10	7	5	34
	78	108	137	133	456

24 WCs provided. Calculations as BS 6465-1:2006+A1:2009. +25% for individual WC provision. At 100% staff utilisation and 64% student utilisation, there is spare capacity for additional students / staff with any future division of 2F lab into two (two groups).

- P11 Development. KR RN 18/10/2023  
450mm height removed from ground floor, with adjustments to all elements to suit, including staircase configurations and curtain walling arrangements. Facade materials and build up altered to support additional and alternative claddings / elevational treatment. GIFA minor adjustment to suit structural efficiency of roof plant room and elevational arrangements. Window to rear of WC core omitted. Doors / screens onto terrace reduced.
- P10 Development. KR RN 04/08/2023  
Security strategy notes updated. Notes added. Syphonic drainage route indicated. Door / lobby added to staircase 2 for fire and services requirements. Glass screens updated.
- P09 Development. KR RN 14/07/2023  
Emergency egress pass doors added to teaching spaces to north to support fire strategy, and teaching space layout marginally reconfigured. Electrical riser amended. Facade build up further development incorporated - Cladding area reduced. Cladding area stepped steelwork / additional grids indicated. Workshop / Specialist area teaching desks added.
- P08 Development. KR RN 07/07/2023  
Syphonic and data risers adjacent stair 2 swapped positions as per Services Engineer's request. Dry riser inlet / outlet positions indicated. Meeting room glazing enhanced to support fire strategy. Occupancy notes updated in line with Fire engineer information. Facade build up development incorporated - Cladding profile indicated. Area of cladding reduced, brickwork increased (refer to elevations). Terrace parapet coping shown.
- P07 Development. KR RN 19/06/2023  
Window positions revised as per developing elevations. GIFA adjusted to suit elevational impact on external walls. Risers added / amended for co-ordination. Toilet core refined. Specialist labs FFE amended to suit end user discussions.
- P06 Development. Detail added. KR RN 19/05/2023  
Occupancies updated. Staircases refined. Staff kitchenettes added. Balustrades amended. Model refined.
- P05 WIP - Reconfigured scheme to 4 storeys. KR RN 15/05/2023  
2023 February scheme revisited - third floor added, return to 4 storeys, following additional funding. Includes full floor plate at first floor, and an area of roof terrace at third floor level.  
Principals signed 04/05/2023 based on option 1 set out in BCTTF-BBA-XX-PP-A-0021 and meeting discussion.

rev	description	drawn	checked	date

**B**

BOND BRYAN

The Church Studio Springvale Road Sheffield S10 1LP  
t 0114 266 2040  
e info@bondbryan.co.uk  
w www.bondbryan.co.uk

**Bradford College**  
**Bradford College CTF**  
**Thornton Road Site (JM)**  
**Future Technologies Centre (FTC)**  
**Bradford College**

**Proposed Third Floor GA Floor Plan**

Originator project ref	Purpose of Issue
21030	Design
Scale(s)	Status
1:100	S2 Suitable for information
Paper size	Revision
A1	P11 Preliminary

project	originator	volume	level	type	role	number	status	revision
BCTTF-BBA-JM-03-DR-A-2201							S2	P11