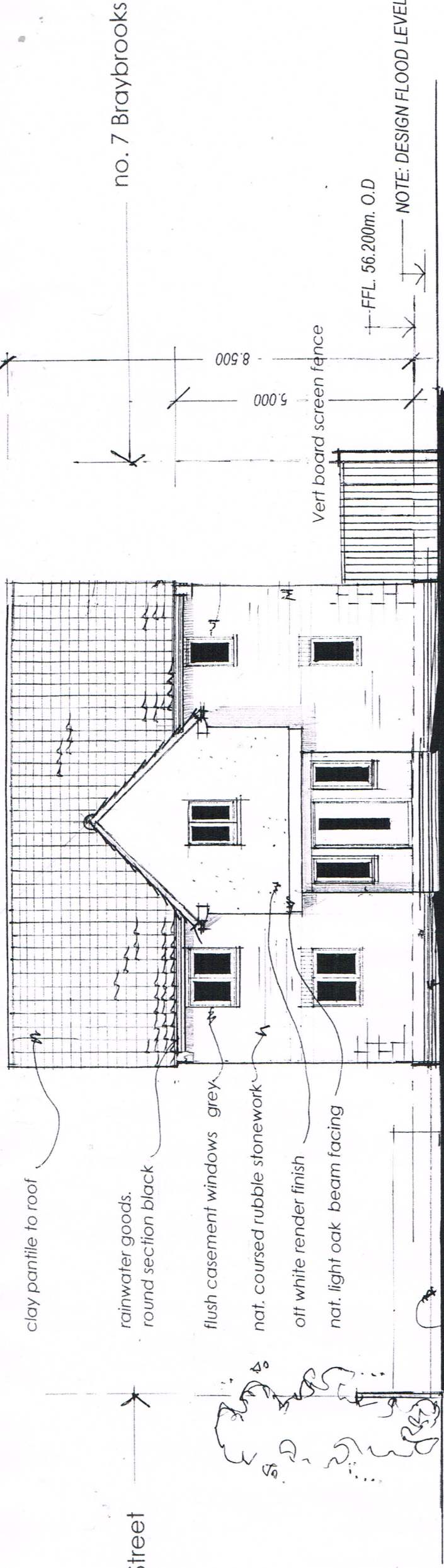


no.33 High Street

no.7 Braybrooks



frontage, north-east elevation 1:100

ELEVATED VEHICLE PARKING DECK  
(2 spaces min 6.0m. x 3.0m.)

eng blue brick up to  
300mm below ffl to frontage

clay pantile to roof  
to suitably match that on adjacent  
Braybrooks development

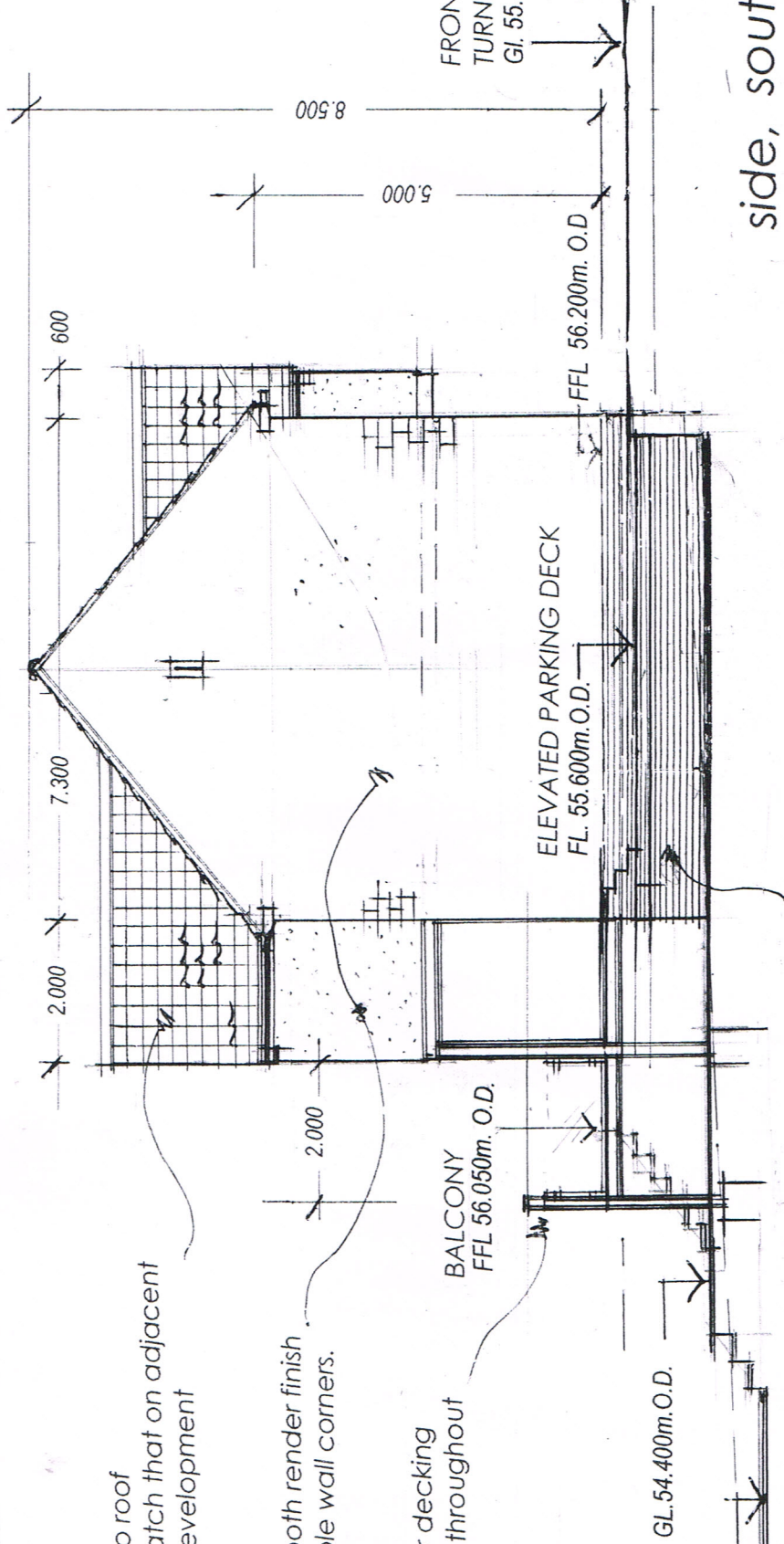
off white, smooth render finish  
quoins to gable wall corners.

Steel framework to rear balcony/terrace, car decking  
and first floor rear range, and support posts throughout  
to be plain galvanised finish throughout

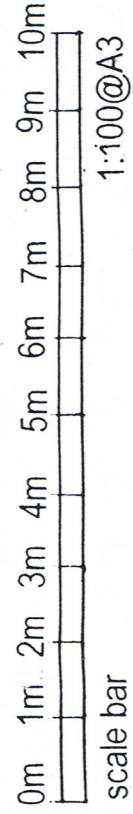
MIDDLE TERRACE AND  
REMAINING AREA  
to continue under dwelling GL.54.400m.O.D.

LOWER LAWNED TERRACE LEVEL 53.900m. O.D.

engineering blue brick to full height  
from ground level to FFL.



side, south-east elevation 1:100



**GRIFFIN ASSOCIATES**  
Oundle  
Peterborough

mob:

scale

date

10/23

drawn

07850 085320

PROPOSED ELEVATIONS

title

drawing no.

rev.

PROPOSED DWELLING  
LAND AT 35 HIGH STREET, BRIGSTOCK

1606 - p - 06