

North Western Avenue (A41)

communal amenity area

cycle storage

bin storage

car park

109 to 114

103 to 108

COURTLANDS CLOSE

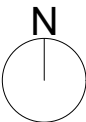
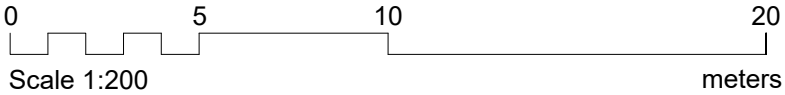
car park

KEY

Site boundary line

PLANNING

NOT FOR CONSTRUCTION



METASHAPE | ARCHITECTS

Revision	Date	Reason	Initial	Notes
-	-	-	-	-

This drawing is for information only and is subject to Planning Approval, Statutory undertaker searches, Building Control Approval and Detailed Design Development.

Do not scale drawing. Figure dimensions to be worked to in all cases.

PROJECT
103-114 Courtlands Close,
Watford, WD24 5GX

TITLE
Existing Site Plan
(Flat No. 103-114)

SCALE
1:200 @A3

DATE
July 2023

DRAWING No
2023-068/P1400

DRAWN
DK

REVIEWED
IPL

REVISION