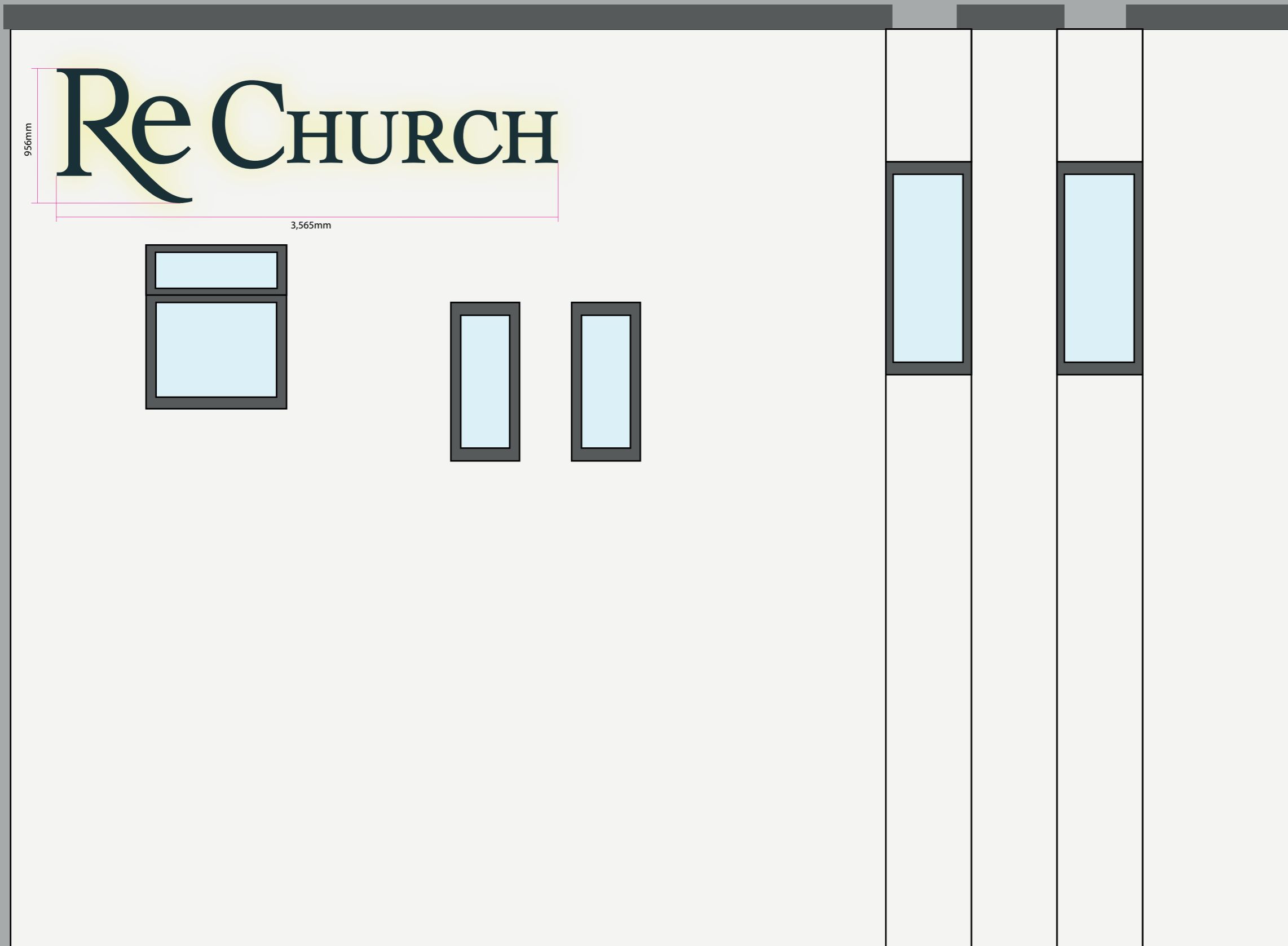


3D Built-up flat faced sign letters. 956mm high 'R' with 50mm deep returns re: 'ReCHURCH'
Manufactured from 0.9mm descaled s/s (304 GRADE) & powder coated to RAL 7016 anthracite grey satin,
Mechanically fixed to the building using screws and plugs using 30mm rear spacers,
Internal WHITE 12v LED illumination, to create a rear facing "HALO" illumination behind each letter.

Illumination details:
Firstlite Prime - 6500k - 6p/m
85 Total Modules
102.0 Watts
1no 150w 12v Driver.
70mm Rear Halo Effect.

Side Elevation



Front Elevation

