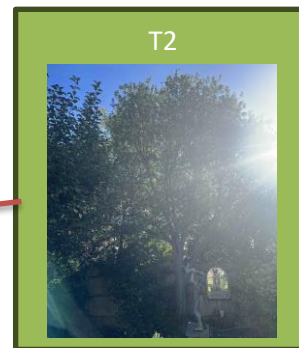
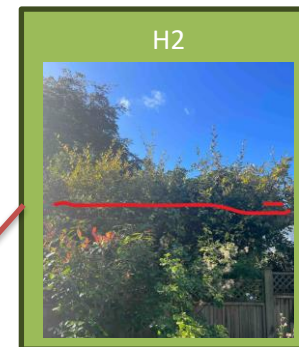
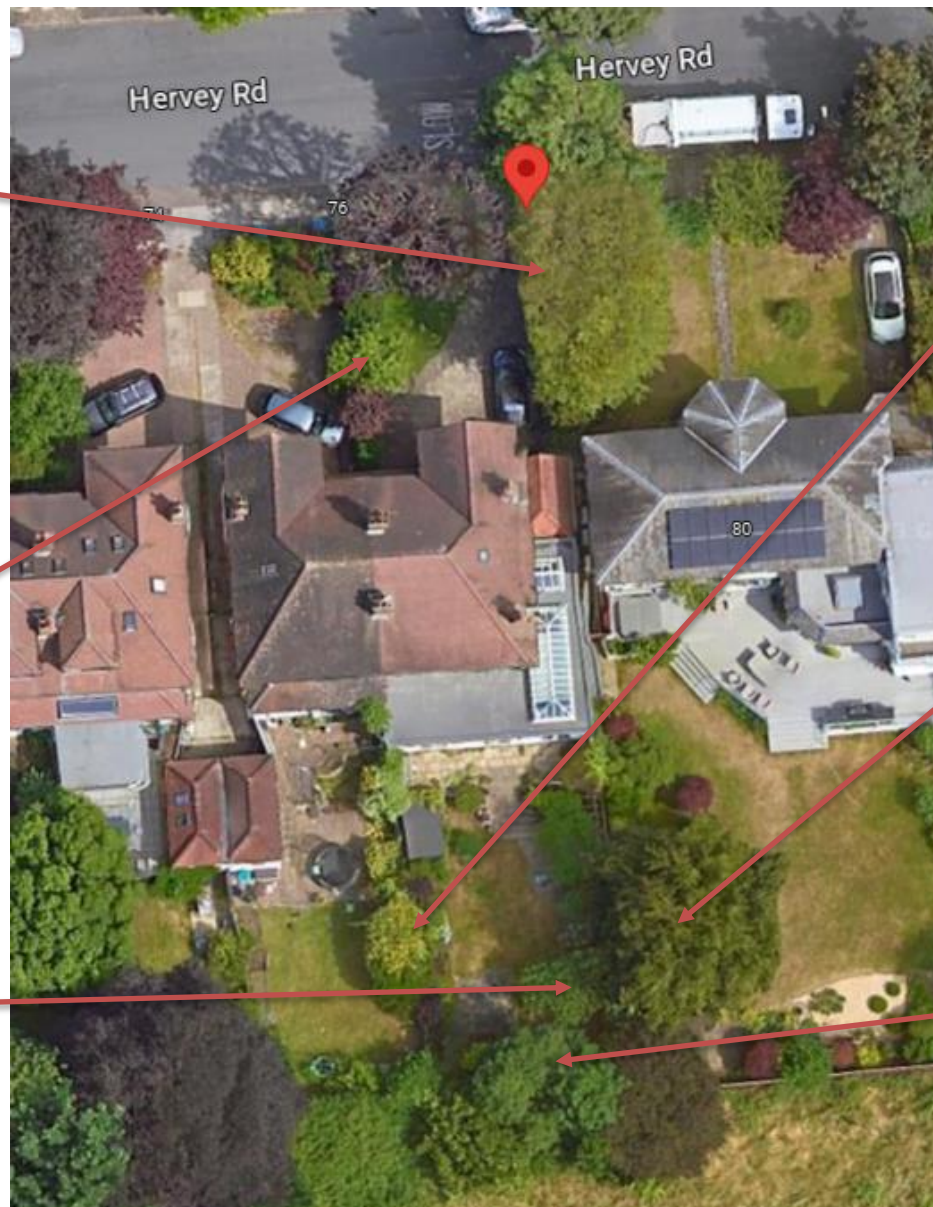
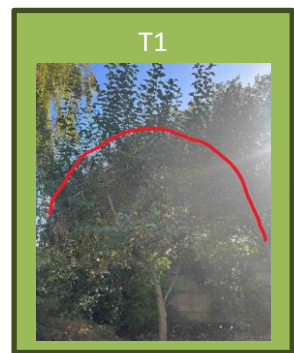
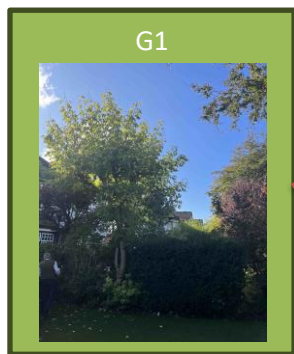
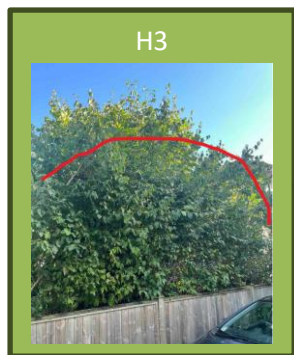


Sketch Plan
78 Hervey Road, Kidbrooke, London, SE3 8BU



Statement of work:

T1 Crab Apple - Rear garden. Crown Reduction - To reduce the overall height and radial spread of the canopy by up to 1 metre maintaining a natural shape. Remove major deadwood.

H1 Elaeagnus - Rear garden LHB: Hedge reduction - To trim back height and garden side only of previous seasons growth to create a tight and compact hedge.

G1 Box Elder, Purple leaved Plum and Yew - Front garden RHB: 2 x trees Crown reduction - (Box Elder and Plum) to reduce back to previous reduction points and trim regrowth only on Yew into a tighter more compact shape.

T2 Pittosporum tenuifolium - Rear boundary: Crown reduction - to lightly shape canopy into a tighter compact shape.

T3 Silver Birch - Neighbouring tree LHB: To reduce a selection lateral limbs extending over client's garden.

H2 Elaeagnus - Neighbouring hedge: Hedge Reduction- to reduce the overall height of the hedge by to 1 metre and shape.

H3 Philadelphus (Mock Orange), Lilac - Neighbouring Hedge LHB: Hedge Reduction - To reduce the overall height by up to 3 metres and shape accordingly.

Reasons for work: General maintenance.