

All file dimensions shall be verified by the contractor on site prior to work commencing.

Do not scale from this drawing

Only work to written dimensions

This drawing is the property of NORTHERN TRUST and copyright is reserved by them. It may only be used in accordance with the terms of the licence.

Notes

MANUAL COLOUR KEY

- Steel fabricwork - Merlin Grey
- Floor cladding - Kingspan KS1000RW Insulated Floor Panel (LPCB Approved) or equal - Colour: Goosewing Grey
- Gutters, Fasciae & Verges - Colour: Goosewing Grey
- Rainwater pipes - Colour to match cladding
- External cladding - Kingspan KS1000RW Insulated Floor Panel (LPCB Approved) or equal - Colour: Goosewing Grey / Merlin Grey. Flashings to match panel colour.
- Blockwork - Rustic Red
- Loading doors - Merlin Grey
- Personnel doors - Merlin Grey
- Windows - Extended Aluminium window sections - Colour: Merlin Grey.
- Glazing tint - Colour: Grey

Handheld areas denote containing columns, actual locations of vertical panels / rear doors may vary slightly to suit siting-out of panels.

CRITICAL DOOR DIMENSIONS

- Internal Doors - Aluminium effective clear width 800mm
- Entrance Doors - Aluminium effective clear width 900mm
- Fire Exit Doors - Aluminium effective clear width 850mm

All vision panels to have minimum zones of visibility.

Minimum 800mm to 800mm and 1150mm to 1500mm.

NOTES

Carly's partners to be provided as indicated, maximum 20m centres and on line of each unit sub-division. Erection plans to be provided to help with backwork as indicated on the Structural Engineers drawings.

Wall ties to be provided as detailed on the Structural Engineers drawings.

REQUIRED U VALUES [tblc]

- Warm Roof Construction-0.16 W/sq.m.K max.
- External Wall Construction-0.26 W/sq.m.K max.

Ground Floor Construction-0.18 W/sq.m.K
[Only applies where space above is heated ie. wc's and offices].

Ground Floor Construction-No U Value
Requirement

Only applies where space above is unheated ie to warehouse.

Windows/Rooflights-1.8W/sq.m.K max.

Personnel Doors-1.8W/sq.m.K max.

Vehicle Access and Similar Large Doors-1.3W/sq.m.K max.

- C 4.10.23 Electric Vehicle Charging Points Added
20% point changing required w/ total car parking provision
DE DE
- B 10-8-22 unit handed to suit site layout
DE DE
- A 9-8-22 2022 part L Impact on U value starting point (L)P/N/E
DE DE

Rev: / Date / Made / Drawn / Checked

PLANNING APPLICATION SUBMISSION



NORTHERN TRUST INVESTMENT / DEVELOPMENT / REGISTRATION
LONDON, NEWCASTLE, NORTHERN TRUST
100, 101, 102, 103, 104, 105, 106, 107, 108, 109, 110, 111, 112, 113, 114, 115, 116, 117, 118, 119, 120, 121, 122, 123, 124, 125, 126, 127, 128, 129, 130, 131, 132, 133, 134, 135, 136, 137, 138, 139, 140, 141, 142, 143, 144, 145, 146, 147, 148, 149, 150, 151, 152, 153, 154, 155, 156, 157, 158, 159, 160, 161, 162, 163, 164, 165, 166, 167, 168, 169, 170, 171, 172, 173, 174, 175, 176, 177, 178, 179, 180, 181, 182, 183, 184, 185, 186, 187, 188, 189, 190, 191, 192, 193, 194, 195, 196, 197, 198, 199, 200, 201, 202, 203, 204, 205, 206, 207, 208, 209, 210, 211, 212, 213, 214, 215, 216, 217, 218, 219, 220, 221, 222, 223, 224, 225, 226, 227, 228, 229, 230, 231, 232, 233, 234, 235, 236, 237, 238, 239, 240, 241, 242, 243, 244, 245, 246, 247, 248, 249, 250, 251, 252, 253, 254, 255, 256, 257, 258, 259, 260, 261, 262, 263, 264, 265, 266, 267, 268, 269, 270, 271, 272, 273, 274, 275, 276, 277, 278, 279, 280, 281, 282, 283, 284, 285, 286, 287, 288, 289, 290, 291, 292, 293, 294, 295, 296, 297, 298, 299, 300, 301, 302, 303, 304, 305, 306, 307, 308, 309, 310, 311, 312, 313, 314, 315, 316, 317, 318, 319, 320, 321, 322, 323, 324, 325, 326, 327, 328, 329, 330, 331, 332, 333, 334, 335, 336, 337, 338, 339, 340, 341, 342, 343, 344, 345, 346, 347, 348, 349, 350, 351, 352, 353, 354, 355, 356, 357, 358, 359, 360, 361, 362, 363, 364, 365, 366, 367, 368, 369, 370, 371, 372, 373, 374, 375, 376, 377, 378, 379, 380, 381, 382, 383, 384, 385, 386, 387, 388, 389, 390, 391, 392, 393, 394, 395, 396, 397, 398, 399, 400, 401, 402, 403, 404, 405, 406, 407, 408, 409, 410, 411, 412, 413, 414, 415, 416, 417, 418, 419, 420, 421, 422, 423, 424, 425, 426, 427, 428, 429, 430, 431, 432, 433, 434, 435, 436, 437, 438, 439, 440, 441, 442, 443, 444, 445, 446, 447, 448, 449, 450, 451, 452, 453, 454, 455, 456, 457, 458, 459, 460, 461, 462, 463, 464, 465, 466, 467, 468, 469, 470, 471, 472, 473, 474, 475, 476, 477, 478, 479, 480, 481, 482, 483, 484, 485, 486, 487, 488, 489, 490, 491, 492, 493, 494, 495, 496, 497, 498, 499, 500, 501, 502, 503, 504, 505, 506, 507, 508, 509, 510, 511, 512, 513, 514, 515, 516, 517, 518, 519, 520, 521, 522, 523, 524, 525, 526, 527, 528, 529, 530, 531, 532, 533, 534, 535, 536, 537, 538, 539, 540, 541, 542, 543, 544, 545, 546, 547, 548, 549, 550, 551, 552, 553, 554, 555, 556, 557, 558, 559, 560, 561, 562, 563, 564, 565, 566, 567, 568, 569, 570, 571, 572, 573, 574, 575, 576, 577, 578, 579, 580, 581, 582, 583, 584, 585, 586, 587, 588, 589, 590, 591, 592, 593, 594, 595, 596, 597, 598, 599, 600, 601, 602, 603, 604, 605, 606, 607, 608, 609, 610, 611, 612, 613, 614, 615, 616, 617, 618, 619, 620, 621, 622, 623, 624, 625, 626, 627, 628, 629, 630, 631, 632, 633, 634, 635, 636, 637, 638, 639, 640, 641, 642, 643, 644, 645, 646, 647, 648, 649, 650, 651, 652, 653, 654, 655, 656, 657, 658, 659, 660, 661, 662, 663, 664, 665, 666, 667, 668, 669, 670, 671, 672, 673, 674, 675, 676, 677, 678, 679, 680, 681, 682, 683, 684, 685, 686, 687, 688, 689, 690, 691, 692, 693, 694, 695, 696, 697, 698, 699, 700, 701, 702, 703, 704, 705, 706, 707, 708, 709, 710, 711, 712, 713, 714, 715, 716, 717, 718, 719, 720, 721, 722, 723, 724, 725, 726, 727, 728, 729, 730, 731, 732, 733, 734, 735, 736, 737, 738, 739, 740, 741, 742, 743, 744, 745, 746, 747, 748, 749, 750, 751, 752, 753, 754, 755, 756, 757, 758, 759, 760, 761, 762, 763, 764, 765, 766, 767, 768, 769, 770, 771, 772, 773, 774, 775, 776, 777, 778, 779, 780, 781, 782, 783, 784, 785, 786, 787, 788, 789, 790, 791, 792, 793, 794, 795, 796, 797, 798, 799, 800, 801, 802, 803, 804, 805, 806, 807, 808, 809, 810, 811, 812, 813, 814, 815, 816, 817, 818, 819, 820, 821, 822, 823, 824, 825, 826, 827, 828, 829, 830, 831, 832, 833, 834, 835, 836, 837, 838, 839, 840, 841, 842, 843, 844, 845, 846, 847, 848, 849, 850, 851, 852, 853, 854, 855, 856, 857, 858, 859, 860, 861, 862, 863, 864, 865, 866, 867, 868, 869, 870, 871, 872, 873, 874, 875, 876, 877, 878, 879, 880, 881, 882, 883, 884, 885, 886, 887, 888, 889, 890, 891, 892, 893, 894, 895, 896, 897, 898, 899, 900, 901, 902, 903, 904, 905, 906, 907, 908, 909, 910, 911, 912, 913, 914, 915, 916, 917, 918, 919, 920, 921, 922, 923, 924, 925, 926, 927, 928, 929, 930, 931, 932, 933, 934, 935, 936, 937, 938, 939, 940, 941, 942, 943, 944, 945, 946, 947, 948, 949, 950, 951, 952, 953, 954, 955, 956, 957, 958, 959, 960, 961, 962, 963, 964, 965, 966, 967, 968, 969, 970, 971, 972, 973, 974, 975, 976, 977, 978, 979, 980, 981, 982, 983, 984, 985, 986, 987, 988, 989, 990, 991, 992, 993, 994, 995, 996, 997, 998, 999, 1000.

Client

Project

Consett, Durham

DH8 6SZ

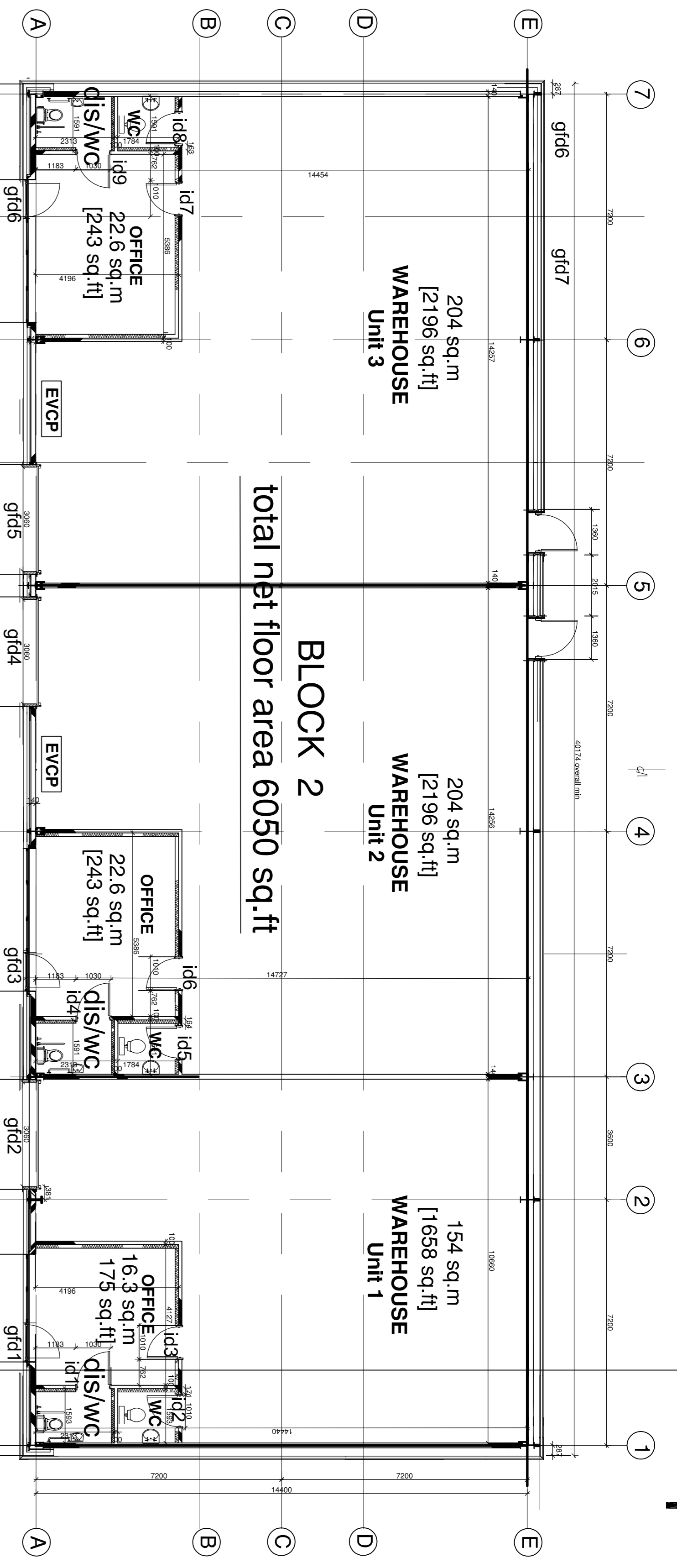
Drawing

BLOCK 2 [Site 'A']

Proposed Plans, Elevations, Sections

Drawn By	DE	Date	28.12.21	Drawing No.	
Checked By/DE		Date	28.12.21	WJ-187-110	C
Scale	1/100		@A1		

electronic path to this drawing-WJ- 187



BLOCK 2
total net floor area 6050 sq.ft

WAREHOUSE Unit 3
204 sq.m
[2196 sq.ft]

WAREHOUSE Unit 2
204 sq.m
[2196 sq.ft]

WAREHOUSE Unit 1
154 sq.m
[1658 sq.ft]

OFFICE
22.6 sq.m
[243 sq.ft]

OFFICE
22.6 sq.m
[243 sq.ft]

OFFICE
16.3 sq.m
[175 sq.ft]

proposed plan

Roof to be Kingspan KS1000RW LPCB / FM approved colour coated trapezoidal roof sheeting to give a U-value of 0.16 W/sq.m.K or better.

External signage as Specification

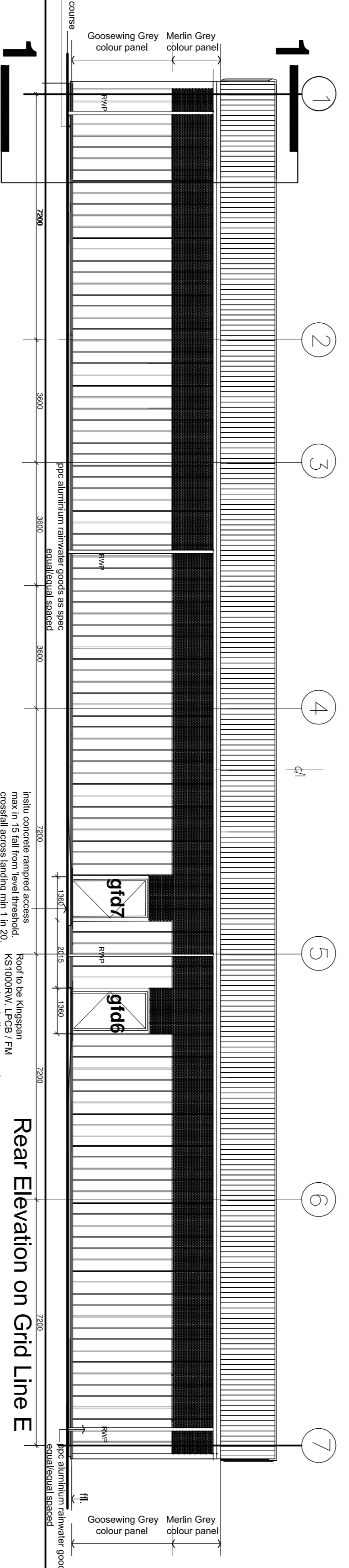
External signage as Specification

Carly wall construction (102mm rustic red facing brickwork half stretcher bond with recessed joints with 150mm cavity with Kingspan K6 parallel fill insulation board with 150mm plaster to achieve a U-value of 0.26 W/sq.m.K or better.

clear glazed top hung opening light clear glazed fixed lights derived thus but 300mm banded to provide obscure panel

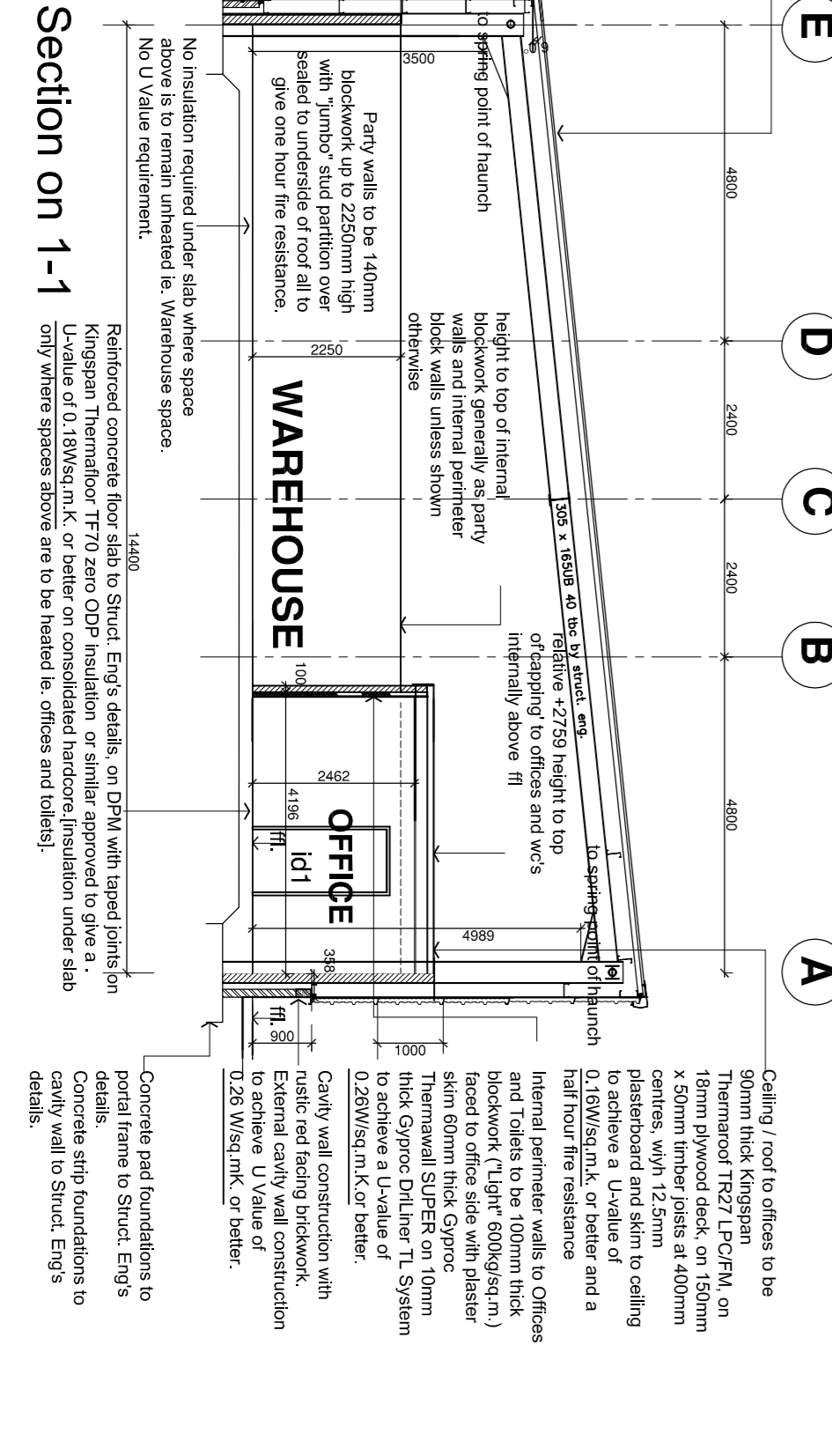
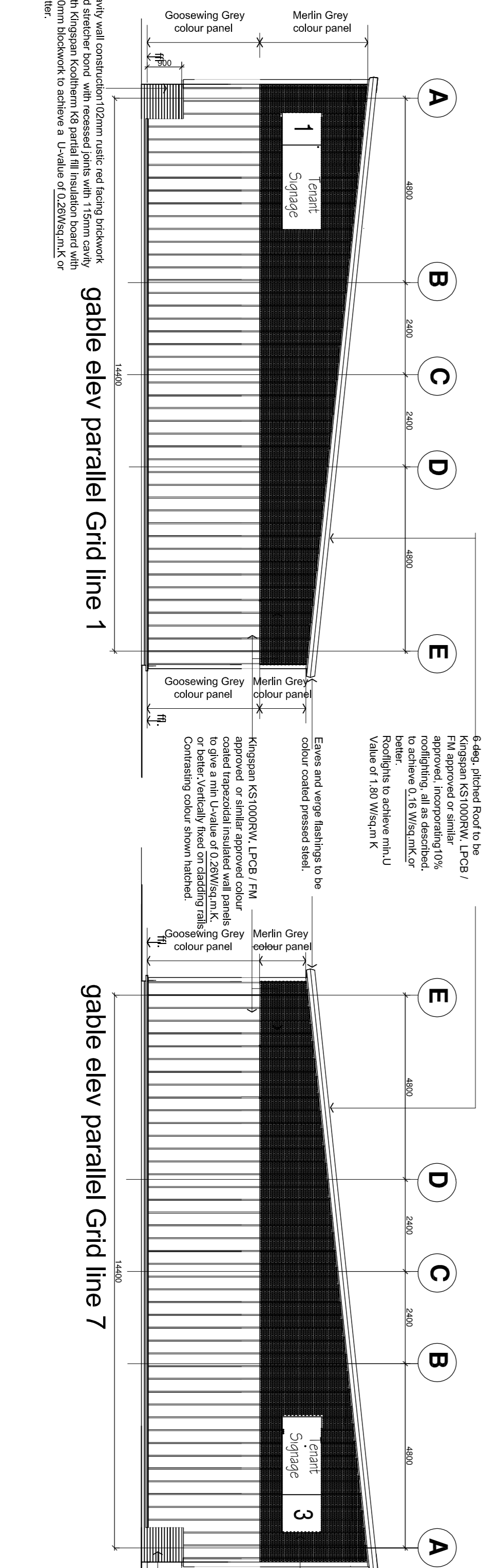
minimum 110 x 20 concealed access vehicular access/entrance open level threshold at entrance to each office.

Carly wall construction (102mm rustic red facing brickwork half stretcher bond with recessed joints with 150mm cavity with Kingspan K6 parallel fill insulation board with 150mm plaster to achieve a U-value of 0.26 W/sq.m.K or better.



Front Elevation on Grid Line A

Rear Elevation on Grid Line E



Section on 1-1

electronic path to this drawing-WJ- 187