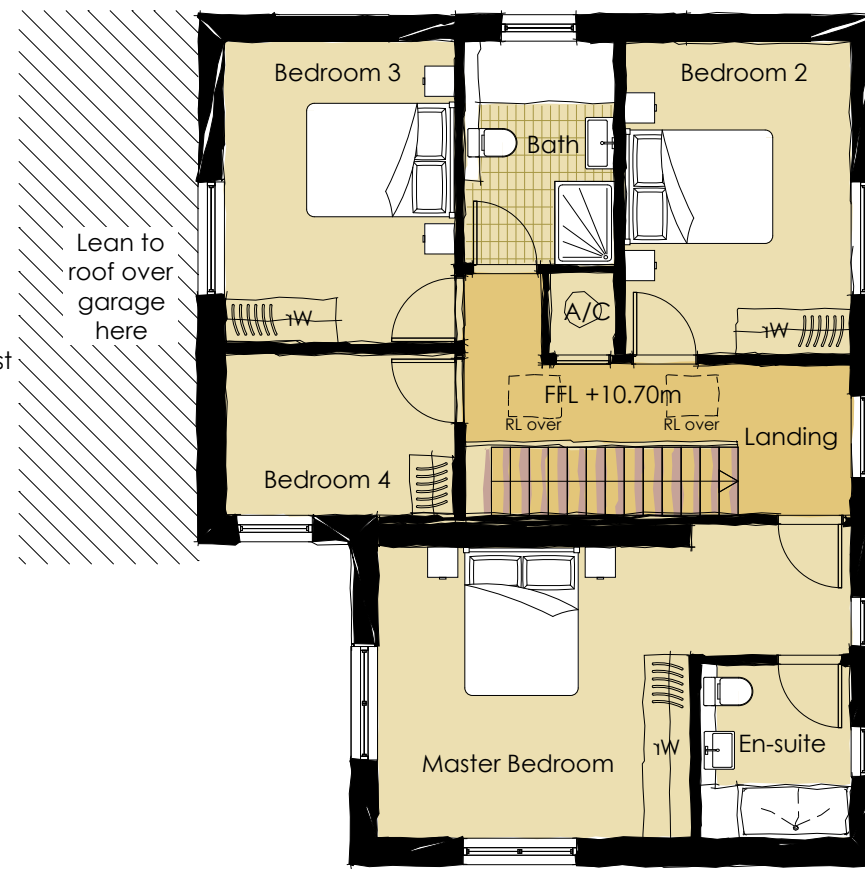
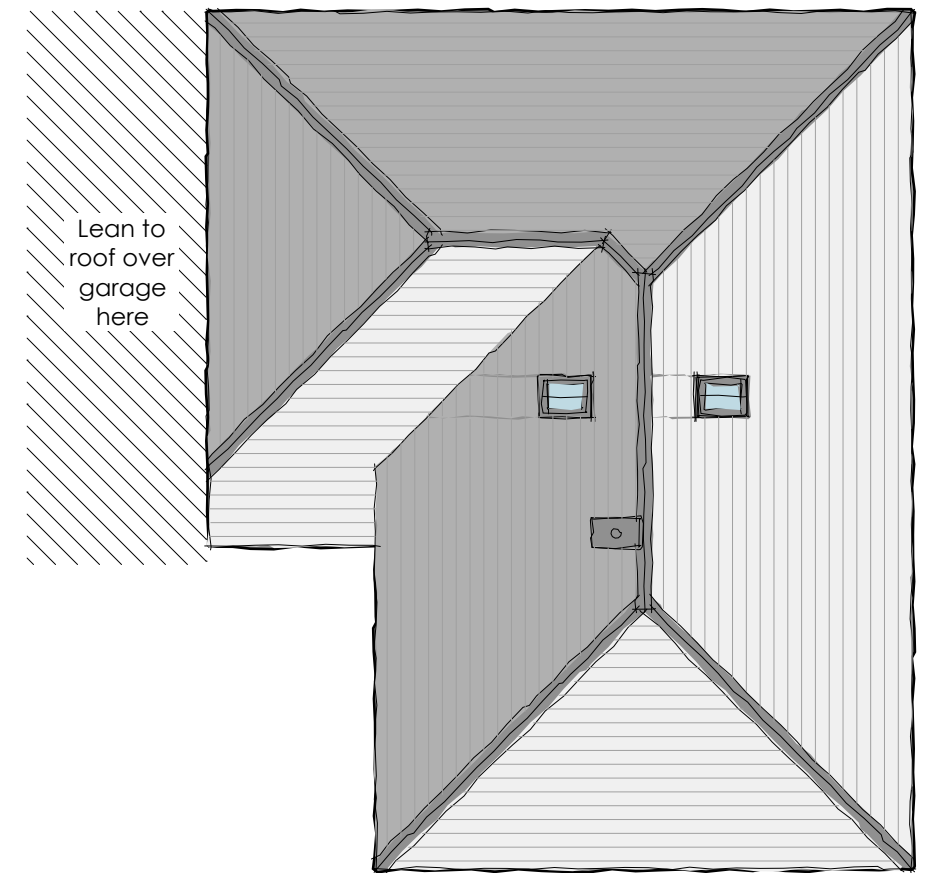


01 - Illustrative Ground Floor Plan



02 - Illustrative First Floor Plan



03 - Illustrative Roof Plan

First Floor GIFA -  
 79sqm / 850sq ft  
 Total GIFA -  
 158sqm / 1,700sq ft

Land South of Fitzroy Road, PL1 5PY

Illustrative 4 bedroom House Type

Drawing 2322 • SK03 @ 1:100

