

AONB

Ampney Park sits just to the South of the Cotswolds AONB, an outstanding landscape that has a distinctive character and natural beauty, the largest of the thirty-eight 'Areas of Outstanding Natural Beauty' in England and Wales.

SSSI

An area that's of particular interest to science due to the rare species of fauna or flora it contains - or even important geological or physiological features that may lie in its boundaries.

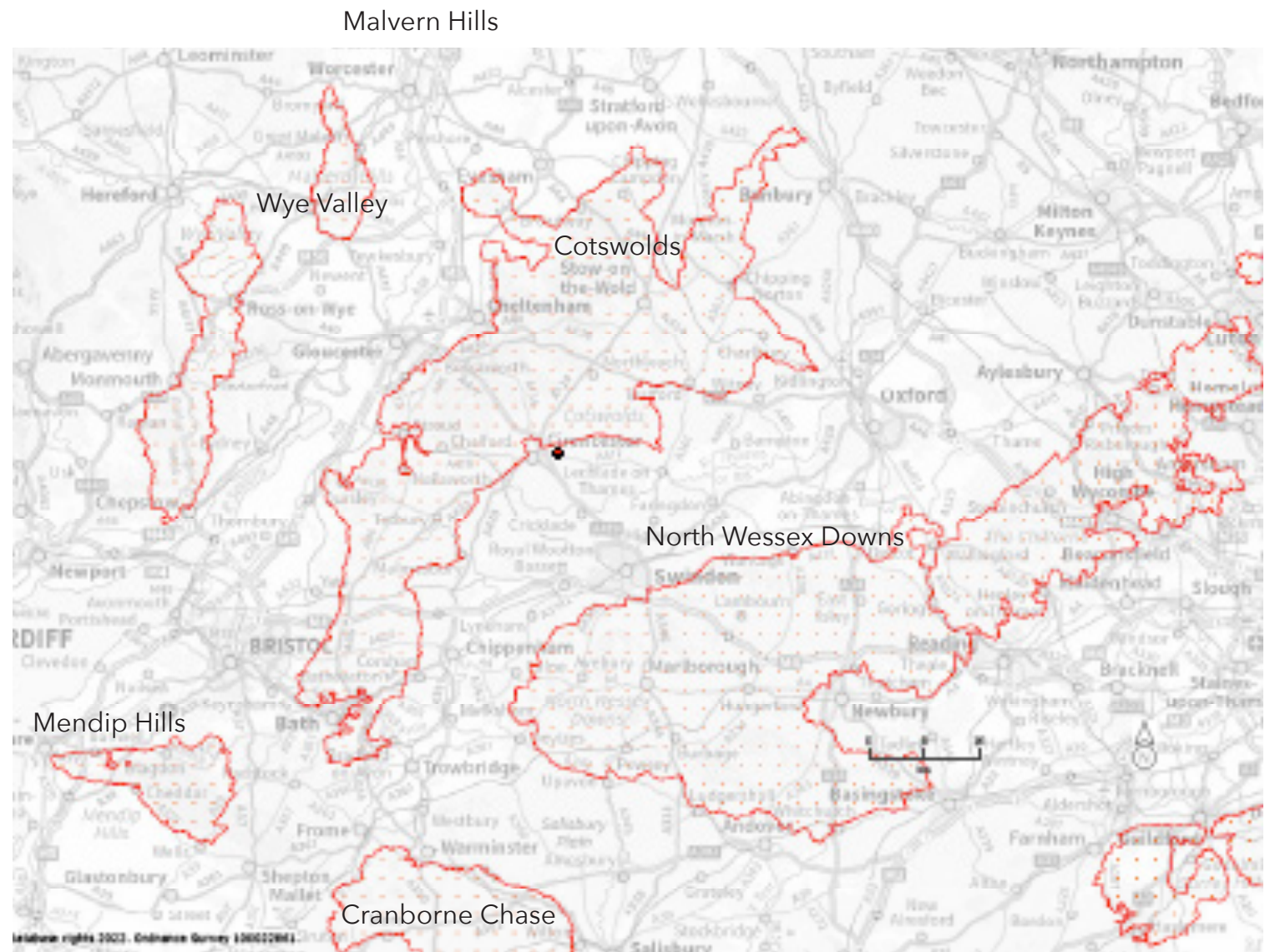
- Barnsley Warren, 3.5km to the north,
- Winson Meadows, 7km to the north
- Whelford Meadow, 8.5km to the east
- Cotswold Water Park, 12km to the east
- Wildmoorway Meadows, 4.5km to south
- Elmlea Meadows, 7km to south
- Upper Waterhay Meadows, 8km to south
- North Meadow Cricklade, 8km to south west
- Clattinger Farm, 10km to south west

SAC

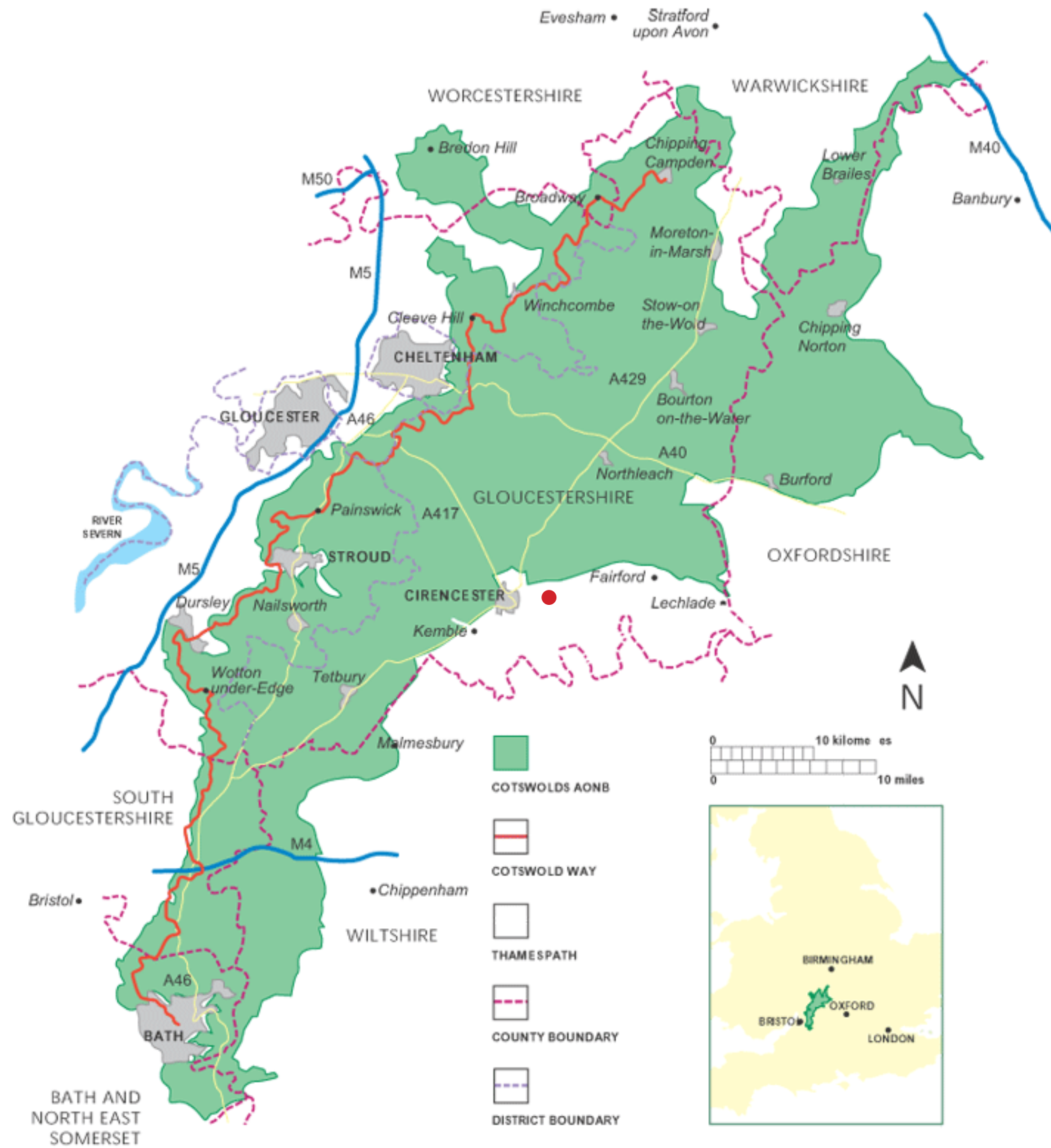
Special areas of conservation designated by the EU's habitat directive

- North Meadow & Clattinger Farm, 8-10km to south west

Please see appendices 1.3/1.6/1.7/1.9/1.10 and 1.11 for more detailed maps and documents of these designations.



A map showing the AONBs surrounding Ampney Park



Cotswolds AONB ~ Ampney Park marked with red dot

Ampney Brook



Length & catchment area of Ampney Brook - Rises west of Barnsley, runs 16km south before joining

The upper reach of the brook, from its source to Ampney Park is situated on a section of unconfined Great Oolite (GO) limestone. However a fault dissects the valley, creating a spring connection with the Inferior Oolite (IO). This section of river is and has been historically, a winterbourne. This fact is reflected in the local name for this section, the Winterwell.

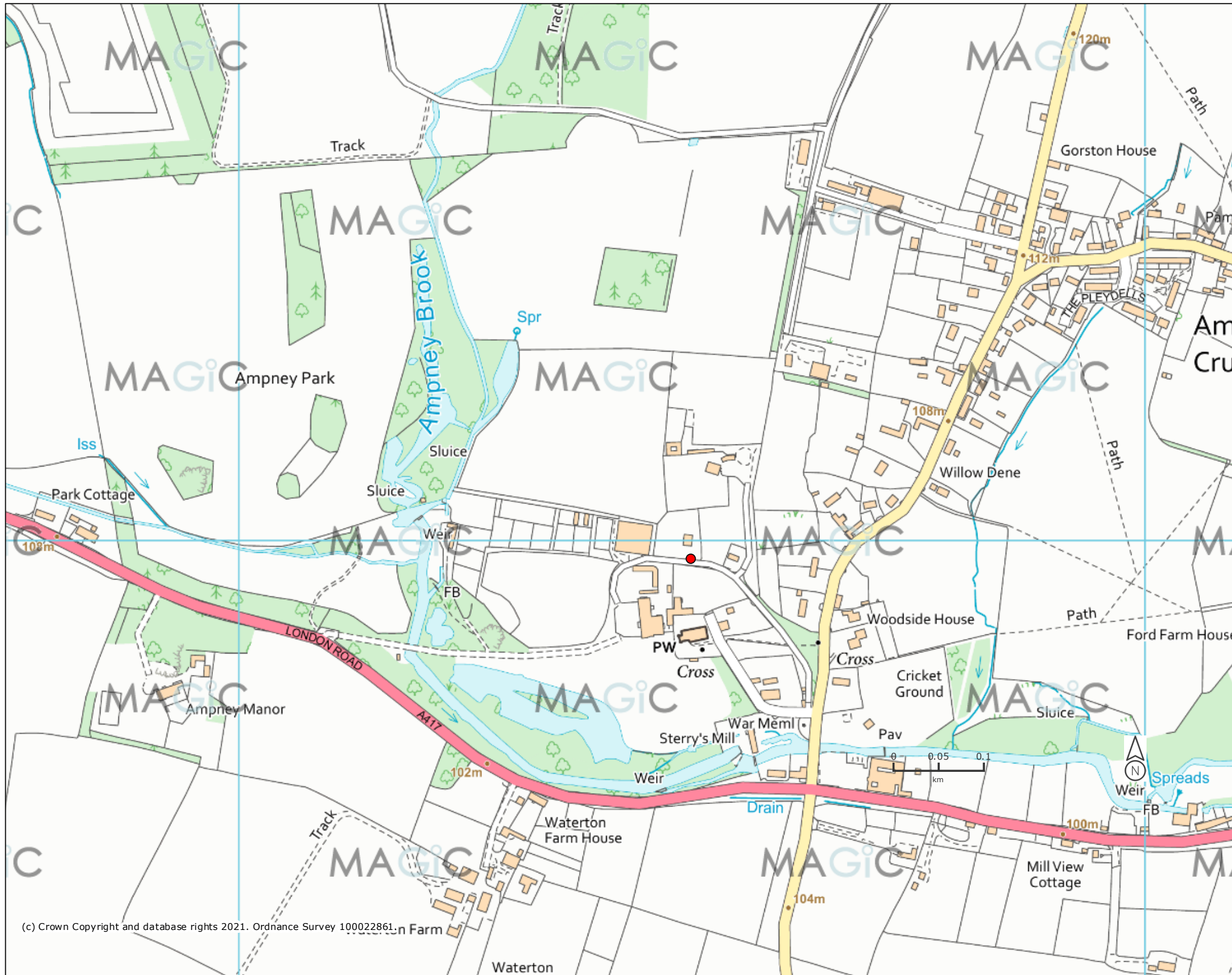
The Winterwell is primarily fed by a system of large, IO springs. Its groundwater catchment is markedly larger than its surface water catchment. As a consequence, during the winter recharge period, the Winterwell receives large volumes of water from the IO aquifer into its relatively small channel; in effect, the Winterwell acts as a "valve" for an extensive section of the I.O. Channel flows during this period are often relatively peaky and can match those seen in the much larger channel of the River Coln. During summer, the Winterwell section loses water to the GO until Ampney Park is reached. By this location, the river is usually dry.

At Ampney Park, the river traditionally accretes flow from a series of dip slope GO springs. The next section downstream, between Ampney Park and Ampney St.Peter, may have connections with the underlying GO. Consequently groundwater is believed to break through the underlying clay cover to feed the brook. However, groundwater levels are believed to be affected by abstraction from the confined GO at both Latton and Meysey Hampton.

Extract from 'HABITAT ADVISORY VISIT, 2004, VAUGHAN LEWIS, WINDRUSH AEC'

MAGiC

Ampney Park - OS Map (Footpaths)



Legend

Projection = OSGB36
xmin = 405400
ymin = 201400
xmax = 407400
ymax = 202700
Map produced by MAGiC on 25 January, 2022.
Copyright resides with the data suppliers and the map must not be reproduced without their permission. Some information in MAGiC is a snapshot of the information that is being maintained or continually updated by the originating organisation. Please refer to the metadata for details as information may be illustrative or representative rather than definitive at this stage.

Network Enhancement Zone 1: Land connecting existing patches of primary and associated habitats which is likely to be suitable for creation of the primary habitat. Factors affecting suitability include: proximity to primary habitat, land use (urban/ rural), soil type, slope and proximity to coast. Action in this zone to expand and join up existing habitat patches and improve the connections between them can be targeted here.

Network Enhancement Zone 2: Land connecting existing patches of primary and associated habitats which is less likely to be suitable for creation of the primary habitat. Action in this zone that improves the biodiversity value through land management changes and/or green infrastructure provision can be targeted here.

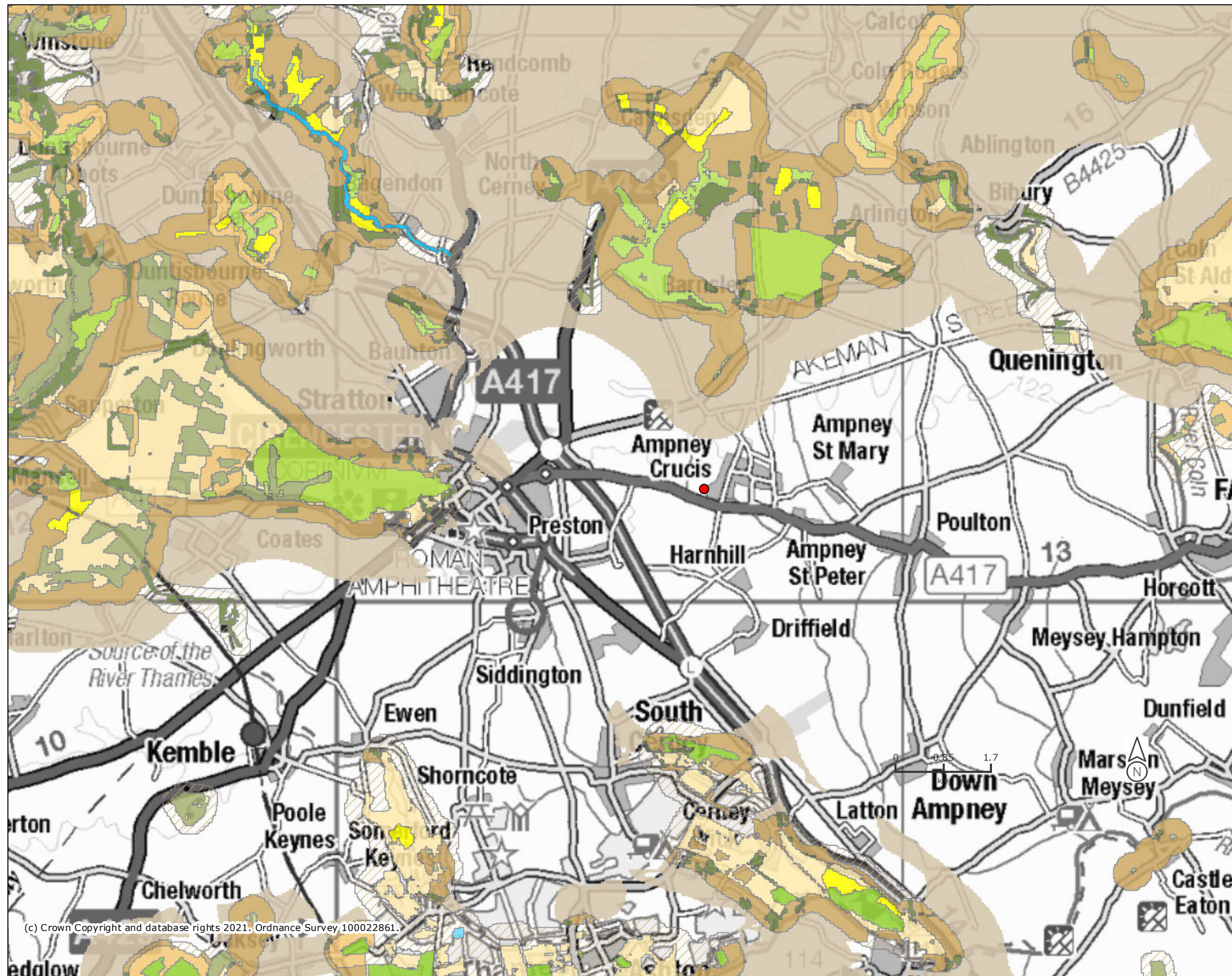
Network Expansion Zone: Land beyond the Network Enhancement Zones with potential for expanding, linking/joining networks across the landscape i.e. conditions such as soils are potentially suitable for habitat creation for the specific habitat in addition to Enhancement Zone 1. Action in this zone to improve connections between existing habitat networks can be targeted here.

Associated habitats - these are not identified on the combined map as the vast majority of habitats listed as associated habitat on the individual habitat network maps will be identified on the combined map as a primary habitat. Any associated habitat that does not have an individual habitat network map plus all other priority habitat is shown on the combined map as 'PHI_Other'.

Habitat Creation/Restoration: Areas where work is underway to either create or restore the primary habitat.

MAGiC

Ampney Park - Habitat Network



Legend

National Habitat Network All Habitats Combined (England)

- Ancient woodland
- Blanket bog
- Coastal saltmarsh
- Coastal sand dunes
- Coastal vegetated shingle
- Lakes
- Limestone pavement
- Lowland calcareous grassland
- Lowland dry acid grassland
- Lowland fens
- Lowland heathland
- Lowland meadows
- Lowland raised bog
- Maritime cliff & slope
- Purple moor grass & rush pastures
- Reedbeds
- Rivers
- Traditional orchard
- Upland calcareous grassland
- Upland flushes fens & swamps
- Upland hay meadow
- Upland heathland
- Wood pasture and parkland
- PHI_Other
- Additional land within SSSIs
- Habitat Restoration-Creation
- Restorable Habitat
- Fragmentation Action Zone
- Network Enhancement Zone 1
- Network Enhancement Zone 2
- Network Expansion Zone

Projection = OSGB36
 xmin = 389500
 ymin = 191000
 xmax = 420700
 ymax = 212900

Map produced by MAGiC on 25 January, 2022.
 Copyright resides with the data suppliers and the map must not be reproduced without their permission. Some information in MAGiC is a snapshot of the information that is being maintained or continually updated by the originating organisation. Please refer to the metadata for details as information may be illustrative or representative rather than definitive at this stage.

(c) Crown Copyright and database rights 2021. Ordnance Survey 100022861.

General site character

Habitats that are a primary reason for selection of this site

Habitats present as a qualifying feature, but not a primary reason for selection of this site

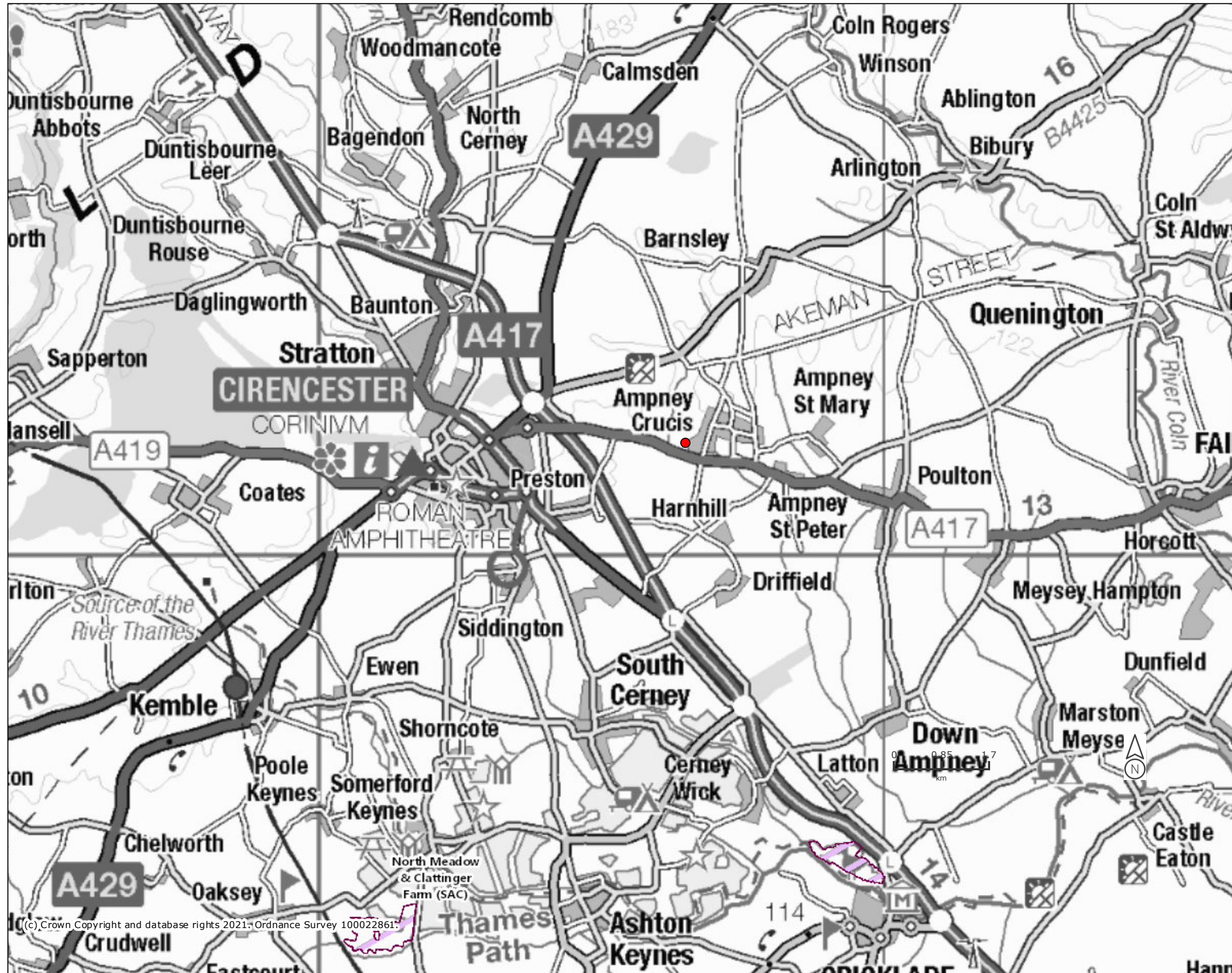
Species that are a primary reason for selection of this site

Species present as a qualifying feature, but not a primary reason for site selection

Many designated sites are on private land: the listing of a site in these pages does not imply any right of public access.

MAGiC

Ampney Park Special Protection Area (SAC)



Legend

- Special Areas of Conservation (England)

Projection = OSGB36
xmin = 389800
ymin = 190200
xmax = 421000
ymax = 212100

Map produced by MAGiC on 25 January, 2022.
Copyright resides with the data suppliers and the map must not be reproduced without their permission. Some information in MAGiC is a snapshot of the information that is being maintained or continually updated by the originating organisation. Please refer to the metadata for details as information may be illustrative or representative rather than definitive at this stage.

Ampney Park - Parkland



Legend

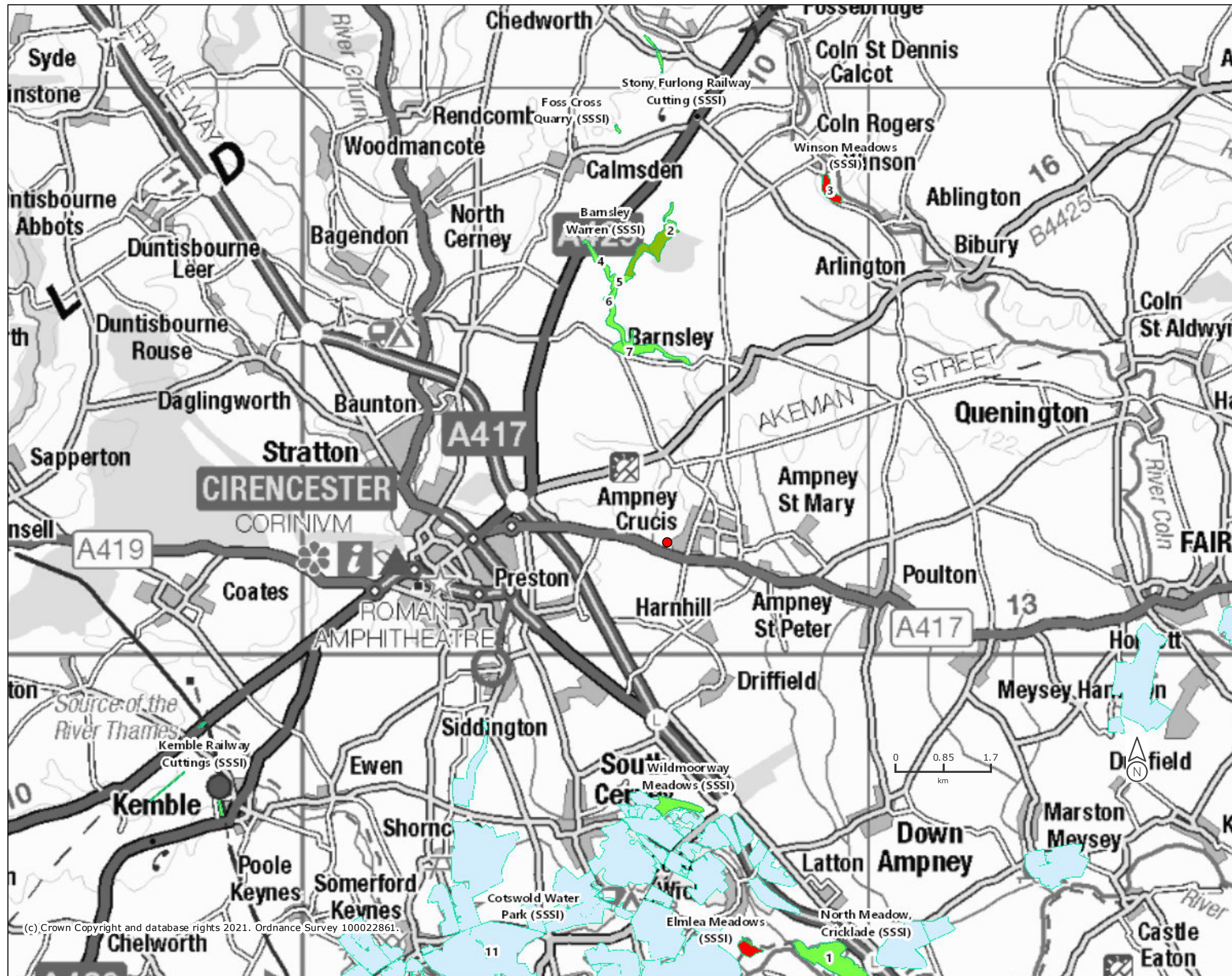
- Woodpasture and Parkland BAP Priority Habitat (England)

Projection = OSGB36
 xmin = 402500
 ymin = 199200
 xmax = 410400
 ymax = 204700

Map produced by MAGiC on 25 January, 2022.
 Copyright resides with the data suppliers and the map must not be reproduced without their permission. Some information in MAGiC is a snapshot of the information that is being maintained or continually updated by the originating organisation. Please refer to the metadata for details as information may be illustrative or representative rather than definitive at this stage.

(c) Crown Copyright and database rights 2021. Ordnance Survey 100022861.

Ampney Park - SSSI



Legend

Sites of Special Scientific Interest Units (England)

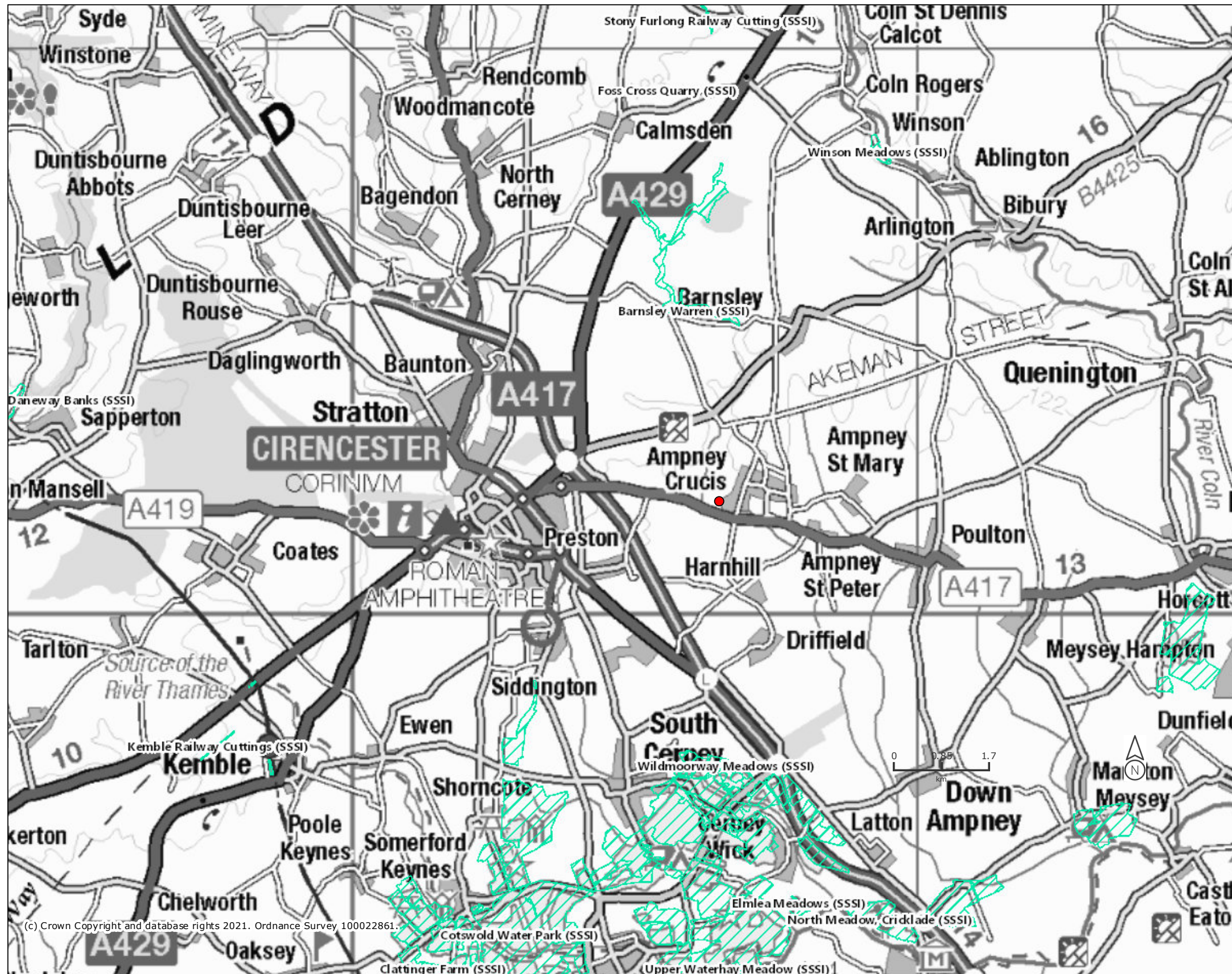
- Favourable Condition
- Unfavourable Recovering
- Unfavourable no change
- Unfavourable Declining
- Part Destroyed
- Destroyed
- Not Assessed
- Sites of Special Scientific Interest (England)

Projection = OSGB36
 xmin = 389500
 ymin = 191900
 xmax = 421800
 ymax = 213800

Map produced by MAGiC on 25 January, 2022.
 Copyright resides with the data suppliers and the map must not be reproduced without their permission. Some information in MAGiC is a snapshot of the information that is being maintained or continually updated by the originating organisation. Please refer to the metadata for details as information may be illustrative or representative rather than definitive at this stage.

MAGiC

Ampney Park SSSI's Wider



Legend

Sites of Special Scientific Interest (England)

Projection = OSGB36
 xmin = 389200
 ymin = 191200
 xmax = 420400
 ymax = 213100

Map produced by MAGiC on 25 January, 2022.
 Copyright resides with the data suppliers and the map must not be reproduced without their permission. Some information in MAGiC is a snapshot of the information that is being maintained or continually updated by the originating organisation. Please refer to the metadata for details as information may be illustrative or representative rather than definitive at this stage.

(c) Crown Copyright and database rights 2021. Ordnance Survey 100022861.

MAGiC

Ampney Park SSSI Impact Risk Zone



Legend

- Sites of Special Scientific Interest (England)
- SSSI Impact Risk Zones - to assess planning applications for likely impacts on SSSIs/SACs/SPAs & Ramsar sites (England)

Projection = OSGB36
 xmin = 398500
 ymin = 196200
 xmax = 414000
 ymax = 207100

Map produced by MAGiC on 25 January, 2022.
 Copyright resides with the data suppliers and the map must not be reproduced without their permission. Some information in MAGiC is a snapshot of the information that is being maintained or continually updated by the originating organisation. Please refer to the metadata for details as information may be illustrative or representative rather than definitive at this stage.

(c) Crown Copyright and database rights 2021. Ordnance Survey 100022861:rtt:works

Ampney Park - Newt Survey



Legend

- Great Crested Newt Class Survey
- ◆ Licence Returns (England)

Great Crested Newt Pond Surveys 2017 - 2019

- 10 FIG present
- 10 FIG absent
- 10 FIG inconclusive
- 8 FIG present
- 6 FIG present
- 4 FIG present
- 4 FIG absent
- 4 FIG inconclusive

Projection = OSGB36
 xmin = 402000
 ymin = 199300
 xmax = 409800
 ymax = 204800

Map produced by MAGiC on 25 January, 2022.
 Copyright resides with the data suppliers and the map must not be reproduced without their permission. Some information in MAGiC is a snapshot of the information that is being maintained or continually updated by the originating organisation. Please refer to the metadata for details as information may be illustrative or representative rather than definitive at this stage.

© Crown Copyright and database rights 2021. Ordnance Survey, 100022861.

Ampney Park - Parks and Garden



Legend

- Registered Parks and Gardens (England)

Projection = OSGB36
 xmin = 397500
 ymin = 197000
 xmax = 413000
 ymax = 207900

Map produced by MAGiC on 25 January, 2022.
 Copyright resides with the data suppliers and the map must not be reproduced without their permission. Some information in MAGiC is a snapshot of the information that is being maintained or continually updated by the originating organisation. Please refer to the metadata for details as information may be illustrative or representative rather than definitive at this stage.

(c) Crown Copyright and database rights 2021. Ordnance Survey 100022861.