

**Engineering Key:**

- AF1 — Indicates adoptable foul sewer
- AS1 — Indicates adoptable storm sewer
- F1 — Foul private water inspection chamber/manhole
- S1 — Storm private water inspection chamber/manhole
- Private foul rising main
- Indicates Back drop
- Foul/storm water Type 4F chamber
- Rodding eye
- Rainwater down pipe
- Soil vent pipe/internal drainage point
- Pipe diameter / Pipe gradient
- Denotes direction of surface fall
- Yard gully
- Road gully
- 'ACO' channel drain or similar approved, Channel to incorporate silt trap at outfall.
- Proposed building finished floor level
- Proposed finished level
- Dropper Kerb
- Retaining wall indicating retained height
- Gravel board height
- Indicates raised D.P.C required
- Denotes underbuild, and number of exposed brick courses (in addition to the standard 2) below dpc.
- Street lighting column to Surrey CC Highways Specification.
- Denotes block paved carriageway.
- Permeable Block Paving.
- Denotes no dig construction

**Surface Water Schedule**

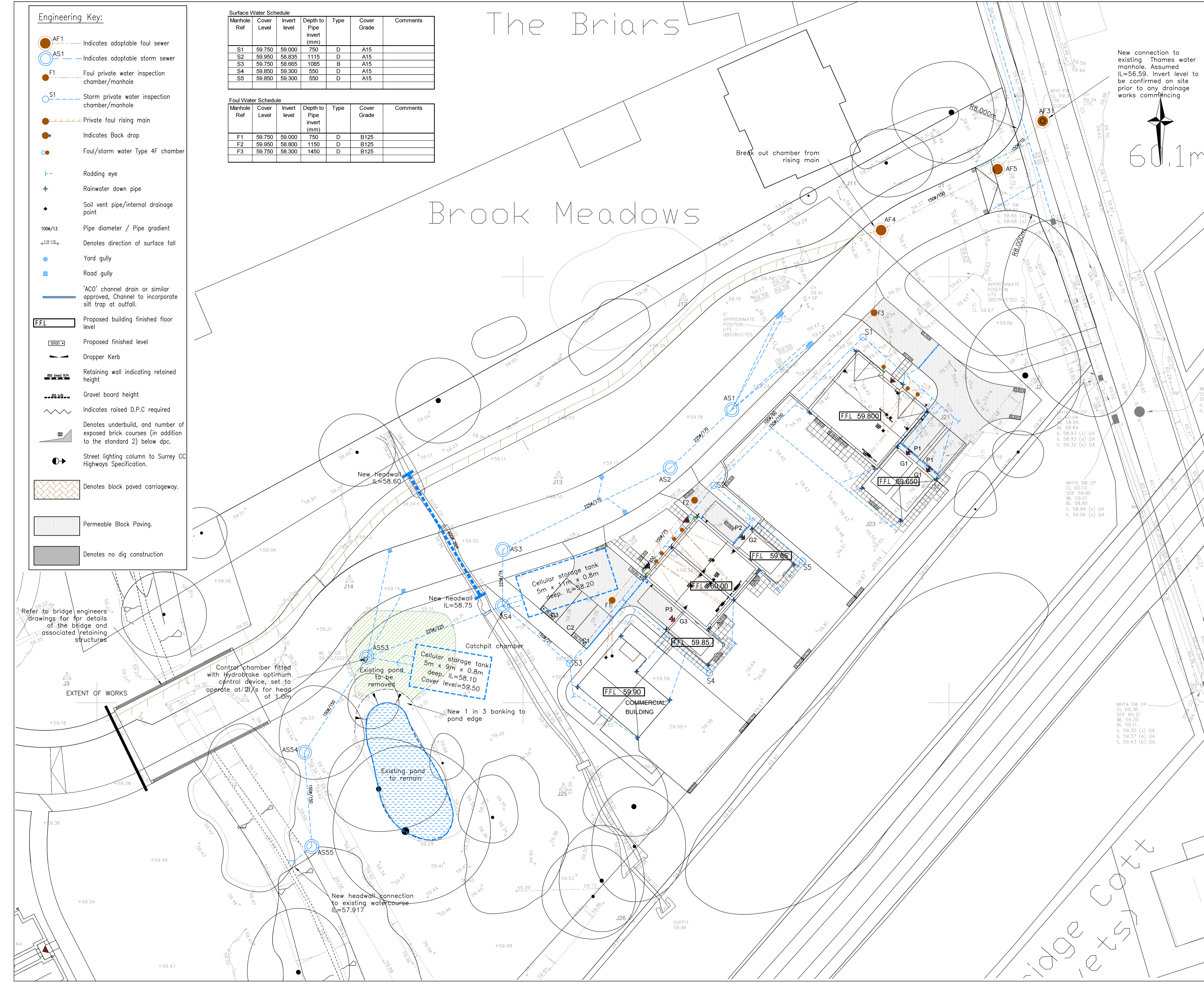
Manhole Ref	Cover Level	Invert level	Depth to Pipe invert (mm)	Type	Cover Grade	Comments
S1	59.750	59.000	750	D	A15	
S2	59.950	58.835	1115	D	A15	
S3	59.750	58.665	1085	B	A15	
S4	59.850	59.300	550	D	A15	
S5	59.850	59.300	550	D	A15	

**Foul Water Schedule**

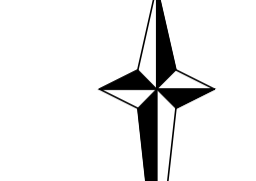
Manhole Ref	Cover Level	Invert level	Depth to Pipe invert (mm)	Type	Cover Grade	Comments
F1	59.750	59.000	750	D	B125	
F2	59.950	58.800	1150	D	B125	
F3	59.750	58.300	1450	D	B125	

The Briars

Brook Meadows



New connection to existing Thames water manhole. Assumed IL=56.59. Invert level to be confirmed on site prior to any drainage works commencing



60.1m

**Notes**

1. All pipe runs are to be 100mm nominal diameter unless otherwise stated.
2. For information and setting out of internal drainage points refer to Architects layout drawings.
3. The contractor is responsible for providing gullies at all low spots in private areas.
4. All chamber cover levels given are approximate to +/- 50mm.
5. For details of external finishes refer to Landscape Architects layout plans.
6. Pipe gradients are for guidance only. For precise invert levels of manholes, please refer to manhole schedule.
7. All redundant private pipework to be broken out and connections stopped up.
8. All private drainage beneath adoptable carriageway shall be vitrified clay extra strength and with concrete bed and surround should cover depth be less than 1.2m.
9. All level entrances with no channel drain indicated to have level threshold drain installed to architects detail, discharging to granular pit underneath.

REV	DATE	AMENDMENT	BY	CHKD
J	07.08.23	Entry ramps updated to match S278	LRW	LRW
H	31.07.23	Issued for construction	LRW	LRW
G	2.04.23	EXF6 renamed to AF31, Private schedule updated	LRW	LRW
F	31.01.23	Tanks and outfall route amended pond removed. AF1-3 removed	LRW	LRW
E	17.01.23	Block paving to entrance table removed	LRW	LRW
D	21.12.22	No dig areas added	LRW	LRW
C	27.09.22	Permeable paving changed to tanked, Drawing title updated	LRW	LRW
B	10.08.22	Key updated, Additional levels added	DJB	LRW
A	29.06.22	Site Plan and drainage Updated.	DJB	LRW

STATUS **Construction**

PROJECT  
Ockham Road,  
East Horsley



DRAWING  
Engineering Layout  
Sheet 1 of 3

DATE 03.05.22 DRAWN BY DJB  
 SCALES (A1)- 1:200 CHECKED BY LRW  
 DRG NO. C7476/CE8

Walker Associates Consulting Limited  
 Structural and Civil Engineers  
 13 Capri Court  
 Cranes Farm Road  
 Bawdson, Essex  
 S514 3JL  
 01268 530 500  
 walker-associates.co.uk