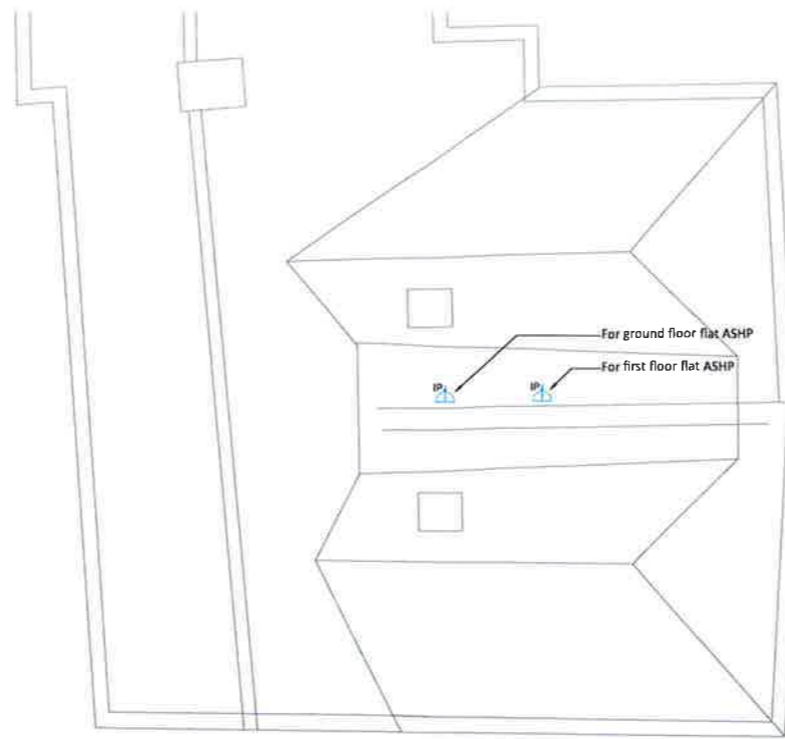
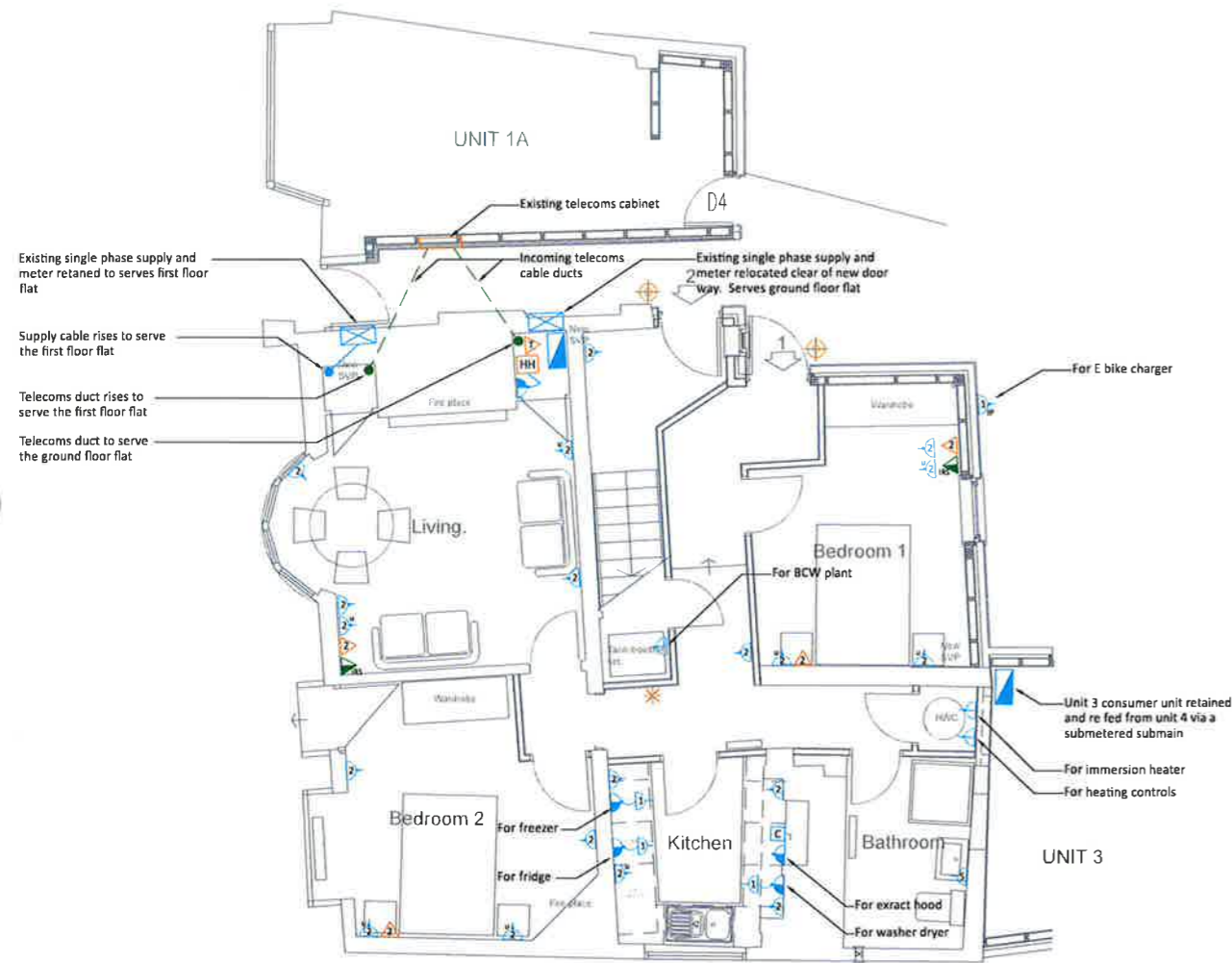


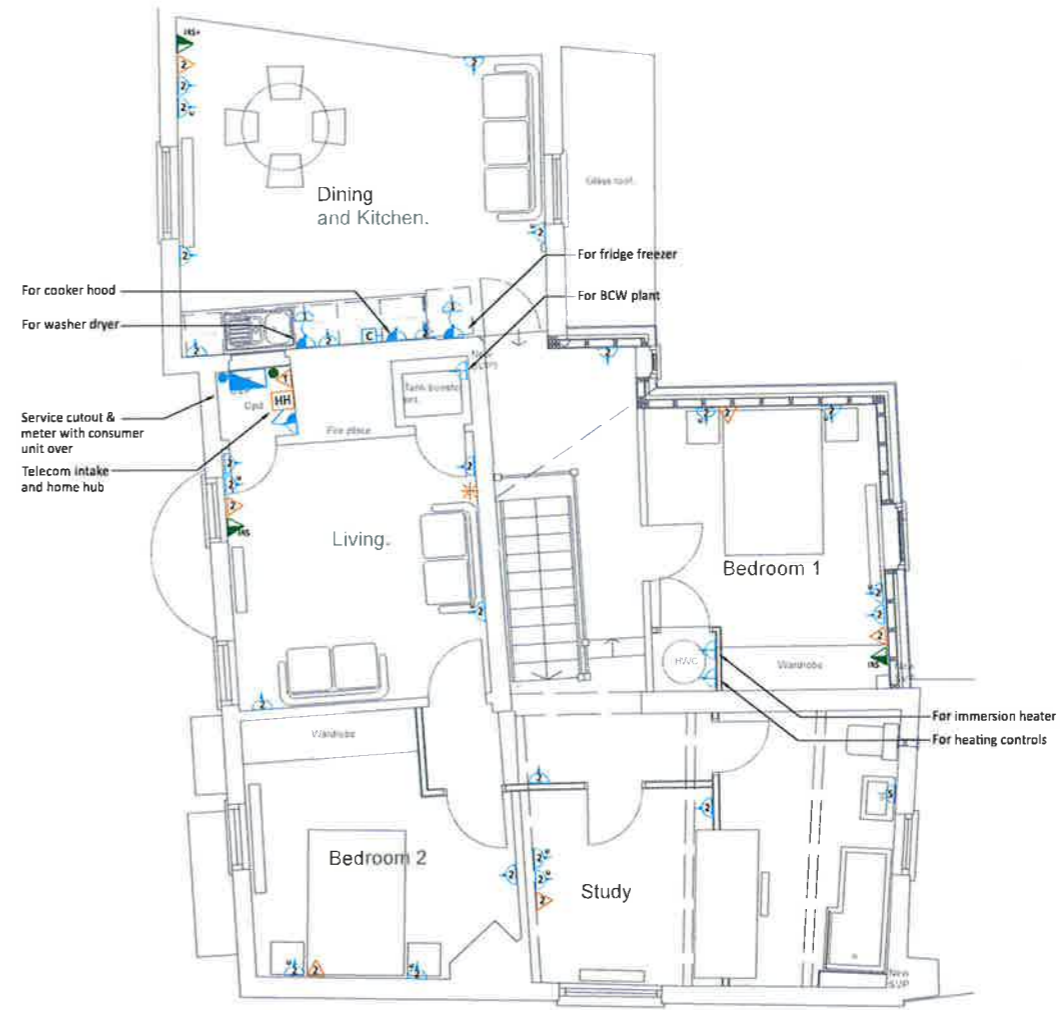
LEGEND	
	1 gang switched socket outlet
	2 gang switched socket outlet
	2 gang switched socket outlet c/w 2 gang USB socket outlets (1 x type A, 1 x type C)
	1 gang unswitched socket outlet
	2 gang unswitched socket outlet
	Fused connection unit switched, x denotes: F = flex outlet (including final connection to appliance) N = neon indicator
	Fused connection unit unswitched, x denotes: F = flex outlet (including final connection to appliance) N = neon indicator
	Double pole switch, 'n' denotes current rating
	Cooker point : 45A double pole switch with neon indicator, engraved 'cooker', controlling cooker connection unit, final connection to cooker
	Fused connection unit controlling unswitched socket outlet
	Shaver socket, dual voltage, double wound isolating transformer
	Main switchgear or submain switchgear
	Distribution board
	Door bell push button
	Door bell sounder
	'n' gang structured wiring/data outlet plate
	Incoming telephone/broadband point
	Home hub
	Entry system control panel
	Entry system handset
	Entry system call panel
	Triplex Integrated Reception System outlet (satellite, off air TV and FM/DAB radio)
	Quad Integrated Reception System outlet (satellite, satellite, off air TV and FM/DAB radio)
	Integrated reception system multswitch/amplifier



Proposed roof.



Ground floor.



First floor.

DO NOT SCALE THIS DRAWING.

Copyright of this drawing and all associated Waterfox information remains vested in Waterfox Consultancy Ltd. Licence to use, reproduce and issue is not permitted by any third party.

This drawing is to be read in conjunction with associated drawings and specifications.

This drawing together with associated drawings have been prepared to indicate the standard and performance of installation only and are not intended as a definitive design. They also show possible routes of services but it is stressed that these routes have not been surveyed in detail and are purely indicative of how the specification might possibly be interpreted.

BASE DRAWING

NOTES

1. This drawing shall be read in conjunction with all other mechanical, electrical, public health, architectural and structural drawings and specifications for this project.
2. The works comprise design, manufacturing, factory testing, supply, delivering to site, manoeuvring into position, erection, connecting up, testing, commissioning, performance testing and handing over in working order the complete electrical installation.
3. Include all items of either a temporary or permanent nature which may or may not be detailed or shown on the drawings but which are by implication associated with the works or by generally accepted standards of good practice necessary and/or essential to render the installation complete and safe in operation.
4. Ensure the completed installation meets the specified and/or implied performance for the installation.
5. Carry out the works and complete the works in every respect to the reasonable satisfaction of the engineer and in conformity with the reasonable directions and requirements of the Engineer.
6. The works shall be carried out in accordance with the 18th edition of the IEE wiring regulations BS7671 including amendments 1 & 2 (2022) and in accordance with all other relevant British Standards, codes of practice etc.
7. Fully coordinate all aspects of the works with themselves, the structure, architecture and systems, equipment & services installed by others.
8. All redundant materials to be disposed of by an approved contractor in accordance with WEEE regulations.
9. Provide a complete system of labelling, indexing, colour coding and notices to clearly identify each item of equipment, its location and function as well as providing warning of hazard and danger and identifying procedures for safe operation and emergency action.
10. The positioning of all trunkings, conduits, cables and wiring accessories etc. shall be coordinated and agreed with the architect prior to installation.

T1	Tender	Mar 2023
REV	AMENDMENT	DATE

**waterfox**  
consulting engineers  
t: 01753 290590  
w: www.waterfox.co  
e: hello@waterfox.co  
a: First floor,  
rafts court, brocas street,  
ston, berkshire, s14 6rf

CLIENT

Mike Hawkins

PROJECT

RIO HOUSE  
HIGH STREET  
RIPLEY  
SURREY

DRAWING TITLE

POWER & ANCILLARY  
SERVICES

GROUND FLOOR

STATUS

TENDER

DATE

JANUARY 2023

SCALE

1:50 @ A1

DISCIPLINE

ELECTRICAL SERVICES

DRAWING No.

REVISION

1436 E 100

T1

- LEGEND**
- ① Circular luminaire, type as schedule
  - Downlight/spot light, type as schedule
  - Adjustable downlight/spot light, type as schedule
  - ⊥ Luminaire wall mounted
  - ⊥ Luminaire track mounted
  - Lighting track
  - E/e Suffix denotes integral emergency lighting conversion pack
  - ⌞ Light switch, 'n' denotes number of gangs, ways and types determined from switchline types
  - Ⓜ Flex outlet plate for connection of lighting by others
  - Lighting switch line, n denotes type; 2 = 2 way, X = Intermediate, D = dimmer
  - Ⓜ Domestic mains/battery linked smoke alarm
  - Ⓜ Domestic mains/battery linked heat alarm

LUMINAIRE SCHEDULE	
A	Pendant set
B	Single circuit plug in lighting track
B1	Track mounted adjustable spotlight
C	Circular ceiling luminaire
D	Decorative wall light
F	Mirror light

**Note:**  
The catalogue numbers noted are indicative of the range and type of luminaire required only. All luminaire selections are subject to confirmation and/or approval of the architect.

**DO NOT SCALE THIS DRAWING.**

Copyright of this drawing and all associated Waterfox information remains vested in Waterfox Consultancy Ltd. Licence to use, reproduce and issue is not permitted by any third party.

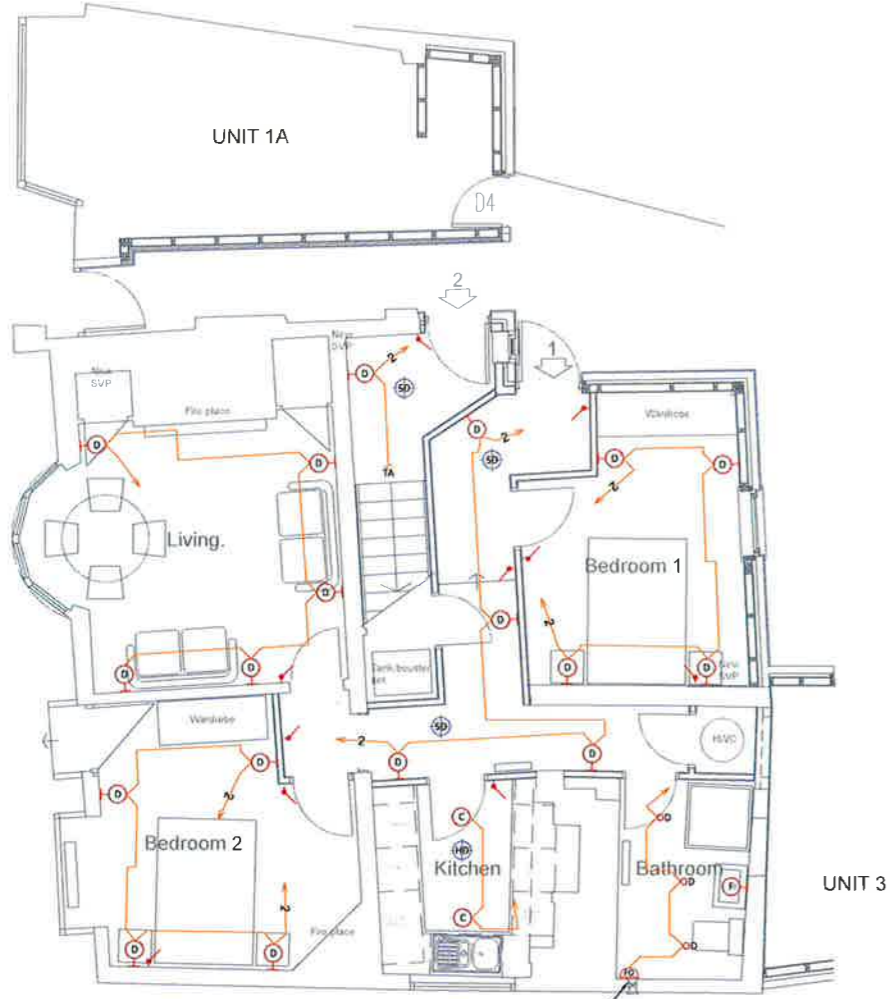
This drawing is to be read in conjunction with associated drawings and specifications.

This drawing together with associated drawings have been prepared to indicate the standard and performance of installation only and are not intended as a definitive design. They also show possible routes of services but it is stressed that these routes have not been surveyed in detail and are purely indicative of how the specification might possibly be interpreted.

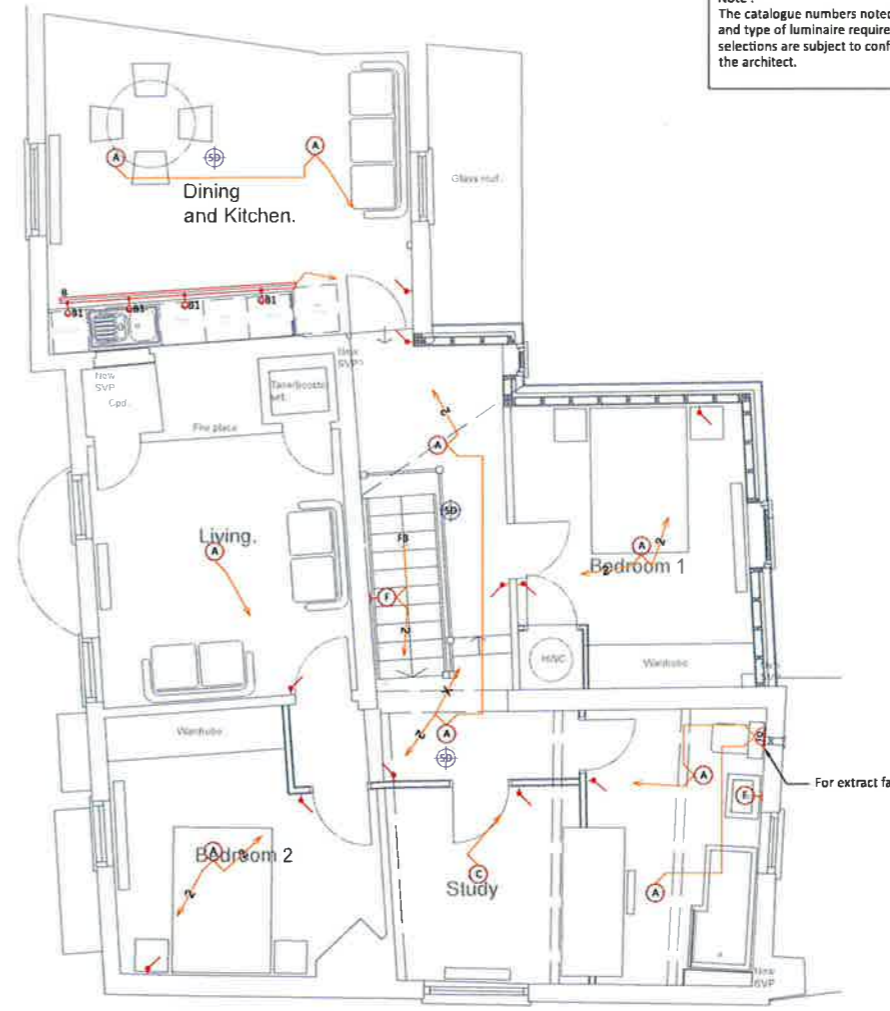
**BASE DRAWING**

**NOTES**

- This drawing shall be read in conjunction with all other mechanical, electrical, public health, architectural and structural drawings and specifications for this project.
- The works comprise design, manufacturing, factory testing, supply, delivering to site, manoeuvring into position, erection, connecting up, testing, commissioning, performance testing and handing over in working order the complete electrical installation.
- Include all items of either a temporary or permanent nature which may or may not be detailed or shown on the drawings but which are by implication associated with the works or by generally accepted standards of good practice necessary and/or essential to render the installation complete and safe in operation.
- Ensure the completed installation meets the specified and/or implied performance for the installation.
- Carry out the works and complete the works in every respect to the reasonable satisfaction of the engineer and in conformity with the reasonable directions and requirements of the Engineer.
- The works shall be carried out in accordance with the 18th edition of the IEE wiring regulations BS7671 including amendments 1 & 2 (2022) and in accordance with all other relevant British Standards, codes of practice etc.
- Fully coordinate all aspects of the works with themselves, the structure, architecture and systems, equipment & services installed by others.
- All redundant materials to be disposed of by an approved contractor in accordance with WEEE regulations.
- Provide a complete system of labelling, indexing, colour coding and notices to clearly identify each item of equipment, its location and function as well as providing warning of hazard and danger and identifying procedures for safe operation and emergency action.
- The positioning of all trunkings, conduits, cables and wiring accessories etc. shall be coordinated and agreed with the architect prior to installation.



Ground floor.



First floor.

T1	Tender	Mar 2023
REV	AMENDMENT	DATE

**waterfox**  
consulting engineers

t: 01753 290590  
w: www.waterfox.co  
e: hello@waterfox.co

a: first floor, rafts court, brasas street, eton, berkshire, s44 6rf

**CLIENT**  
Mike Hawkins

**PROJECT**  
RIO HOUSE  
HIGH STREET  
RIPLEY  
SURREY

**DRAWING TITLE**  
LIGHTING & FIRE ALARM SERVICES

**GROUND FLOOR**

**STATUS**  
TENDER

**DATE** JANUARY 2023 **SCALE** 1:50 @ A1

**DISCIPLINE** ELECTRICAL SERVICES

**DRAWING No.** 1436 E 200 **REVISION** T1

DO NOT SCALE THIS DRAWING.

Copyright of this drawing and all associated Waterfox information remains vested in Waterfox Consultancy Ltd. Licence to use, reproduce and issue is not permitted by any third party.

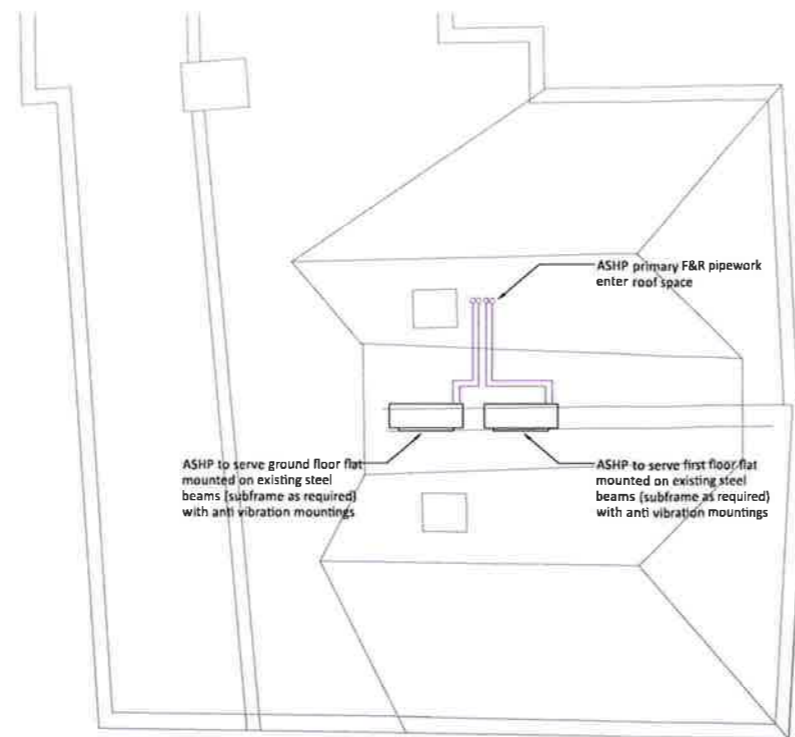
This drawing is to be read in conjunction with associated drawings and specifications.

This drawing together with associated drawings have been prepared to indicate the standard and performance of installation only and are not intended as a definitive design. They also show possible routes of services but it is stressed that these routes have not been surveyed in detail and are purely indicative of how the specification might possibly be interpreted.

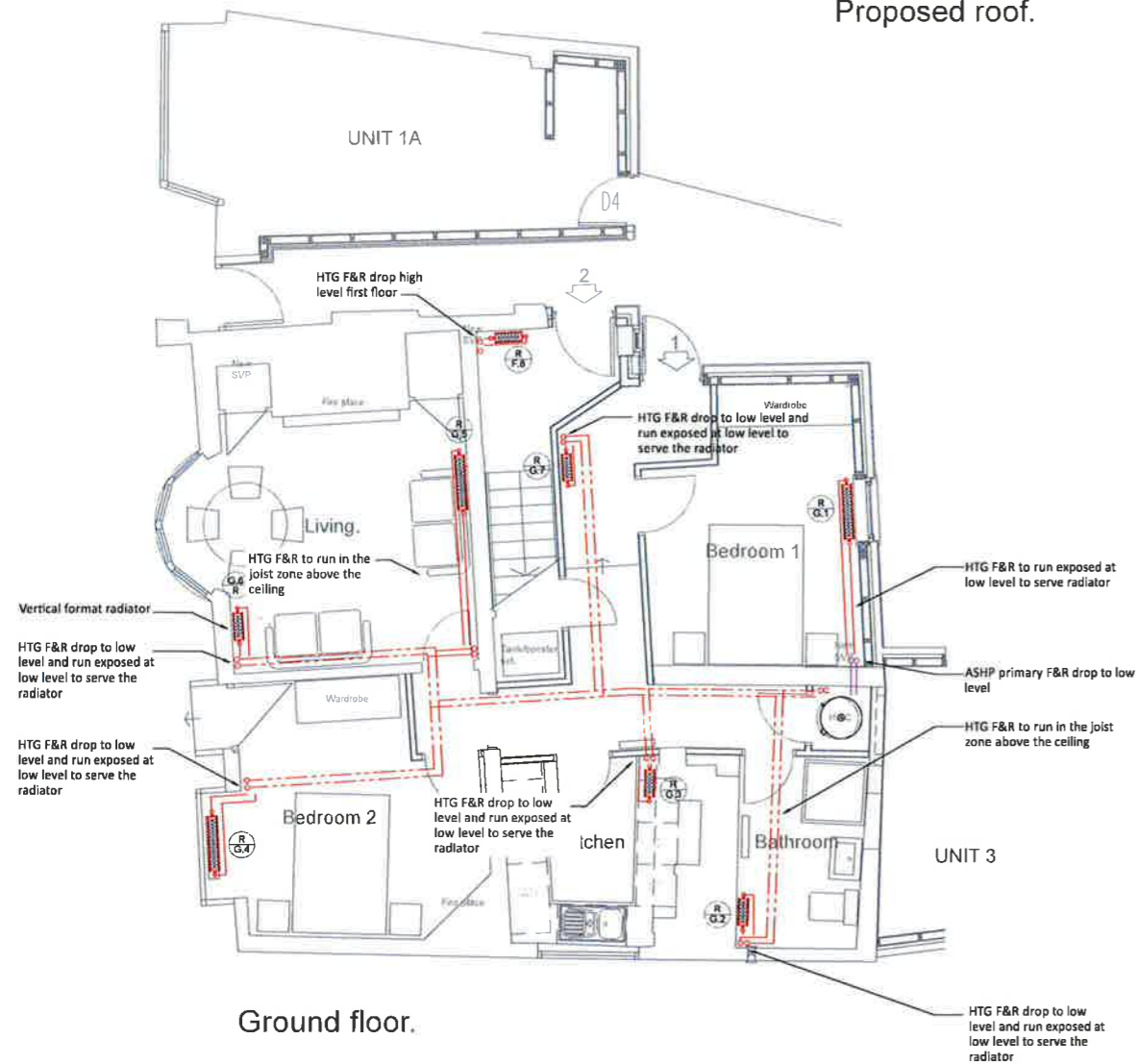
BASE DRAWING

LEGEND

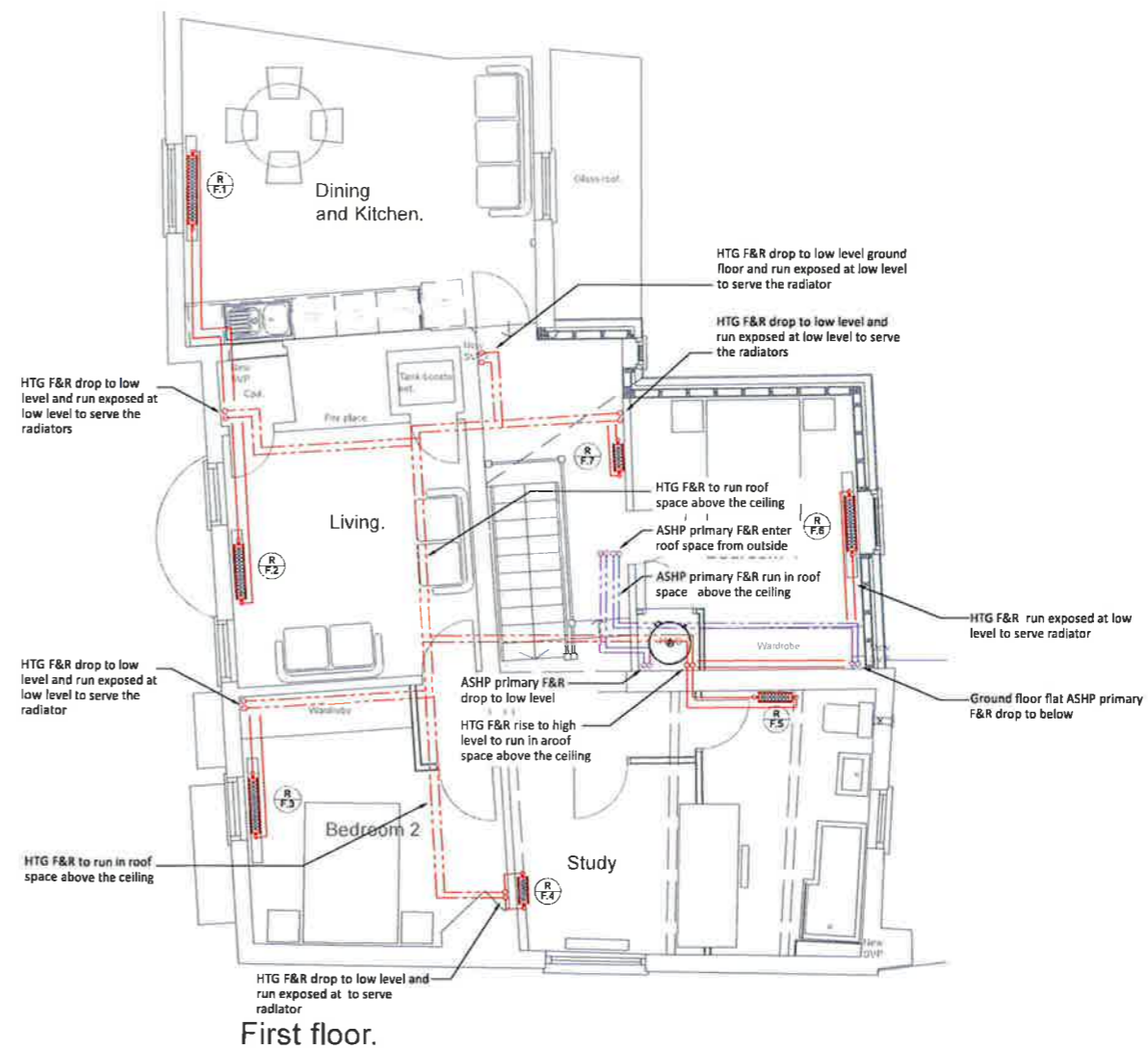
- Pipework at low level
- Pipework within floor void
- Pipework at high level
- Pipework at high level in ceiling void
- Underfloor heating zone boundary
- Electric underfloor heating mat zone boundary
- Wall mounted room thermostat
- Underfloor heating manifold reference
- Radiator reference
- Trench heater reference
- Electric heater reference
- Electric panel heater
- Towel rail
- UFH manifold
- HTG Heating
- F Flow
- R Return



Proposed roof.



Ground floor.



First floor.

T1	Tender	Mar 2023
REV	AMENDMENT	DATE

**waterfox**  
consulting engineers

t: 01753 280590  
w: www.waterfox.co  
e: hello@waterfox.co

a: First floor, brocas street, aton, berkshire, UK G11

CLIENT

Mike Hawkins

PROJECT

RIO HOUSE  
HIGH STREET  
RIPLEY  
SURREY

DRAWING TITLE

HEATING SERVICES

STATUS

TENDER

DATE

JANUARY 2023

SCALE

1:50 @ A1

DISCIPLINE

MECHANICAL SERVICES

DRAWING No.

REVISION

1436 M 100

T1

DO NOT SCALE THIS DRAWING.

Copyright of this drawing and all associated Waterfox information remains vested in Waterfox Consultancy Ltd. Licence to use, reproduce and issue is not permitted by any third party.

This drawing is to be read in conjunction with associated drawings and specifications.

This drawing together with associated drawings have been prepared to indicate the standard and performance of installation only and are not intended as a definitive design. They also show possible routes of services but it is stressed that these routes have not been surveyed in detail and are purely indicative of how the specification might possibly be interpreted.

BASE DRAWING

NOTES

1. The positioning of all pipes, ducts, radiators, grilles, vents, thermostats & appliances etc. shall be coordinated and agreed with the architect prior to installation.

LEGEND

- Pipework at low level
- - - Pipework within floor void
- · - · - Pipework at high level
- · - · - Pipework at high level in ceiling void
- MWS pipework
- HWS flow pipework
- HWS return pipework
- BCWS pipework
- Outlet/appliance connection
- MWS Mains water service
- BCWS Boosted mains water service
- HWS Hot water service
- F Flow
- R Return

T1	Tender	Mar 2023
REV	AMENDMENT	DATE

**waterfox** consulting engineers  
 t: 01753 290590  
 w: www.waterfox.co  
 e: hello@waterfox.co  
 a: first floor, rafts court, brocas street, elton, berkshire, SL4 6JF

CLIENT

Mike Hawkins

PROJECT

RIO HOUSE  
 HIGH STREET  
 RIPLEY  
 SURREY

DRAWING TITLE

PIPEWORK SERVICES

STATUS

TENDER

DATE	SCALE
------	-------

JANUARY 2023 1:50 @ A1

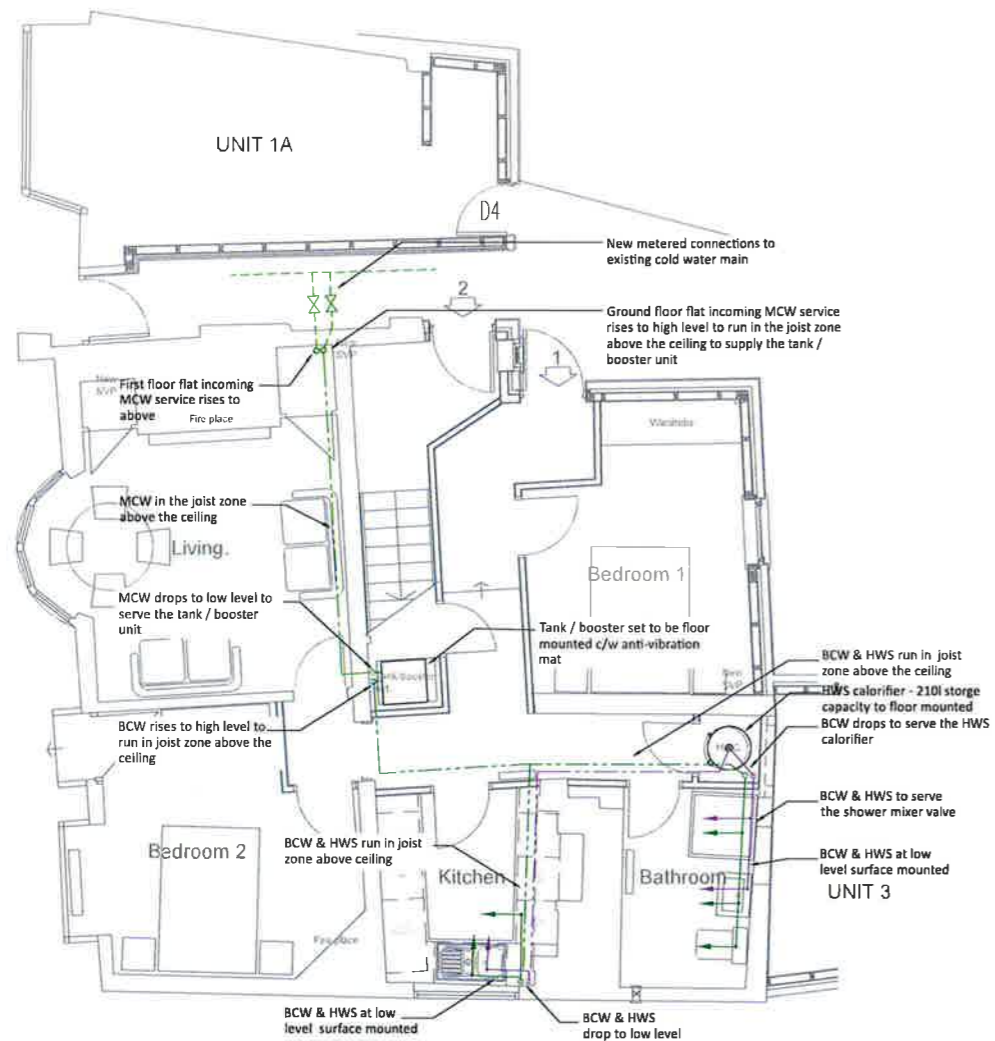
DISCIPLINE

MECHANICAL SERVICES

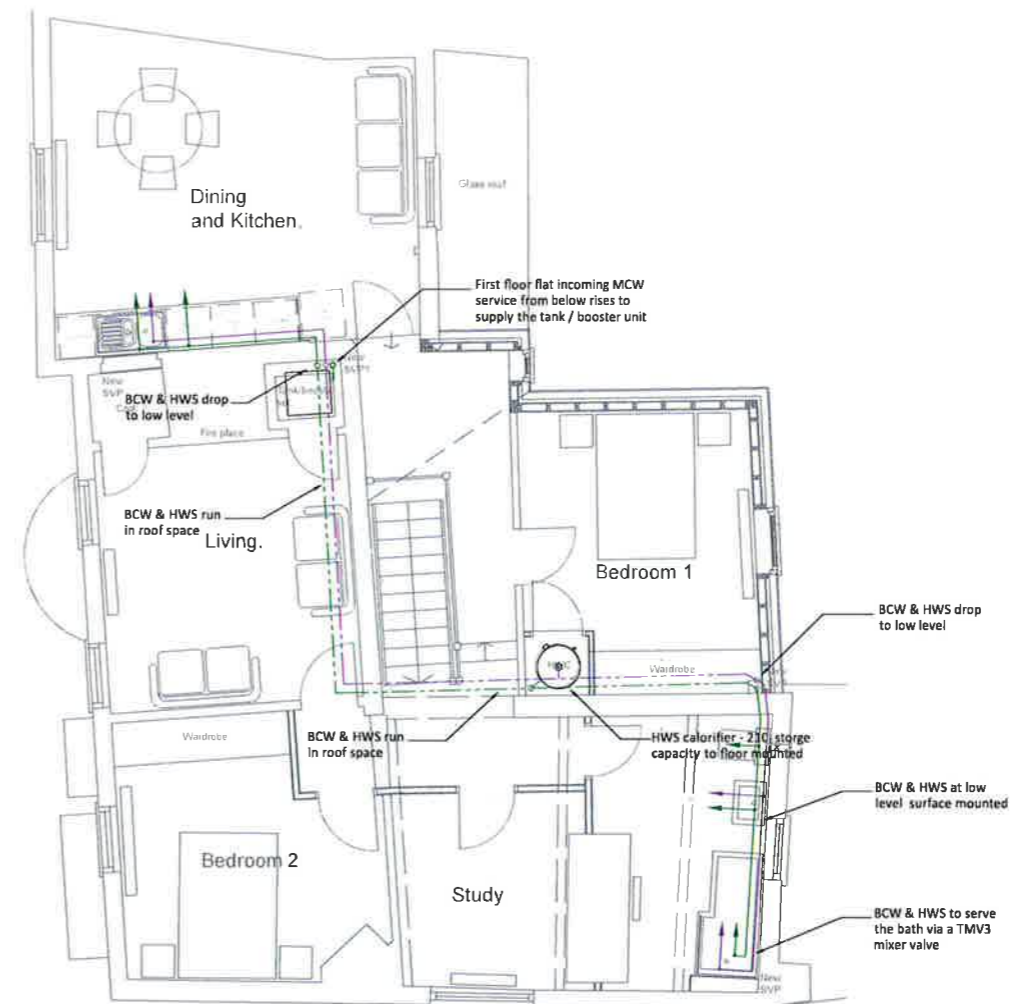
DRAWING NO.	REVISION
-------------	----------

1436 M 200

T1



Ground floor.



First floor.

DO NOT SCALE THIS DRAWING.

Copyright of this drawing and all associated Waterfox information remains vested in Waterfox Consultancy Ltd. Licence to use, reproduce and issue is not permitted by any third party.

This drawing is to be read in conjunction with associated drawings and specifications.

This drawing together with associated drawings have been prepared to indicate the standard and performance of installation only and are not intended as a definitive design. They also show possible routes of services but it is stressed that these routes have not been surveyed in detail and are purely indicative of how the specification might possibly be interpreted.

BASE DRAWING

NOTES

1. The positioning of all pipes, ducts, radiators, grilles, vents, thermostats & appliances etc. shall be coordinated and agreed with the architect prior to installation.

LEGEND

- Pipework at low level
  - - - Pipework within floor
  - - - Pipework at high level
  - - - Pipework within ceiling void
  - Pan connector
  - Trapped waste
  - Soil stack/SVP
  - Floor gully/waste
- 
- SVP Soil vent pipe
  - SS Stub stack
  - AAV Air admittance valve
  - WHB Wash hand basin
  - CE Cleaning eye
  - SHR Shower
  - WM Washing machine
  - DW Dishwasher
  - WC Toilet

T1	Tender	Mar 2023
REV	AMENDMENT	DATE

**waterfox** consulting engineers  
 t: 01753 290590  
 w: www.waterfox.co  
 e: hello@waterfox.co  
 a: first floor, crafts court, brocas street, elton, berkshire, s14 6rf

CLIENT

Mike Hawkins

PROJECT

RIO HOUSE  
HIGH STREET  
RIPLEY  
SURREY

DRAWING TITLE

ABOVE GROUND DRAINAGE

STATUS

TENDER

DATE

JANUARY 2023

SCALE

1:50 @ A1

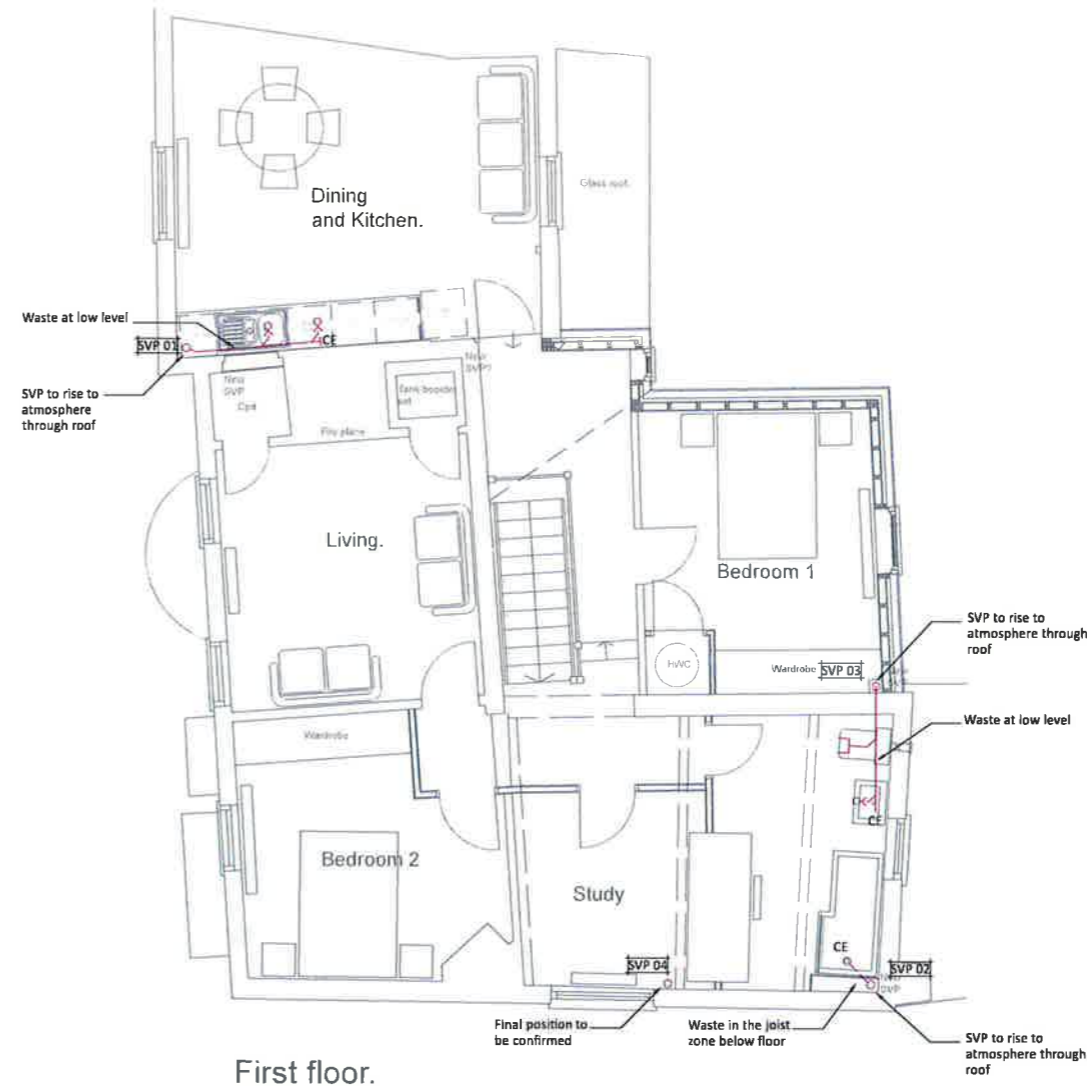
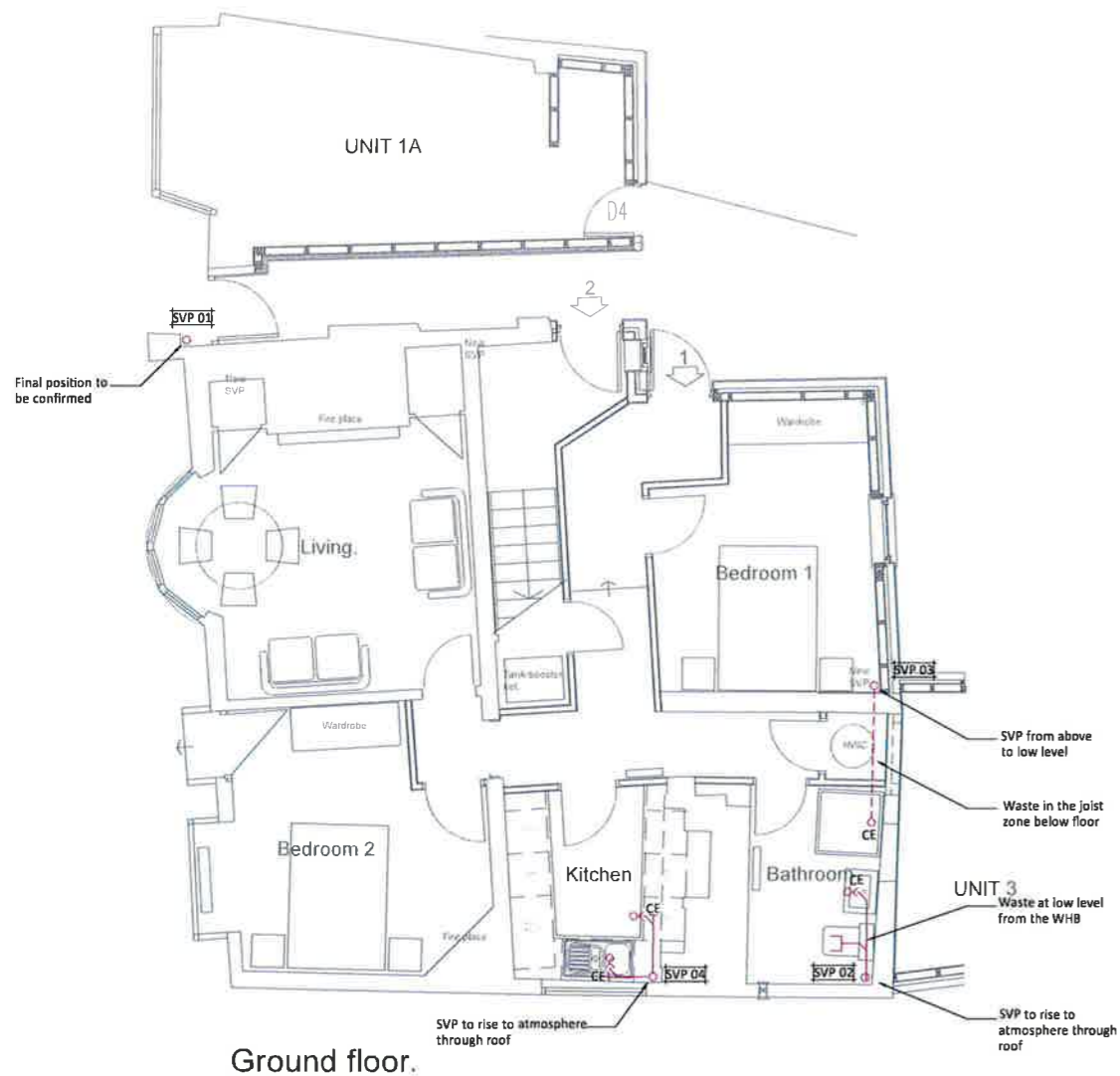
DISCIPLINE

MECHANICAL SERVICES

DRAWING No. REVISION

1436 M 300

T1



DO NOT SCALE THIS DRAWING.

Copyright of this drawing and all associated Waterfox information remains vested in Waterfox Consultancy Ltd. Licence to use, reproduce and issue is not permitted by any third party.

This drawing is to be read in conjunction with associated drawings and specifications.

This drawing together with associated drawings have been prepared to indicate the standard and performance of installation only and are not intended as a definitive design. They also show possible routes of services but it is stressed that these routes have not been surveyed in detail and are purely indicative of how the specification might possibly be interpreted.

BASE DRAWING

NOTES

1. The positioning of all pipes, ducts, radiators, grilles, vents, thermostats & appliances etc. shall be coordinated and agreed with the architect prior to installation.

LEGEND

- Refrigerant flow & return pipework within ceiling void
- EF Extract fan reference
- EG Extract grille reference
- TG Transfer grille reference
- EGT Extract grille/fan
- SG Supply grille
- ED Extract duct
- SD Supply duct
- EDR Extract duct riser
- SDR Supply duct riser
- TG Transfer grille
- VCD Volume control damper
- Direction of air flow
- UCD → Air flow via undercut door

T1	Tender	Mar 2023
REV	AMENDMENT	DATE

**waterfox**  
consulting engineers

T: 01753 290590  
W: www.waterfox.co.uk  
E: hello@waterfox.co.uk

1st floor, Rafts Court, Brocas Street, Milton, Berkshire, SL4 6JF

CLIENT

Mike Hawkins

PROJECT

RIO HOUSE  
HIGH STREET  
RIPLEY  
SURREY

DRAWING TITLE

VENTILATION SERVICES

GROUND FLOOR

STATUS

TENDER

DATE

JANUARY 2023

DISCIPLINE

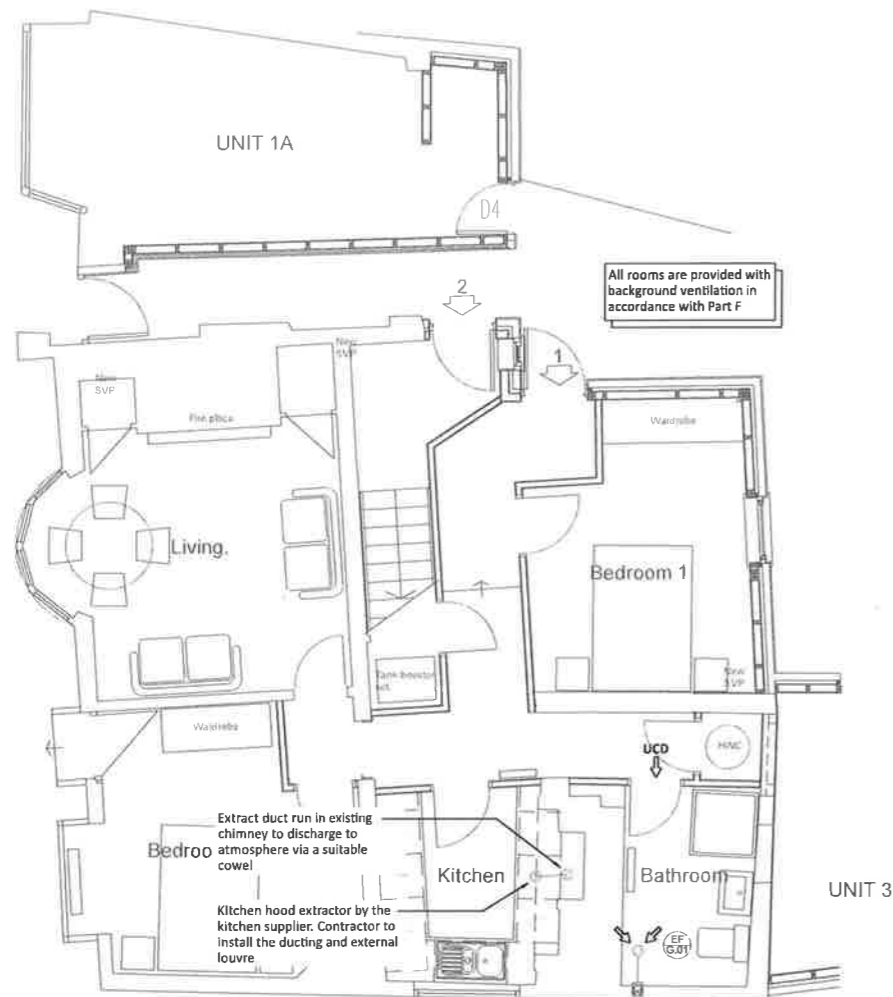
MECHANICAL SERVICES

DRAWING No.

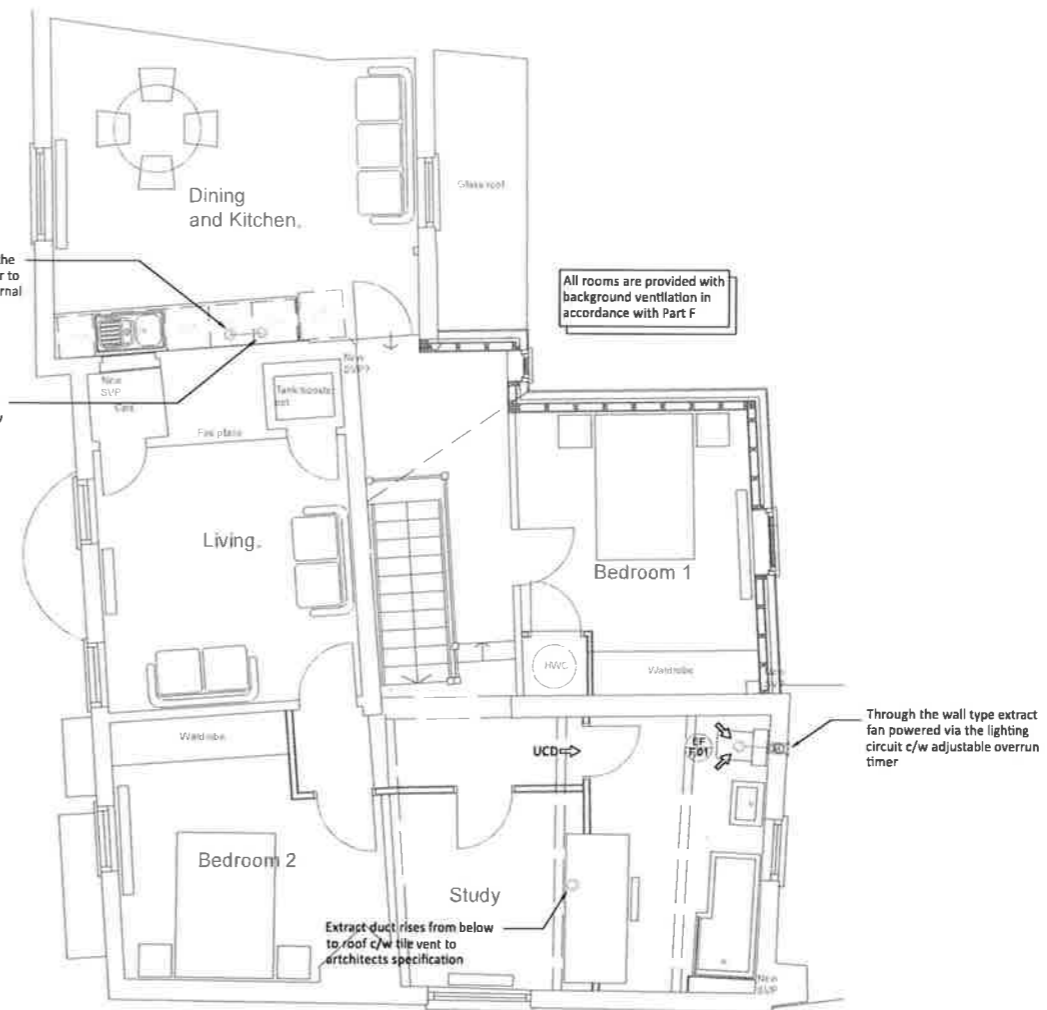
REVISION

1436 M 400

T1



Ground floor.



First floor.