

REDHORN CLOSE, POOLE

INFILL SITES

House Type Study



EXISTING HOUSE TYPE STUDY

Existing Houses

- Redhorn Close
- Fitzworth Avenue
- Middlebere Crescent

Form of Existing

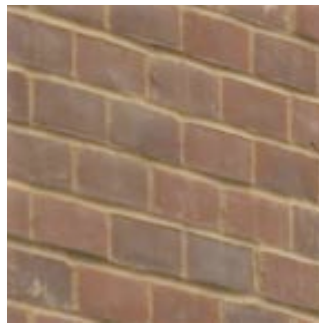
- Two Storey
- Semi-Detached
- Some Terraced with articulated gables
- Predominately gable ended roofing

Common Features

- Low level eaves meeting first floor windows
- Large asymmetrical windows
- Combined canopy above entrance with bin store
- Predominately on-street parking or shared spaces
- Occasional PV panel usage
- Use of Render/Tiling/Timber cladding between window's

Materials Palette

- Red and Buff brick
- Occasional brown and multi-red brick
- Concrete tile roofs
- White uPVC windows
- White rainwater goods, fascia, canopy and door frames.
- Occasional black rainwater good usage.



HOUSE TYPE STUDY

Contemporary House Precedent

- Goldsmith Street, Norwich - Mikhail Riches
- Daubeney Road, Hackney - Al - Jawad Pike
- Silchester Housing, London - Haworth Tompkins

Form

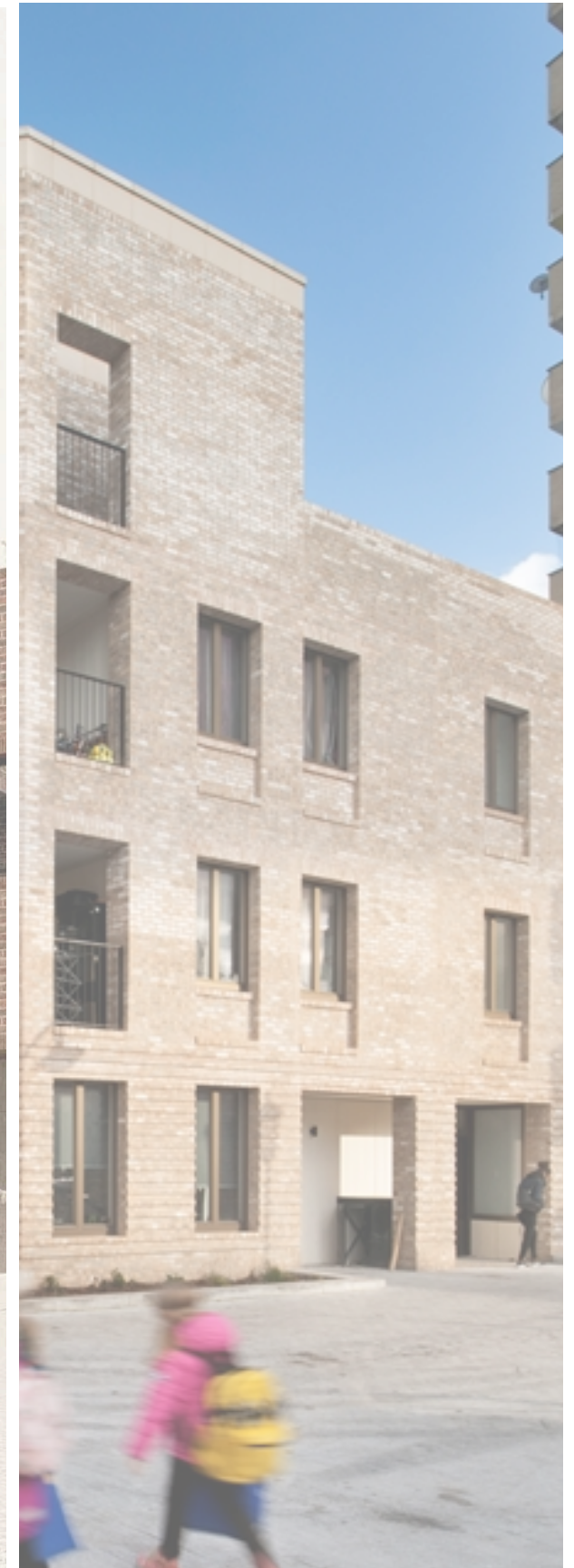
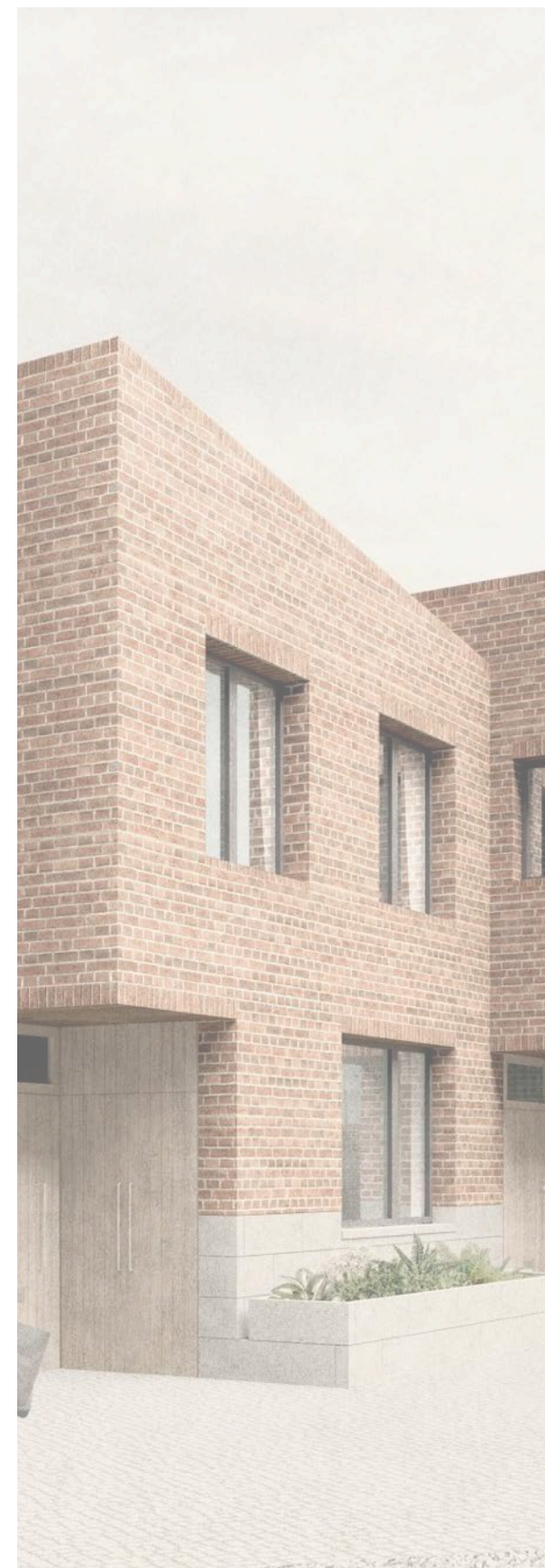
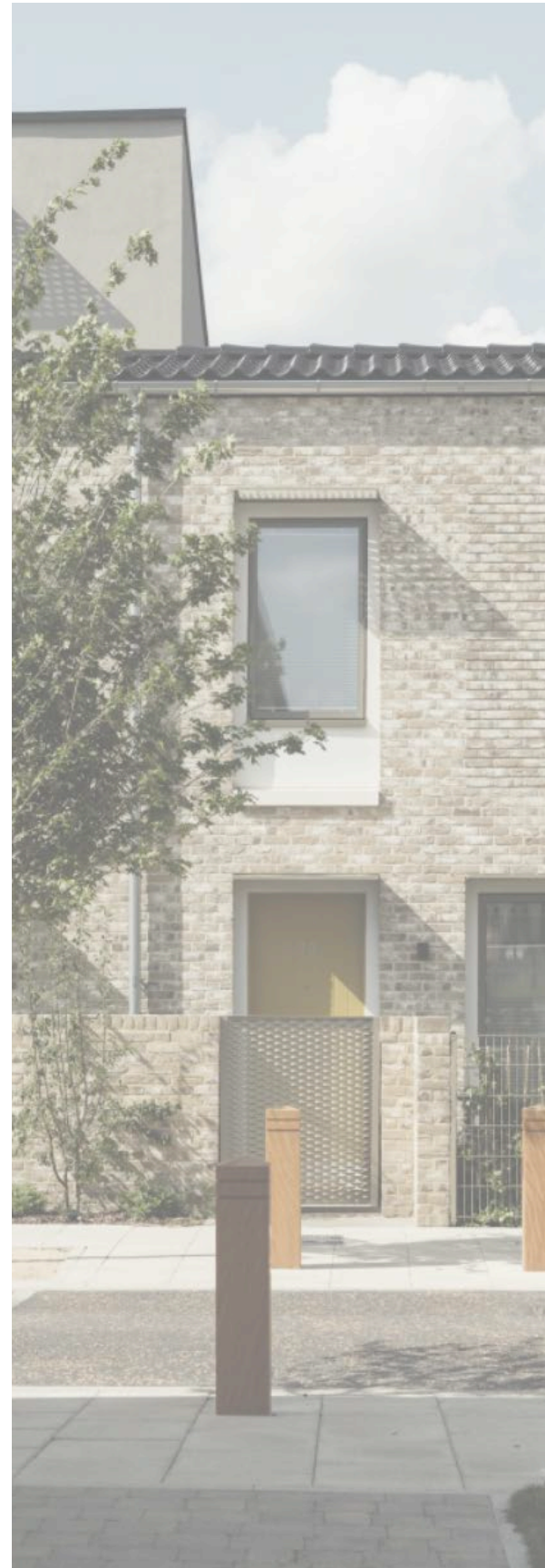
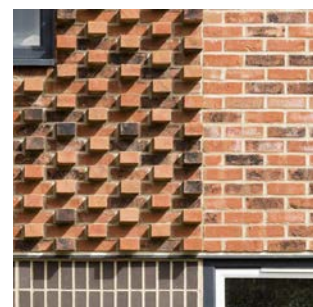
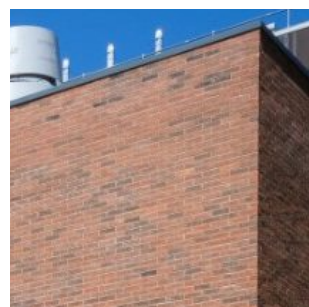
- Two storey + four storey
- Terraced
- Medium/low steep pitched roofs or flat roofs

Common Features

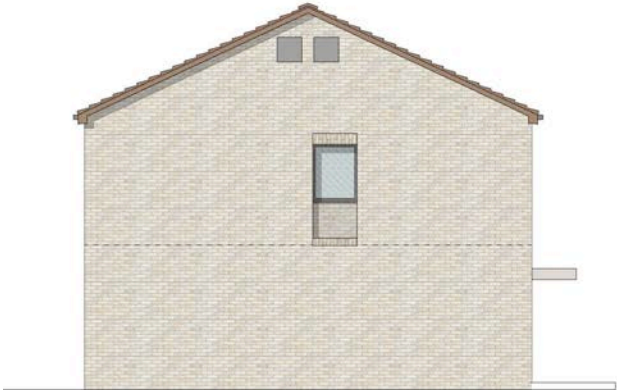
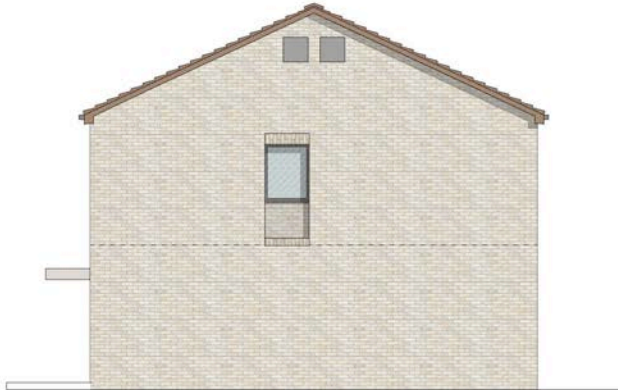
- Side facing gables
- Asymmetrical windows
- Recessed front doors with open porch with flat roof front door canopies
- Decorative protruding/recessed brick work
- Simple unfussy detailing

Materials Palette

- Red, Brown and Buff Brick
- Plain tiles
- Protruding brick details
- Grey aluminium windows and guttering.



PROPOSED HOUSE TYPE



Proposed House Type - 2B4P Semi-Detached

- Form**
- Two Storey
 - Semi-Detached
 - Gable ended
 - Medium pitched roof

- Common Features**
- Asymmetrical windows
 - Flat roof door canopy
 - Decorative brickwork (Protrusion/Recessed)
 - Simple unfussy detailing

- Materials Palette**
- Multi-Red or Multi-Red coloured brick.
 - Concrete tile roof
 - Grey uPVC windows
 - Matching grey rainwater goods, canopy and door frames.

Proposed House Type - 3B5P Semi-Detached

