

NOTES:
DO NOT SCALE DRAWING (for Construction):
 For Planning Purposes only, the drawing is to scale.
 InGrain Architecture Ltd own the copyright to this drawing.
 This drawing has been produced for the client for the project on the site shown. It was prepared for a purpose agreed with the client and will have a commensurate degree of accuracy. It is not a record "as built". This drawing is not intended for use by any other person or for any other purpose than that specified here. InGrain Architecture Limited accept no liability whatsoever for components that do not fit should the contractor fail in their duty to carry out the procedures above.
 Dimensions are for guidance only. During construction, the contractor is liable for checking all on site dimensions prior to ordering materials and components, for example steel beams and columns, timbers, windows & doors, staircases etc. InGrain Architecture Limited accept no liability whatsoever for components that do not fit should the contractor fail in their duty to carry out the procedures above.

REV.	DATE	DRN.	CD.	NOTES
1st	09.11.23	PW	CP	Discharge Condition No 6

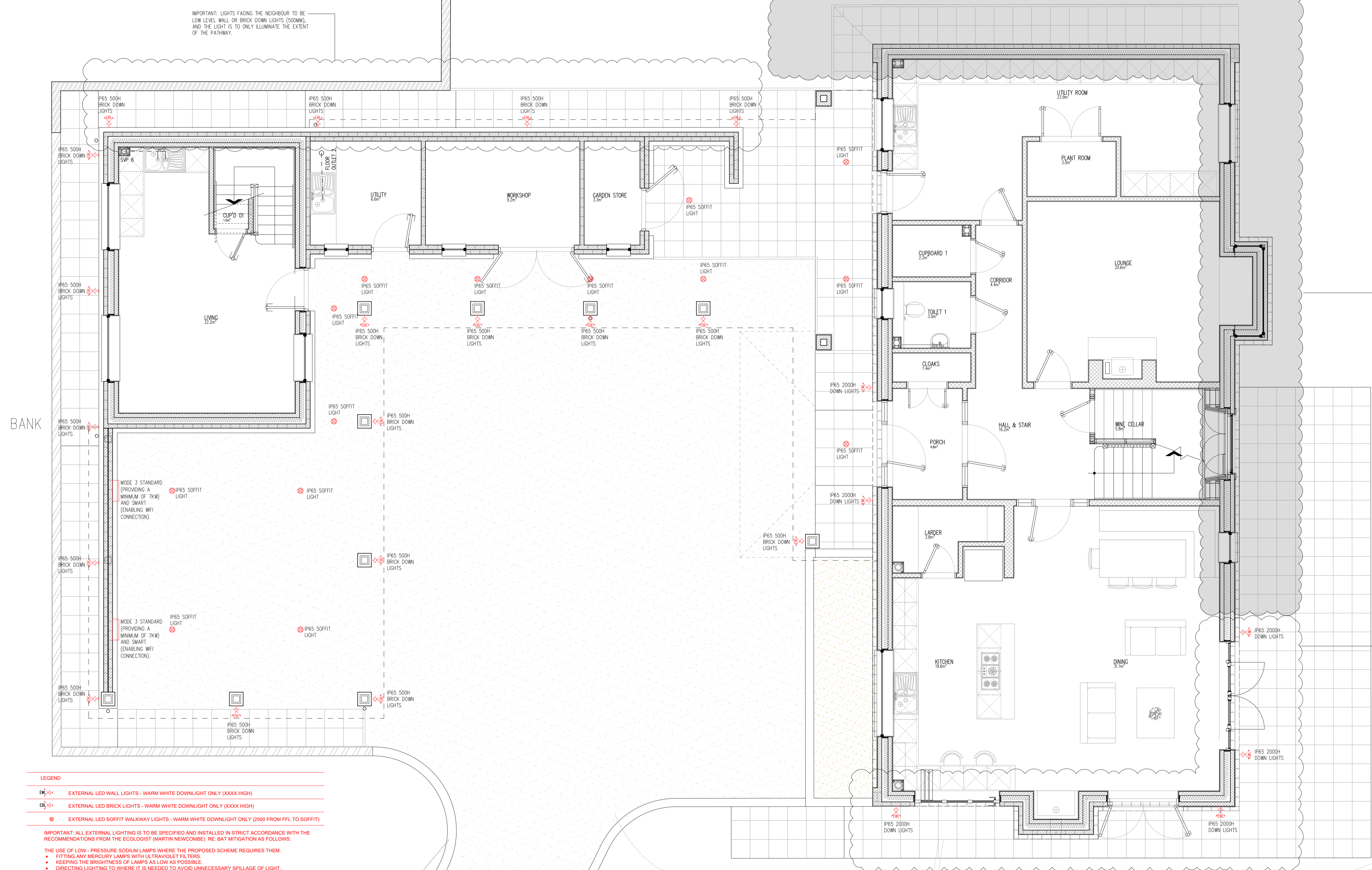
BANK

NEIGHBOURING OAST

IMPORTANT: LIGHTS FACING THE NEIGHBOUR TO BE LOW LEVEL WALL OR BRICK DOWN LIGHTS (500MM) AND THE LIGHT IS TO ONLY ILLUMINATE THE EXTENT OF THE PATHWAY.

IMPORTANT: EXTERNAL LIGHT EXCLUSION ZONE.

IMPORTANT: WALL DOWNLIGHTS AND LIGHT SPILL MUST BE LIMITED TO THE PATIO ONLY AND NOT BEYOND (I.E. ON TOP OF THE BANK). WHERE THE LIGHTS WILL BE MANUALLY CONTROLLED BY THE OCCUPANT FOR THEIR USE, THE LIGHTS WILL BE ON A VARIABLE LIGHTING SCHEME (VLR) WHICH WILL AUTOMATICALLY DIM TO 50% AT SUNSET (VARS) AND FULLY EXTINGUISH AT 00:30AM UNTIL 05:30AM.



BANK

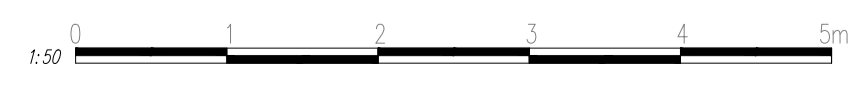
BANK

LEGEND

	EXTERNAL LED WALL LIGHTS - WARM WHITE DOWNLIGHT ONLY (XXXX HIGH)
	EXTERNAL LED BRICK LIGHTS - WARM WHITE DOWNLIGHT ONLY (XXXX HIGH)
	EXTERNAL LED SOFFIT WALKWAY LIGHTS - WARM WHITE DOWNLIGHT ONLY (2500 FROM FFL TO SOFFIT)

IMPORTANT: ALL EXTERNAL LIGHTING IS TO BE SPECIFIED AND INSTALLED IN STRICT ACCORDANCE WITH THE RECOMMENDATIONS FROM THE ECOLOGIST (MARTIN NEWCOMBE) RE: BAT MITIGATION AS FOLLOWS:
 THE USE OF LOW - PRESSURE SODIUM LAMPS WHERE THE PROPOSED SCHEME REQUIRES THEM.
 • FITTING ANY MERCURY LAMPS WITH ULTRAVIOLET FILTERS.
 • KEEPING THE BRIGHTNESS OF LAMPS AS LOW AS POSSIBLE.
 • DIRECTING LIGHTING TO WHERE IT IS NEEDED TO AVOID UNNECESSARY SPILLAGE OF LIGHT.
 • AVOIDING UPWARDLY - DIRECTED LIGHT.
 • LIMITING LIGHTING DURATIONS BY FITTING TIMERS TO ALL EXTERNAL LIGHTS.

- IN ADDITION, THE ECOLOGIST (MARTIN NEWCOMBE) HAS ADVISED THE FOLLOWING:
- ANY EXTERNAL LIGHTING ON THE SOUTHEAST (CLIFF) SIDE SHOULD BE ON VERY SHORT TIMERS TO AVOID THE CLIFF FACE AND LAND BELOW BECOMING ILLUMINATED TOO MUCH.
 - IN ANTICIPATION OF A POTENTIAL ROOST IN THE NEIGHBOURING BUILDING TO THE NORTH, THEN THE MINIMUM LIGHTING THAT CAN BE HAD SHOULD BE THERE, AND HOODED OR POSITIONED SO THAT THERE IS NO GLARE ONTO THE NEIGHBOURS.
 - LEDs SHOULD BE USED WHERE POSSIBLE.
 - ALL LIGHT SOURCES SHOULD FEATURE PEAK WAVE LENGTHS HIGHER THAN 550NM TO AVOID THE COMPONENT OF LIGHT MOST DISTURBING TO BATS.
 - NO LIGHT OUTPUT ABOVE 90°.



InGrain Architecture Limited
 Company Number: 12941911
 The Grain Store Studio, Brenley, Faversham, ME13 9LY, UK
 Email: Web: www.ingrainarchitecture.co.uk

Client:
 Canterbury Pilgrims Way, Harbledown CT2 9BJ

Project:
 Bigbury Cottage (Replacement Dwelling)

Drawing title:
 Proposed Lighting Plan

Scale: 1:50 @ A1	Drwn by: PW	Chkd by: CP	Date: 09.11.23
------------------	-------------	-------------	----------------

Drawing Status:
 Planning

Drawing Number: 22105-T-(00)-0200	Revision: 1st
---	-------------------------

This drawing is copyright