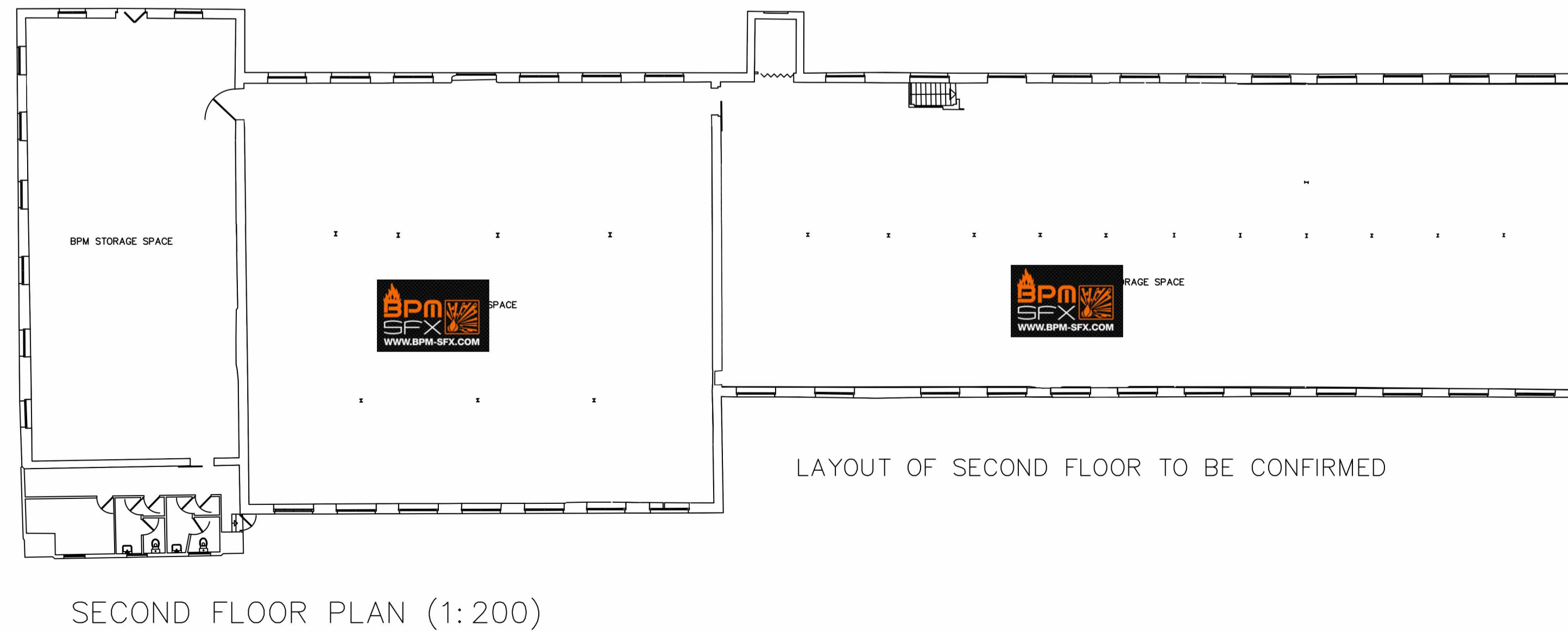
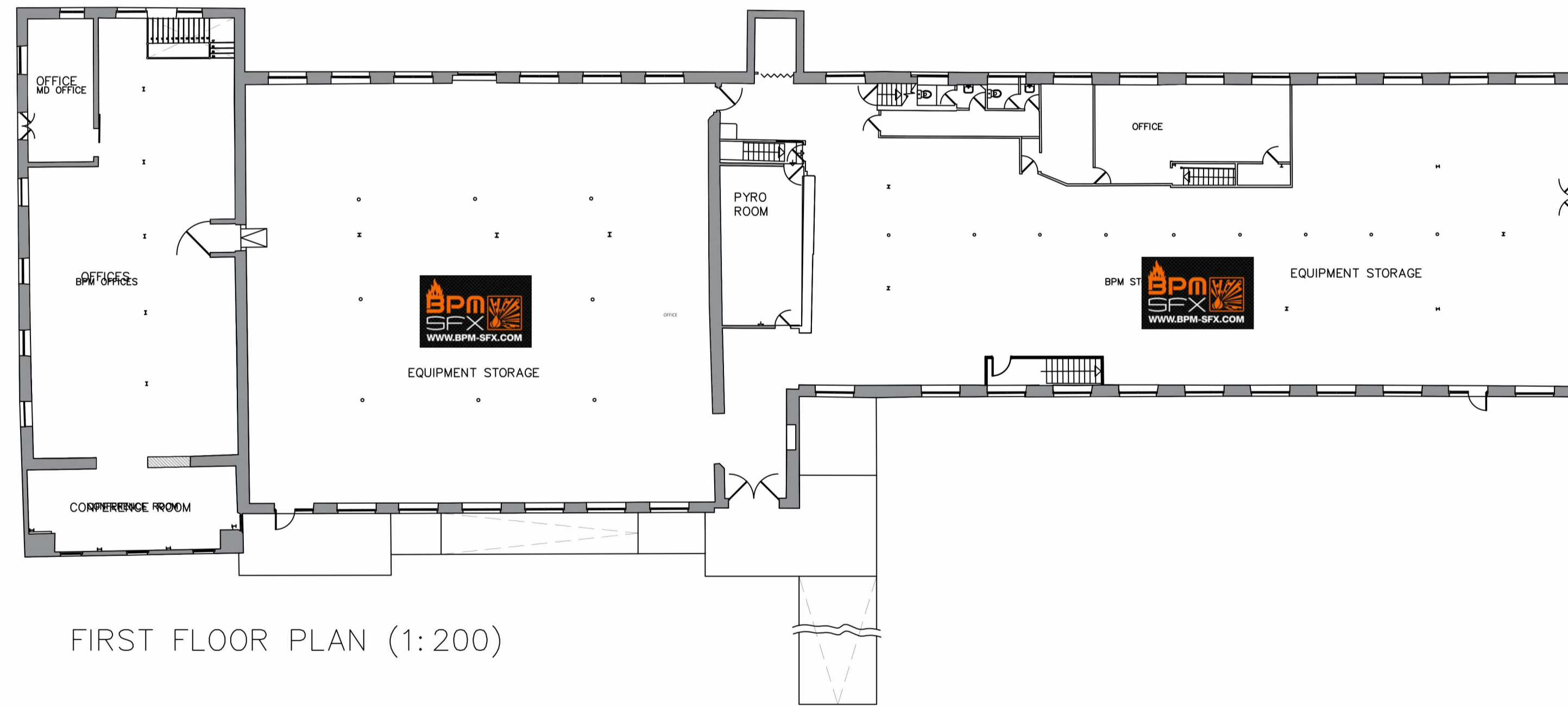
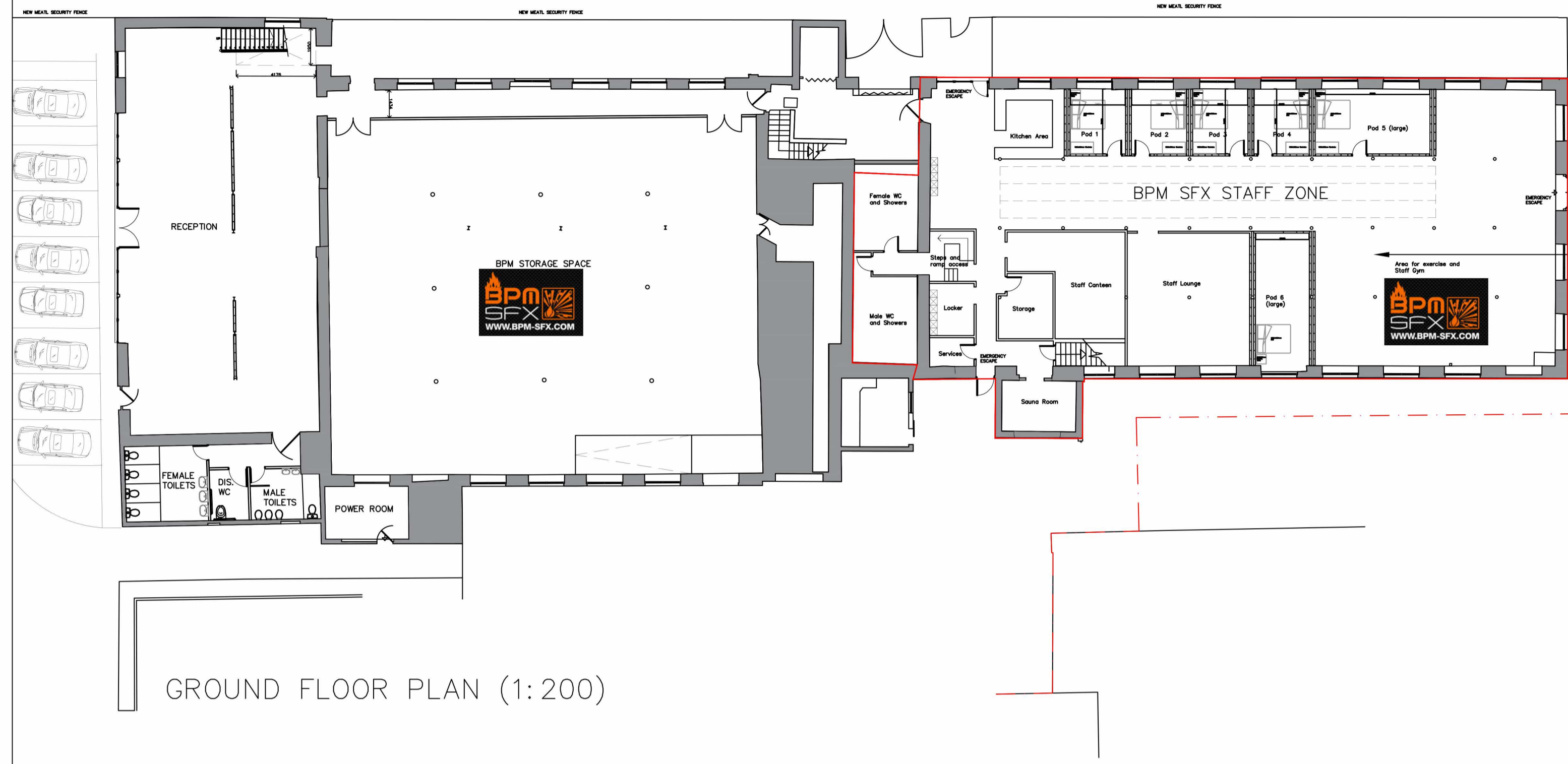
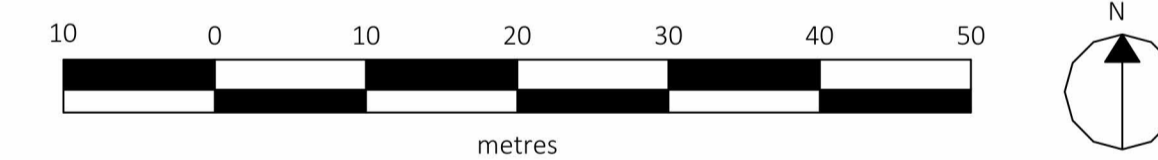
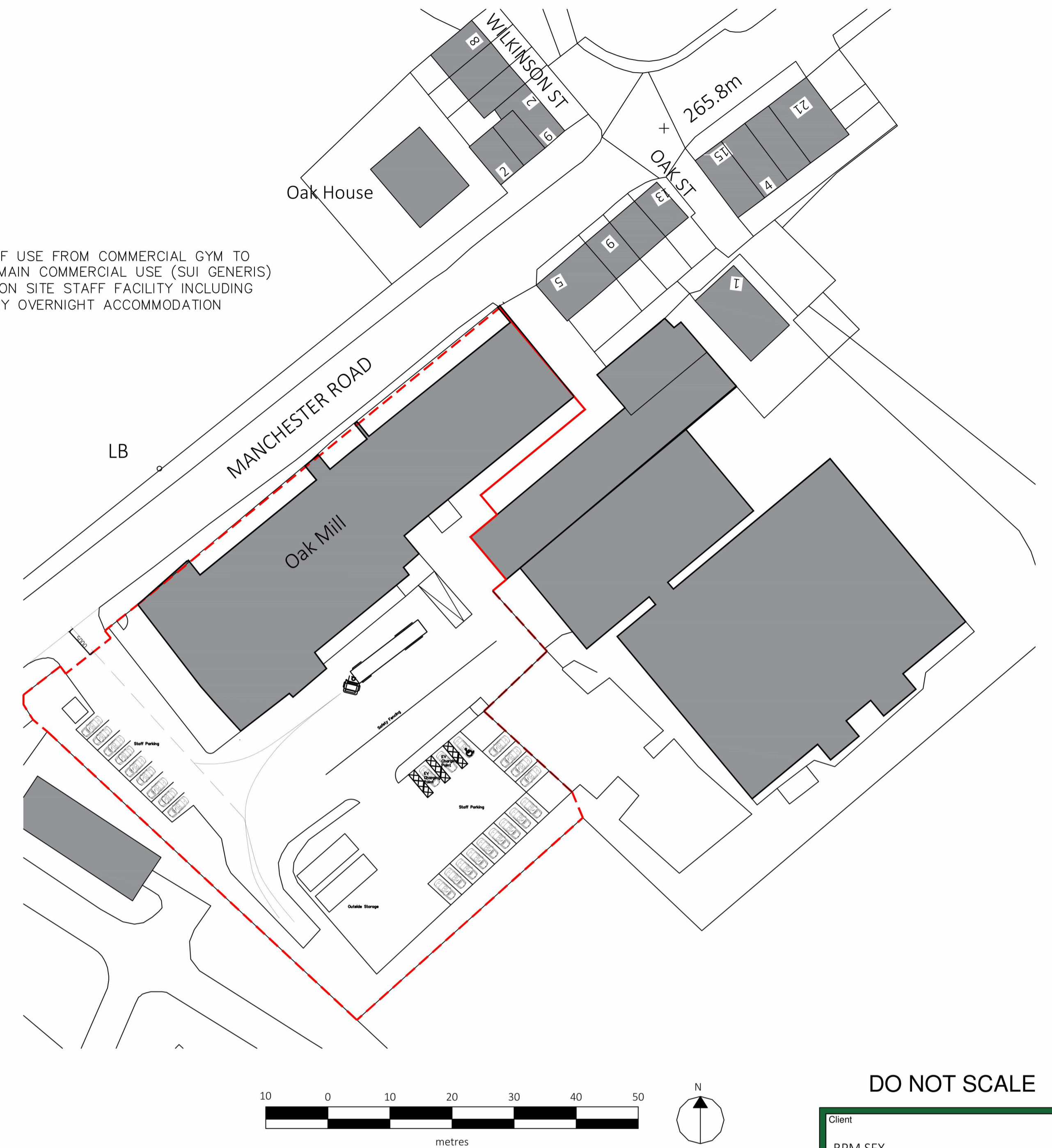


EXISTING



LAYOUT OF SECOND FLOOR TO BE CONFIRMED

CHANGE OF USE FROM COMMERCIAL GYM TO PART OF MAIN COMMERCIAL USE (SUI GENERIS) TO FORM ON SITE STAFF FACILITY INCLUDING TEMPORARY OVERNIGHT ACCOMMODATION



DO NOT SCALE

Client			
BPM SFX			
Project			
Change of use of Gym (Sui Generis) to commercial use (Sui Generis) including staff facilities & temporary overnight accommodation Oak Mill, Dunnockshaw, Burnley			
Job No.	Area	File Ref	
2023/21			
Title			
PROPOSED PLANS AND SITE PLAN			
2023/21-02			rev. A
Date	Drn.	Scale	Checked
14.03.23	B. E	AS NOTED	



Stacksteads, Bacup
Lancashire
OL13 8JS