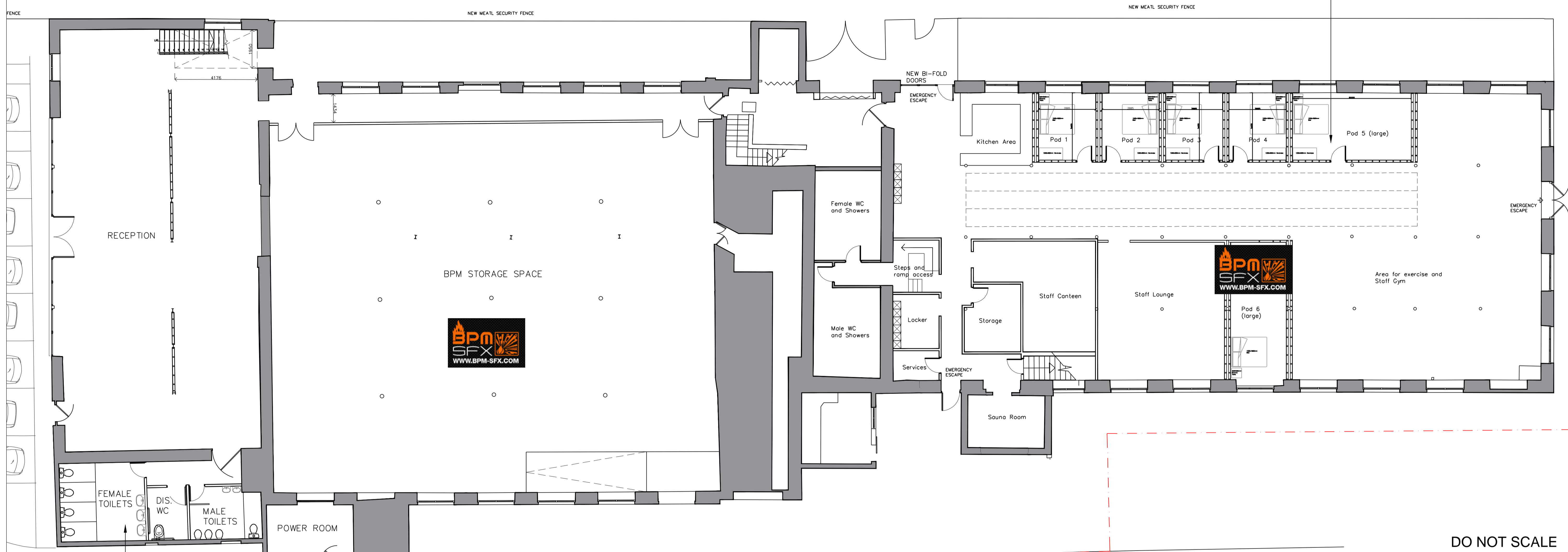


PROPOSED

APPLICATION RELATES TO CHANGE OF USE  
OF COMMERCIAL GYM, TO HOUSE STAFF  
FACILITIES INCLUDING TEMPORARY STAFF ACCOMMODATION



NEW CUSTOMER TOILETS WITH ALL DRAINAGE CONNECTED TO EXISTING

GROUND FLOOR PLAN (1:100)

DO NOT SCALE

Client			
BPM SFX			
Project			
Change of use of Gym (Sui Generis) to commercial use (Sui Generis) including staff facilities & temporary overnight accommodation Oak Mill, Dunnockshaw, Burnley			
Job No.	Area	File Ref	
2023/21			
Title			
Proposed Ground Floor Plan			
2023/21-05			Rev. A
Date	Drn.	Scale	Checked
14.03.23	B. E	AS NOTED	

**eds**  
edmondson  
design services

Stacksteads, Bacup  
Lancashire  
OL13 8JS