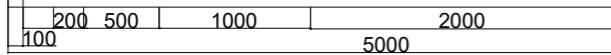


ALEX IMLACH DESIGN 02088779955

PROJECT: 135B, Riverview Road, Epsom KT19 OJR
 CLIENT : Mr R O'Sullivan
 TITLE : Proposed ground floor plan
 SCALE: 1:50 on A3 DWG NO: 682C/BR/510 REV: G
 Rev G - Velux removed
 SCALE BAR IN MM
 COPYRIGHT AID



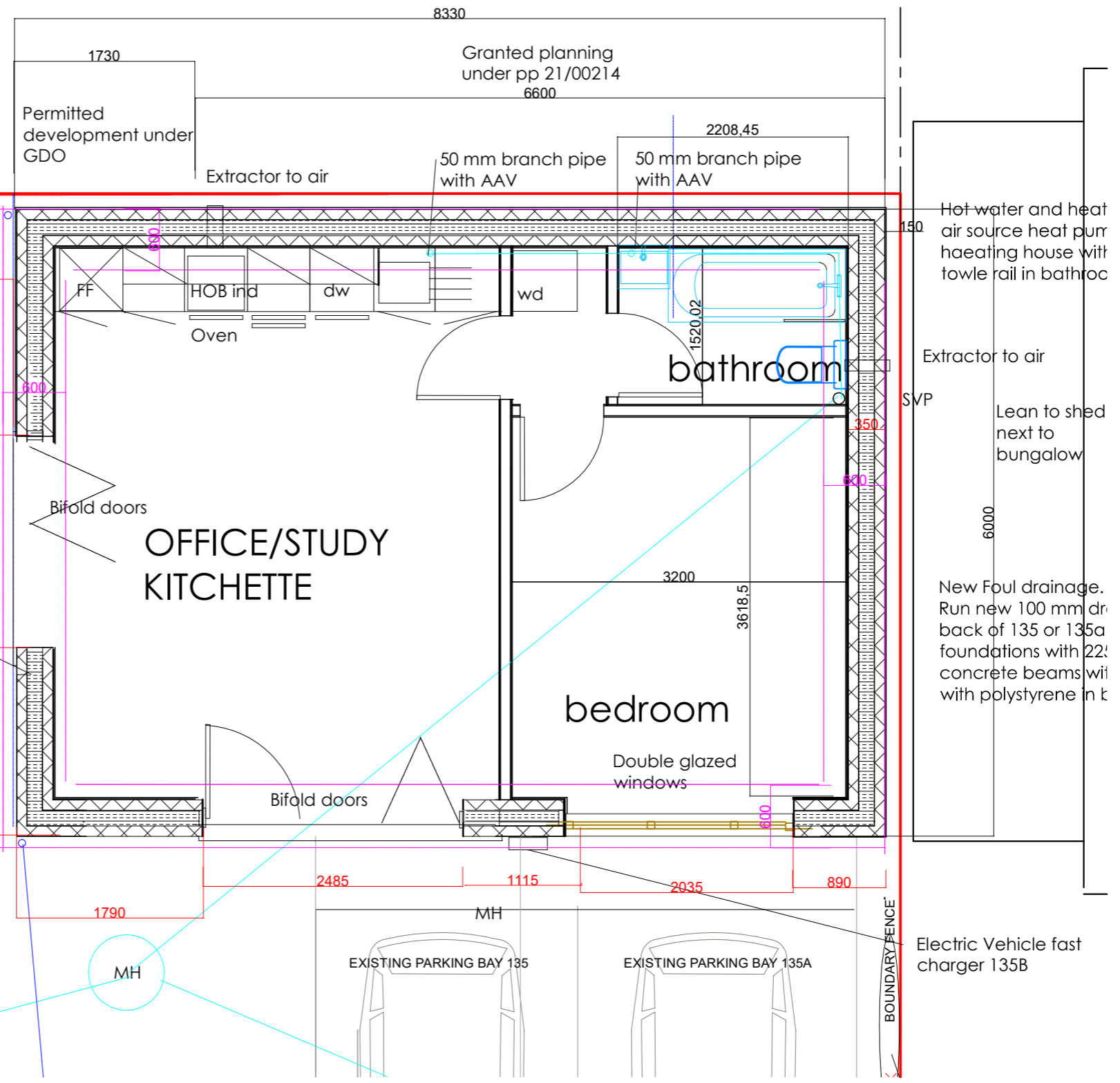
New rendered block cavity walls giving 0.16 U value, 150 mm fullfill Knauf 0.32 cavity batts, 100 mm thermalite shield with, 150 cavity. Note where render prevented by proximity of fence use a prefinished block such as Evacast Background block or remove fence and render entirely.

Wall construction -
 Allow 100 mm Thermalite shield external skin, 150 mm cavity with 150 full fill Knauf Drytherm 32 supported with cavity retaining stainless steel ties, inner skin 100 mm Thermalite shield aerated blocks. Ties to be 450 vertically and 900 horizontal staggered. At openings and near corners double up ties. Close cavities at top use slate, protect cavities during construction using board. Maintain a clear minimum 40 mm cavity between insulation and outer skin. Reinforce block work below and above openings using two courses brick for stainless steel. Allow vertical movement joint in blockskins 3m from corners, use propriety movement ties, and render beads leaving a 10 mm gap filled with silicone mastic., stagger the movement joints internal and externally. e 1:1:6 mix -cement, lime, sand. Use thermabate cavity closers around all openings. Allow cavity perpend weep holes over each lintel and over cavity tray.

External finish to be polymer-modified render to manufacturers details with fibreglass mesh where required, flat finish, use stainless steel beads all round and beside movement joints. The lower stop beads to stop above DPC. Note - Client to advise if render to be self coloured. Inside to be plasterboard on dabs. Use moisture resitannt boards around wet areas and cement boards around showers.

New Ground floor slab -
 150 mm well tamped hardcore, 50 mm sand cement blinding, 150 mm C25 concrete with light reinforcement Visqueen 2000 with well lapped joints and taken up and lapped to Dpc. 150 mm Polyinsicurate insulation eg Eco Versal with anti cold bridge 35 mm strip taken up around edge of new 70 mm sand cement screed. Allow for dpm between screed and insulation. Cover in 70 mm screed with underfloor heating pipes suitable for air sourced heat pump.

New extension foundations
 Excavate 1100 mm below ground level 600 mm wide fill to 400 mm below ground level with gen C concrete. Axial load



01.07

0