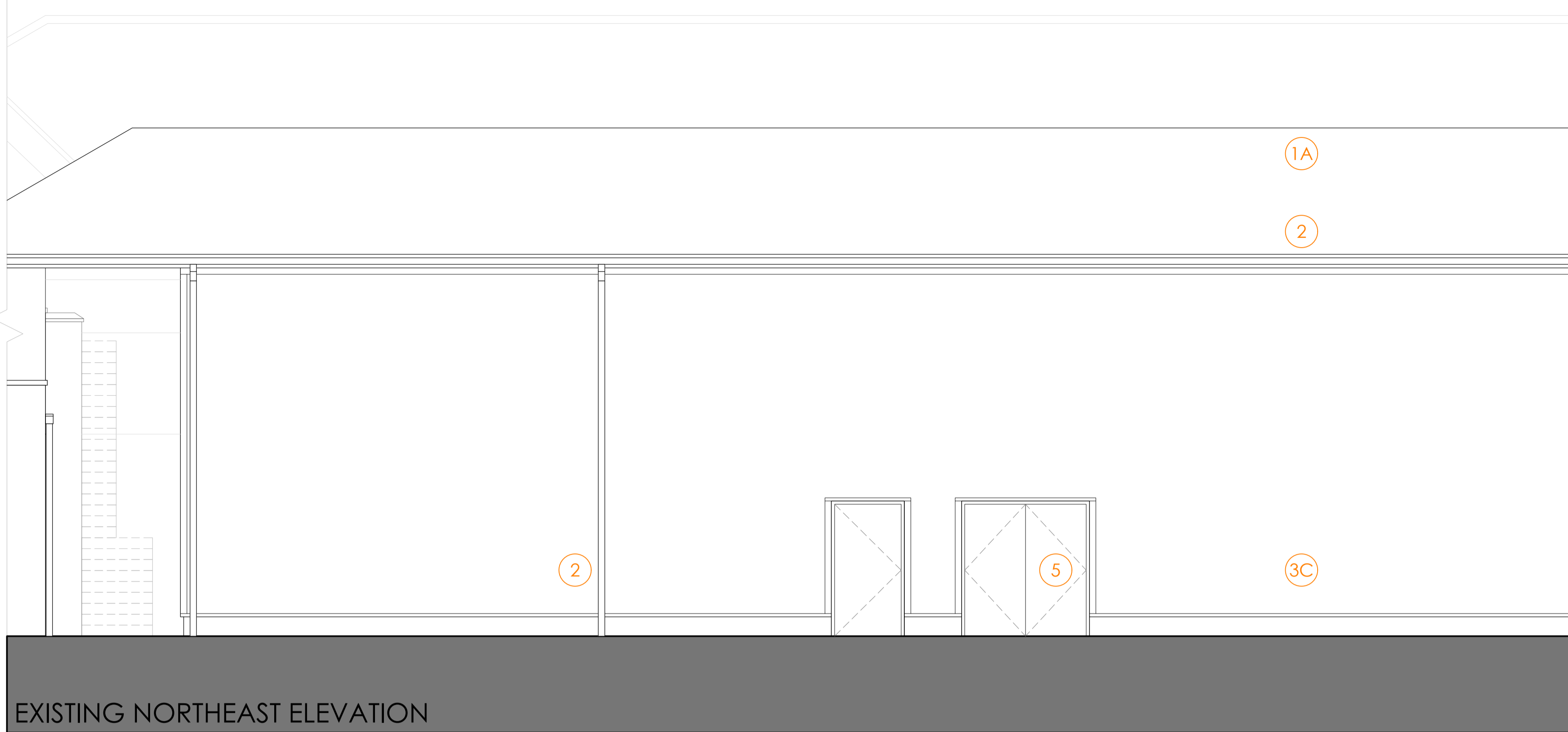


DO NOT SCALE OFF THIS DRAWING - ALL DIMENSIONS AND SETTING OUT TO BE VERIFIED ON SITE. IF IN DOUBT CONTACT THE ORIGINATOR FOR CLARIFICATION.  
 THIS DRAWING IS THE PROPERTY OF FRAMEWORK. COPYRIGHT IS RESERVED BY THEM AND THE DRAWING IS ISSUED ON THE CONDITION THAT IT IS NOT COPIED, REPRODUCED, RETAINED OR DISCLOSED TO ANY UNAUTHORISED PERSON, EITHER WHOLLY OR IN PART WITHOUT THE CONSENT IN WRITING OF FRAMEWORK.



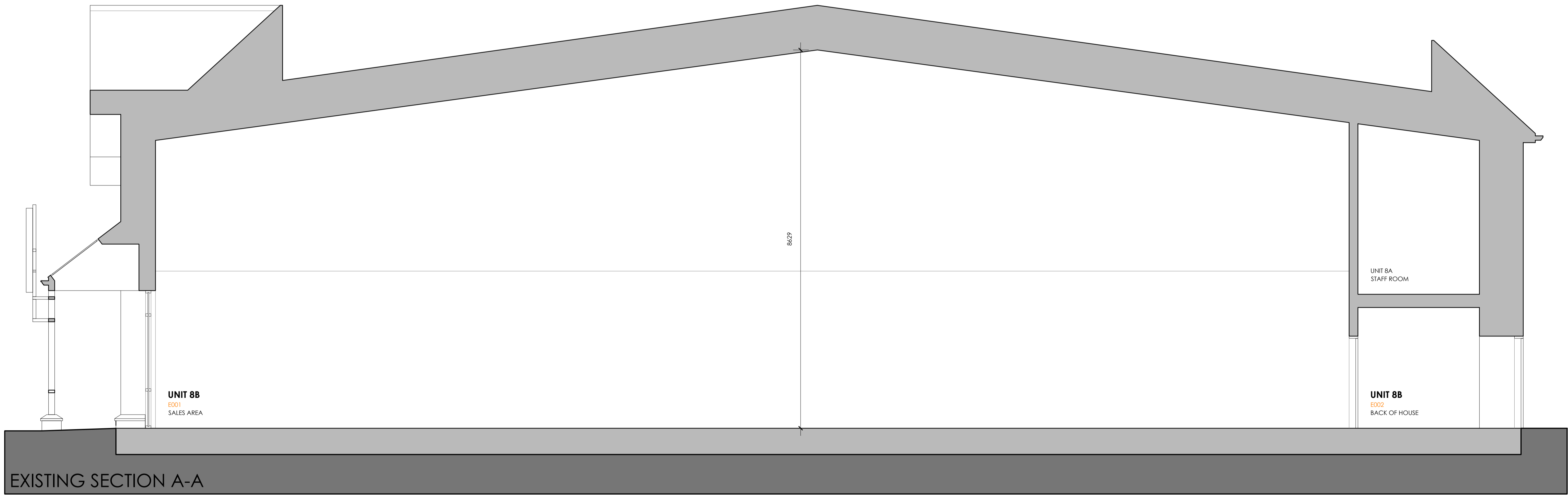
**KEY**

- ROOF**
- 1A PLAIN CLAY TILE
  - 1B GLAZED ROOFLIGHT
- FASCIAS AND SOFFIT:**
- 2 TIMBER FASCIAS AND SOFFITS WITH ALUMINIUM RAINWATER GOODS; COLOUR WHITE
- WALLS**
- 3A FACING RED MULTI BRICKWORK WITH STONE BANDING AND CILLS
  - 3B RENDER; COLOUR WHITE
  - 3C METAL PROFILED CLADDING; COLOUR RED

**GLAZING**

- 4A PPC ALUMINIUM CURTAIN WALL WITH FULLY GLAZED DOORS; COLOUR WHITE
  - 4B PPC ALUMINIUM INSULATED SPANDREL PANEL; COLOUR WHITE
- SERVICE DOOR**
- 5 PPC STEEL DOORS AND FRAMES; COLOUR WHITE
- SIGNAGE AND METALWORK**
- 6 FEATURE SIGNAGE ZONE AND METALWORK; COLOUR WHITE

EXISTING NORTHEAST ELEVATION



EXISTING SECTION A-A

Rev	Revision note	Date	Drawn by
	PROPOSED ALTERATIONS TO RETAIL UNIT AT UNIT 88 CARLTON CENTRE, LINCOLN FOR LINCOLNSHIRE CO-OPERATIVE		
	Drawn by JW	Checked	Date SEP 2023
	Scale 1:50 @ A1		
	EXISTING ELEVATIONS AND SECTION	Dwg No J2335 - 00115	Rev -