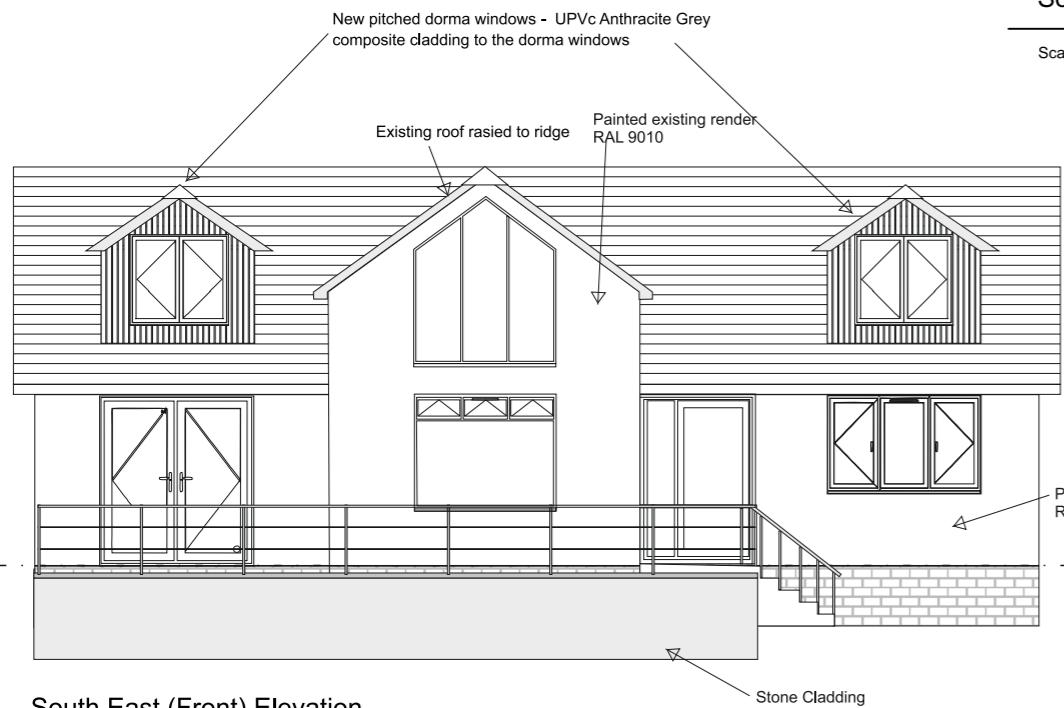


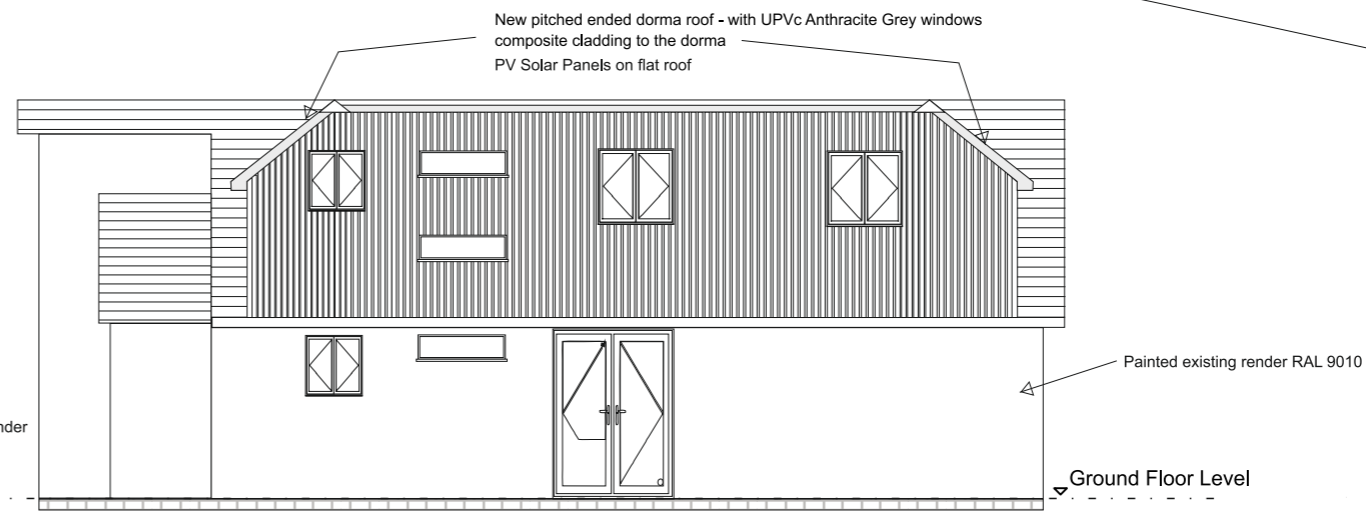
South West (Side) Elevation

Scale 1:100



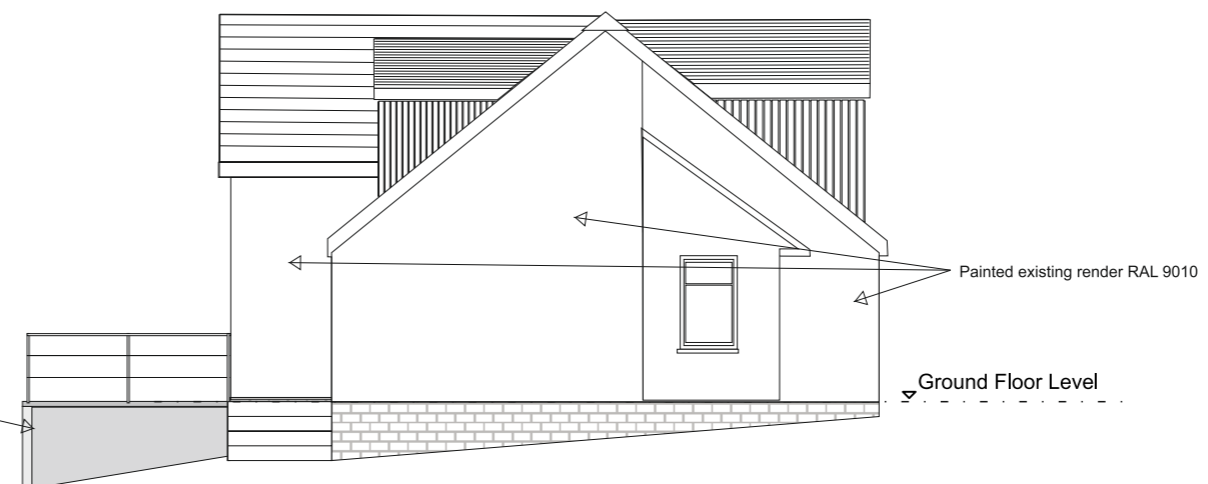
South East (Front) Elevation

Scale 1:100



North West (Rear) Elevation

Scale 1:100



North East (Side) Elevation

Scale 1:100



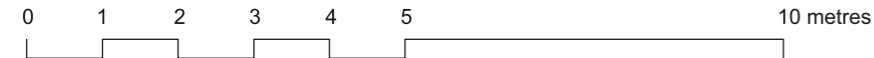
Stone Cladding

All windows changed from White UPVc to flush casement Anthracite Grey UPVc

Roof covering replaced on house and garage with Westland Natural Slate 500 x 250mm Graphite



Composite Cladding by Hyperion
Fire Rating - Class D
Carbon Footprint - 69% lower than timber
Recycled Materials - 90% recycled



REV	DATE	DESCRIPTION
-	01/08/23	PLANNING
A	16/08/23	Non-material amendments Inc. Change roof layout it fit PV panels

JOB TITLE
Proposed Loft Conversion & Re-modelling
Durlston, Barline, Beer EX12 3LW

DRAWING TITLE
Proposed Elevations

First issued	16/08/23
Scale	1:100 @ A3
Job code	Durlston
Status	PL
Drawing number	2023-13-August-RevA
Revision	A
Drawn by:	AB
Checked by:	JB