

Proposed Access Track Strathgroy Farmhouse

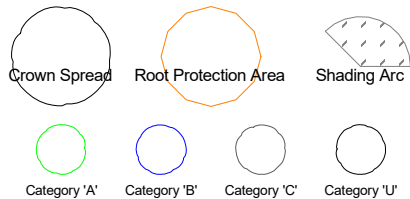
Proposed Planting Plan

SCALE : 1 : 2000 @ A4 DATE : 16/10/2023



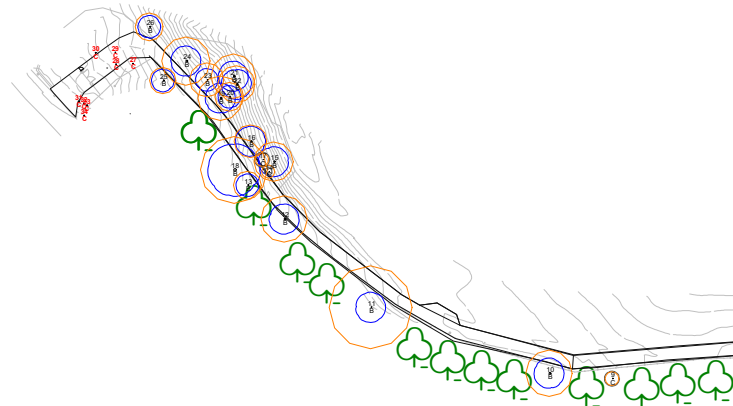
MAP FILENAME : Strathgroy PPP

Prepared by Tay Ecology Ltd
Email: info@tayecology.co.uk
Web: www.tayecology.co.uk



0 120m

- Planting Schedule
- Plant in first planting season (Oct-Mar) following completion of conversion
 - Excavate planting pits 50 x 50x 30cm
 - Plant trees of 1.5m-3m height
 - Plant shrubs 0.2m-0.5m height
 - Use stakes and ties to support trees
 - Plant trees 1-10m apart
 - Plant small groups of same species with small clearings between
 - Any plants which become damaged or die within 5 years will be replaced.



At this site it is recommended that sessile oak *Quercus petraea* and pedunculate oak *Quercus robur* trees are planted between the veteran ash to provide a future treeline which is of comparable and high ecological and landscape significance.

There is also capacity in the lower reaches of the track for planting a wider range of species including alder *Alnus glutinosa*, silver birch *Betula pendula*, hazel *Corylus avellana*, holly *Ilex aquifolium*, bird cherry *Prunus padus*, wild cherry *Prunus avium*, rowan *Sorbus acuparia* and willow *Salix* spp..

All planting must be agreed with the landowner and tenant farmer and trees must be suitably and robustly protected from grazing animals.