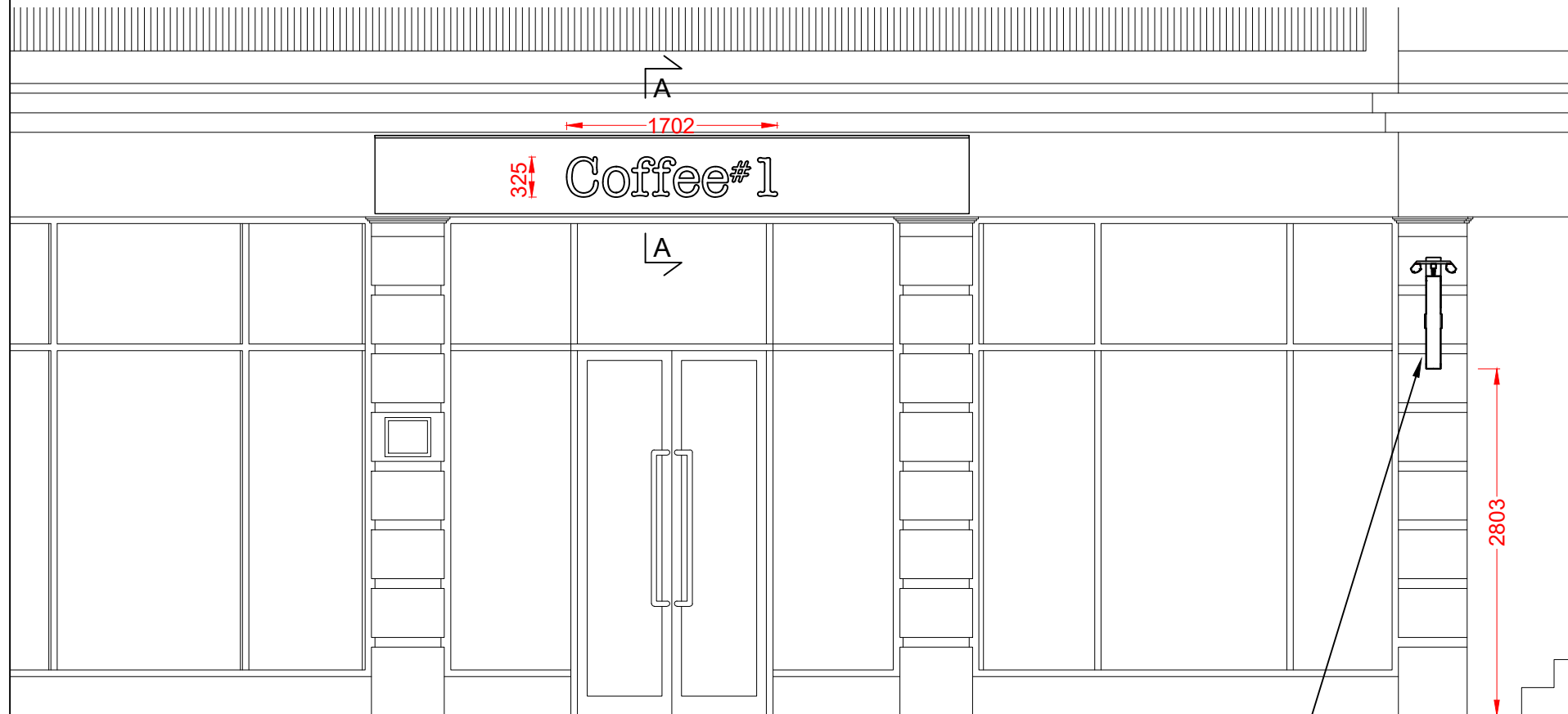
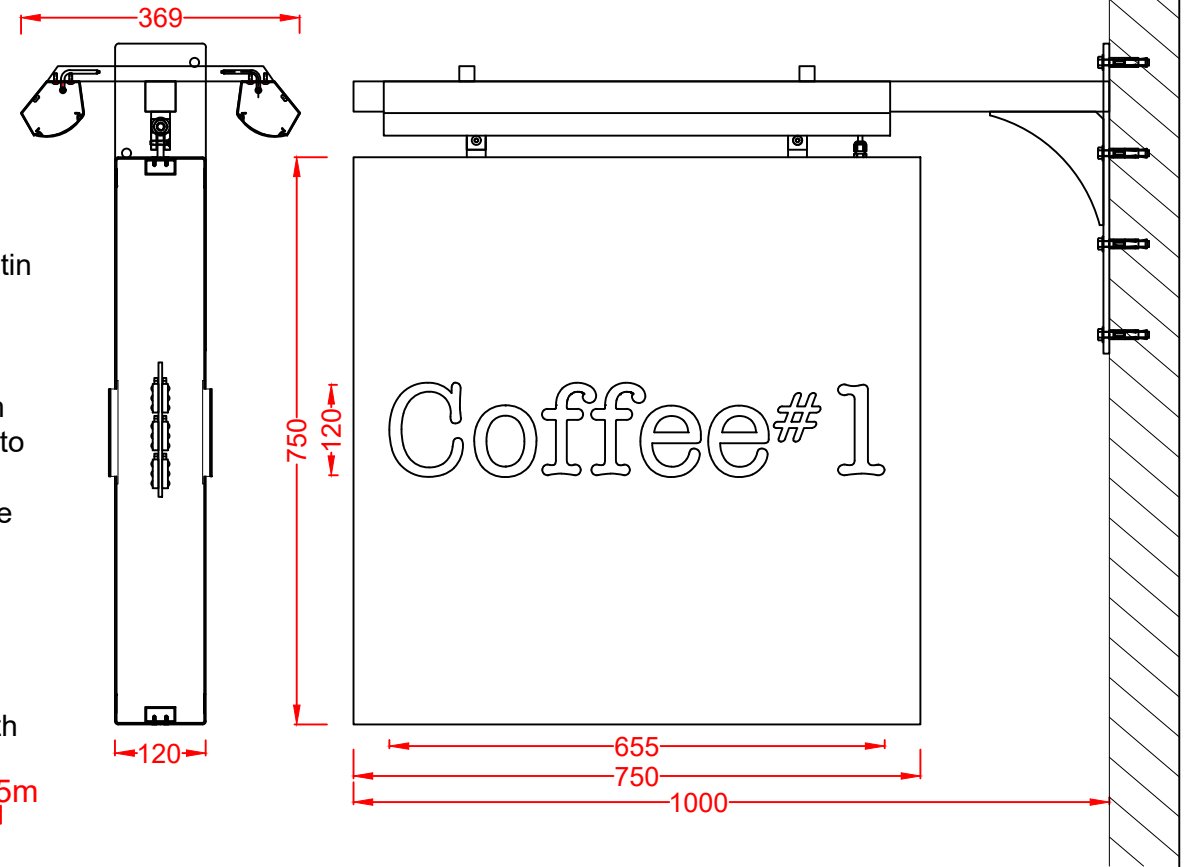


Vicar St Elevation  
Scale 1:50

projected sign position

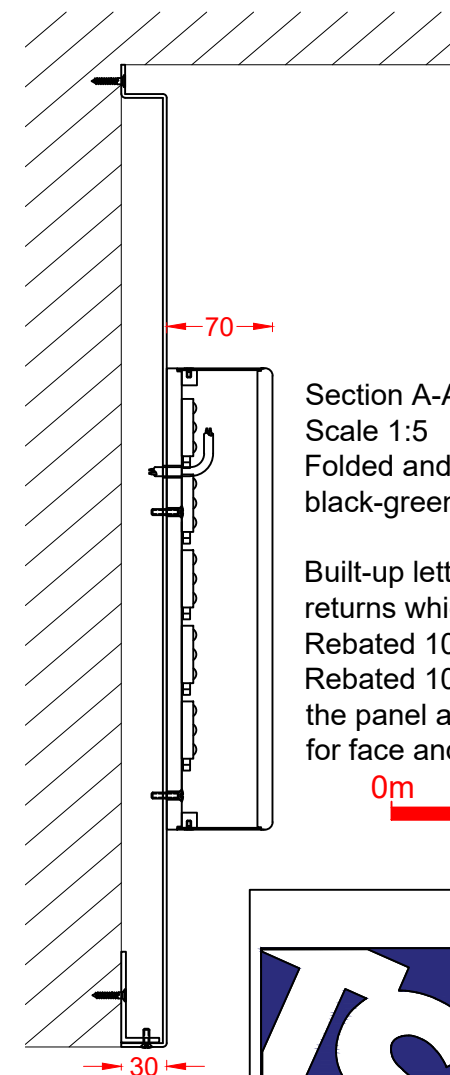


Projected Sign - 2 off  
Scale 1:10  
Folded and welded 2.5mm aluminium panels are finished satin black-green RAL 6012. Fret cut text is fitted with 10mm opal 030 acrylic push through letters with white 2mm aluminium bonded to the front of the acrylic to leave halo illumination. Fitted with low energy warm white LEDs for internal illumination. Internal frame hangs from swing block welded to a black steel projecting arm. Additional external illumination from black steel troughs fitted with low energy warm white LEDs.

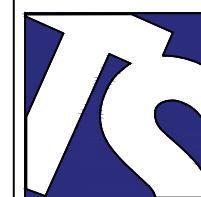


Side Elevation  
Scale 1:50

projected sign position



Section A-A through the text  
Scale 1:5  
Folded and welded 2mm aluminium fascia panel is finished black-green RAL 6012.  
Built-up letters have 1.2mm descaled stainless steel returns which are finished satin black green RAL 6012. Rebated 10mm opal 050 acrylic faces with radiused edges. Rebated 10mm opal 030 acrylic backs are screw fixed to the panel and are fitted with low energy warm white LEDs for face and halo illumination.



**Technical Signs**  
Floor 1 - Unit 3  
Hille Business Centre  
132 St Albans Road  
Watford, Herts, WD24 4AE  
Tel: 01923 811999  
Fax: 01923 811998  
E-mail: info@technicalsigns.co.uk

Client <b>Coffee#1</b>		
Address/Job details Unit 25 Vicar Lane Shopping Centre Chesterfield S40 1PY		
Elevations and specifications		
Job No -		
Drawn by DN	Date 24/10/22	
Scale As specified (A3)	Drawing No 596829	Rev