

GENERAL NOTES:

No	Revision / Issue	Date
-	-	-

Site :
Former Wheatsheaf Public House, 60 High Street, Swanscombe, Kent, DA10 0AH

Project / Drawing Title :
Redevelopment to provide 7 dwellings
Proposed Materials

Client :
Former Wheatsheaf Public House, 60 High Street, Swanscombe, Kent, DA10 0AH

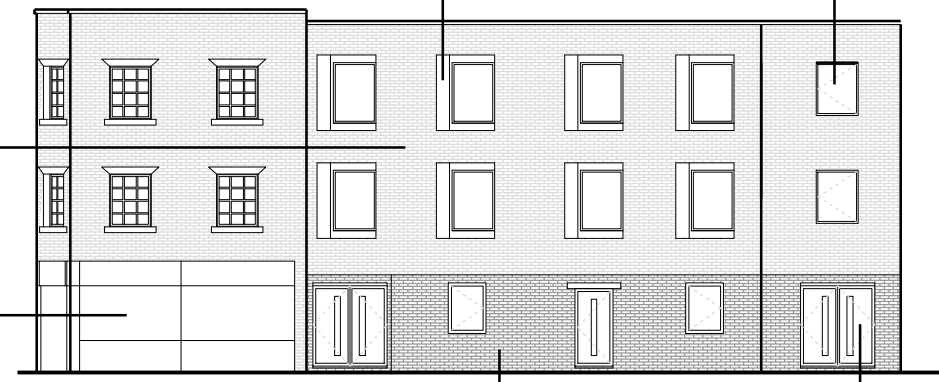
Do not scale from this drawing. The information may be suitable for discussion purposes and for obtaining Planning Approval Only. This drawing is NOT for construction purposes and should not be relied upon for any other works. This drawing is copyright and may not be copied or altered in any way except by way of written permission from the designers.
Copyright 2020 - 2023

Project Ref No : ABP-60H55-01	Sheet No : P-4
Date : 11 November 2023	Drawn By : DS
Scale : 1:200 @ A-3	



Aluminium windows by Reflex Elite in Anthracite (RAL 7016),

Zinc Cladding

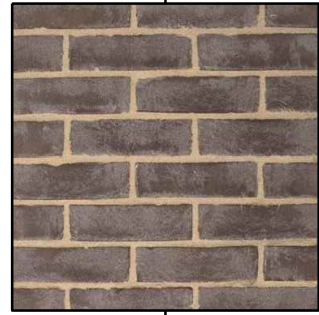


PROPOSED EAST ELEVATION



Smeed Dean Islington Yellow Rustica

Bespoke aluminium in Anthracite (RAL 7016)



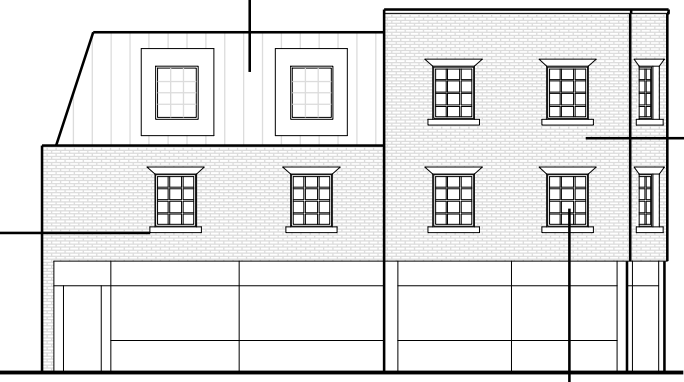
Pagus Grey by Wieneberger



Aluminium Doors by Reflex Elite in Anthracite (RAL 7016),



Marley Eternit Thrutone Fibre Cement Slate



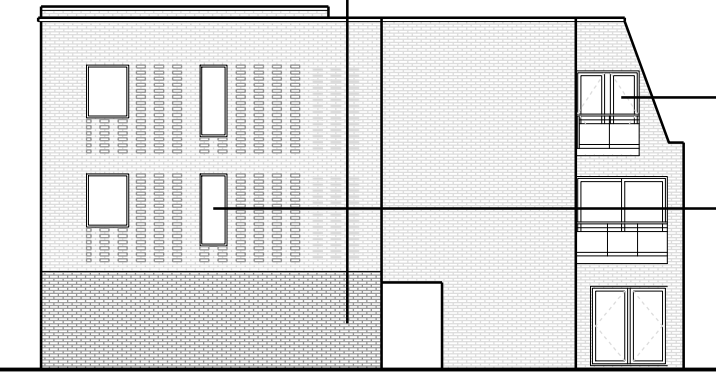
PROPOSED NORTH ELEVATION



Head and cills by Bekstone in Portland colour



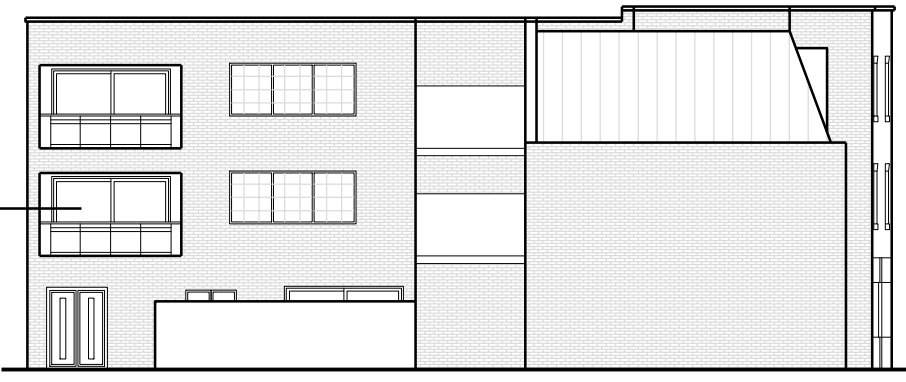
Sliding Sash Windows by Reflex Elite in white



PROPOSED WEST ELEVATION



Aluminium windows by Reflex Elite in Anthracite (RAL 7016),



PROPOSED SOUTH ELEVATION

1:200 @ A3

