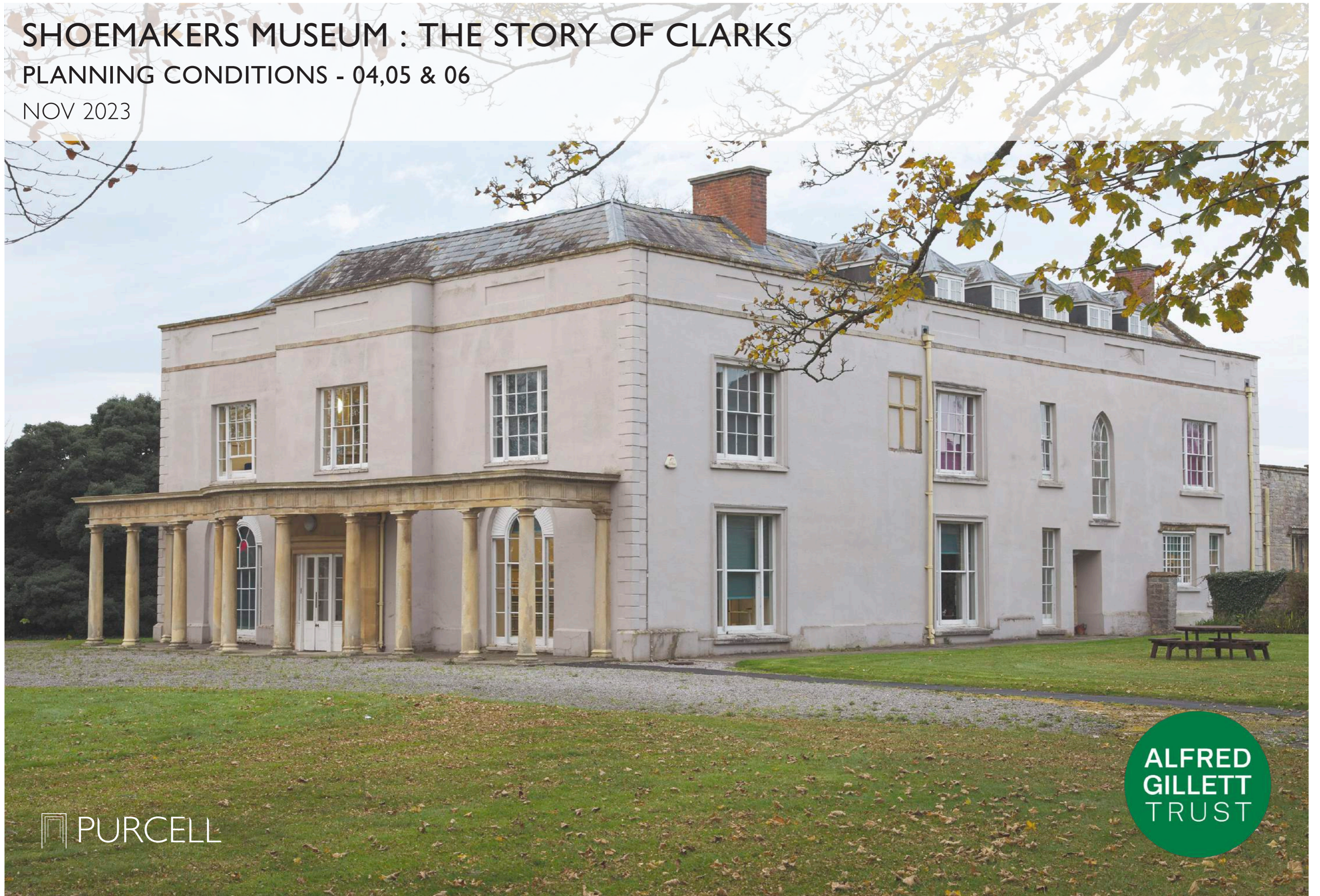


# SHOEMAKERS MUSEUM : THE STORY OF CLARKS

PLANNING CONDITIONS - 04,05 & 06

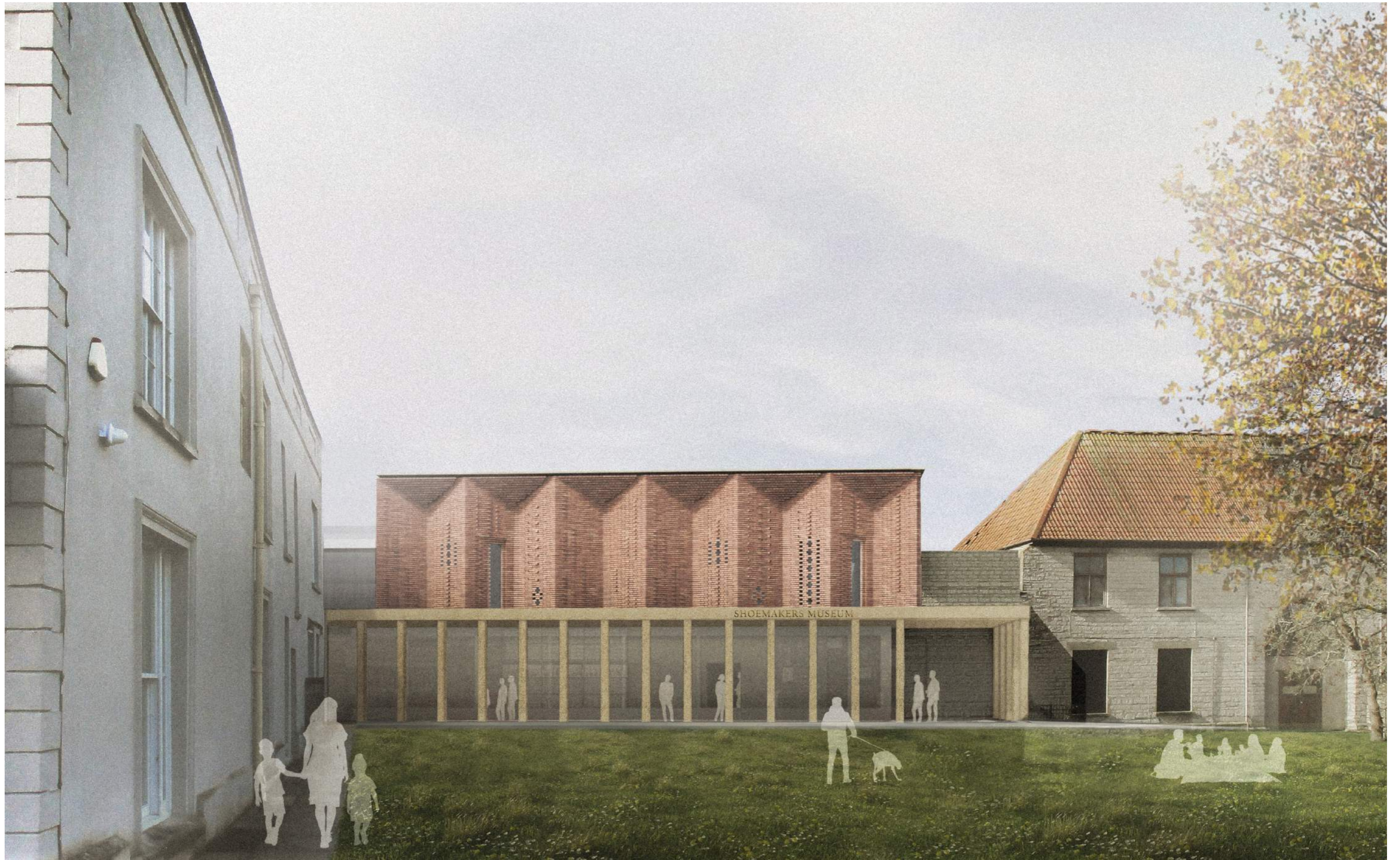
NOV 2023



 PURCELL

**ALFRED  
GILLET  
TRUST**





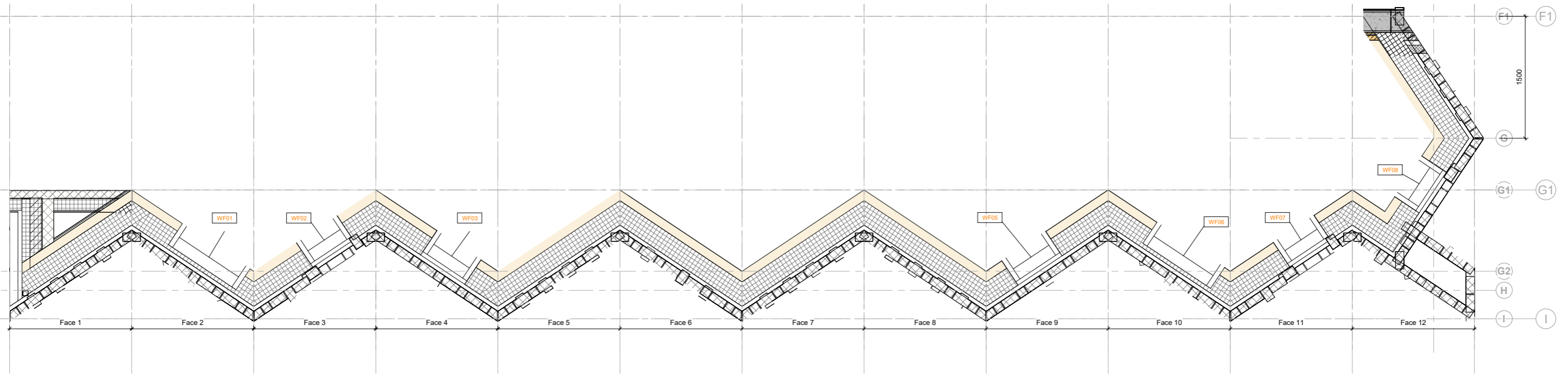
EAST ELEVATION VISUALISATION

CONDITION 04+05+06



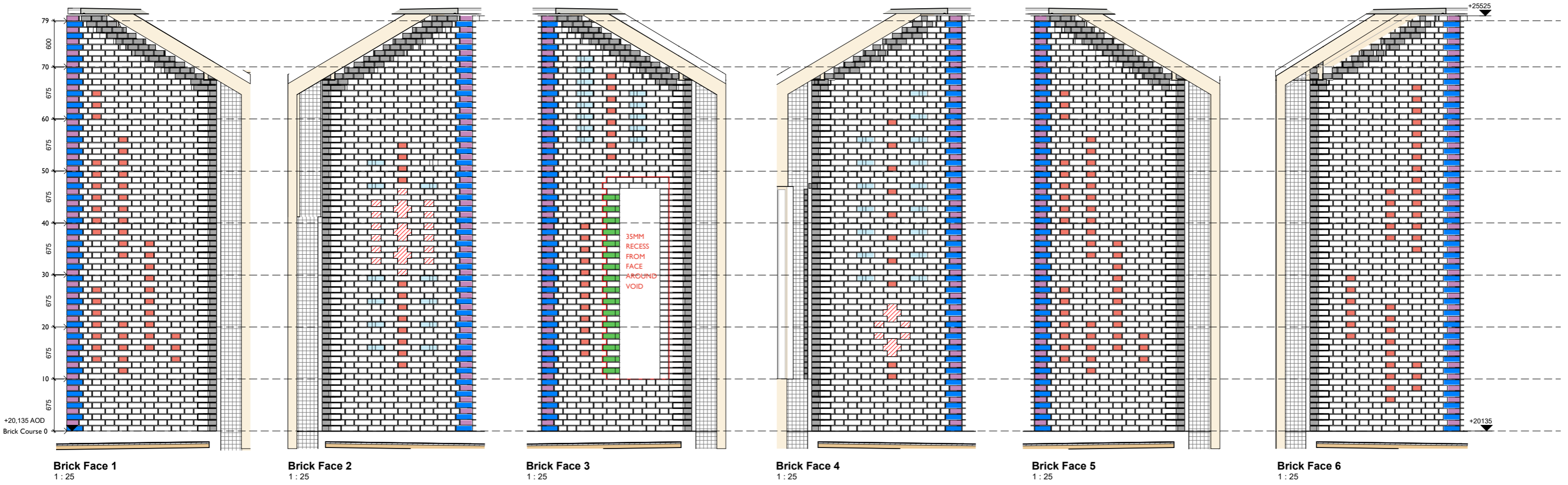
# BRICK FACADE DETAILS I

CONDITION 04



**Brick Facade Setting Out Plan**  
1 : 25

For window details refer to drawing 241742-GRA-PUR-GR-ZZ-DR-A-5506



**Brick Face 1**  
1 : 25

**Brick Face 2**  
1 : 25

**Brick Face 3**  
1 : 25

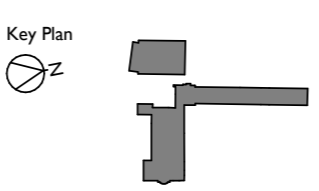
**Brick Face 4**  
1 : 25

**Brick Face 5**  
1 : 25

**Brick Face 6**  
1 : 25

Drawings are based on survey data and may not accurately represent what is physically present.  
Do not scale from this drawing. All dimensions are to be verified on site before proceeding with the work.  
All dimensions are in millimeters unless noted otherwise.  
Purcell shall be notified in writing of any discrepancies.

Brick Types Key	
	Standard brick
	BD.1.3 Projected Header (354)
	CP.2.2 Half Saddle Back Capping (514)
	AN.2.2 External Angle 45 (141)
	AN.5.1 Single Cant (100)
	Standard brick cut 45 (514)

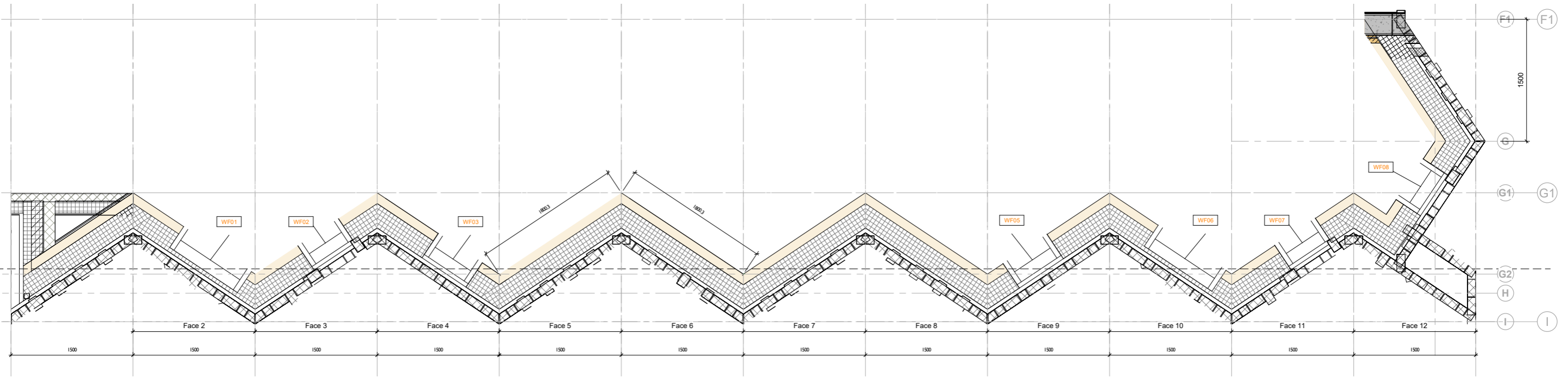


REV	DATE	DESCRIPTION
A	05/05/23	Stage 4 - Interim Issue
B	14/07/23	Stage 04 Draft
C	31/07/23	TENDER SET
TI	21/09/23	Main Works Tender Issue

CLIENT  
**Alfred Gillett Trust (AGT)**  
JOB NUMBER PROJECT  
**241742 Shoemakers Museum**  
TITLE  
**North Elevation - Brick Facade Sheet I**

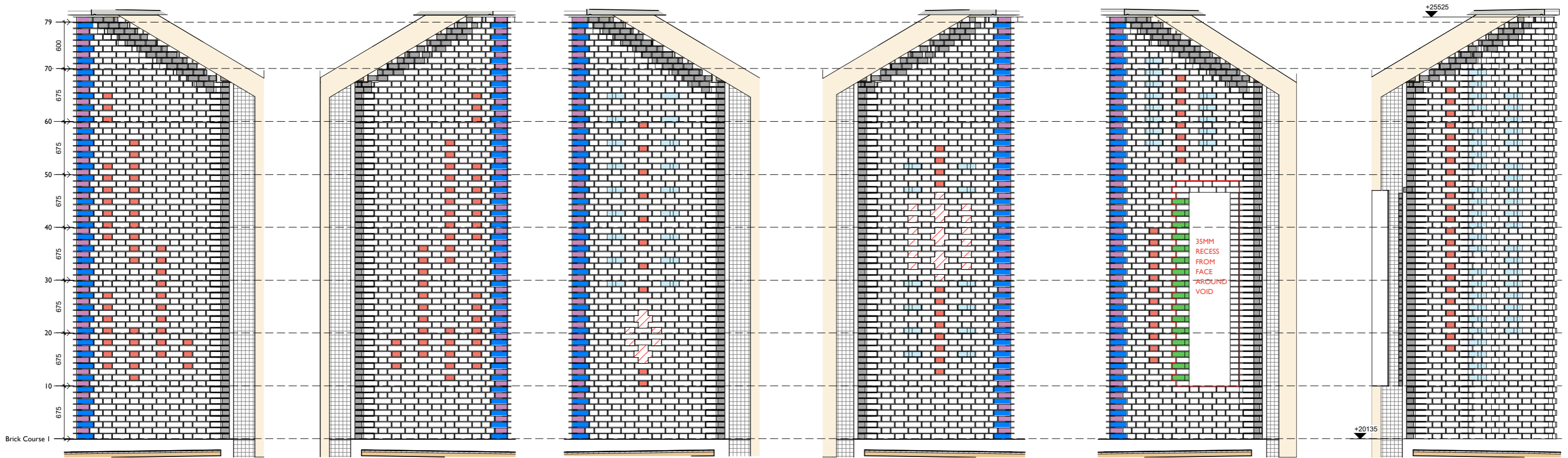
SIZE	SCALE	LAST REVISED	DRAWN	CHECKED
AIL As indicated	See revision list	MJ	AF	
REV	SUITABILITY/REASON FOR ISSUE			
<b>TI</b>	<b>Tender Issue</b>			
DRAWING NUMBER <b>241742 -GRA-PUR-GR-ZZ-DR-A-2150</b>				





Brick Facade Setting Out Plan Copy 1  
1 : 25

For window details refer to drawing 241742-GRA-PUR-GR-ZZ-DR-A-5506



Brick Face 7  
1 : 25

Brick Face 8  
1 : 25

Brick Face 9  
1 : 25

Brick Face 10  
1 : 25

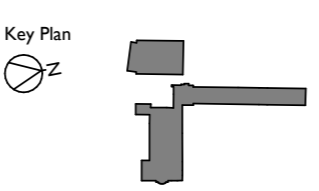
Brick Face 11  
1 : 25

Brick Face 12  
1 : 25

Drawings are based on survey data and may not accurately represent what is physically present.  
Do not scale from this drawing. All dimensions are to be verified on site before proceeding with the work.  
All dimensions are in millimeters unless noted otherwise.  
Purcell shall be notified in writing of any discrepancies.

**Brick Types Key**

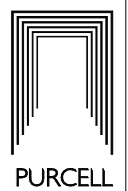
Standard brick	CP.2.2 Half Saddle Back Capping (514)
Peforation in brickwork	AN.2.2 External Angle 45 (141)
BD.1.3 Projected Header (354)	AN.5.1 Single Cant (100)
	Standard brick cut 45 (514)

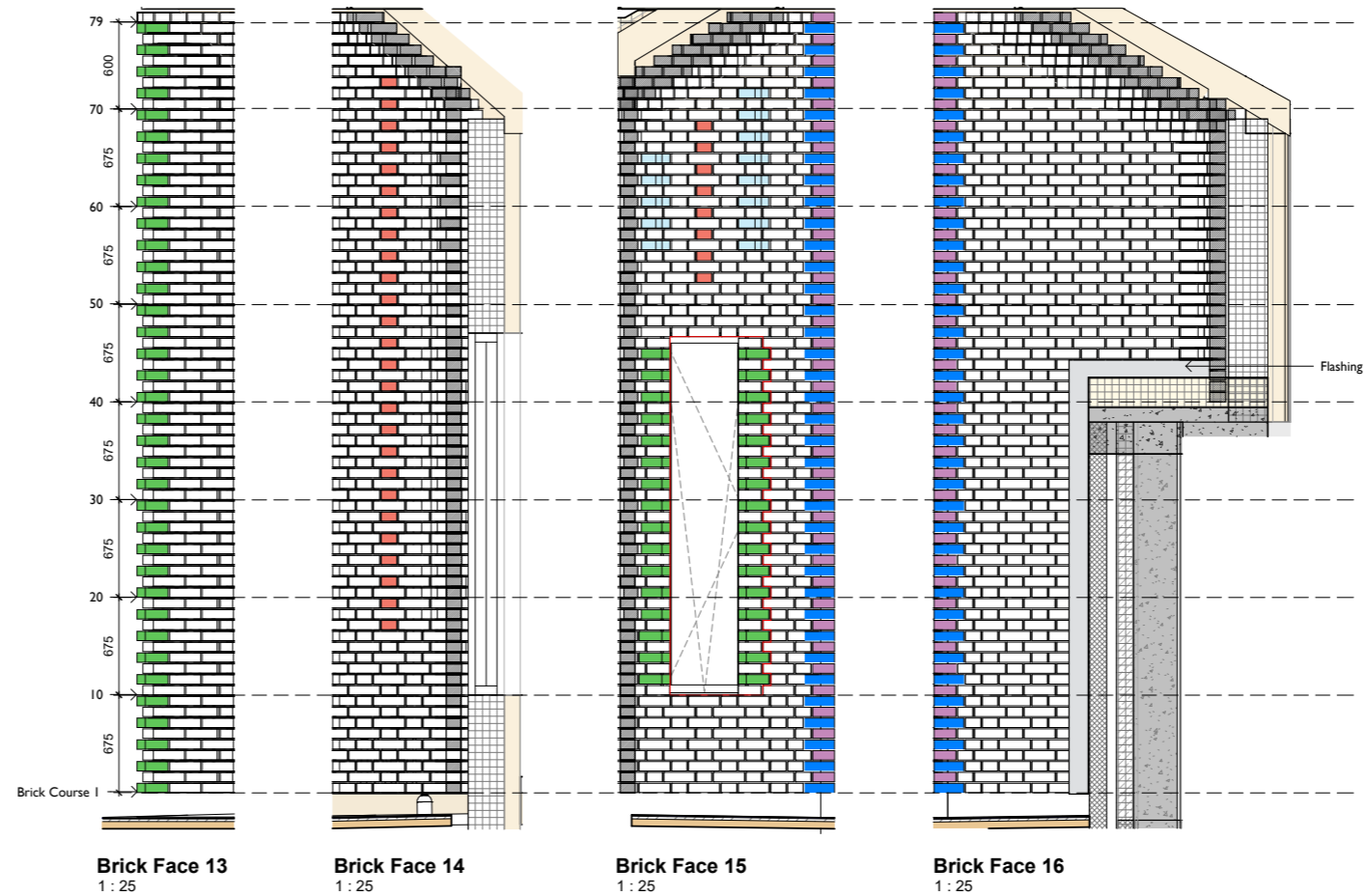
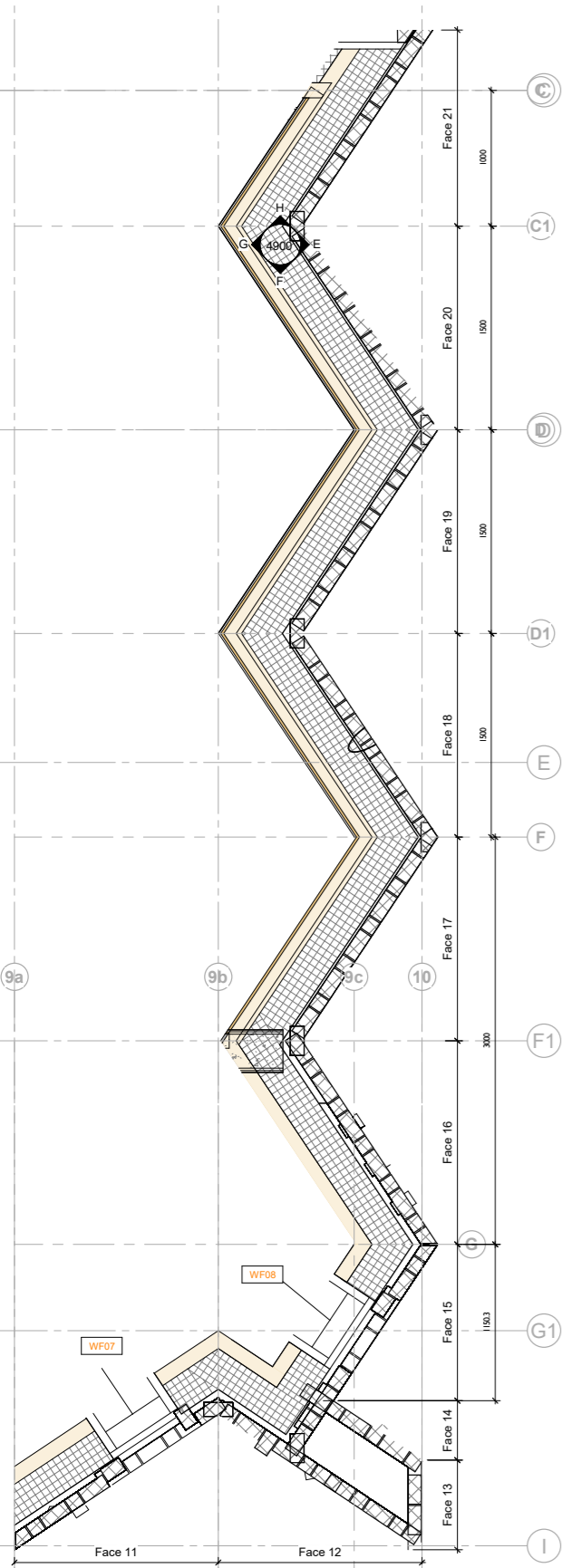


REV	DATE	DESCRIPTION
A	05/05/23	Stage 4 - Interim Issue
B	14/07/23	Stage 04 Draft
C	31/07/23	TENDER SET
TI	21/09/23	Main Works Tender Issue

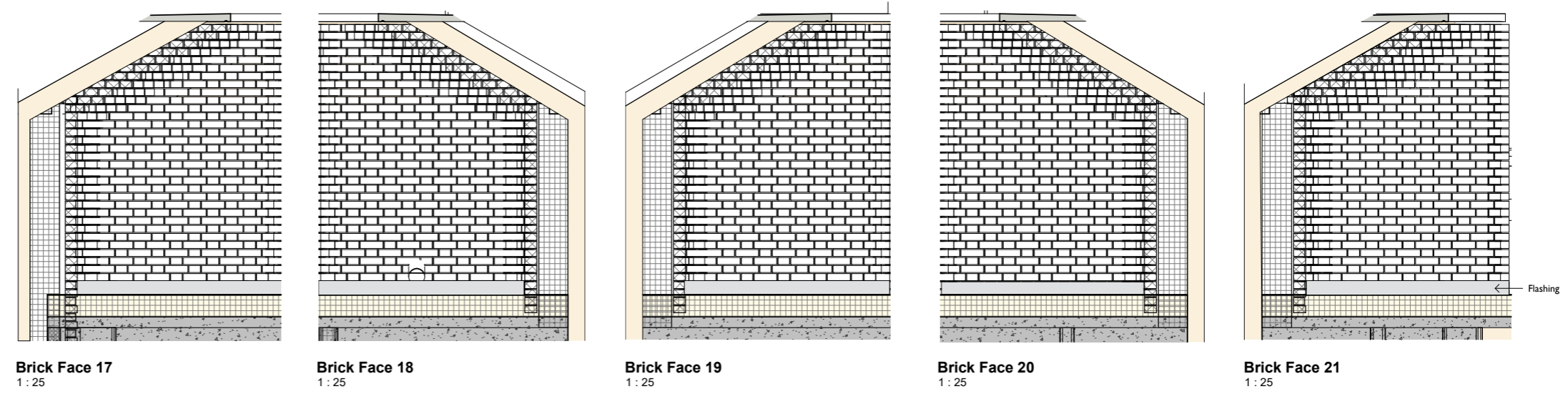
CLIENT  
**Alfred Gillett Trust (AGT)**  
JOB NUMBER PROJECT  
**241742 Shoemakers Museum**  
TITLE  
**North Elevation - Brick Facade Sheet 2**

REV	SIZE	SCALE	LAST REVISED	DRAWN	CHECKED
TI	AIL As indicated		See revision list	MJ	AF
SUITABILITY/REASON FOR ISSUE					
<b>Tender Issue</b>					
DRAWING NUMBER <b>241742 -GRA-PUR-GR-ZZ-DR-A-2151</b>					





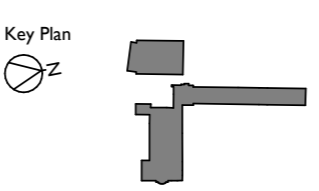
For window details refer to drawing 241742-GR-PUR-GR-ZZ-DR-A-5506



Drawings are based on survey data and may not accurately represent what is physically present.  
Do not scale from this drawing. All dimensions are to be verified on site before proceeding with the work.  
All dimensions are in millimeters unless noted otherwise.  
Purcell shall be notified in writing of any discrepancies.

**Brick Types Key**

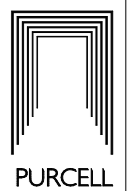
	Standard brick		CP.2.2
	Peforation in brickwork		Half Saddle Back Capping (514)
	BD.1.3		AN.2.2
	Projected Header (354)		External Angle 45 (141)
			AN.5.1
			Single Cant (100)
			Standard brick cut 45 (514)



REV	DATE	DESCRIPTION
A	05/05/23	Stage 4 - Interim Issue
B	31/07/23	TENDER SET
TI	21/09/23	Main Works Tender Issue

CLIENT  
**Alfred Gillett Trust (AGT)**  
JOB NUMBER PROJECT  
**241742 Shoemakers Museum**  
TITLE  
**East Elevation - Canopy & Brick Facade**

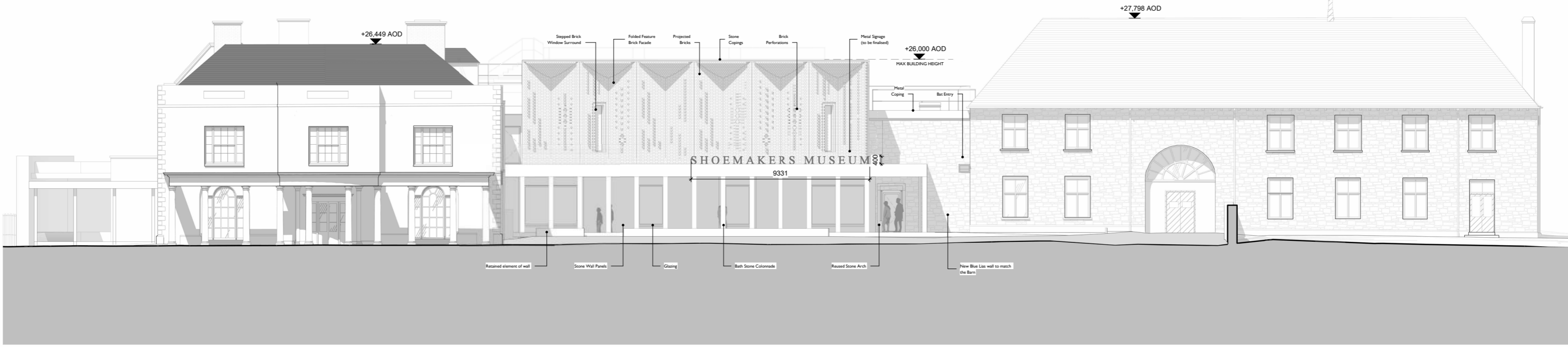
REV	SCALE	LAST REVISED	DRAWN	CHECKED
AIL	As indicated	See revision list	MJ	AF
TI	SUITABILITY/REASON FOR ISSUE			
<b>Tender Issue</b>				
DRAWING NUMBER <b>241742 -GRA-PUR-GR-ZZ-DR-A-2153</b>				





EAST ELEVATION - STAGE 04

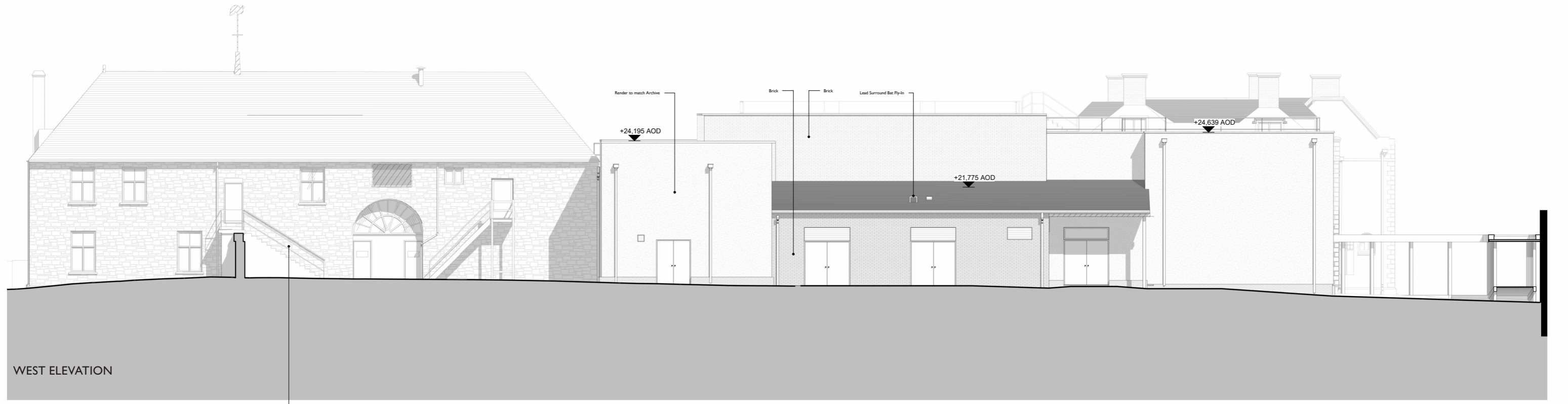
CONDITION 04+05+06



EAST ELEVATION



WEST ELEVATION - STAGE 04



WEST ELEVATION



PROPOSED BRICKS EAST FACADE

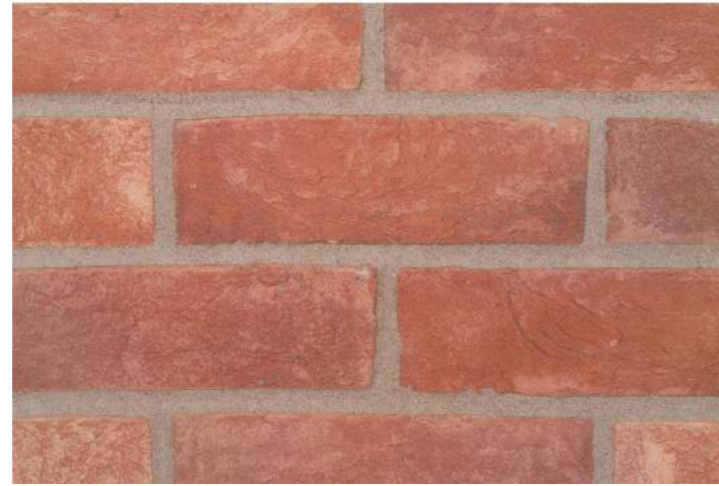


BOURTON MANOR ANTIQUE

NORTHCOT BRICK

HANDMADE

PROPOSED 40% IN BLEND



STRATFORD MELLOW

NORTHCOT BRICK

HANDMADE

PROPOSED 20% IN BLEND



PLUMSTEAD ANTIQUE

NORTHCOT BRICK

HANDMADE

PROPOSED 20% IN BLEND



BERKSHIRE RED

NORTHCOT BRICK

MACHINE-MADE (TUMBLED)

PROPOSED 20% IN BLEND

PROPOSED BRICKS WEST FACADE



DONNINGTON DEEP RED

NORTHCOT BRICK

MACHINE MADE (TUMBLED)

PROPOSED 50% IN BLEND



MALVERN RED

NORTHCOT BRICK

MACHINE-MADE (TUMBLED)

PROPOSED 50% IN BLEND

THESE BRICKS ARE THE CURRENT PROPOSAL - WE WILL BUILD 3 SAMPLE PANELS TO TEST/REVIEW THE PERCENTAGE BLEND AND DIFFERENT LIME MORTAR COLOURS



EXTERNAL MATERIALS



**THROUGH COLOURED RENDER TO REAR FACADE**

EWI PRO  
SILICONE RENDER

**BATH STONE TO COPINGS + STONE PANELS**

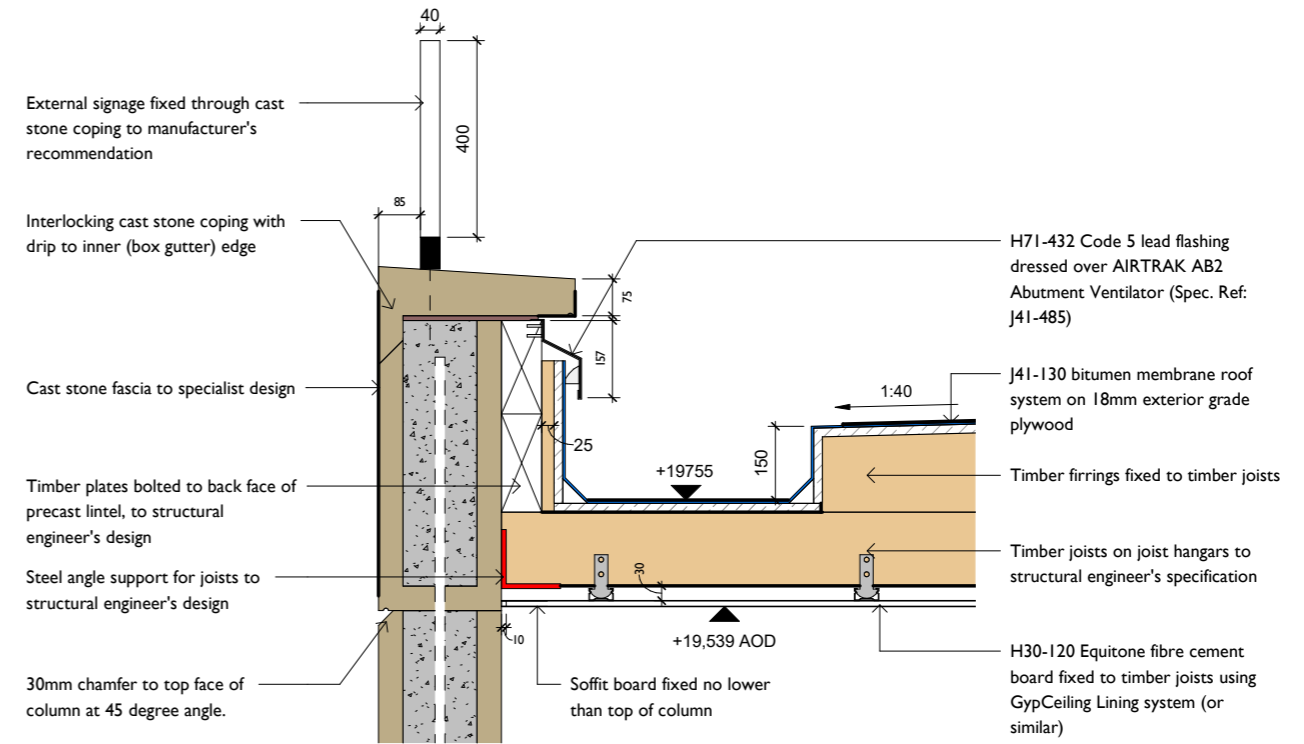
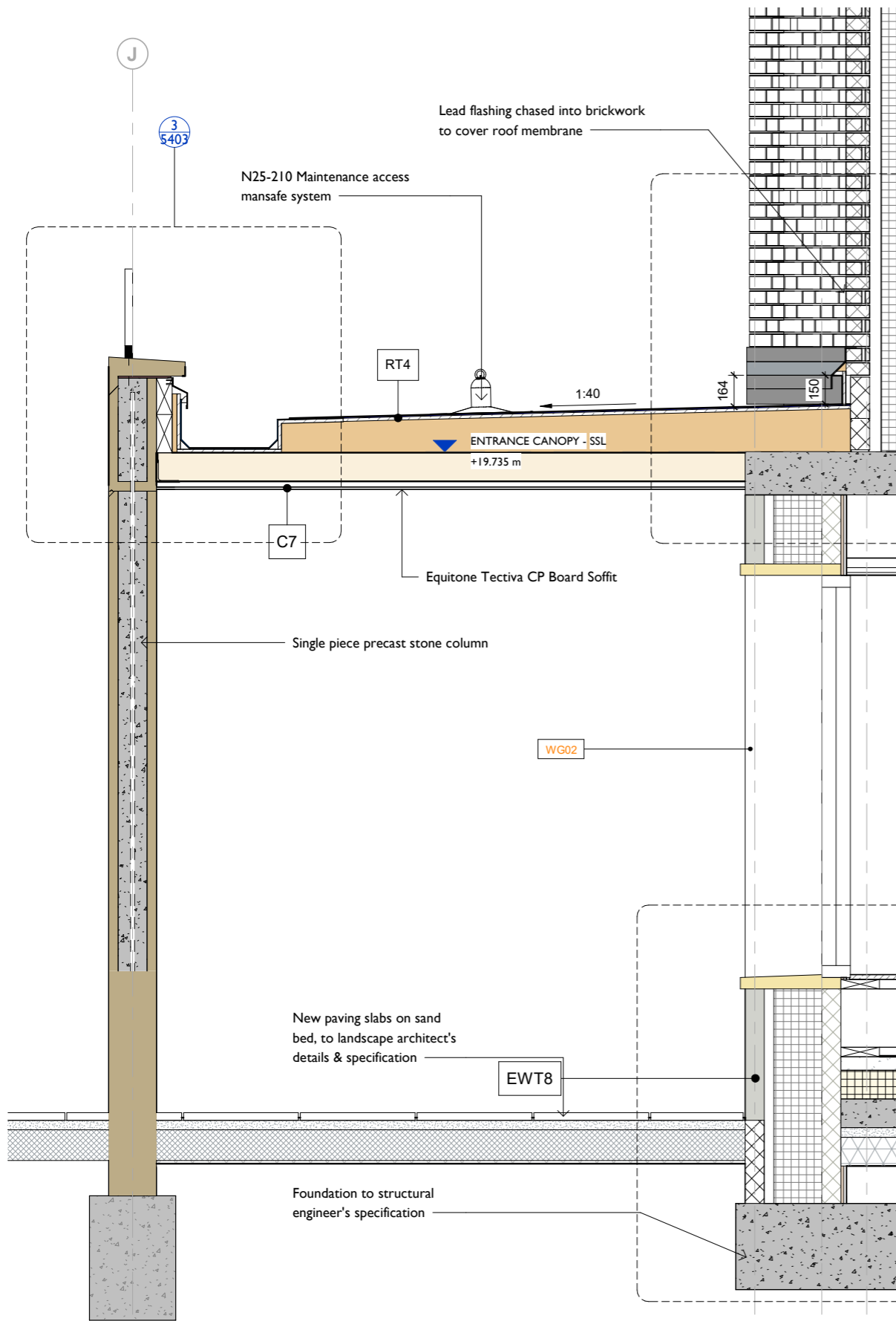
VOBSTER ARCHITECTURAL  
WET CAST BATH STONE



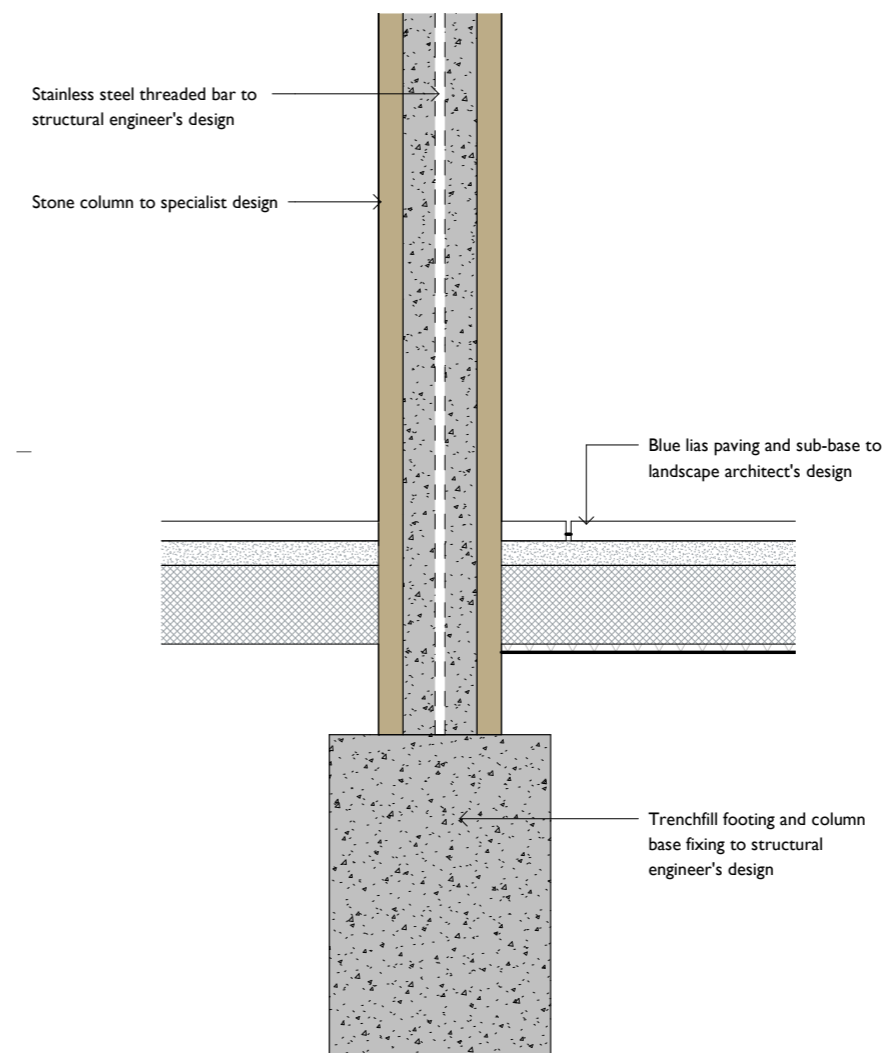
**SLATE ROOF TO BAT LOFT**

SSQ  
DEL CARMEN





**Main entrance canopy eaves detail**  
1 : 10



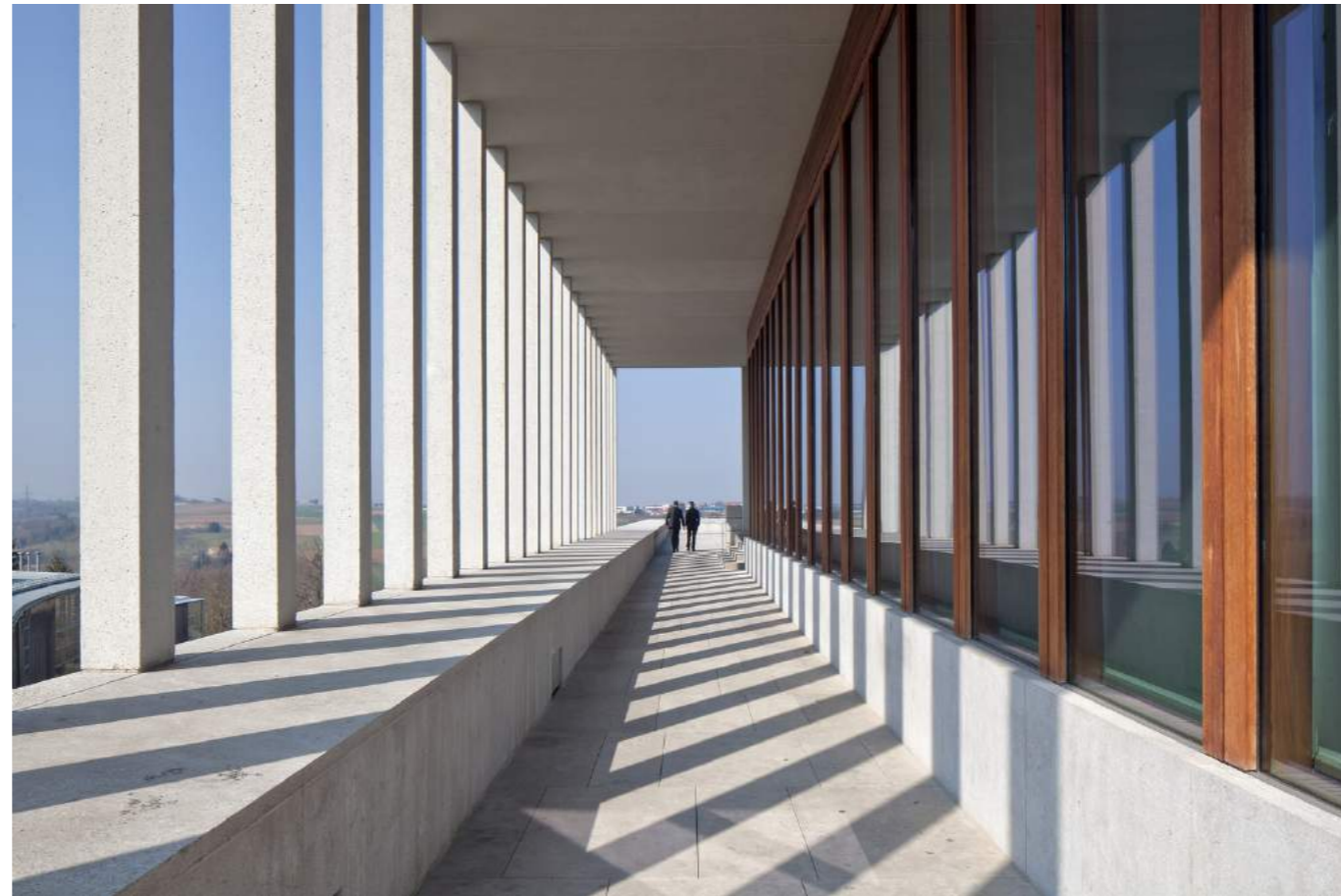


COLONNADE MATERIALS

BATH STONE TO COLUMNS AND MUSEUM WALL

VOBSTER ARCHITECTURAL

WET CAST BATH STONE



DAVID CHIPPERFIELD  
MUSEUM OF MODERN LITERATURE,  
MARBACH

BLUE LIAS PAVING TO COLONNADE

HADSPEN QUARRY

BUSH HAMMERED + TUMBLED BLUE LIAD STONE PAVOIRS





