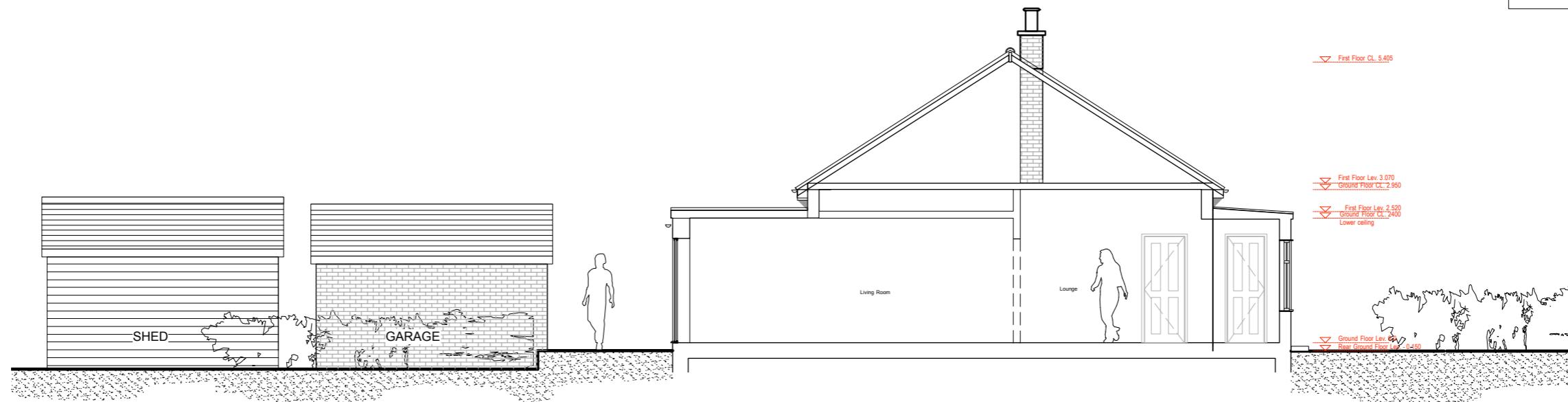
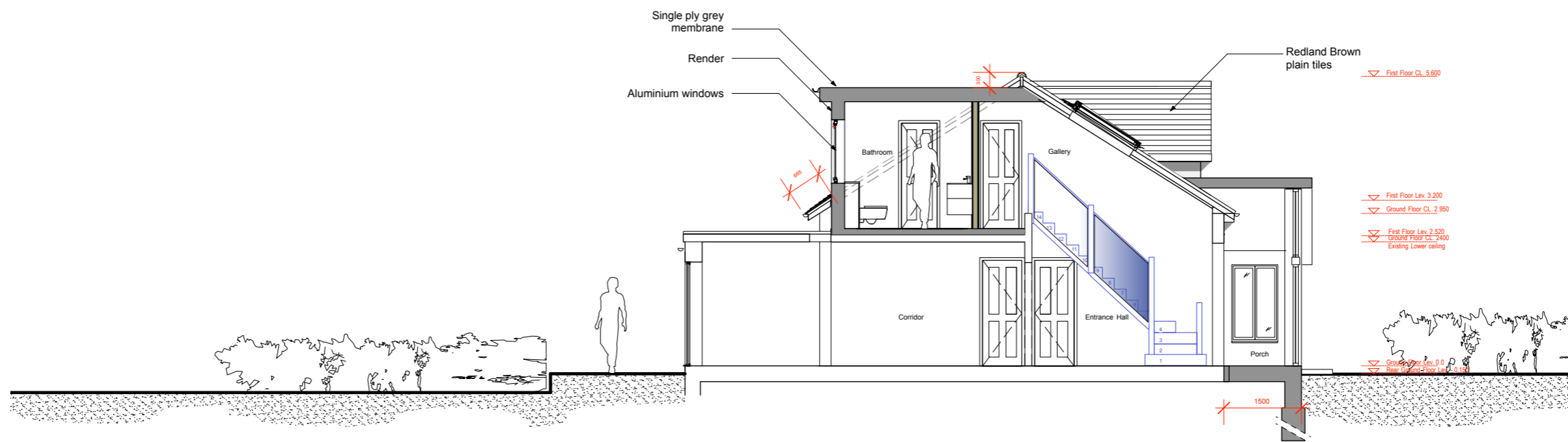


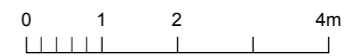
- Materials:**
1. Slate roof tile
 2. Render
 3. Red facing brick
 4. Double glazed windows/Doors
 5. Grey roofing membrane
 6. Black fascia/soffit, gutter & downpipe



EXISTING SECTION AA



PROPOSED SECTION AA



2 New Street
Sawbridgeworth
Herts CM21 9BA

07884294779

Revisions:
 Rev 1 - Updated in accordance with comments by Harlow Development Management - 26.04.23
 Rev 2 - Updated in accordance with comments by Harlow Development Management - 23.06.23
 Rev 3 - Updated in accordance with comments by Harlow Development Management - 27.06.23
 Rev 4 - Updated in accordance with client comments. - 06.11.23

Project: 30 Priory Avenue, Harlow, CM17 0HJ
 Drawing: Existing and Proposed Section AA
 Date: June 2023

Status: Planning
 Scale: 1:100@A3
 Drawing No: 0361-1300-P4