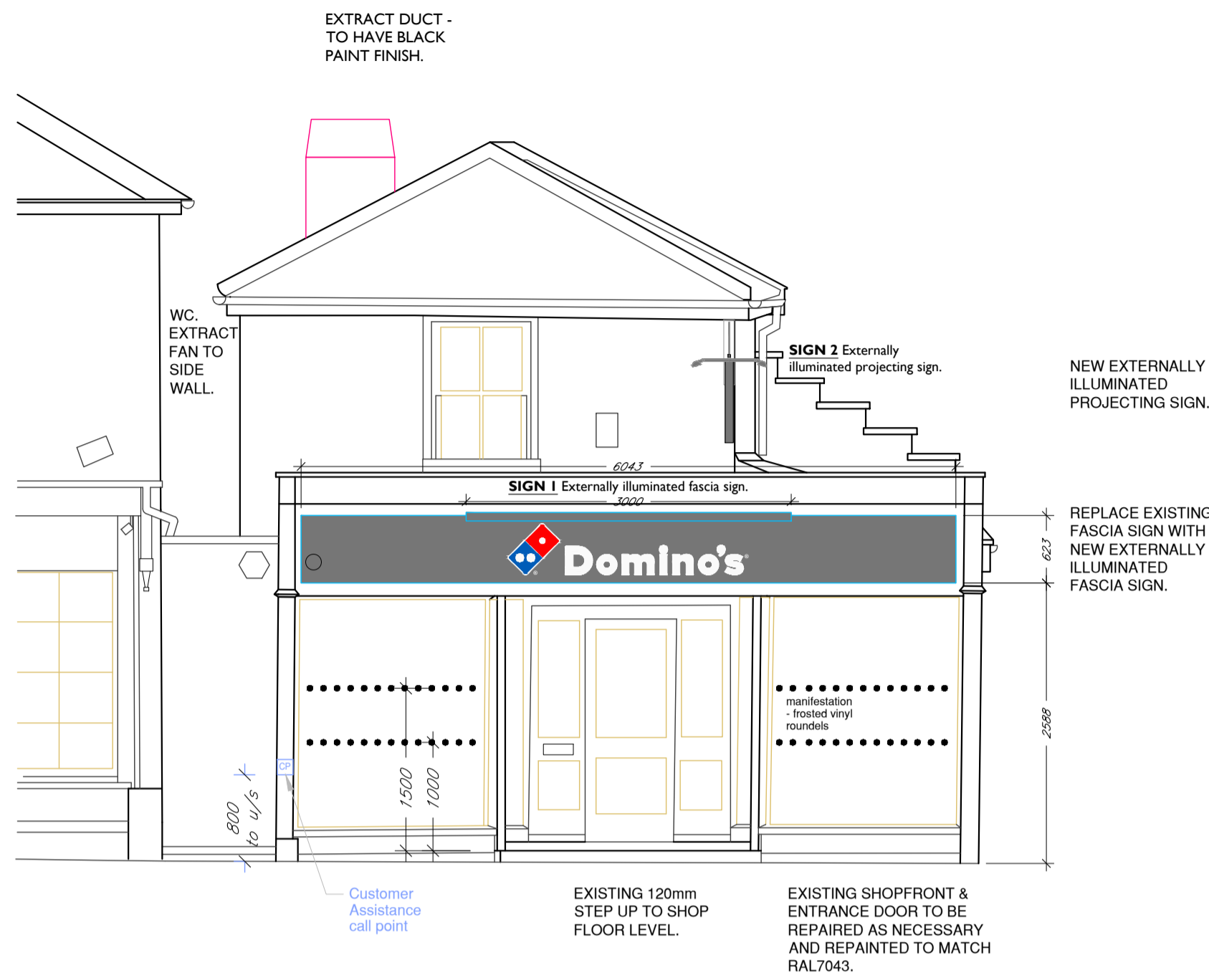


NOTE - Detailed design of extract ventilation system and air intake system by Specialist sub-contractor. Layout shown on drawing is indicative only.

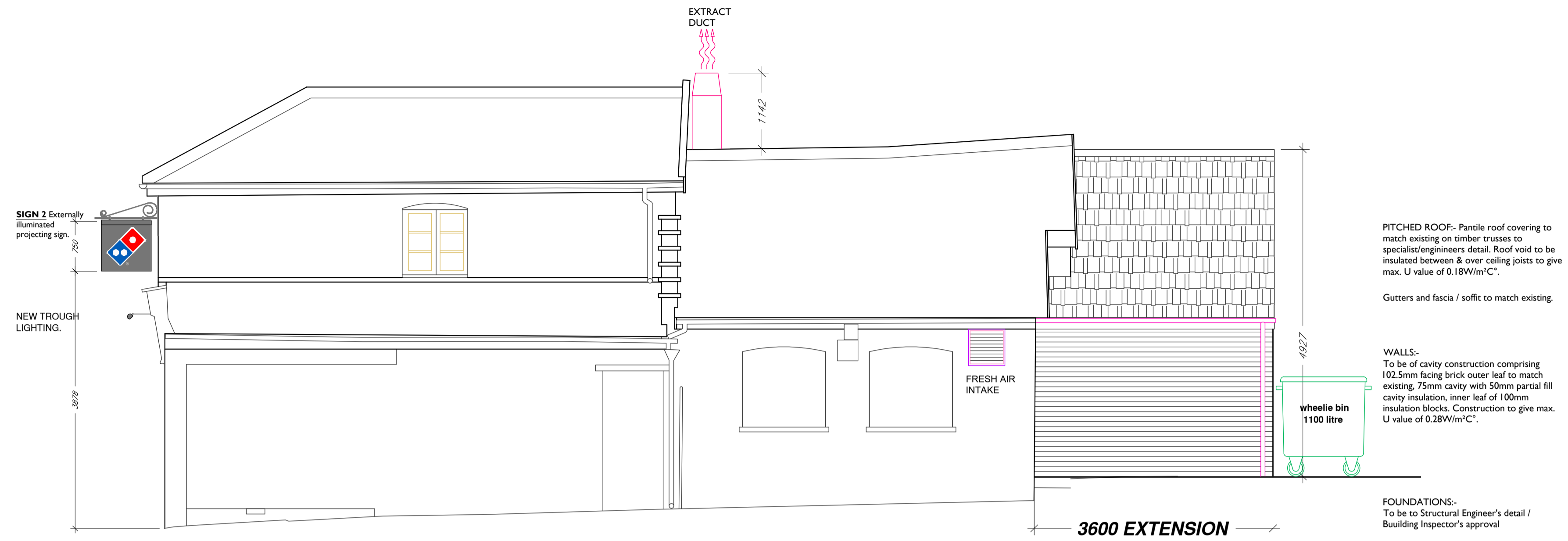
NOTES:

CONTRACTORS MUST VERIFY ALL DIMENSIONS ON SITE BEFORE COMMENCEMENT OF ANY WORK OR PREPARING MANUFACTURING DRAWINGS
Use of scale bar for scaling purposes to be used for securing planning purposes only.
ANY DISCREPANCIES ON THIS DRAWING ARE TO BE NOTIFIED TO THE ARCHITECT IMMEDIATELY.
HATTRELL LLP COPYRIGHT

REV	AMENDMENT	DATE	CHKD



FRONT ELEVATION (Mere Street)



SIDE ELEVATION

PROPOSED SIGNAGE

ALL SIGNAGE TO BE DESIGNED & INSTALLED IN ACCORDANCE WITH THE LATEST DOMINO'S UK & IRELAND SIGNAGE MANUAL (version 3 issued 02/07/20 or as subsequently amended).

FASCIA SIGN (1) - Externally Illuminated (Refer to drawing 3.1.4) -
Folded aluminium background tray finished RAL 7043 Traffic Grey, satin finish with individual built up lettering and logo mounted direct to face. Lettering and logo to be manufactured from 5mm White 069 acrylic faces with 3mm white 069 acrylic returns. Lettering and logo to be complete with foamex back trays. Logo to have self adhesive opaque vinyl detail direct to face. IP 5701 Gloss White opaque vinyl @ bottom of tile. Fascia to be illuminated via trough lighting finished RAL 7043 Traffic Grey, satin finish. Main contractor/others to ensure that a permanent waterproof seal is formed between the building and the sign via lead/zinc flashing. Lettering / logo depth = 33mm
Luminance = 580 candelas/m²

PROJECTING SIGN (2) - Externally Illuminated Hanging Board with Ornamental Bracket (Refer to drawing 3.2.4) -
Double sided projection sign 750mm x 750mm comprising of 2 x 2mm thick aluminium panels fitted within a decorative timber framework and wrought iron scroll work bracket (designs to vary) powder coated RAL 7043 Traffic Grey, satin finish. Face panels to accept opaque vinyl graphics to face. IP 5701 Gloss White opaque vinyl @ bottom of tile, applied direct to face panels. Panels to be illuminated externally via overhead Ecolum trough light finished RAL 7043 Traffic Grey, satin finish.
Luminance = 450 candelas/m²

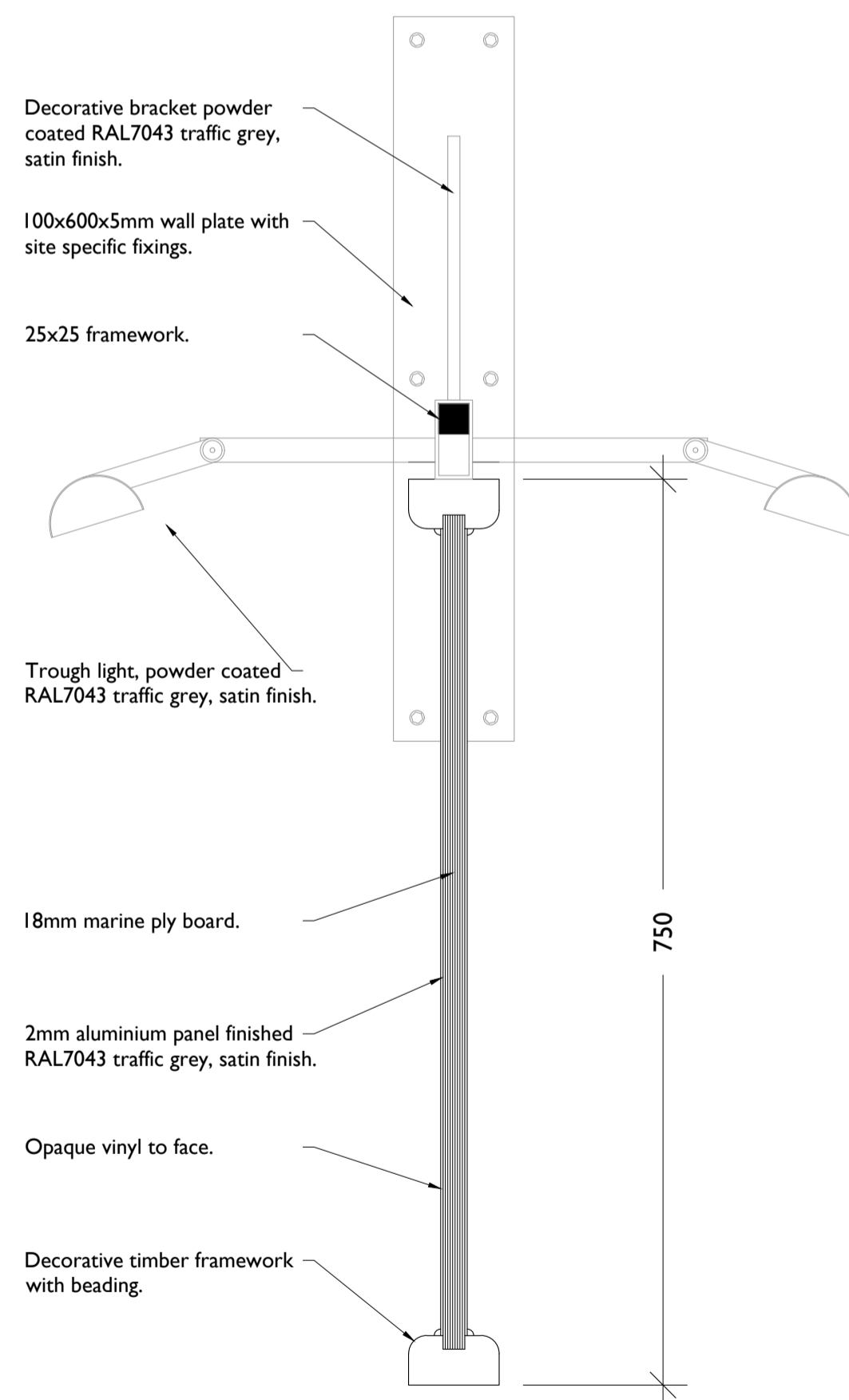
WINDOW MANIFESTATION (Refer to drawing 3.6.1) -
Where required, manifestation to glazed windows and doors to be in accordance with Approved Documents N2 & M2. Manifestation to be in the form of 50mm diameter self adhesive IP 5805 light silver frosted vinyl 'pips' reverse applied to glazing @ 100mm centres. Install one set at 1500mm high from floor level, second set fitted at 1000mm from floor level. NB, manifestation not required to windows where internal leaser bars are installed, due to integral modesty panel, or where there are internal window poster frames.

TYPEFACE -
The type face is to be Domino's UK Font. This & the tile logo are obtainable only from Domino's UK Property Department.

GENERAL NOTES -
ALL SIGNAGE TO BE DESIGNED & INSTALLED IN ACCORDANCE WITH THE LATEST DOMINO'S UK & IRELAND SIGNAGE MANUAL (version 3 issued 02/07/20 or as subsequently amended). The signage supplier's fabrication and installation drawings must not deviate from these requirements. Where bespoke signage designs are unavoidable they must be submitted to the DPG Design and Build team for approval and if necessary further approval from DPZ. Time for this approval must be built into any project requiring a bespoke sign design.
Fixing and support details to be approved by Local Authority, all by specialist signage contractor. Main contractor to provide suitable flat grounds and electrical power tails for the signage.
Projecting signage to have a minimum 2440mm clearance or as otherwise required by Local Authority. Signage projecting over the public highway will require a licence or an amendment to an existing licence under section 177 of the Public Highways Act 1980. The consent of the property owner is required under the Town & Country Planning Act 1990 Town & Country Planning (Control of Advertisements) Regulations 2007.
Tile logo must always be at 45deg.
Single domino dot must always be at the top.
A small white @ is to be incorporated to the top right of the "Domino's" letter "s" and at the bottom of the tile logo.
All signage drawings must be submitted to the Domino's project manager for written approval prior to manufacture and installation. Any queries or discrepancies must be raised immediately with the Domino's project manager.

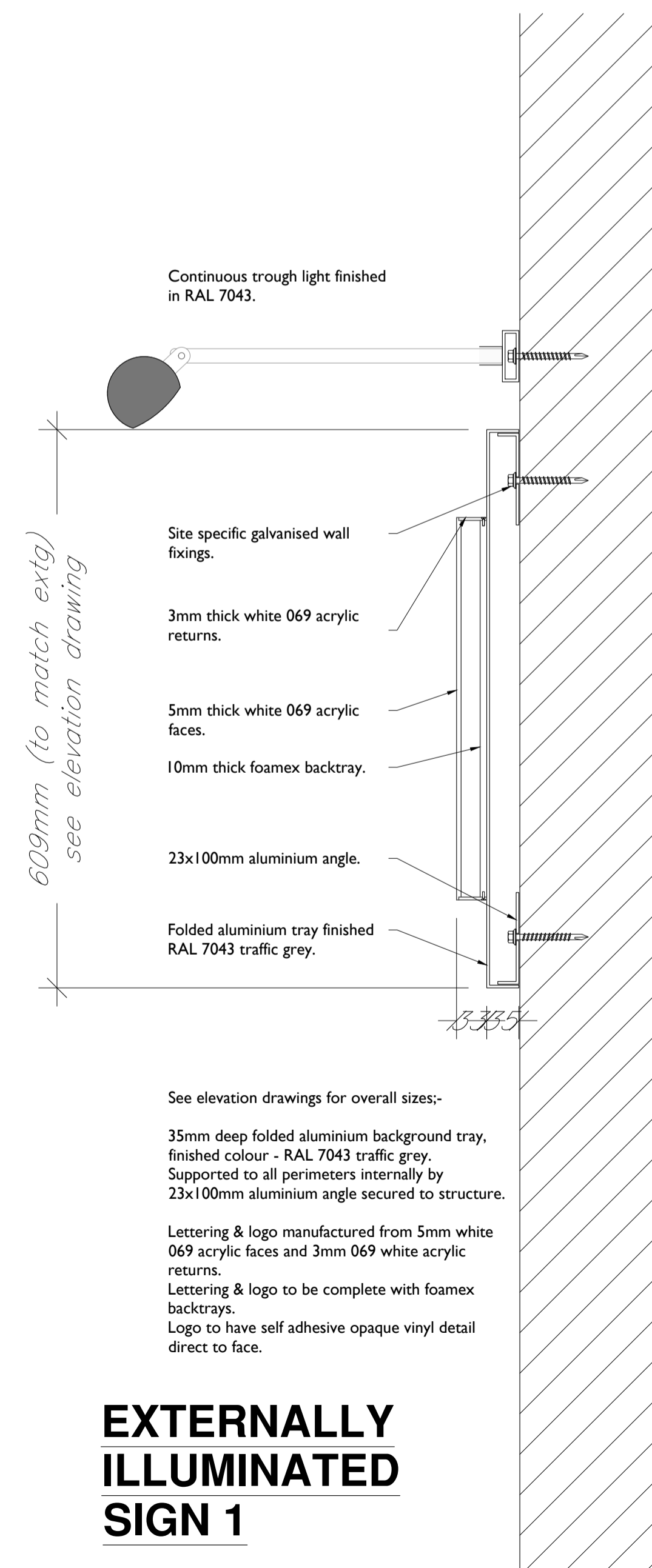
COLOUR KEY (Externally illuminated signage)

- IP 5730 Red Opaque Vinyl (Pantone 186C)
- IP 5743 Blue Opaque Vinyl (Pantone 307C)
- IP 5701 Gloss White Opaque Vinyl / White 069 acrylic
- RAL7043 Traffic Grey



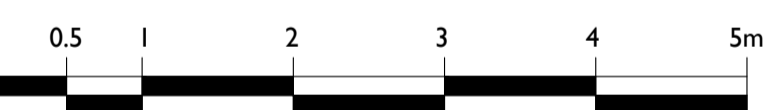
Double sided projection sign 750mm x 750mm comprising of 2 x 2mm thick aluminium panels fitted within a decorative timber framework and wrought iron scroll work bracket (designs to vary) powder coated RAL 7043 Traffic Grey, satin finish. Face panels to accept opaque vinyl graphics to face. IP 5701 Gloss White opaque vinyl @ bottom of tile, applied direct to face panels. Panels to be illuminated externally via overhead Ecolum trough light finished RAL 7043 Traffic Grey, satin finish.
Luminance = 450 candelas/m²

EXTERNALLY ILLUMINATED SIGN 2



See elevation drawings for overall sizes:-
35mm deep folded aluminium background tray, finished colour - RAL 7043 traffic grey. Supported to all perimeters internally by 23x100mm aluminium angle secured to structure.
Lettering & logo manufactured from 5mm white 069 acrylic faces and 3mm 069 white acrylic returns.
Lettering & logo to be complete with foamex backtrays.
Logo to have self adhesive opaque vinyl detail direct to face.

EXTERNALLY ILLUMINATED SIGN 1



HATTRELL LLP

Suite E KINGS COURT RAILWAY STREET ALTRINCHAM CHESHIRE WA14 2RD
TELEPHONE 0161 820 4207
e-mail: design@hattrell.co.uk / www.hattrell.co.uk

CLIENT
DPSK Ltd.

PROJECT
**27 Mere Street,
Diss,
Norfolk.
IP25 4AD**

DRAWING TITLE
Proposed Signage

SCALE @A1 DRAWN BY CHECKED DATE
1:50 & 1:5 ST -- Oct23

DRAWING No C5334-S07 REVISION -

Planning