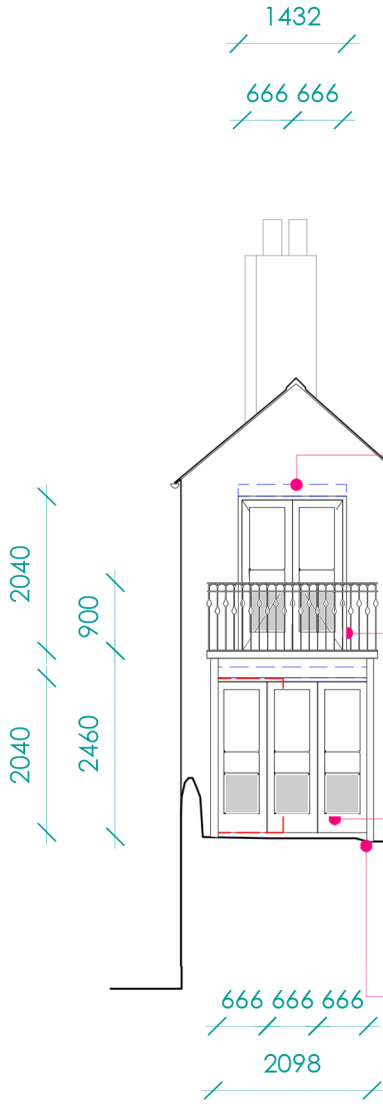


**GENERAL NOTES:**  
**GENERAL REPAIR AS REQUIRED TO ROOF TILES, LEAD FLASHINGS, RAINWATER GOODS, TIMBER CLADDING, RENDER AND BRICK POINTING.**

**GENERAL NOTES:**  
 ALL BLUE DOTTED LINES  
 NOTE PROPOSED  
 LINTELS TO SE  
 SPECIFICATION

**GENERAL NOTES:**  
 ALL RED DOTTED LINES  
 NOTE AREAS OF  
 DEMOLITION



New opening for new timber framed double glazed double doors (to be painted white) to garden elevation  
**New lintel needed to Structural Engineer specification**

New steel balcony with decorative metal gratings (to be painted black) to garden elevation  
**to Structural Engineer specification**

Enlarged opening and new timber framed double glazed sliding doors to garden elevation (to be painted white)  
**New lintel needed to Structural Engineer specification**

New steel balcony supports, painted black