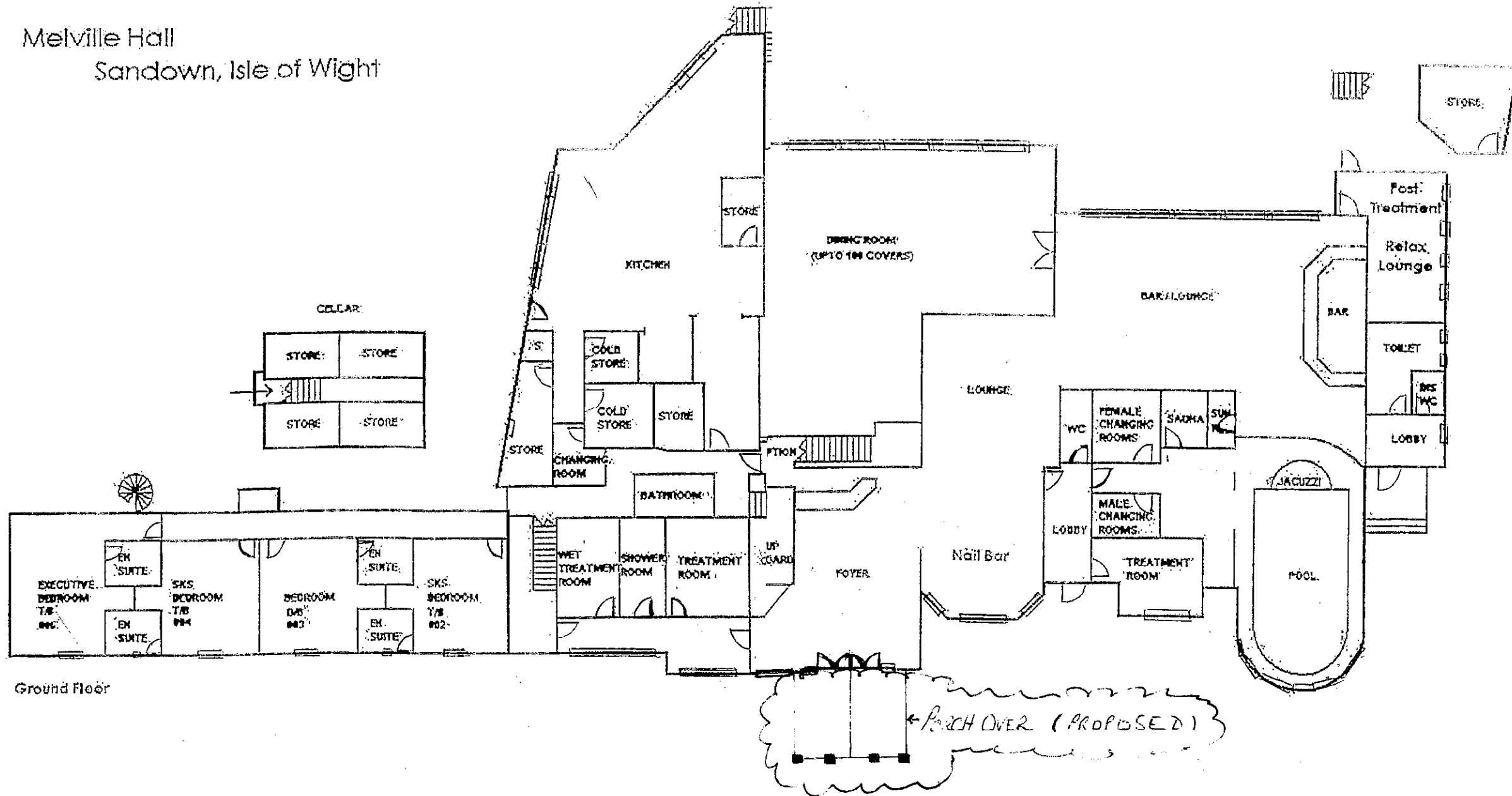


**GULLY HOWARD** Chartered Surveyors  
Commercial Property Agents



Melville Hall  
Sandown, Isle of Wight



Ground Floor

CD-FE	01	11/12/2022	Final Issue	P. Watt	D. Beckett	M. Skelton
Validity Status	Revision Number	Date	Description	Prepared	Checked	Approved
Revision Index						
MELVILLE HALL, MELVILLE STREET, SANDOWN, I.O.W. PO36 9DH SITE PLAN				Sheet 1/2	Scale 1:100	