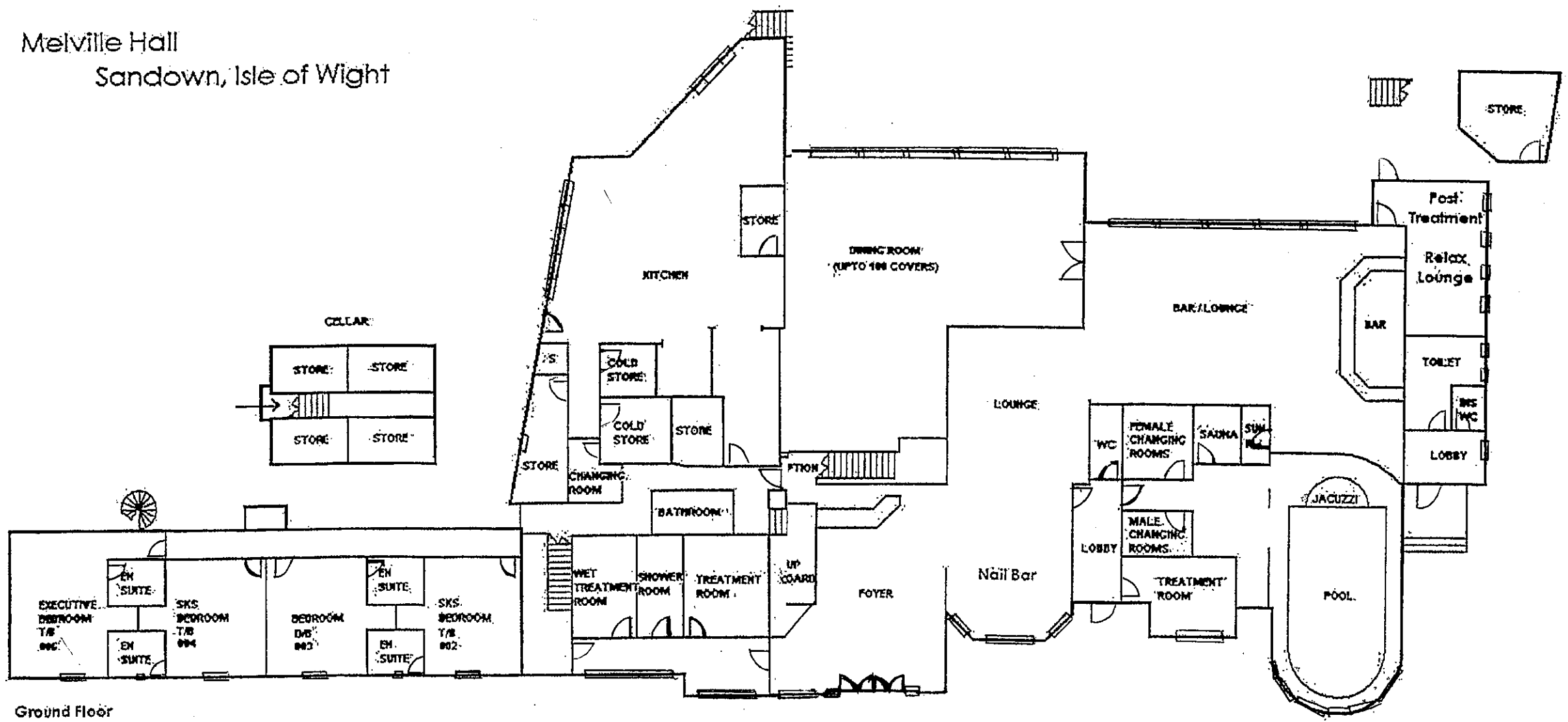


GULLY HOWARD Chartered Surveyors  
Commercial Property Agents



Melville Hall  
Sandown, Isle of Wight



Ground Floor

CD-FE	01	11/12/2022	Final Issue	P. Watt	D. Beckett	M. Skelton
Validity Status	Revision Number	Date	Description	Prepared	Checked	Approved
Revision Index				Sheet 1/2	Scale 1:100	
MELVILLE HALL, MELVILLE STREET, SANDOWN, I.O.W. PO36 9DH GROUND FLOOR PLAN <i>EXISTING</i>						