

# 17 Eaton Mews North London



Planning Compliance Report  
Report 27158.PCR.01- Rev. A

Derek and Sheila Watson  
17 Eaton Mews North  
London  
SW1X 8AR

Report 27158.PCR.01			
Revision History			
First Issue Date: 13/10/2023			
A	25/10/2023 Report amended due to new proposed plant location at roof level.	D	
B		E	
C		F	
Written by:		Checked by:	
<b>Gonçalo Lemos MIEEnvSc MIOA</b> Principal Acoustic Consultant		<b>Aidan Tolkien MIOA</b> Associate Director	
Approved by:			
<b>Gonçalo Lemos MIEEnvSc MIOA</b> Principal Acoustic Consultant		<b>Steven Leslie MIOA</b> Consultancy Manager	
<b>Disclaimer</b> KP Acoustics Ltd. has used reasonable skill and care to complete this technical document, within the terms of its brief and contract with the resources devoted to it by agreement with the client. We disclaim any responsibility to the client and others in respect of any matters outside the stated scope. This report is confidential to the client and we accept no responsibility to third parties to whom this report, or any part thereof, is made known. KP Acoustics Ltd. accepts no responsibility for data provided by other bodies and no legal liability arising from the use by other persons of data or opinions contained in this report. KP Acoustics Ltd. 2023			

## Contents

1.0	INTRODUCTION .....	1
2.0	SITE SURVEYS .....	1
2.1	Site Description .....	1
2.2	Environmental Noise Survey Procedure .....	2
2.3	Equipment.....	4
3.0	RESULTS.....	5
4.0	NOISE ASSESSMENT GUIDANCE.....	6
4.1	Local Authority Guidance.....	6
4.2	Noise Emissions Criterion .....	7
5.0	NOISE IMPACT ASSESSMENT .....	7
5.1	Proposed Plant Installations .....	7
5.2	Closest Noise Sensitive Receiver.....	7
5.3	Calculations .....	7
6.0	NOISE CONTROL MEASURES.....	8
6.1	Condenser Unit .....	8
6.2	Suitable Suppliers.....	8
6.3	Anti-Vibration Mounting Strategy .....	9
7.0	CONCLUSION.....	9

### List of Attachments

27158.TH1	Environmental Noise Time History
Appendix A	Glossary of Acoustics Terminology
Appendix B	Acoustic Calculations
Appendix C	Anti-Vibration Mounting Specification Reference Document

**1.0 INTRODUCTION**

KP Acoustics Ltd has been commissioned by Derek and Sheila Watson, 17 Eaton Mews North, London, SW1X 8AR, to undertake a noise impact assessment of a proposed plant unit installation serving the building at 17 Eaton Mews North, London, SW1X 8AR.

A 24 hour environmental noise survey has been undertaken on site and the background noise levels measured will be used to determine daytime and night-time noise emission criteria for a proposed Toshiba unit in agreement with the planning requirements of Westminster City Council (WCC).

This report presents the overall methodology and results from the environmental survey, followed by calculations to demonstrate the feasibility of the plant unit installation to satisfy the emissions criterion at the closest noise-sensitive receiver. Mitigation measures will be outlined as appropriate.

**2.0 SITE SURVEYS**

**2.1 Site Description**

As shown in Figure 2.1, the site is bounded by Eaton Place and residential buildings to the north, residential properties to the west and east, and Eaton Mews North to the south.

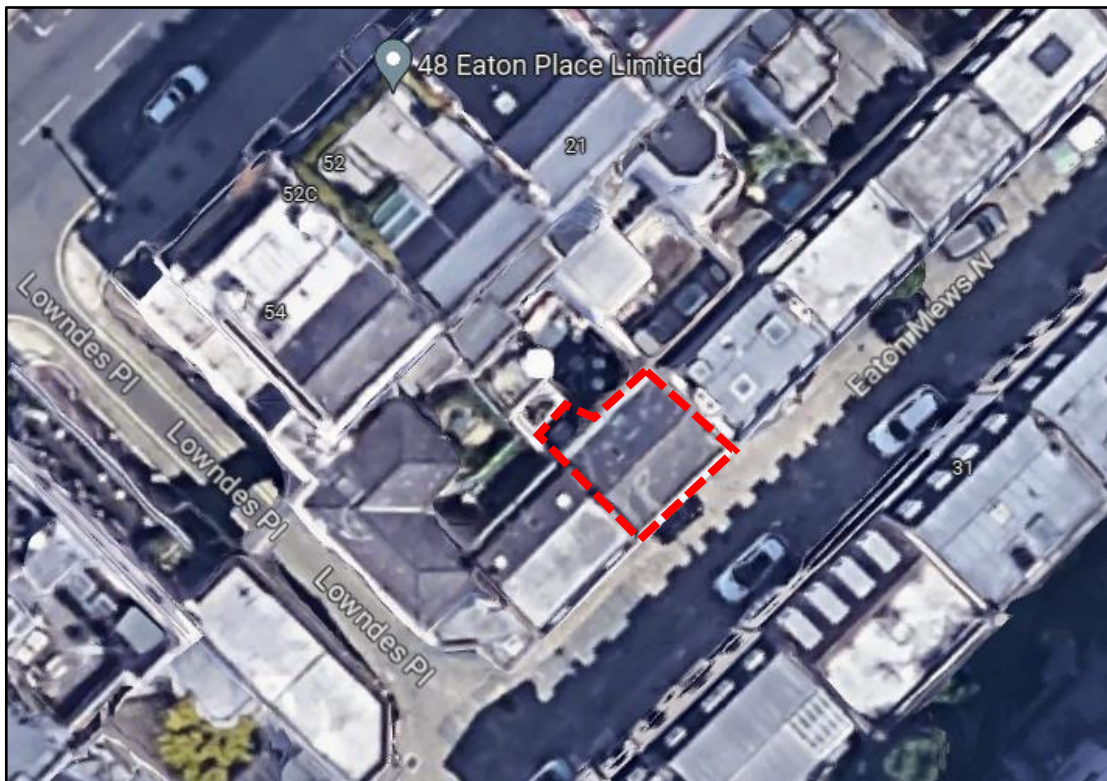





Figure 2.1 Site Location Plan (Image Source: Google Maps)

Initial inspection of the site revealed that the background noise profile at the monitoring location was typical of an urban cityscape environment, with the dominant source being road traffic noise from the surrounding roads and noise from construction activities taking place during the daytime within the existing building at 17 Eaton Mews North.

**2.2 Environmental Noise Survey Procedure**

Continuous automated monitoring was undertaken for the duration of the noise survey between 12:46 on 29/08/2023 and 13:01 on 30/08/2023.

The environmental noise measurement position, proposed plant installation locations, and the closest noise sensitive receiver relative to the plant installations are described within Table 2.1 and shown within Figure 2.2.

Icon	Descriptor	Location Description
	Noise Measurement Position 1	The microphone was installed on a window on the first floor of the rear façade, as shown in Figure 2.2. The microphone was located within 1.5 metres of the nearest surface and therefore includes local reflections.
	Nearest noise sensitive receptors	Rear 1 <sup>st</sup> Floor window of 52 Eaton Place, as shown in Figure 2.2
	Proposed plant installation location	Proposed plant installations are outlined in Section 5.1 and shown in Figure 2.3

**Table 2.1 Measurement position and description**

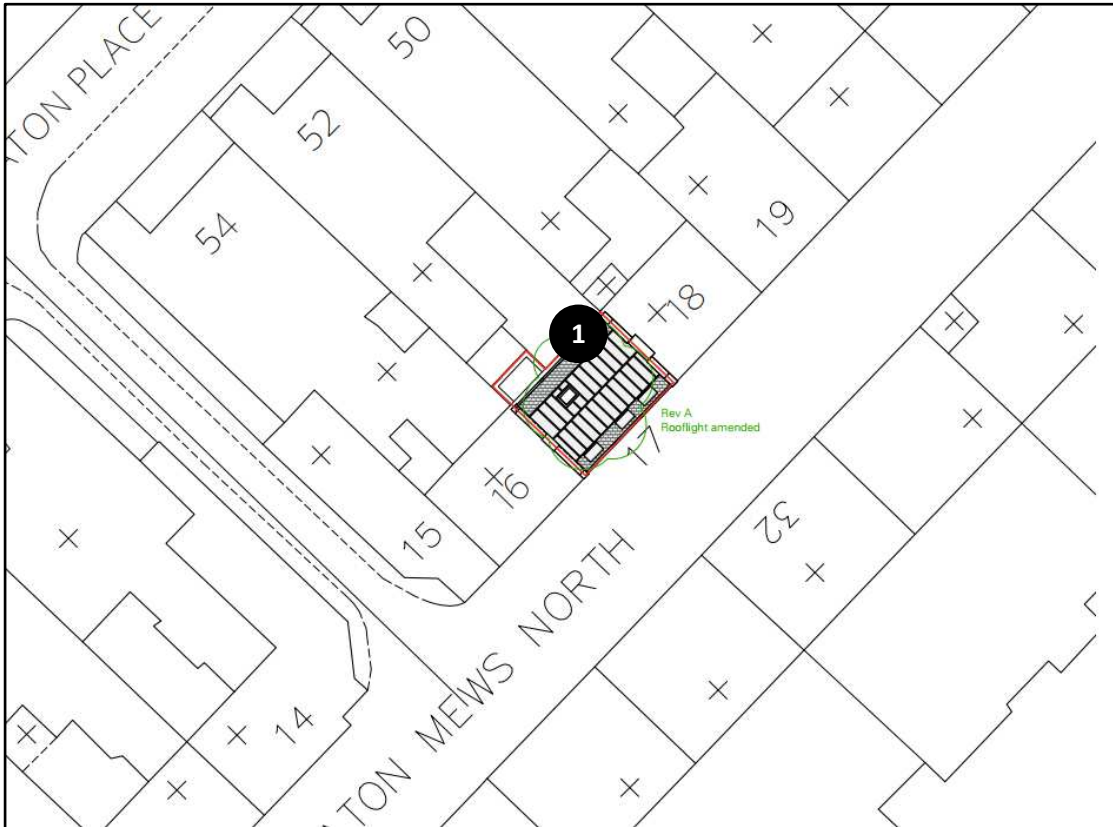


Figure 2.1 Site measurement position (Image Source: HEAT Architecture Limited)



Figure 2.2 Identified receiver.

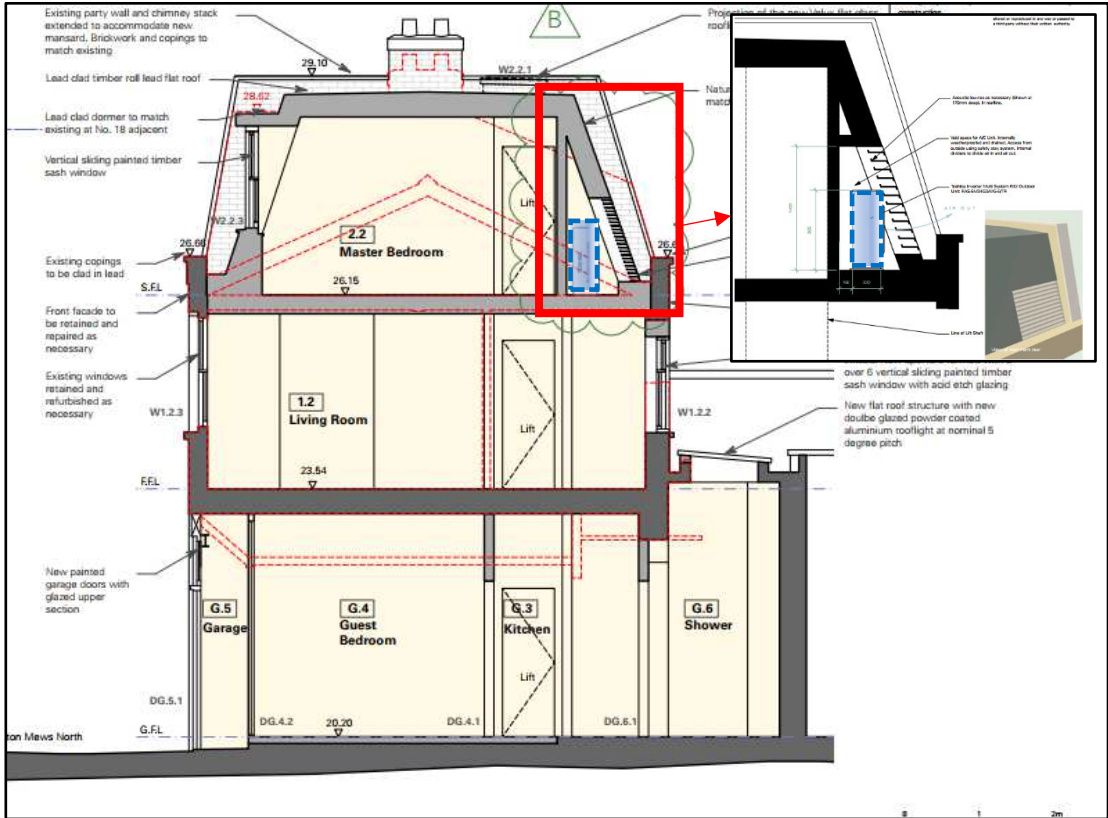


Figure 2.3 Proposed plant unit location (Image Source: HEAT Architecture Limited)

The choice of the position was based both on accessibility and on collecting representative noise data in relation to the nearest noise sensitive receiver and the proposed plant installation.

Weather conditions were generally dry with light winds and therefore suitable for the measurement of environmental noise. The measurement procedure complied with ISO 1996-2:2017 Acoustics ‘Description, measurement and assessment of environmental noise - Part 2: Determination of environmental noise levels’.

### 2.3 Equipment

The equipment calibration was verified before and after use and no abnormalities were observed. The equipment used is described within Table 2.2.

Measurement instrumentation		Serial no.	Date	Cert no.
Noise Kit 24	NTI Audio XL2 Class 1 Sound Level Meter	A2A-21175-E0	21/07/2022	UK-22-066
	Free-field microphone NTI Acoustics MC230A	A23577		
	Preamp NTI Acoustics MA220	10999		
	NTI Audio External Weatherproof Shroud	-	-	-
B&K Type 4231 Class 1 Calibrator		2147411	05/06/2023	UCRT23/1739

**Table 2.2 Measurement instrumentation**

### 3.0 RESULTS

The  $L_{Aeq: 5min}$ ,  $L_{Amax: 5min}$ ,  $L_{A10: 5min}$  and  $L_{A90: 5min}$  acoustic parameters were measured throughout the duration of the survey. Measured levels are shown as a time history in Figure 27158.TH1.

Minimum background noise levels and external ambient  $L_{Aeq,T}$  noise levels are shown in Table 3.1 for daytime and night-time.

Time Period	Minimum background noise level $L_{A90}$ dB(A)	Average ambient noise level $L_{Aeq,T}$ dB(A)
Daytime (07:00-23:00)	35	57
Night-time (23:00-07:00)	32	41

**Table 3.1 Minimum background noise levels and average ambient noise levels**

Please note that measurements at Noise Measurement Position is located at a distance less than 1.5 metres from the nearest reflective surface and therefore a 3dB correction has been applied to the results in Table 3.1 to obtain a free-field measurement as per ISO1996 Part 2.

It should be noted that the daytime noise profile in this area has been impacted by temporary construction activities generated within the existing building at 17 Eaton Mews North. Consequently, it is anticipated that noise levels measured during the daytime will not exceed WHO guideline levels once these temporary construction activities are completed.



## 4.0 NOISE ASSESSMENT GUIDANCE

### 4.1 Local Authority Guidance

The guidance provided in Westminster City Council’s *City Plan: 2019-2040 Draft Technical Guidance Note (November 2019)* states the following with regards to sources of noise and vibration:

**“2.4 Minimising noise from plant machinery and internal/external activities**

*Development including plant or machinery, or contains activities that cause noise from amplified and unamplified music or human voices both internally and externally should achieve the following standards:”*

Existing External Ambient Noise Level	Tonal or Intermittent Noise/ Noise Source	Sound Emission Level that should not be Exceeded at the nearest Noise Sensitive Receptor
Exceed WHO Guideline levels. $L_{Aeq}$ 55 dB over periods of daytime (07.00-23.00hrs) and $L_{Aeq}$ 45 dB at night-time (23.00-07.00hrs).	Does not contain tones or intermittent noise sufficient to attract attention.	10dB below the minimum external background noise level
	Contains tones or be intermittent noise sufficient to attract attention.	15dB below the minimum external background noise level
	Noise emitted from emergency plant or emergency life supporting generators.	10dB above the lowest background noise level within a 24-hour period
<b>Does not exceed WHO Guideline levels.</b> $L_{Aeq}$ <b>55 dB over periods of daytime (07.00-23.00hrs) and <math>L_{Aeq}</math> 45 dB at night-time (23.00-07.00hrs).</b>	<b>Does not contain tones or intermittent noise sufficient to attract attention.</b>	<b>5dB below the minimum external background noise level</b>
	Contains tones or be intermittent noise sufficient to attract attention.	10dB below the minimum external background noise level
	Noise emitted from emergency plant or emergency life supporting generators.	10dB above the lowest background noise level within a 24-hour period
Below 30 dB $L_{A90, 15min}$ at the nearest noise sensitive receptors Both daytime (07.00-23.00hrs) and night-time (23.00-07.00hrs)	Noise contains and/or does not contain tones or intermittent noise	Site specific standards that avoid noise disturbance to nearest noise sensitive receptors may be considered

**Table 4.1 Noise criteria for plant machinery as provided by Westminster City Council’s Draft Noise Technical Guidance Note**

**4.2 Noise Emissions Criterion**

The proposed plant unit could be used at any time of the day or night. Considering which of the conditions set by the guidance shown in Table 4.1 are met by the measured noise levels, the noise criterion has been set as shown in Table 4.2 in order to comply with the above requirements.

Time Period	Maximum Plant Noise Emissions Criterion at Nearest Residential Receiver
Night-time (23:00 to 07:00)	27 dB(A)

**Table 4.2 Proposed noise emissions criterion**

**5.0 NOISE IMPACT ASSESSMENT**

**5.1 Proposed Plant Installations**

It is understood that the proposed plant installation is comprised of the following units:

- 1 No. Toshiba RAS-5M34G3AVG-E/TR Air Conditioning Unit

The proposed installation location for the proposed Toshiba unit will be at rear first floor flat roof, as shown in Figure 2.2 above.

The noise emission level as provided by the manufacturer for the unit is shown in Table 5.1.

Unit	Descriptor	Octave Frequency Band (Hz)								Overall (dBA)
		63	125	250	500	1k	2k	4k	8k	
Toshiba RAS-5M34G3AVG-E/TR (Heating mode)	SPL@1m (dB)	61	58	60	53	51	47	43	36	57

**Table 5.1 Plant Unit Noise Emission Levels as provided by the manufacturer**

**5.2 Closest Noise Sensitive Receiver**

The closest noise sensitive receiver to the proposed installation location has been identified as being a rear first floor residential window of 52 Eaton Place, located approximately 5 metres from the proposed plant installation location at roof level, as shown in Figure 2.3.

**5.3 Calculations**

Taking all acoustic corrections into consideration, the noise level contribution expected at the closest residential window from the proposed plant unit would be as shown in Table 5.2. Detailed calculations are shown in Appendix B.

Receiver	Criterion	Noise Level at 1m From the Closest Noise Sensitive Window
Rear 1st Floor window of 52 Eaton Place, as shown in Figure 2.2	27dB(A)	27dB(A)

**Table 5.2 Predicted noise level and criterion at nearest noise sensitive location**

As shown in Appendix B and Table 5.2, transmission of noise to the nearest sensitive windows due to the effects of the proposed plant unit installation satisfies the emissions criterion of Westminster City Council, providing that the mitigation measures outlined in Section 6 are implemented.

**6.0 NOISE CONTROL MEASURES**

In order to achieve the specific sound level and subsequent rating level shown in the assessment above, the following noise control strategy should be adopted.

**6.1 Condenser Unit**

To control the noise emissions from the proposed 1No.Toshiba RAS-5M34G3AVG-E/TR unit, we would recommend that a plant enclosure is installed which should provide the minimum insertion loss levels shown in Table 6.2.

Unit	Insertion Loss Levels (dB) in each Octave Frequency Band							
	63Hz	125Hz	250Hz	500Hz	1kHz	2kHz	4kHz	8kHz
Louvres of acoustic enclosure	5	6	12	15	17	15	9	5

**Table 6.1 Insertion loss figures to be provided by acoustic enclosure**

**6.2 Suitable Suppliers**

We would recommend the following suppliers of the aforementioned enclosure:

- Environ
- IAC
- Waterloo Acoustics
- Allaway Acoustics
- Wakefield Acoustics

### **6.3 Anti-Vibration Mounting Strategy**

In the case of all plant units, appropriate anti-vibration mounts should be installed in order to ensure that vibrations do not give rise to structure-borne noise. Appendix C outlines detailed advice in order to ensure that the system installer selects the appropriate anti-vibration mount for the installation.

It is the supplier's responsibility to ensure that all mountings offered are suitable for the loads, operating and environmental conditions which will prevail.

## **7.0 CONCLUSION**

An environmental noise survey has been undertaken at 17 Eaton Mews North, London, SW1X 8AR, by KP Acoustics Ltd between 12:46 on 29/08/2023 and 13:01 on 30/08/2023. The results of the survey have enabled criteria to be set for noise emissions.

Using manufacturer noise data, noise levels are predicted at the nearby noise sensitive receivers for compliance with current requirements.

Calculations show that noise emissions from the proposed plant unit installation would meet the requirements of Westminster City Council, providing that the mitigation measures outlined in Section 6 are implemented.

17 Eaton Mews North, London, SW1X 8AR - Position 1  
Environmental Time History  
29/08/2023 to 30/08/2023

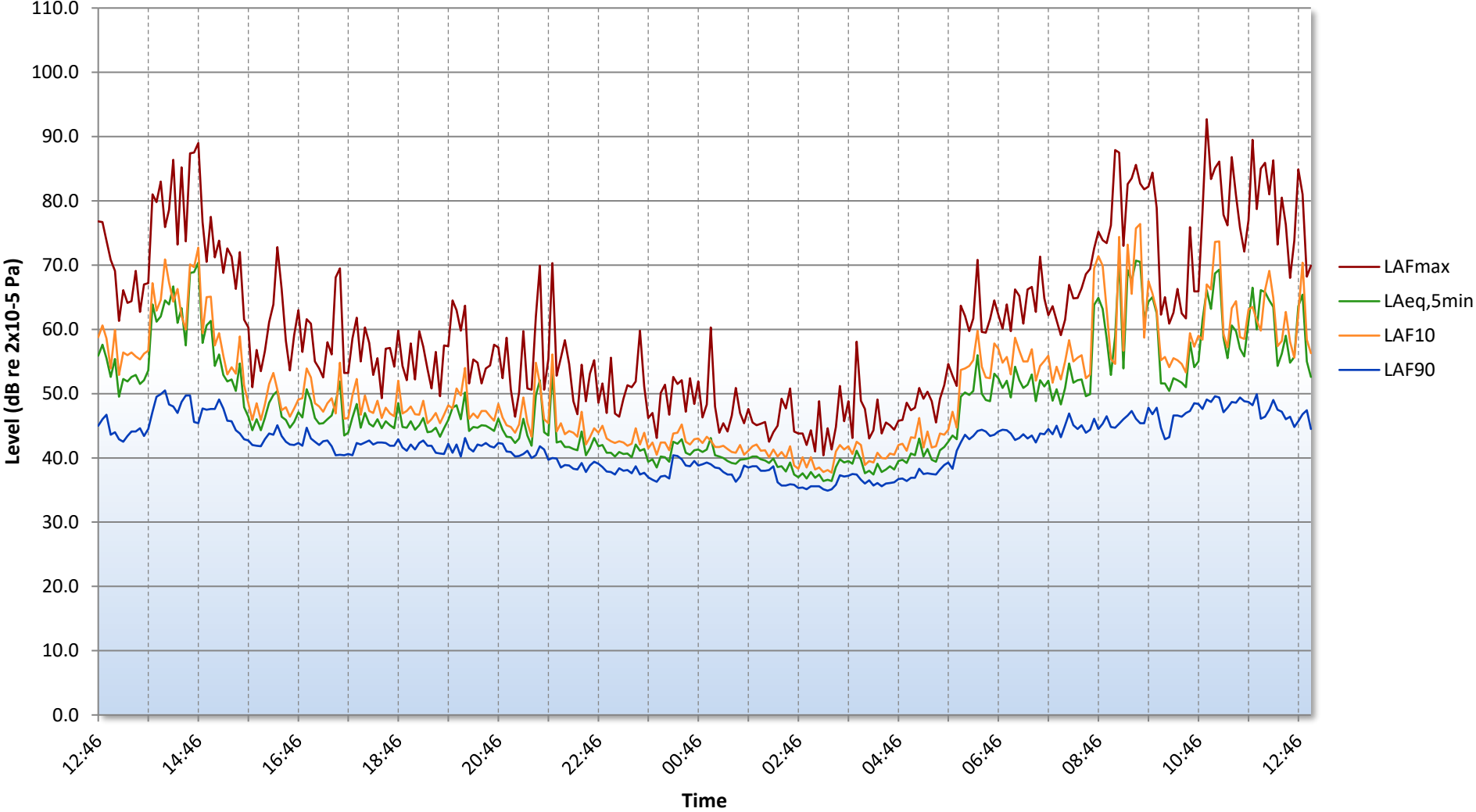


Figure 27158.TH1

## GENERAL ACOUSTIC TERMINOLOGY

### Decibel scale - dB

In practice, when sound intensity or sound pressure is measured, a logarithmic scale is used in which the unit is the 'decibel', dB. This is derived from the human auditory system, where the dynamic range of human hearing is so large, in the order of  $10^{13}$  units, that only a logarithmic scale is the sensible solution for displaying such a range.

### Decibel scale, 'A' weighted - dB(A)

The human ear is less sensitive at frequency extremes, below 125Hz and above 16Khz. A sound level meter models the ears variable sensitivity to sound at different frequencies. This is achieved by building a filter into the Sound Level Meter with a similar frequency response to that of the ear, an A-weighted filter where the unit is dB(A).

### $L_{eq}$

The sound from noise sources often fluctuates widely during a given period of time. An average value can be measured, the equivalent sound pressure level  $L_{eq}$ . The  $L_{eq}$  is the equivalent sound level which would deliver the same sound energy as the actual fluctuating sound measured in the same time period.

### $L_{10}$

This is the level exceeded for no more than 10% of the time. This parameter is often used as a "not to exceed" criterion for noise.

### $L_{90}$

This is the level exceeded for no more than 90% of the time. This parameter is often used as a descriptor of "background noise" for environmental impact studies.

### $L_{max}$

This is the maximum sound pressure level that has been measured over a period.

### Octave Bands

In order to completely determine the composition of a sound it is necessary to determine the sound level at each frequency individually. Usually, values are stated in octave bands. The audible frequency region is divided into 11 such octave bands whose centre frequencies are defined in accordance with international standards. These centre frequencies are: 16, 31.5, 63, 125, 250, 500, 1000, 2000, 4000, 8000 and 16000 Hertz.

Environmental noise terms are defined in BS7445, *Description and Measurement of Environmental Noise*.

## APPLIED ACOUSTIC TERMINOLOGY

### Addition of noise from several sources

Noise from different sound sources combines to produce a sound level higher than that from any individual source. Two equally intense sound sources operating together produce a sound level which is 3dB higher than a single source and 4 sources produce a 6dB higher sound level.

### Attenuation by distance

Sound which propagates from a point source in free air attenuates by 6dB for each doubling of distance from the noise source. Sound energy from line sources (e.g. stream of cars) drops off by 3dB for each doubling of distance.

### Subjective impression of noise

Hearing perception is highly individualised. Sensitivity to noise also depends on frequency content, time of occurrence, duration of sound and psychological factors such as emotion and expectations. The following table is a guide to explain increases or decreases in sound levels for many scenarios.

Change in sound level (dB)	Change in perceived loudness
1	Imperceptible
3	Just barely perceptible
6	Clearly noticeable
10	About twice as loud

### Transmission path(s)

The transmission path is the path the sound takes from the source to the receiver. Where multiple paths exist in parallel, the reduction in each path should be calculated and summed at the receiving point. Outdoor barriers can block transmission paths, for example traffic noise. The effectiveness of barriers is dependent on factors such as its distance from the noise source and the receiver, its height and construction.

### Ground-borne vibration

In addition to airborne noise levels caused by transportation, construction, and industrial sources there is also the generation of ground-borne vibration to consider. This can lead to structure-borne noise, perceptible vibration, or in rare cases, building damage.

### Sound insulation - Absorption within porous materials

Upon encountering a porous material, sound energy is absorbed. Porous materials which are intended to absorb sound are known as absorbents, and usually absorb 50 to 90% of the energy and are frequency dependent. Some are designed to absorb low frequencies, some for high frequencies and more exotic designs being able to absorb very wide ranges of frequencies. The energy is converted into both mechanical movement and heat within the material; both the stiffness and mass of panels affect the sound insulation performance.

## APPENDIX B

### 17 Eaton Mews North, London, SW1X 8AR

#### PLANT NOISE EMISSIONS CALCULATIONS

Source: 1No.Toshiba unit (Heating mode) Receiver: Rear 1st Floor window of 52 Eaton Place, as shown in Figure 2.2	Frequency, Hz								dB(A)
	63	125	250	500	1k	2k	4k	8k	
1No.Toshiba RAS-5M34G3AVG-E/TR (Sound Pressure Level @1m)	61	58	60	53	51	47	43	36	57
Correction to SWL, dB	8	8	8	8	8	8	8	8	
Calculated Reverberation time (0.2s), dB	-7	-7	-7	-7	-7	-7	-7	-7	
Plant Room volume (0.5m <sup>3</sup> ), dB	17	17	17	17	17	17	17	17	
<b>Reverberant Sound Power Level in Plant Room</b>	<b>79</b>	<b>76</b>	<b>78</b>	<b>71</b>	<b>69</b>	<b>65</b>	<b>61</b>	<b>54</b>	<b>75</b>
Area of opening (0.6m <sup>2</sup> ), dB	-8	-8	-8	-8	-8	-8	-8	-8	
Minimum attenuation provided by acoustic louvre, dB	-5	-6	-12	-16	-17	-15	-9	-5	
<b>Sound Power Level at Louvre</b>	<b>66</b>	<b>62</b>	<b>58</b>	<b>47</b>	<b>44</b>	<b>42</b>	<b>44</b>	<b>41</b>	<b>54</b>
Correction to SPL,dB	-8	-8	-8	-8	-8	-8	-8	-8	
Directivity correction, dB	-1	-2	-2	-4	-5	-7	-13	-15	
Minimum attenuation provided by distance (5.5m), dB	-15	-15	-15	-15	-15	-15	-15	-15	
<b>Total Rating Noise Level of proposed Plant Unit Installation at Receiver</b>	<b>42</b>	<b>37</b>	<b>33</b>	<b>20</b>	<b>16</b>	<b>12</b>	<b>8</b>	<b>3</b>	<b>27</b>

Design Criterion	27
------------------	----



## ANTI-VIBRATION MOUNTING SPECIFICATION REFERENCE DOCUMENT

### 1.0 General

- 1.1 All mountings shall provide the static deflection, under the equipment weight, shown in the schedules. Mounting selection should allow for any eccentric load distribution or torque reaction, so that the design deflection is achieved on all mountings under the equipment, under operating conditions.
- 1.2 It is the supplier's responsibility to ensure that all mountings offered are suitable for the loads, operating and environmental conditions which will prevail. Particular attention should be paid to mountings which will be exposed to atmospheric conditions to prevent corrosion.
- 1.3 All mountings shall be colour coded, or otherwise marked, to indicate their load capacity, to facilitate identification during installation.

Where use of resilient supports allows omission of pipe flexible connections for vibration/noise isolation, it shall be the Mechanical Service Consultant's or Contractor's responsibility to decide whether such devices are required to compensate for misalignment or thermal strain.

### 2.1 Type A Mounting (Caged Spring Type)

- 2.1.1 Each mounting shall consist of cast or fabricated telescopic top and bottom housings enclosing one or more helical steel springs as the principle isolation elements, and shall incorporate a built-in levelling device. The housing should be designed to permit visual inspection of the springs after installation, i.e. the spring must not be totally enclosed.
- 2.1.2 The springs shall have an outside diameter of not less than 75% of the operating height, and be selected to have at least 50% overload capacity before becoming coil-bound.
- 2.1.3 The bottom plate of each mounting shall have bonded to it a rubber/neoprene pad designed to attenuate any high frequency energy transmitted by the springs.
- 2.1.4 Mountings incorporating snubbers or restraining devices shall be designed so that the snubbing, damping or restraining mechanism is capable of being adjusted to have no significant effect during the normal running of the isolated machine.
- 2.1.5 All nuts, bolts or other elements used for adjustment of a mounting shall incorporate locking mechanisms to prevent the isolator going out of adjustment as a result of vibration or accidental or unauthorised tampering.

### 2.2 Type B Mounting (Open Spring Type)

- 2.2.1 Each mounting shall consist of one or more helical steel springs as the principal isolation elements, and shall incorporate a built-in levelling device.
- 2.2.2 The springs shall be fixed or otherwise securely located to cast or fabricated top and bottom plates, shall have an outside diameter of not less than 75% of the operating height, and shall be selected to have at least 50% overload capacity before becoming coil-bound.
- 2.2.3 The bottom plate shall have bonded to it a rubber/ neoprene pad designed to attenuate any high frequency energy transmitted by the springs.

## 2.3 Type C Mounting (Rubber/Neoprene Type)

Each mounting shall consist of a steel top plate and base plate completely embedded in oil resistant rubber/neoprene. Each mounting shall be capable of being fitted with a levelling device, and should have bolt holes in the base plate and a threaded metal insert in the top plate so that they can be bolted to the floor and equipment where required.

## 3.0 Plant Bases

### 3.1 Type A Bases (A.V. Rails)

An A.V. Rail shall comprise a steel beam with two or more height-saving brackets. The steel sections must be sufficiently rigid to prevent undue strain in the equipment and if necessary should be checked by the Structural Engineer.

### 3.2 Type B Bases (Steel Plant Bases)

Steel plant bases shall comprise an all-welded steel framework of sufficient rigidity to provide adequate support for the equipment, and fitted with isolator height saving brackets. The frame depth shall be approximately 1/10 of the longest dimension of the equipment with a minimum of 150 mm. This form of base may be used as a composite A.V. rail system.

### 3.3 Type C Bases (Concrete Inertia Base: for use with steel springs)

These shall consist of an all-welded steel pouring frame-work with height saving brackets, and a frame depth of approximately 1/12 of the longest dimension of the equipment, with a minimum of 100 mm. The bottom of the pouring frame should be blanked off, and concrete (2300 kg/m<sup>3</sup>) poured in over steel reinforcing rods positioned 35 mm above the bottom. The inertia base should be sufficiently large to provide support for all parts of the equipment, including any components which over-hang the equipment base, such as suction and discharge elbows on centrifugal pumps.