

SITE PHOTOGRAPHS OF MARTINS FARMHOUSE, HIGH STREET, WIDDINGTON, SAFFRON WALDEN, CB11 3SG.

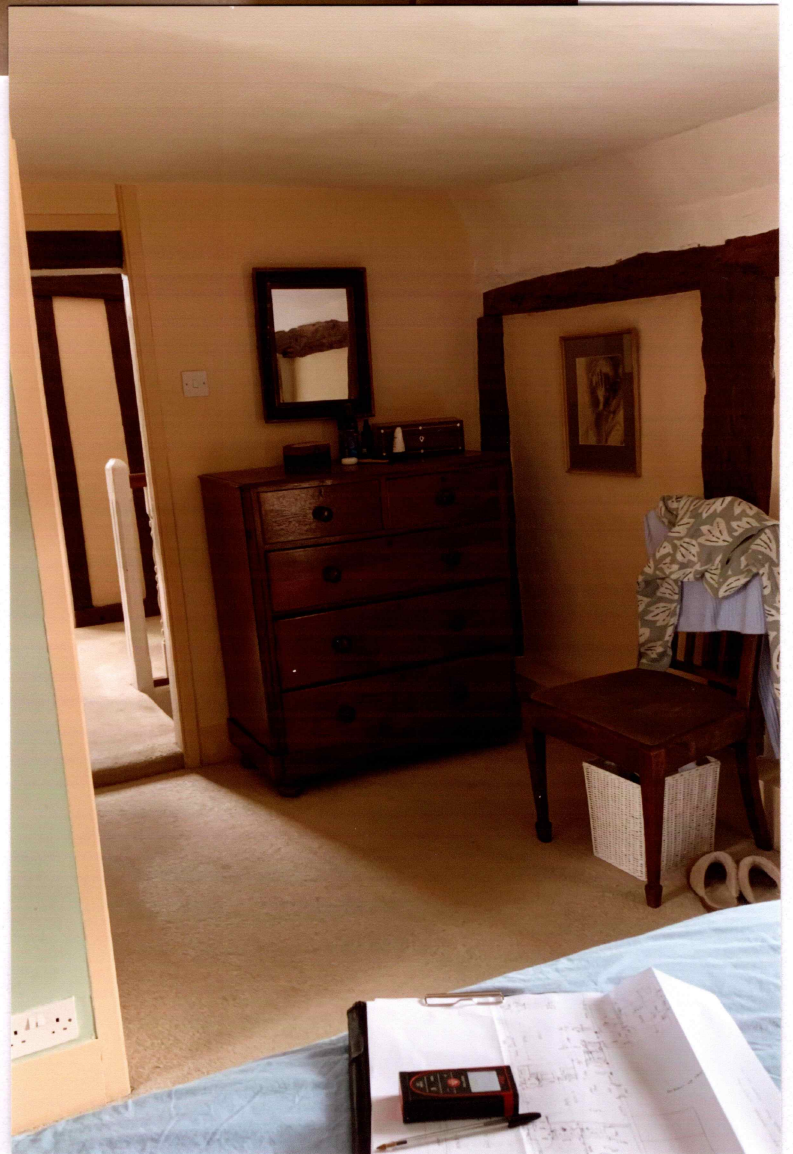
View of the Rear of the existing house from the garden.



View of the back elevation of the house from the drive behind the garden.



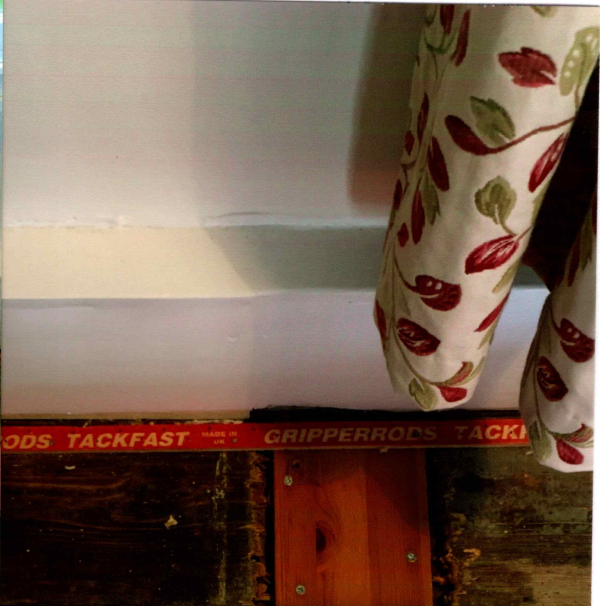
View of the cupboard to be removed to expose the chimney at first floor level in bedroom 2.



View of the corner of bedroom 2 where the ensuite shower room is to be added.



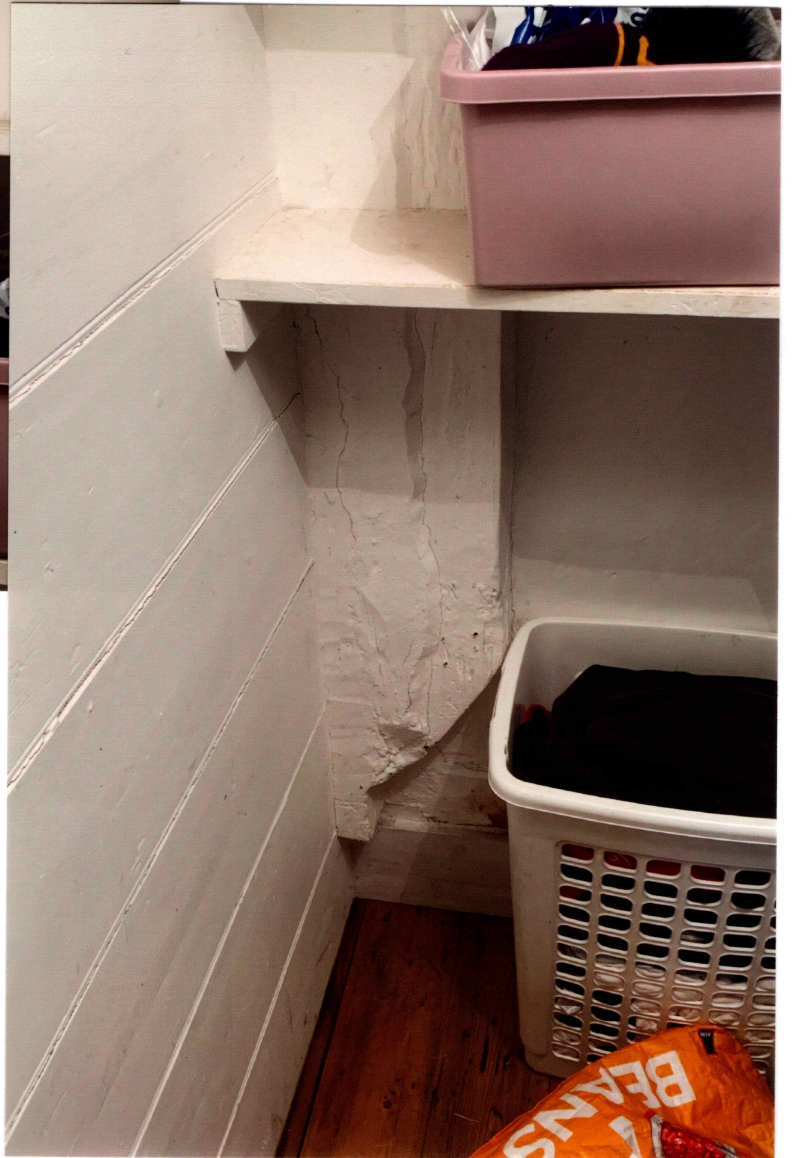
View of the bedroom external wall where a basin was located previously. The repair to the floor boards shows where the waste pipe went through the floor.



Close -up view of the floor boards in the bedroom where the basin waste went through the floor.



View of the existing ground floor store corner looking towards the ceiling, where the SVP will be located, if situated internally.



View of the existing ground floor store corner looking towards the floor, where the SVP will be located, if situated internally.

View of the corner of bedroom 2 where the SVP will be located. **No** structural historic timbers will be cut to fit the ensuite SVP.

