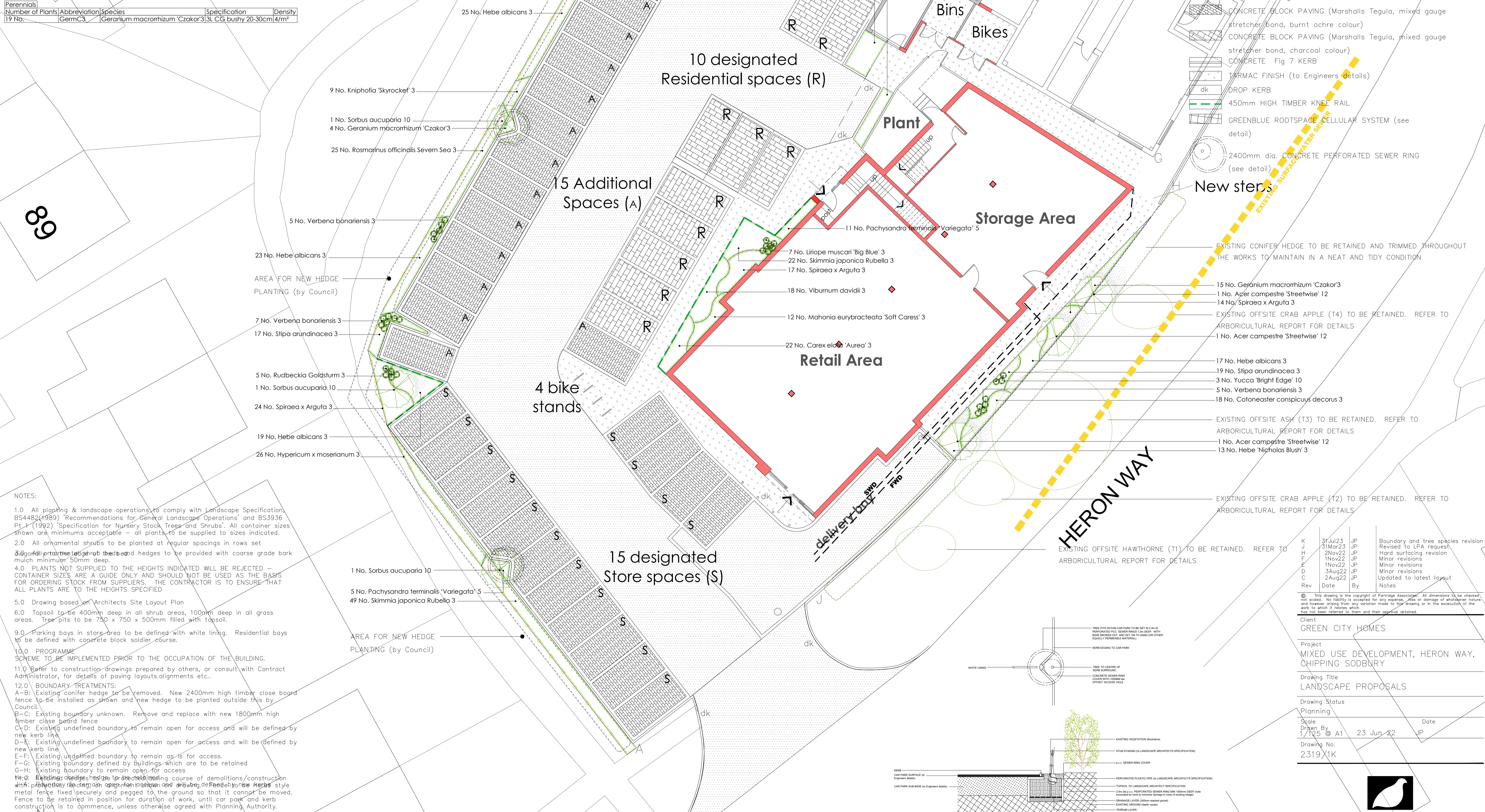


PLANT SCHEDULE				
Trees				
Number	Abbreviation	Species	Specification	Density
3 No.	AcCS12	Acer campestre 'Streetwise' 12	12-14cm clear stem RB	Counted
3 No.	SU10	Sorbus aucuparia 10	SEL STD 10-12cm RB	Counted
Shrubs				
Number	Abbreviation	Species	Specification	Density
18 No.	COD3	Cotoneaster conspicuus decorus	30-40 3L	5/m ²
31 No.	HeNB3	Hebe 'Nicholas Blush' 3	30-40cm 3L CG bushy	4/m ²
84 No.	HEA3	Hebe albicans 3	25-30 3L	4/m ²
26 No.	HYM3	Hypericum x moserianum 3	30-40; 3L	4/m ²
12 No.	MaheurSC3	Mahonia eurybracteata 'Soft Caress' 3	3L CG 30-40cm high bushy	4/m ²
16 No.	PAC5	Pachysandra terminalis 'Variegata' 5	20-30 5L	5/m ²
25 No.	RSS3	Rosmarinus officinalis 'Severn Sea' 3	20-30 3L	4/m ²
71 No.	SKR3	Skimmia japonica Rubella 3	3L ca	4/m ²
61 No.	SPX3	Spiraea x Arguta 3	3L CG bushy	4/m ²
31 No.	VID3	Viburnum davidii 3	30-40 3L	4/m ²
3 No.	YBE10	Yucca 'Bright Edge' 10	40-50cm 10L	Counted
Herbaceous				
Number	Abbreviation	Species	Specification	Density
22 No.	CareAu3	Carex elata 'Aurea' 3	3L CG 30-40cm high more than 50 breaks	6/m ²
9 No.	KnISky3	Kniphofia 'Skyrocket' 3	3L CG min 7 breaks	5/m ²
7 No.	LiriBB3	Liriope muscari 'Big Blue' 3	3L CG min 15 breaks	Counted
5 No.	Rudbeckia Goldsturm 3	Rudbeckia Goldsturm 3	3L CG min 7 breaks	Counted
54 No.	StiA3	Stipa arundinacea 3	3L CG 30 breaks	5/m ²
22 No.	Verban3	Verbena bonariensis 3	3L CG min 7 breaks	Counted
Perennials				
Number of Plants	Abbreviation	Species	Specification	Density
19 No.	GermCS	Geranium macrorrhizum 'Czokor' 3	3L CG bushy 20-30cm	4/m ²

LEGEND	
EXISTING FEATURES	
[Symbol]	TREE TO BE RETAINED (Refer to Arboricultural Report for details of protection and tree works)
[Symbol]	HEDGE TO BE RETAINED
[Symbol]	HEDGE TO BE REMOVED
PROPOSED FEATURES	
[Symbol]	DECAIDUOUS TREE
[Symbol]	ORNAMENTAL SHRUBS
[Symbol]	ACCENT SPECIMEN PLANT
[Symbol]	HEDGE
[Symbol]	2.4m HIGH TIMBER CLOSE BOARD FENCE
[Symbol]	TARMAC (to Engineers specification)
[Symbol]	CONCRETE BLOCK PAVING (Marshalls Tegula, mixed gauge stretcher bond, burnt ochre colour)
[Symbol]	CONCRETE BLOCK PAVING (Marshalls Tegula, mixed gauge stretcher bond, charcoal colour)
[Symbol]	CONCRETE Fig 7 KERB
[Symbol]	TARMAC FINISH (to Engineers details)
[Symbol]	DROP KERB
[Symbol]	450mm HIGH TIMBER KNEE RAIL
[Symbol]	GREENBLUE ROOTSPACE CELLULAR SYSTEM (see detail)
[Symbol]	2400mm dia. CONCRETE PERFORATED SEWER RING (see detail)



NOTES:

- All planting & landscape operations to comply with Landscape Specification, BS4482(1989) 'Recommendations for General Landscape Operations' and BS3936 Pt 1 (1992) 'Specification for Nursery Stock Trees and Shrubs'. All container sizes shown are minimums acceptable - all plants to be supplied to sizes indicated.
- All ornamental shrubs to be planted at regular spacings in rows set 300mm apart.
- All trees to be planted at regular spacings in rows set 300mm apart.
- Plants not supplied to the heights indicated will be rejected - CONTAINER SIZES ARE A GUIDE ONLY AND SHOULD NOT BE USED AS THE BASIS FOR ORDERING STOCK FROM SUPPLIERS. THE CONTRACTOR IS TO ENSURE THAT ALL PLANTS ARE TO THE HEIGHTS SPECIFIED.
- Drawing based on Architects Site Layout Plan.
- Topsoil to be 400mm deep in all shrub areas, 100mm deep in all grass areas. Tree pits to be 750 x 750 x 500mm filled with topsoil.
- Parking bays in store area to be defined with white lining. Residential bays to be defined with concrete block soldier course.
- PROGRAMME SCHEME TO BE IMPLEMENTED PRIOR TO THE OCCUPATION OF THE BUILDING.**
- Refer to construction drawings prepared by others, or consult with Contract Administrator, for details of paving layouts, alignments etc..
- BOUNDARY TREATMENTS:**
 A-B: Existing conifer hedge to be removed. New 2400mm high timber close board fence to be installed as shown and new hedge to be planted outside this by Council.
 B-C: Existing boundary unknown. Remove and replace with new 1800mm high timber close board fence.
 C-D: Existing undefined boundary to remain open for access and will be defined by new kerb line.
 D-E: Existing undefined boundary to remain open for access and will be defined by new kerb line.
 E-F: Existing undefined boundary to remain as-is for access.
 F-G: Existing boundary defined by buildings which are to be retained.
 G-H: Existing boundary to remain open for access.
 H-I: Existing boundary to remain open for access.
 I-J: Existing boundary to remain open for access.
- Existing conifer hedge to be removed. New 2400mm high timber close board fence to be installed as shown and new hedge to be planted outside this by Council.
- Existing boundary unknown. Remove and replace with new 1800mm high timber close board fence.
- Existing undefined boundary to remain open for access and will be defined by new kerb line.
- Existing undefined boundary to remain open for access and will be defined by new kerb line.
- Existing undefined boundary to remain as-is for access.
- Existing boundary defined by buildings which are to be retained.
- Existing boundary to remain open for access.
- Existing boundary to remain open for access.

- 15 No. Geranium macrorrhizum 'Czokor' 3
- 1 No. Acer campestre 'Streetwise' 12
- 14 No. Spiraea x Arguta 3
- EXISTING OFFSITE CRAB APPLE (T4) TO BE RETAINED. REFER TO ARBORICULTURAL REPORT FOR DETAILS
- 1 No. Acer campestre 'Streetwise' 12
- 17 No. Hebe albicans 3
- 19 No. Stipa arundinacea 3
- 3 No. Yucca 'Bright Edge' 10
- 5 No. Verbena bonariensis 3
- 18 No. Cotoneaster conspicuus decorus 3
- EXISTING OFFSITE ASH (T3) TO BE RETAINED. REFER TO ARBORICULTURAL REPORT FOR DETAILS
- 1 No. Acer campestre 'Streetwise' 12
- 13 No. Hebe 'Nicholas Blush' 3
- EXISTING OFFSITE CRAB APPLE (T2) TO BE RETAINED. REFER TO ARBORICULTURAL REPORT FOR DETAILS
- EXISTING OFFSITE HAWTHORNE (T1) TO BE RETAINED. REFER TO ARBORICULTURAL REPORT FOR DETAILS

Rev	Date	By	Notes
K	31Jul23	JP	Boundary and tree species revision
J	31Mar23	JP	Revised to LPA request
H	2Nov22	JP	Hard surfacing revision
F	1Nov22	JP	Minor revisions
E	1Nov22	JP	Minor revisions
D	3Aug22	JP	Minor revisions
C	2Aug22	JP	Updated to latest layout

© This drawing is the copyright of Partridge Associates. All dimensions to be checked, not scaled. No liability is accepted for any expense, loss or damage of whatsoever nature and however arising from any variation made to this drawing or in the execution of the work to which it relates which has not been referred to them and their approval obtained.

Client	GREEN CITY HOMES
Project	MIXED USE DEVELOPMENT, HERON WAY, CHIPPING SODBURY
Drawing Title	LANDSCAPE PROPOSALS
Drawing Status	Planning
Scale	1/125 @ A1
Drawn By	17/25 @ A1
Drawing No.	2319/1K
Date	23 Jun 22

