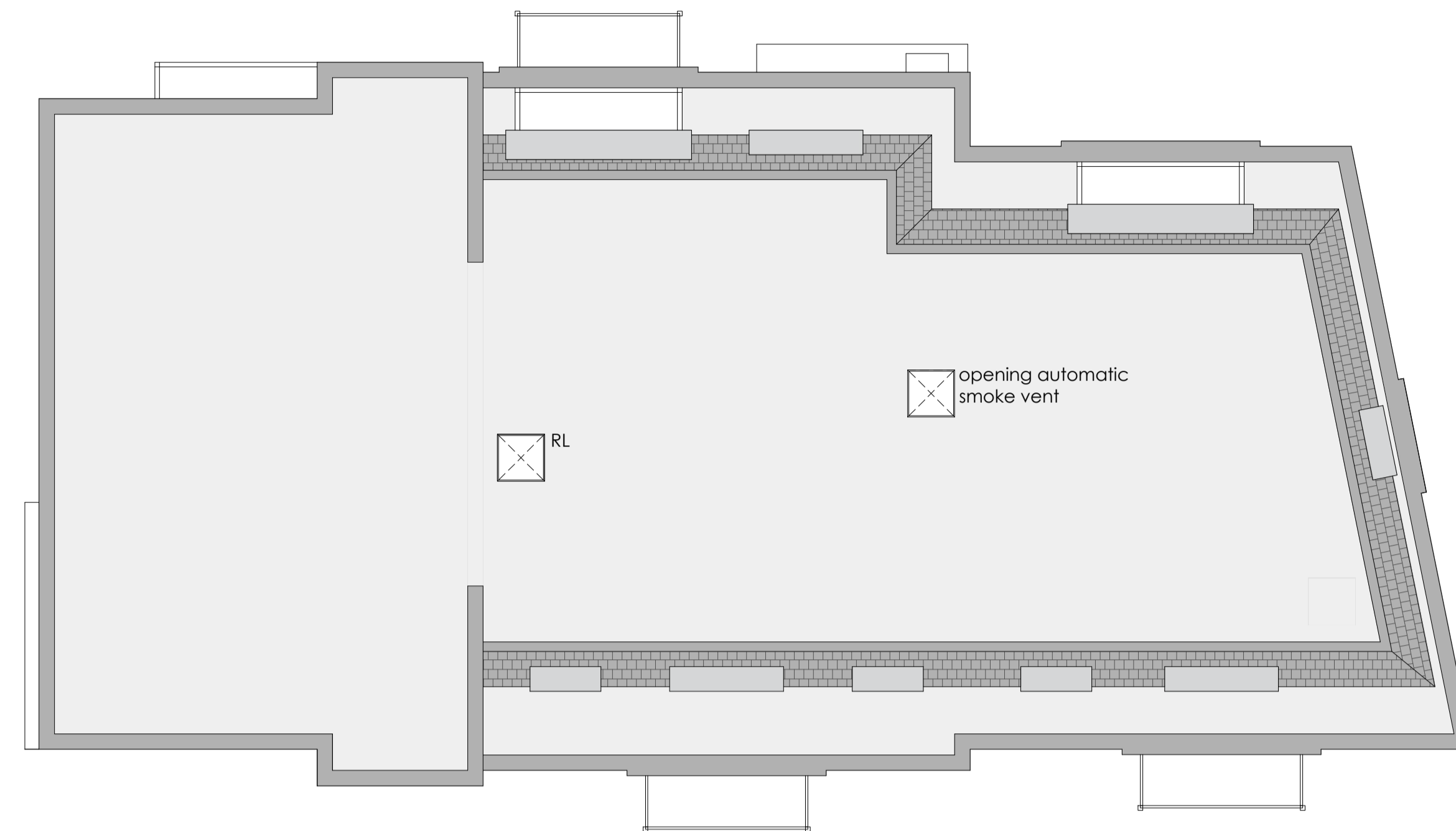
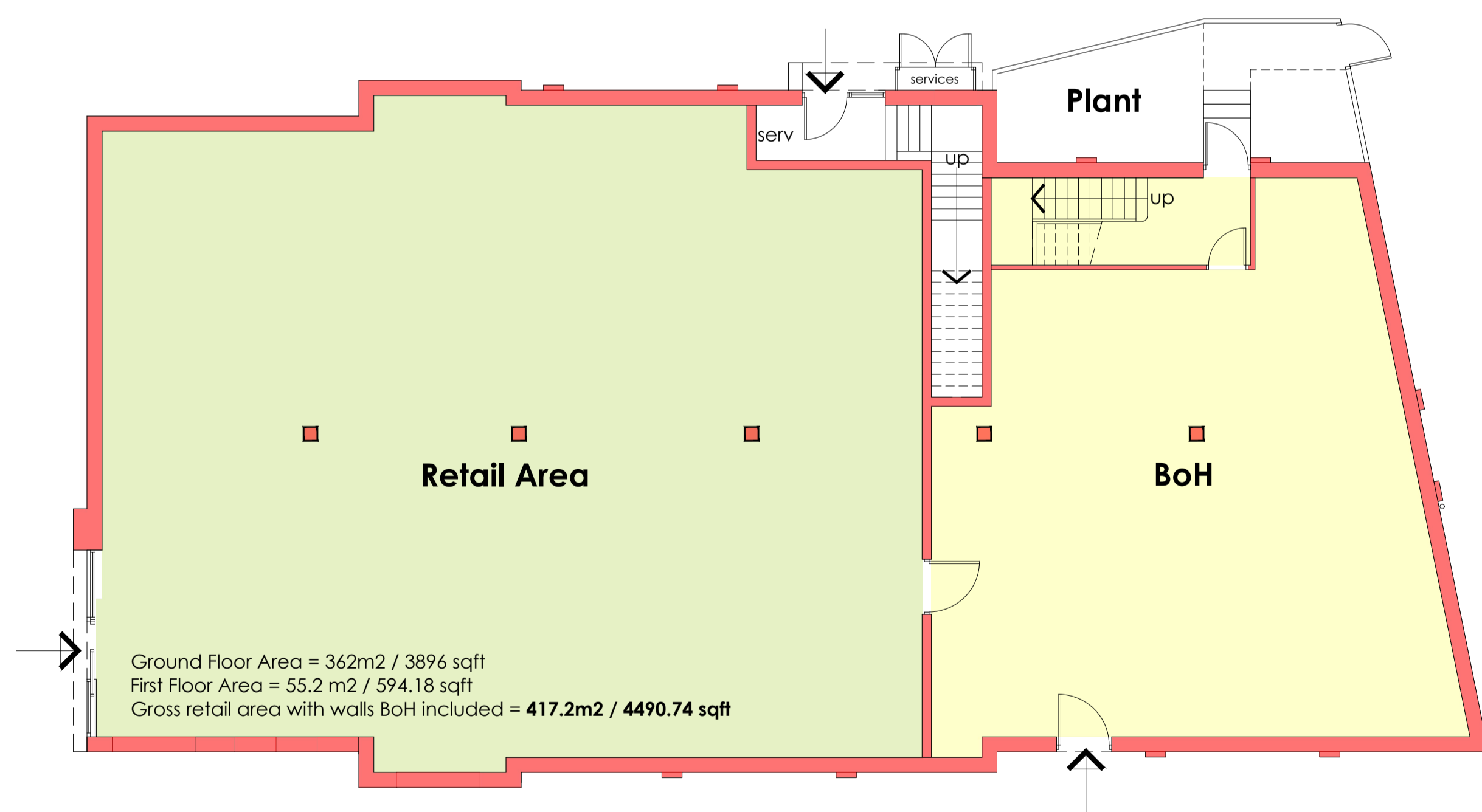


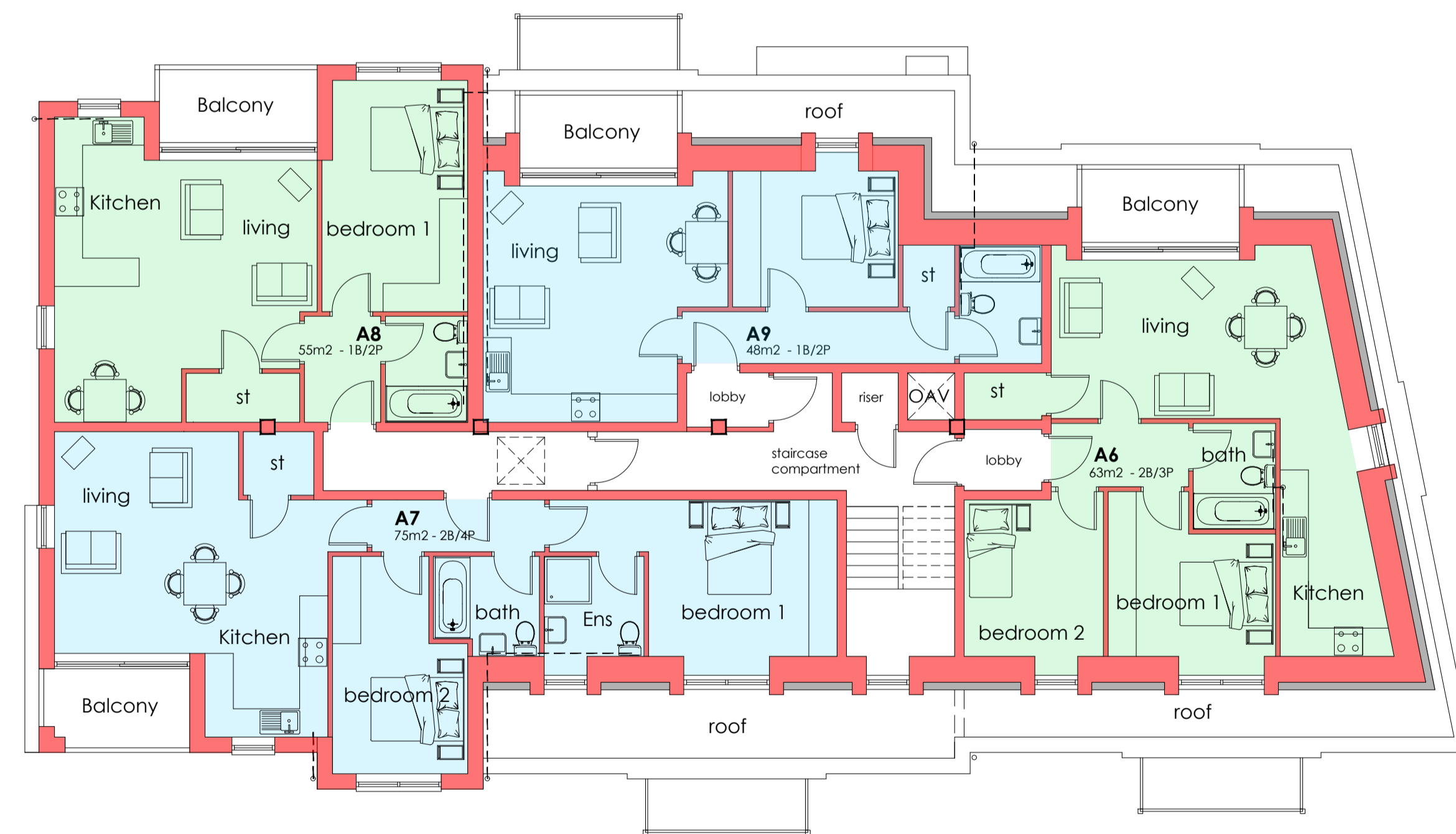
First Floor 1:100



Roof plan 1:100



Ground Floor 1:100



Second Floor 1:100

Accommodation Schedule

A1	50m ²	1 bed	2 Person
A2	46m ²	1 bed	1 Person
A3	52m ²	1 bed	2 Person
A4	56m ²	1 bed	2 Person
A5	57m ²	1 bed	2 Person
A6	63m ²	2 bed	3 Person
A7	75m ²	2 bed	4 Person
A8	55m ²	1 bed	2 Person
A9	48m ²	1 bed	2 Person



client	Green City Homes	drawn	JEK	scale	1:100	size	A1
address	Heron Way, Chipping Sodbury	checked	MG	date	19.08.2021	Proposed Floor Plans	
revision	description	drawn	date	drawn no.	status	21-140-02	revision
G	Revised Entrance Door	LB	15.11.23	21-140	Planning		G
F	ATM removed / Retail Windows Removed /BoH Windows added / incoming services	MG	26.09.23				