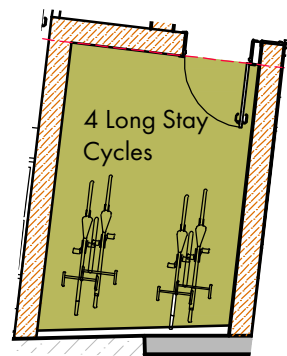


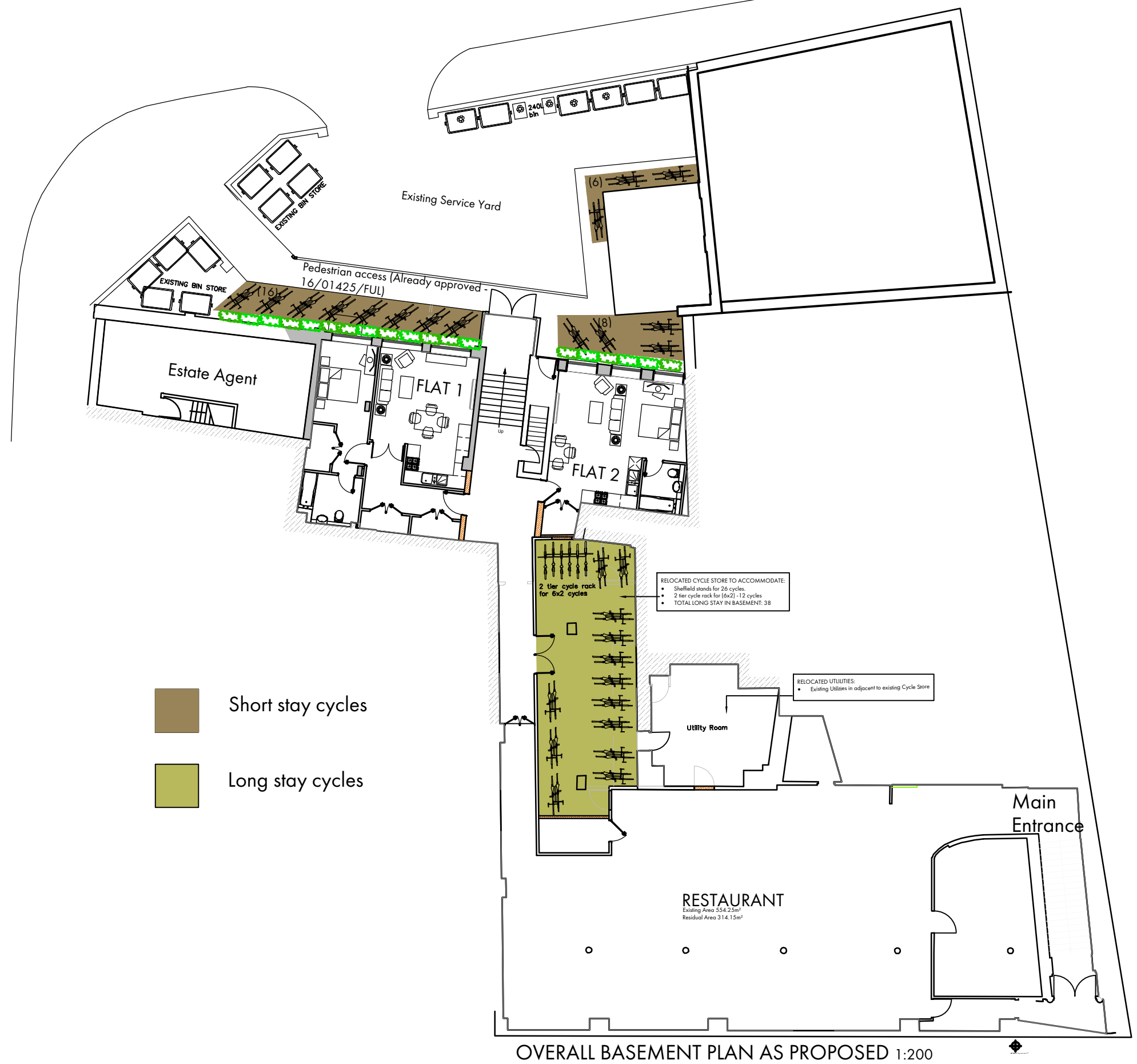
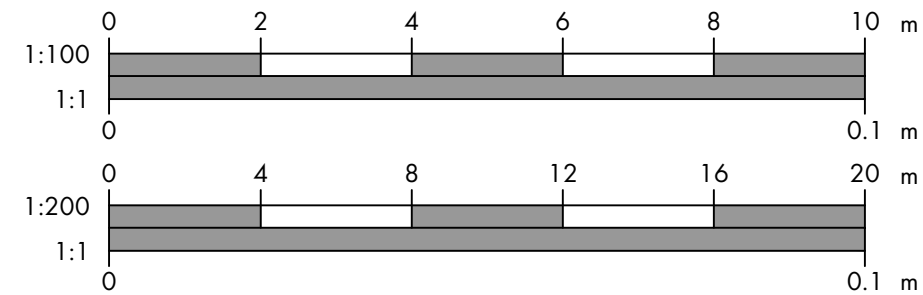
# PLANNING DOCUMENT

**OVERALL CYCLE PROVISION:**

- 42 No. long-stay cycles. 38 in basement and 4 to upper ground floor flats
- 30 No. short-stay cycles



Cycle Store for upper ground floor flats 1:100



Short stay cycles

Long stay cycles

Originator DW	Approved	Date 13.05.20	Scale As noted @ A3
Drawing No. <b>5580-011</b>		Rev. -	Sheet No. <b>1/1</b>