

**Essex Coast Recreational disturbance Avoidance and Mitigation Strategy (RAMS) Habitat
Regulation Assessment (HRA) Record**

Application details	
Local Planning Authority:	Tendring District Council
Case officer	Naomi Hart
Application reference:	20/01405/FUL
Application description:	Proposed 1.5 storey eco friendly dwelling with garage, access and residential curtilage.
Application address:	Land Between Connemara and Netherfield Michaelstowe Drive Ramsey Harwich Essex CO12 5ER
Status of Application:	Full Application
Grid Ref:	(E) 622139, (N) 230676

HRA Stage 1: screening assessment

Test 1 – the significance test: Based on the development type and proximity to European designated sites, a judgement should be made as to whether the development constitutes a 'likely significant effect' (LSE) to a European site in terms of increased recreational disturbance

Is the development within the zone of influence (ZoI) for the Essex Coast RAMS with respect to the below sites?

- Essex Estuaries Special Area of Conservation (SAC)
- Hamford Water Special Protection Area (SPA) and Ramsar site
- Stour and Orwell Estuaries SPA and Ramsar site (Stour on the Essex side only)
- Colne Estuary SPA and Ramsar site
- Blackwater Estuary SPA and Ramsar site
- Dengie SPA and Ramsar site
- Crouch and Roach Estuaries SPA and Ramsar site
- Foulness Estuary SPA and Ramsar site
- Benfleet and Southend Marshes SPA and Ramsar site
- Thames Estuary and Marshes SPA and Ramsar site (Essex side only)

YES

NO

Does the planning application fall within the following development types?

- New dwellings of 1+ units (excludes replacement dwellings and extensions)
- Houses in Multiple Occupancy (HMOs)
- Student Accommodation
- Residential care homes and residential institutions (excludes nursing homes)
- Residential caravan sites (excludes holiday caravans and campsites)
- Gypsies, travellers and travelling show people plots

YES

NO

Conclude no LSE to the above designated sites in terms of recreational disturbance:

- An Appropriate Assessment (AA) is not required where recreational disturbance to these sites is the only issue or recreational disturbance to these sites can be scoped out of any HRA covering other issues.
- Check NE [IRZs](#) to see whether recreational disturbance is an issue for non-coastal European sites or Sites of Special Scientific Interest (SSSIs). If so, this will also need assessing outside of this HRA form.

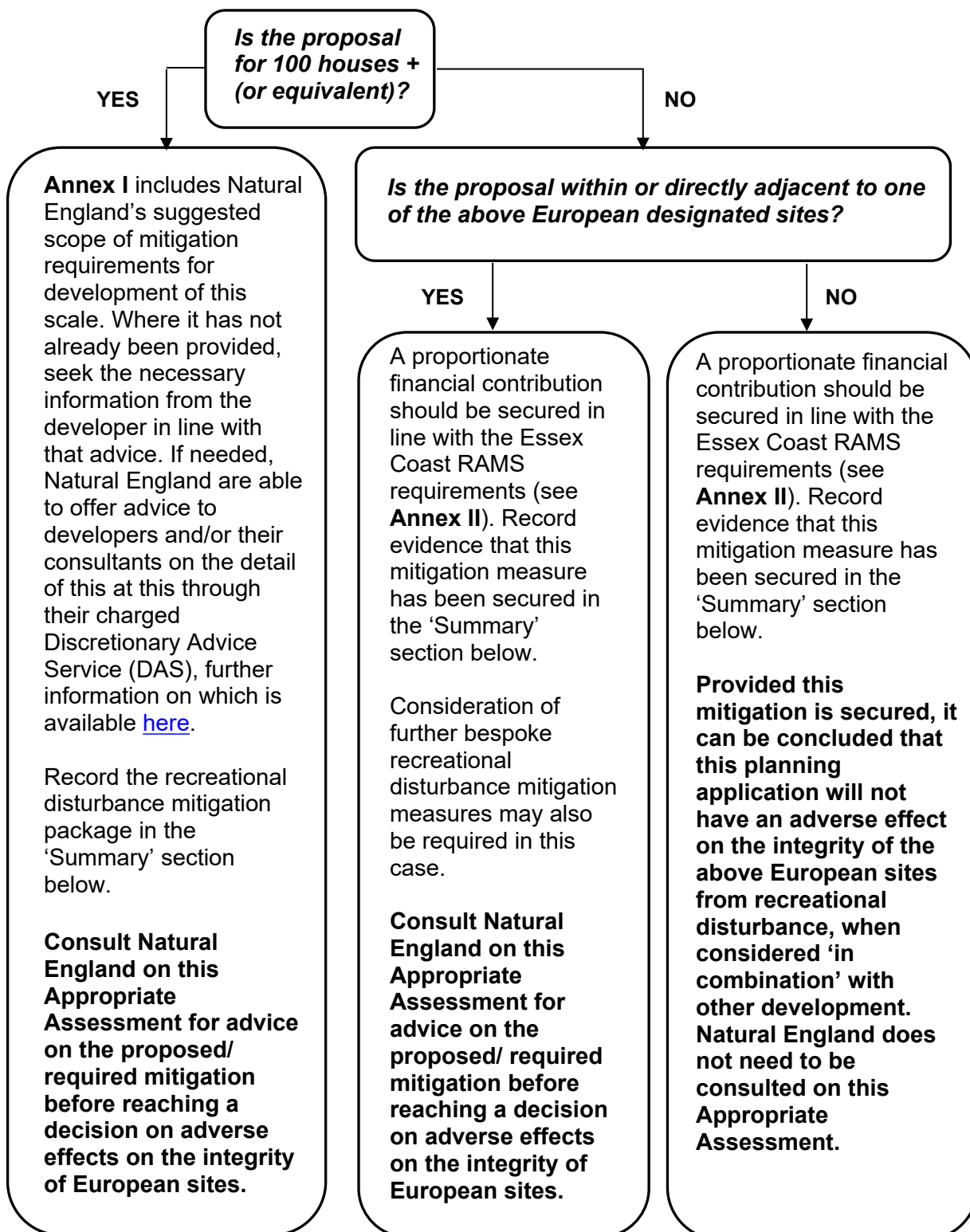
Conclude LSE. This proposal is within scope of the Essex Coast RAMS as it falls within the 'zone of influence' for likely impacts and is a relevant residential development type as listed above. It is anticipated that such development in this area is 'likely to have a significant effect' upon the interest features of the aforementioned designated site(s) through increased recreational pressure, when considered either alone or in combination. Therefore:

- Proceed to HRA Stage 2: Appropriate Assessment to assess recreational disturbance impacts on the above designated sites
- Check [IRZs](#) to see whether recreational disturbance is an issue for non-coastal European sites or Sites of Special Scientific Interest (SSSIs). If so, this will also need assessing outside of this HRA form.

The proposal is outside the scope of the Essex Coast RAMS. However, applications involving tourist accommodation (including holiday caravans and campsites), for example, could still potentially have recreational disturbance impacts (and other impacts) on designated sites, including those listed above. In cases such as these, consult Natural England for bespoke advice before concluding no LSE.

HRA Stage 2: Appropriate Assessment

Test 2 – the integrity test: The applicant must provide sufficient evidence to allow the Appropriate Assessment to be made, which is the stage at which avoidance and/or mitigation measures can be considered



Summary of the Appropriate Assessment : To be carried out by the Competent Authority (the local planning authority) in liaison with Natural England (where necessary)

Summary of recreational disturbance mitigation package

A proportionate financial contribution will be secured in line with the Essex Coast RAMS requirements to ensure that this proposal will not have an adverse effect on the integrity of the above European sites from recreational disturbance, when considered 'in combination' with other development.

Conclusion

Having considered the proposed avoidance and mitigation measures above, Tendring District Council conclude that with mitigation the project will not have an Adverse Effect on the Integrity of the European sites included within the Essex Coast RAMS.

Having made this appropriate assessment of the implications of the plan or project for the site(s) in view of that (those) site(s)'s conservation objectives, and having consulted Natural England and fully considered any representation received (where necessary), the authority may now agree to the plan or project under regulation 63 of the Conservation of Habitats and Species Regulations 2017.

Local Planning Authority Case Officer comments, signed and dated:

RAMs and Open Space

Naomi Hart
Planning Officer
2 December 2020