

North Arrow (O.S. Grid)

Legend

- Bank (bottom)
- Bank (slope break)
- Bank (top)
- Building
- Fence (general)
- Fence (palisade)
- Fence (post & wire mesh)
- Foliage
- Gate
- Iron railing
- Road channel
- Road kerb
- Stairs / steps
- Verge
- Wall
- Bollard
- Eaves level
- Gully
- LP
- Lamp post
- MH
- Post
- TL
- Threshold level
- Top
- Top of wall level
- Telecomm's cover
- TP
- Telecomm's pole

Notes
 Survey and levels are based on Ordnance Survey National Grid (using a scale factor of "1" at site centre) established using the Leica Smartnet GPS network.



Survey Control Station Details

I.D.	Easting	Northing	Level
S1	269415.584	657506.450	55.228
S2	269418.553	657513.907	55.657
S3	269554.522	657499.152	55.362
S4	269471.832	657416.892	58.021
S5	269499.100	657512.282	55.871
S6	269510.439	657508.527	55.894
S7	269536.413	657474.670	55.515
S8	269522.739	657438.703	56.468
S9	269508.670	657370.208	58.786

Revision	Description	Date	Checked

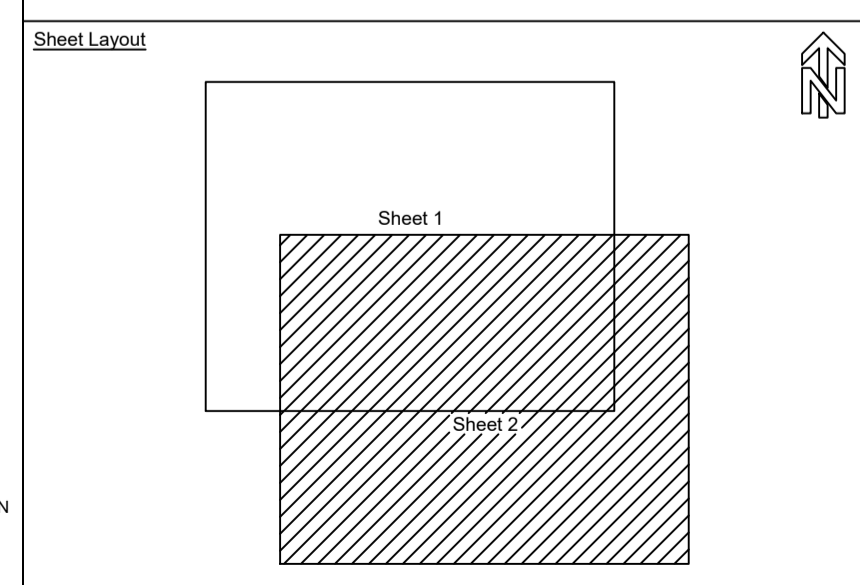
Job Title
KG Stadium Blantyre

Drawing Title
Topographical Survey

Client
Blantyre Victoria F.C.

26 Dalkeith Avenue
 Glasgow G41 5BN
 Scotland

tel/fax: 0141 4276566
 www.sneddensurveys.co.uk
 e-mail: glasgow@sneddensurveys.co.uk



Sheet Number 2 of 2	Scale 1:200	Sheet Size A1
-------------------------------	-----------------------	-------------------------

Drawn By M.B. / C.R.C.	Checked By Q.F.S. / M.B.
----------------------------------	------------------------------------

Drawing Reference 1930-001	Revision -	Date 16/08/2023
--------------------------------------	----------------------	---------------------------