

**PHASE II CONTAMINATION REPORT
FOR A PROPOSED REDEVELOPMENT AT
BURFORD MILL BARN, BURFORD, SHROPSHIRE**



Date: 25th September 2018
Our Ref: HO/27415
Status: Final

Client: T R Morris & Son



&2 17(176

6(&7,2 1

3\$* (R

, Q WFGFWLRQ

7K H6LM

' H VN6WGA

' HVN 6 WXG

202 UGDH6XUYH5 HFRUGV

(QL URQPCVD O HVDOV

, CX WULDCMVOJ

, QWLDGHS WKDOFCHO

) L HGRUN

* KH UDO&FPQW

: LQG R ZHMV6PSDIU%RUHCOHV

* U RXQG&RGLWLRQ

5HFR UGHG*URXG&RQGLWRQV

(GR XQWUHG URXG&RQGLWRQV

&R PPH Q WDCSHFRPHQG D WL RQVRQWDL QDWR Q

&RF HSWKDC6LWRCO

3RVH QWDC6XUHR I &RQDRQDWRQ

3RVH QWDC6RUP LQDWR I &RTHQ

3RVH QWDC6HFSVRUV

3RVH QWDC6DZD \ V

&RQWDPLOWLRQDOVHV

\$WH VVPHQRI 5LNM* XDGHDWK

5HFR PPHQG D WL RQVRU5HFRDWRQ

5 HHUHQFHV

\$ 33(1' , & 6

\$: LQGRZ QWVDPSCWU%UJHRCHRJV

% 6 VMMWFD8OCFXDVRMI R8VZLW8./(\$R GHO

6 RIGRQVPL QWR7HV5HX QW/86

& %URZQ* UHHQ* H R WFKLFDDG * HRH QYLURQPHQDO &RQXO WDCW/HR

HQYLURQP HQDOHVN6VXG5HSRUW%URUGLOSHS RWH HUHCH XFEHU

5SVW\$JXW

' ([SGRURU +RCHFDVLRQOQ

(3 URSRVHG HYHOSPH QWDDQ

) 1 RMMR6LW,QAWLJVRGHSRUW



, Q WRGFVLRQ

, WV SRSRVHGRUHGMYHORSVLDVHDV%UI RIGL09%UIRUGKU RYLUH7KHSRVEDVLCQXGI
FRQYHUVQJ QH[L VACEDUQLQVLYHUVGQVLDXQVWZVKDVE DMGDUGHQVGLYZD VFDUSDULQJ
DQGFUSRUVWVZRZCQVKHSSHQH%CRFN3CQJ GDZIQJHI

8SRQ WKHLQWUXVLRRI VIK&QIQV5HSIMQDMLYH0U* +XFKULV RE H H0C RI VIK&QH075
0 RUIV/6 RQVDQQUVLYJ URQGEQYHMLDVLRCQVEHQFDULHGRXVFRPSULVQJ ZQGR ZQWVDS 0U
ERUHKRQVZL WSSURSULDNDPSC QJQGLQMLVWVWQJ :KHUJSSDL FDECHWKHILHGRUNZDV
XQGHUDNHQLQDFRUGDQFHZLVK% ^{5H} \$GYNVWYGVKDVZDXGHUMDNHCE RYKHULQ
Z DVXSSQIBVR, 3 VQDQGXVXPHLVHGZ LVLQKVL VHSRUV ^{5H} 7KDLFRVWKLQFMMDVLRZDV
VRSRYLGGDNDQGLQKHEVKDUHRI &RQELVFRQVKHFLVLRQRWVHGHVHG ^W-XOI RJ
3 DQQQJSSQIEVQR1 R 8/ZKLFKLVLCFOXGQZLVLQVHSSQGLFHV

7KLV UHSRVFRQVQ/DGNFULSWRQRI VIKVWLVK VARDQVLSVHGRB\ QWVUDVHCFRQVHUG
VRJHMHUZL VQCHQYLURGHQWDCULVQVHVPHQVZK LFKLQFQGHVFRPHQVVRQVK HSRVHQVLDI RU
FRQVDP LQDMRQADII HWV XQVXVHVDCSRVLECHUHPGDPH DVXUV

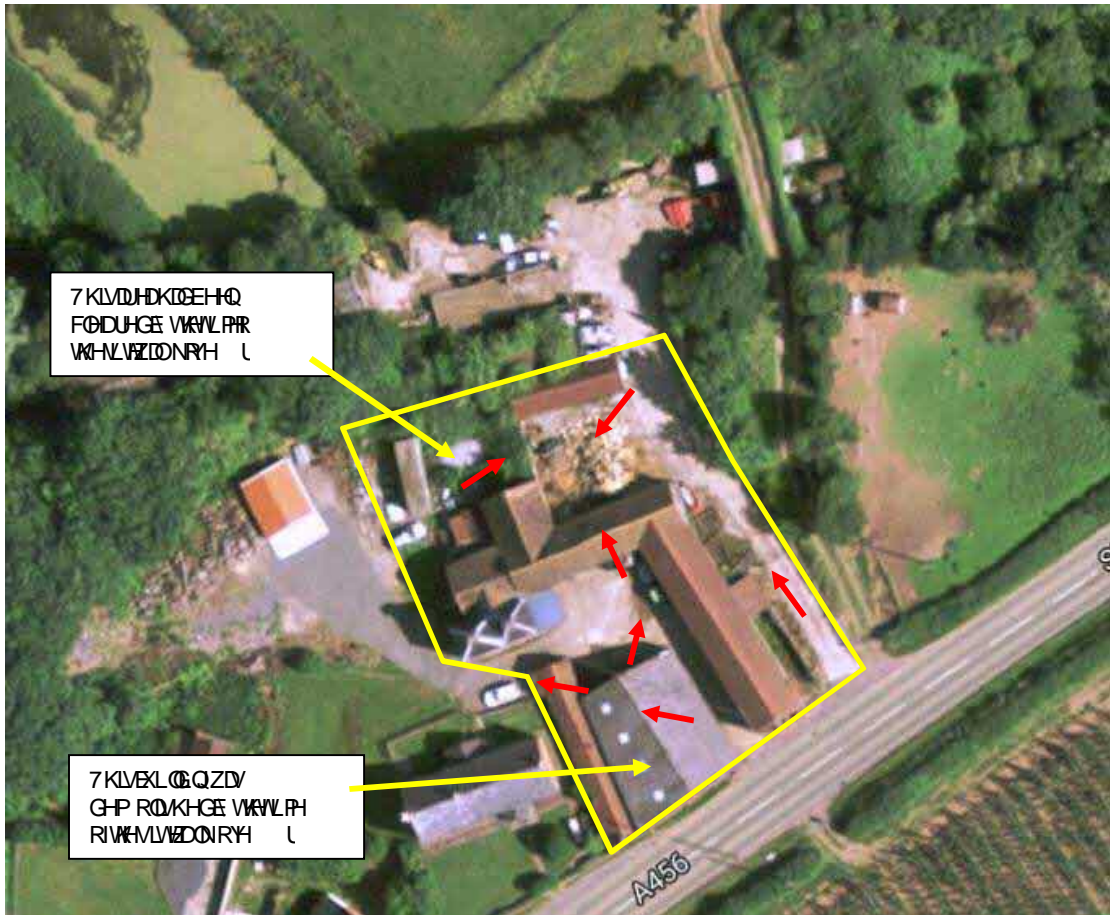
7HW LQIRJDUQJRIK-PLFDGRQV DQDQVZDF DULHGRVVE&RQISWLI HFLHQFHV%/ 6KH
UHVXQVR VVVVWVDUHQSSQGL %

: HDU H FRQLGQVQVWVFRQVLRQV/GUZQURPVHIL QEQV RYKLVQYHVL DNRQDGMNMG DH
DSSURSUDMI RUMHSURSRVHGGYHORSPIQV RZPHUZHFDQRM XDDQVHVKDVKHZRXCQEH
DFFHSWGE UHXODRV DMRULVHVL VVRXVXVLMRQ, VVUHFRQGGVKD WVKHUSRVWQVH/XPLVWG
DQSSURYDQJQEI URXKF KERGLVSVIRUMVVKQVMDLQRI GHVLDGGBNJCQVQVXVLRZRIN
RURVKULUWVHUVLEQISRFHMHV

7K H6LW

\$ZD NRYHUR VIKHLVQVQVMDNHE D* HR QYLURGHQVDCQQLGHUI URP, 3 LPLVHGRQ
\$XJXV\$VWVKHMPHRVVKHZD NRYHUMHML VFRPSULVHGDQWJHXO DUKDSHGSDFORI DQ
FRYHUIQJ DDUHRI KFRVUHV)LJXUV, VZDVVXQVGRQVSSURLPDQONPHDWW
GRUMHDMVR7HEXU : HCV VQCFQVUFTKHSSUR LPDVHFCVH RIVKMLVILGHVHCE DMRDO
* UGHI HUHCFH

WV



7 KLVDHKKEHQ
FODUHGE VAVLPH
WHLVZDNRH L

7 KLVKQZD/
GHP ROKHGE VAVLPH
RIVMLVZDNRH L

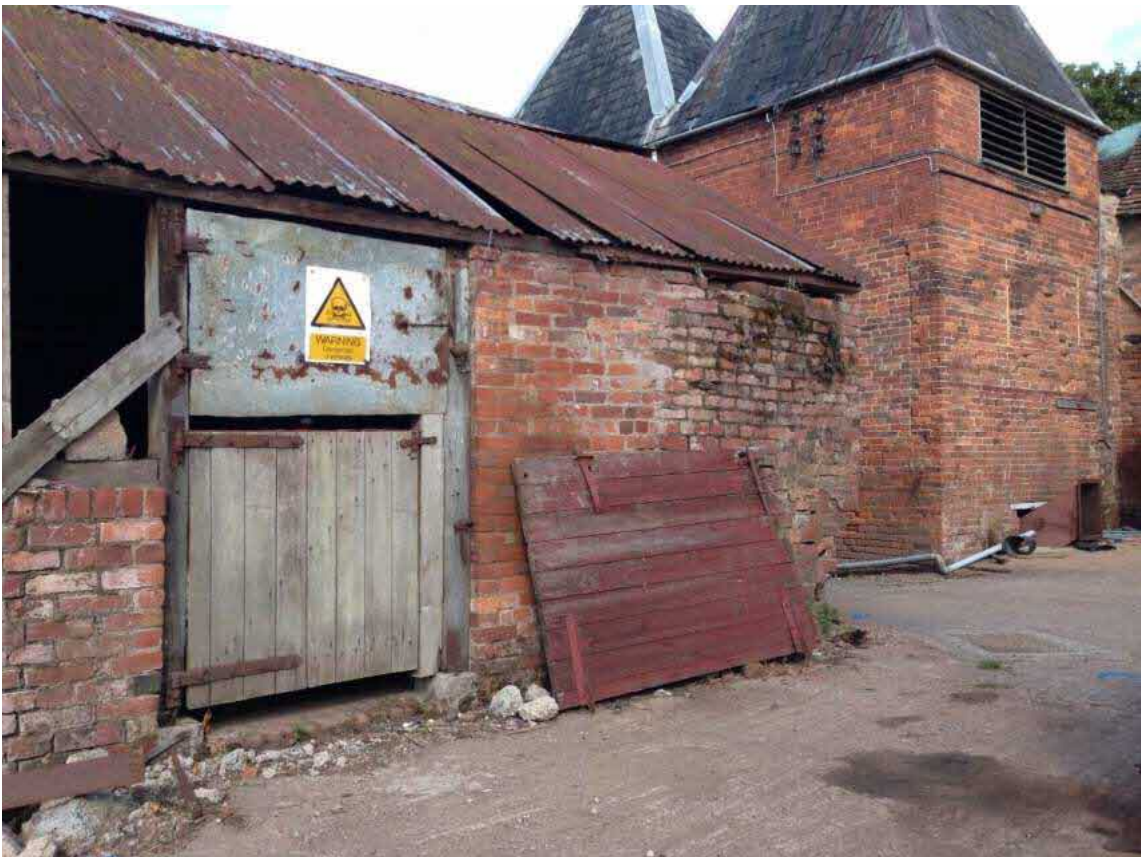
) L XUH ±\$HULDDPH RI VHLVZLVKHSURLPD/VMLVHER XODUVRZQ7KHUHVQJ XODU
VKDSHGXLQQLQKHXWRI VHLVZDGRD VKEDWVAVLPHR VAVLVD ONRYBKRBUSSK
QFDMRQVHVVRZQRQKHHSORDVRAKROHFDVPSODZ VLQVHD \$HQLFV

7KV

LWZDVRXG/VKHKRUMEDQGGVDDQVHGDDZF XVMQVAVHHDVA DPOSSDFORI
IDUP OGGVAVHXVA VHSZVM DPODGGDFUHI DPEXLOGQJVRQHR SRVAVLGRH VH
URDGGVAVHZMVA DUVLGHQVDSURSUMOFFDVAHVKHS VZDFFVHGRH IMLQ
VHXWRI VAVLWZKFOHQLQDFRUMMIDUPA DUGKVRX VHLQSRVLRRI VHLVWFRDLGHG
DQDUHRI OGGKDVSHYLRX/OFRQDLGHGD DPEXLOGQ ZKLFKEDSSDUHQVA UHFHQVAEHQ
GHP ROKHGEQDGLSLEWVEULFNEXGQJZVDFROSVHGRRLUXGQDQORVHXWRIKICKOD RI
VHZHVWUHGJH3KRVJ USK7KHUHZDD/LJQRQVHXLOGQZDUQJDERVQEDQJ HURV
FKHP LFDOVAVRUDSKKRZHYLVZ DVGRVAVRHQVHUMHEXLOGQVRLQVAVJDMVLSQ
VKDSHGVR VAVL EULFDQVLEHUEDQZDVLVDMGDSUR LPDVA LQVHF HQVAVVAVLWZLVQ
DUP R VEXLOGQVAVVQLQGEQAVKHVAVHUBRXODU 3KRVJ USKPHVQZDVHVDQZV
QFDMGLQVH DUGVAVRQURI VHEDDQZD/HQNDVHRQVRELFNSLQDUB KRVLDSKS
QXP EHUR ROGPVQ GRVHUFKPLEDFR QDQVZHVAVRHHGEQVAVKZDVHMDQVHFRUM
VDFVDDQVQVHVDVAVUGJHR VHLVWVAVZHQVKEVQDQVAVLWHERQGDV 3KRVJ USK
7KHQVAVHUBRVRRI VHLVWFRQVAVGRDQFUMMIDUPA DUGVAVKH DMVQEDDHR URXK
JURXQVAVZHV3KRVJ USKVDQSVPOEULENIX LQ DVIDPEXLOGQVQVREYVQDQVAV
HDMVMDQVIRVAVRUMHUBRXQDU 9HUVAV/RQZLVQVAVVAVZDQLPVAVSDVAVI VR JUVADGG
ZHGVZAVVPLPD VU HQDPVXUG HFLGRVAVHVCDFMGGQVAVHDMVQDQVAVVAVHUGJHV



3 KRWRJ UDSK±ZDNHQ URPWRKRX WRI WJ-MLVQFRILQWPKZWW



3 KRWRJ UDSK±ZDNHQ URPWRKRX WRI WJ-MLVQFRILQWPKZWW



3

KRWJ UDSK±ZNHQ URPWKRX WRI WMLVQRRLQWPKHBMW



3

KRWJ UDSK±ZNHQ URPWKRX WRI WMLVQRRLQWPKHBMW



3

KRWJ UDSK±ZNHQ URPWVRX WHDVRI WHLVORIQ VVHCVKZHW



3

KRWJ UDSK±ZNHQ URPWVRU WHDVHURU WHLVORIQ VVHCVKZHW



3

KRWJ UDSK±ZNHQ URPWKRJ WZHVRJ VHV L WBRJQ VVWHEW



' H VN6WG

\$*HR (QY LURQPHQDO HM6WG\ UH HUHGFHQPEHJ SWDDGD WRELDWHG*URXGGXUH
 5 HSRUWHUHGFHQPEHU% IRWKHVLWKDVEHQXSSLHGEWK&QLHQWR, 3/ VG
 FRSLHVR ZL FIDJLQFOGHZLWKLQVHSSGGL 7KHUHSRVDVSURGXFE\ %RZQ UHQ
 * HRWFKQIEDQG* HR (QYLURGHQWDOOROK OVDQWLQGXJXMDGGJLYVGHMDOVR KWWRLFDQVM
 XVDJHDZHODVRFPHQW X SRQVHQYLRQPHQWVHWWLQIRKHWV7KHUSRUWVRXGEHJUDGLQ
 FRQXCFVRQZ WVKVUSRUMKREYHUMKHJHDDQWFFVLRQDHEUHI OVXPDUMGEORZ

202 UGDH6XUYH5HFRUGV

7KHLW HFRQVQWKHVKDSHEDUQMDVLWREHFRQFUMBNZHOOWKHUHVDOCHLEXLQGV
 VXURXGGQJLWVRVKHLUMDLODECHLWRQLQVQVLLVVRZQVFXURXGGE
 ±XURUGL QFRUQLORVZVVDLQZD QZVWQDFXVQVVRUMVDOORFKDGRVKH
 HDWGG IEGVRVVRKWRFDVGFURVDRDQXQQLPPGLDNOIGMDFQVRVVRKVKHGGH
 6 RP HR VVPRD HUKLQQLDHFVRZQKDYHEHGHPRQVKHGGUSDFHE\ QEXLOGQME
 VHELVLRZKHHDURVLJQILFDQHQZLVKQKMLVH URVHQQVQVHEVLRQKH
 UDQZD LVDEHCGVGLVQVHGJURVHKGLWRQKH HN6G USRUMDOVRLQGFDMVWQDV
 RQDQKWRLEDBULDDPHU VRZWKDVDDJHSDOXW CD.RQZVGYHORSQVVRVHQRVKRI
 VHLVVEHVZHHQDQG

(QL URQPHQD O6HVVQJ

) XCGH VDLORI VHQYLURQPHQDORVWL QJR VHVLMFDGEHRKQGLQV DSSHQGHGHN6WG
 KRZHYHUNPDLQSRQVWDEUHI OVPRDLVHGEHGE

%HGRFN\$XLIHUHLJQVLRQ ±7KMLVWVXCHUCLQ VHSDDQXGVRGH) RUPDLRQZKLFKLV
 GHMJQDMGDV6HFRQGD \$STXLIHUGLQGVSHUPDEQD HVFSDERIVXSRUWQZDVU
 VXSSQMDVPRDLMUMDQMDVHLEFDCHQLRPFDMV RPL QDQLPSRWDQWRXUFR EDVH
 I@ZVULYHVT

1 HDUHVXUIDFH DWHJ HDVUH ±7KHQDUHMXUDFHDVU HDVUH VDDMLLFLDQSDQNG
 DSSURJIPDMOPVRVKQRVZHMDFURVWVHGLPDQVHGLDQZD QCHMOWQMDDFHQDQ
 SDUDQVVKQRVHQRKQDU

: DMUSEVVDFVLRQ ±7KHUHDVZRXUI DFHZVHDE VMDVLRSLQVZLVKQFR VHVLVVVKH
 QDUHVR ZL FKVORDNGPVRVKVVRX VZHWVQGLVIRVVKHDEWVDFVLRQZDVUI URVVKH
 /HGZ\FKHPRRNI RQVSD LULLDWRQJ



, 05X WULDGHVWQJ

) X0GH WDLORL WIKGWLDCGHWLQR WHVWDFEHRKQGLMHDSSHCGGHN6WGRZYHU
WHPDL SRQMDHVPDUL V HGEORZ

&XUHQWGXVWLDYDGS VH ±7KHUHUHQSRVHQV LDOFRDP LGMVY HLGXWLDCHQMLHZVKQ
RIVKMLVH

/ DQGLQGLWDCG DWH LVS DO) DFLQWLHV ±7KHUHUHVZKLVWRUFDGGLQVWVKQPR
WHLVWVQDUHWR ZKFKLVORFMDLQKHZMUGSURI VKNLWMDQDQDFHGFVDFHVS
LGHVWVWVHFRGQDUHWWLWLDORFMDLQKHGRUWKHD WDFRFFHSMQLGHVWVH

, QW LDGCHS WKDOO FGHO

\$Q,QL WLDGCHS WDOORGHQ L VQ FOXGGLWQMHSSHCGHN6WKG DQGLVXPPDULV HGEORZ
\$FRUHQVWLDGXPDU\ LVLDGCHGQWKMEORSDJWDFORVKHSSHCGGUSRW

3RQW LDGRXFHRI &QMDRQLRQ

2 QLVSRVHQVLDGRUFHV ±KYHEHQLGHOM LKH
x2 L QXPV
x, FS RUMELGHVWVHZLWV QMHQD LQDQG
x3 8QNRZQKLVWV R WHEHU RXQG

2 IIVLSRVHQVLDGRUFHV ±KYHEHQLGHOM LKH
x+ L WRUFDGLQMDRKHQR UKHVV

3RQW LDGDMZDV

7KBRMQ WLDGDMZDVHGHVLDLGHQVWVORSDJWDFORV KHSSHCGGHN6WKG
UHSRVDGLQXGLQHWLQRFRQFLQWHGRLOFRQVWVKRQVLDQVROVQDQVLRQW
XSDNHE SDQVWDPYHP HQWVKURKVRLOVQGLQDVH

3RQW LDGHFSWUV

7KSSHQ GHGHV6WKG UHSRUGHWLURGHMMSRWLE GHUHSVRVWRQDGH XVUHXVURVKMLV
DQGRQWVFWRZRNHUV+XPD+HDOM&RQVDFG DMVFRQ WKFVCPDMLDQFRQ UHWIDG
QWGXELQGVQVQKLVWRUFDLWV



) L HQZRUN

* HQH U DO&PPRQW

7KSH YDLQJURCFFQGLWRQZHUWVHUR CHEZVWVH XHRIZLQFCHWVDFSGUIRUHKRHM\$OO
WHH SCRDVRAKCHZHJHXGHWNDHCKHUHS SFSULDWILQDFRUBHHLWK%

5H

: LQG R ZHVV @PS@U%RUH@HV

6L ZLQ GZCHWVDP\$HURUH KCHZHUVXQVGH\$WRI ENZHQPIDGFEH@ZH L VWQJ
JURXCGDYHQVWVADGESHQVVDLROMM63VZHUHDUULHR XWQKHJQXODURQWRDVHW
VHUBDNYG@MLV@GQVFRKMLYHVRLOSURYLGQDLFS@UXGHRFRQLVWQF(QLGHYHULI L@G
@JVDHL@XGGLV@L\$SHGL \$

, WRX @EQRV@NDZLGRZ@V@DSCHURHRCH: @DEHQGULO@ GRXWLGRI WKG@RSPHQV
ERXGGDU DVWUHTXWVRI W@SQW

* U R XQG&R@GLWLRQ

5HFR UGHG*URX@&RQGLWRQV

7KDYD LODECH\$XLKHGJH@JLFDCLQIRUPWRQ 5H L@LEWVWVWVROLGJRCR\ VFRQLWRI WKI
6L@UDG@J@D@XWVR@) RUPDM R@LOW@D@CPXGWR@ 7KHU@H@R DXOVZLWLCPR WKI
VW7KHU@H@H@XSHU LFLD@S@VW@K@Z@RY@H@L@W@M@R@G@H@R@J@K@Z@H@U@S@Y@H@U@D@F@H
' HSRV@W@H@K@R@Z@Q@R@E@D@F@D@M@P@W@K@H@R@X@W@D@V@Z@L@K@S@O@Y@L@D@S@V@L@W@V@D@N@G@P@W@R@W@K@I
VRXWZHWW

(@FR XQVHUHG URX@&RQGLWRQV

) RI@XO OGH@L@R@W@K@M@D@V@E@R@Q@N@H@G@H@H@H@Q@F@K@R@X@E@F@D@G@W@K@H@D@S@H@G@H@Q@L@Q@H@Y@H@L@I@L@H@G
@J@V@S@S@H@G@L@ \$KZ@H@W@K@H@M@D@H@Q@V@H@D@V@H@R@W@H@H@Q@L@Q@H@U@Q@J@H@R@C@J@F@D@E@V@P@P@D@L@V@H@G@V
I@R@Z@V



&R PPH Q W/DGSHFRP PHQG D VL RQMRQVRL QDWR Q

&RQF HSWKDOEL WIRGD

, ODFR UGDQFZLVK(QYL URPHQV\$JCF (\$GRFXPHQ%/5µCRGH3URFHXUHV RUVKH
0 DQDUHP HQM &RQVDR.Q DVHG DOEJVKHQ RUPM/RQ I URVWLVL VILQHWJ DMRCQDYEHOXVHGR
JHGHDMDLMDWHMMPHQ/7KH\$USRVHRI WKLVLVMPRLPDRGLIWK HFRGFH SWKDWHRGHQVR
HMDEQ/KZKHVKUMHUHUHQ SRVHQV LDOXGFFHSWDECHULVNSUHQVQDQGHWHUPLGHMKHDFW RQ
UHTXLUHGVSURYLGHQI XUMHUIQI RUPM/RQ VWHI LQMKHFRHOKHI L QGLQRI VHKRQHSVYDQVH
P RGHQDHWXPPD U L VGEHORZ

x7 KHVLVH/RODFVULVHE DFRYHURIODGFURXG EHVZHHQPDQPEHQHDMZKFK
DUHFRKMLYUHLGDOFQRI VKEODGGOXGWRQI) RUPM/RQIS XSUI LFLDQ HSRVW

x* URXGGZDVWUZVQRVGLQ QVQD QGGEVZHHQD QDP: GZ DVQVHG
DMµGPS JEHVZHHQPDQGF RJ URXGGZDVHU ZVQRVHZLVK LQDORWKUHJSCRUDRU
ERUHKRQMGULQVKEULHSHURGRVLFHMOWKHZHUSHQIRPRLVRULQVVDQ GSIHSHUH
LQMDQDGDVSDMRVMLVQYMLVDVWR

*, VV\$RSR/HGRUHGMYHORSMDVHDMVXRUGL OOXUI RUG GGSVKLHQHD7 HZXU :HOO
: RUFHMMU/KLH7KHSURSR/DOLEOGRQYUWVQJDEHLVWQJEDKELQELQI RUVLGHQMDX/H
FUHDMQILYLQGYLGDOKR/HVZLVQZIDJGHQ/GULYHZDVFDSUNLQDQGFUSRVW

x7 KHVLVHDKLWRUFDQFRQVCHQDQVKESHEDJQ URPMHILUMDY DODEHLVRULRDPISXQIO
VHSUHVHQM) ZLVVH/HUDOPDQLE XIQLOJ VQEDVHGDVXQGEV7KHVLVHLVQZQVQKDY
SUHMRXVOEHCQGLU IDJ\$VK HVPFR VVKV WZDQRYHUVNL WZDVEHQXVHBRVKHVRUDJH
RIFOGDPPD FK LQHVDQGYKLFQHV

x7 KHODI LQVMDGOM LHEVVKLQVHGNVVG UHBRVWRECRFDMEQKHZMWWQSDMR VKEVLVW
DQGDVQVRFHGRVDFHSVLGHUDDVM

x\$ QXPEH URI RQVDRDOR VHUFKHPLFDQFRQVLDQVZHUHEVHUMHGCGHUGHVYKWHHCHDWHG
ZDMUQDQOEDVHGQVHFRQVHRI VHLVW

x2 QHRVWHI LVLQELQEGQJQVHVKHUSRUMRQVVKHWHGVSD HBYJQDGRUZDQJ
DERXVQJHURVFKPLF DMKZYHULVLVQVQDZKDMKMHKHPLEDVUHDVLWZDVQVND H
VHCVUMKEXLOGQVRLQVMDVWVVLV

3RWH QWLDG6KUHVR I &RQMRQDWRQ

) URVW HKL V VRULFDQSSQJ DQREVHYDVL RQ/PDGHXUQVWHI L HGEZRNVKHUHDHIZ SRVQVDO
VRXUFHVR RQVDR.Q DVLRQVGVFULEHGEORZ



Potential On-Site Historical / Current Contaminant Sources

- x7 KHSUHLRX/VHRI VKHMDVDEVI DDPQMBVR E.DVWCVHRI I DUPDFKIGHJDOYHL FOHV
DURXQGMM/VH
- x7 KHODG H* URX GSHQFRQVHUHGDFURWVHMLVM
- x\$ QXPEH URI RL QURVDOER VKHUVFDOHUFKH PLEDORQVD LQHUVKDWZHUHSJHQAHQHGHDKVKH
HBYDIMGZVWUMDLQMHQVHRI VHLVM
- x7 KHELQGLQKMRVKHUCRUM/RQRI VHLVZKFKGLSD\ HEDZQLQDERXVIGDQ HURXV
FKHP IFDQ

Potential Off-Site Contaminant Sources

- x\$ Q\ ODG H* URX GELQVWXURXGLQ DUHVLGFXGLQVHDIHRI GHSHUDGH URXGGDW6
DWRFDWGLZ VVXUFRUGHKL VRLVFDQDQCO
- x7 KHUFRUGHKL VRLVFDQDQCOVREVRVVKHGRUMK HWW

3RWH QWLDOSRMP LQDQVRI &RPHUQ

: LWUH I HSHQMRFXUHQWXLGHQ QVDJGHUDDQHR FRPFRORFFXUULQJFR QVDPDQW/DH
VXP P DUMHGEHOZZ KF KIDYEHQMMWHGRUQDQPHRIVPSO HVMERVVH GR8/6I RU DD VW

- x0 H WDFDPLXP FKU REXFR SH QDGPVUFU QLPH ONDQDLPDQ LG
- x1 RQPHVDQVPHWV DQGRU DQFVDMHQFVCHLXPAQLGS-DQ GVE-MRV
- x2 UJDQLVSKROVSHVCHPKGUR FDUERQDQSRQDURPDMFK GR FDRQV3\$+V

3RWH QWLDOSHSHRUV

- x+ XPDQLGDXGQFRQWUXFMRZUN DQ XKHV/HURIVKHSJFVYEGYHORSPHQW
- x* URXGGZVWUZWKQMHQGHUQ LQDQKUDGHSRWW
- x% XLGQVXEWVXKHV



3RWH QWLDQ3DND\ V

- x6 NL@HFRQVDFWLQHMLQDQ3GDDDLRQXULQVWGHYORSPIQDQGEA FRQVDFWQKDDWVRQ
IURP IXXUHRFXSLHUVLWRLV
- x3 HUFRODVLQZDWHUPDD FVVRPEOLV HFRQDPLQDQMD QWLDQSRUMKHPGRZQDGVX @HUJUDYLW
VRZ DLGWHZDWHUWZDH
- x0 L JUDVIRIFRQDPLQD QWLQURKQZDWHUX Q@HUKHORH@A @DXQLEJUDG.HOV
- x7 UDCVSRUMFRQDPLQD QVWVRKFRDQDLQ@H VHPYLDXU D FHXCBI I
- x0 L JUDVIRIVROJ DWDQGYFDWQHYDSKUICRZ

&RQW DPLQDWRQSDQVHV

, @RUGH UVRVNDLQSUHCLPQDU YLHR VHSRMDQL DDIRFRQVDR QDVRQHYQ/DPSOVRVWVH@DU
VXUDFHLR @ZUHI RUDLGHGR&/@ RUDQDD VLRI DDQHRIFRQDPLQDQLQDFR @DQFZVWVKH
&RQFSWDDQ V@RGHOM@R ZLFXZHUHVVHG R@HMRQKPA GUFDER QDQDVEHWRVFRQVQLQJ
P DIMUDQ7KHVDPSCH V@W@EDSHUHG@REHU@H@H@Q@D@Y@RI V@H@L@S@J@H@Q@K@S@K@H@L@V@W@
VKRX@E@DS@U@H@L@D@H@Q@K@H@H@H@F@L@Q@W@K@S@R@Q@W@D@C@R@U@Q@ @W@L@H@G@U@H@V@F@R@Q@D@P@L@Q@V@R@G@X@S@H@F@V@
DUHDVDPD EHLGHQM L@G@K@X@X@Z@R@Q@D@Y@V@REI XUMKHILQYHMLD@V@G@V@H@V@G@L@W@
D@V@H@V@P@H@Q@R@U@K@D@L@W@Q@L@D@V@R@Q@D@G@Q@F@H@M@L@Q@V@H@D@L@Q@I@URP@R@V@H@Q@M@R@G@X@F@H@G@ V@H@V@S@H@D@G@
TXDQVR W@E@D@M@D@G@E@D@C@W@L@F@D@H@K@R@ V@UR@X@J@K@M@H@F@K@R@F@H@R@ V@K@P@R@G@D@E@S@M@G

\$WH VVPHQR I 5LWMA XPDQHDDWK

7KH@ (\$&RQVPL QVHG/DQ @ [SRVXU\$V@H@V@P@H@Q@M@R@G@H@F@R@P@E L@Q@L@Q@I R@U@V@L@R Q@R@W@H@R@L@L@ V@R
V@L@R@Q@V@P@L Q@Q@V@L@V@K@W@L@P@H@V@R SRV@V@L@D@H@ [SRV@U@E@ D@G@O@W@D@Q@F@K@L@H@Q@L@Y@L@Q@R@U@L@Q@D@R@U@
S@D@ I@Q@R@Q@D@D@I H@F@M@G@E FRQV@D@P@L@Q@D@V@L R@RY@W@R@Q@S@H@U@R@G@V@RI W@P@H@ V@S@U@G@L@F@W@M@H@P@R@Q@V@R
FRQ@D@P@L@Q@D@M@Z@K@L F@K@H@P@L@J@K@V@E@H@ [SRV@H@G@E@V@H@G@R@O@D@L@Y@H@Q@R@L@O@F@R@Q@D@P@L@Q@D@R@Q@F@H@Q@W@D@V@L@R@%
FRP SDU@Q@S@U@G@L@F@V@G@H@ [SRV@X@U@Z@L@V@K@H@D@W@K@F@W@H@L@D@D@K@M@R@Q@R@H@L@D@E@C@R@I@D@F@H@S@V@E@O@F@R@Q@D@P@L@Q@D@W@
L@Q@D@H@M@H@P@R@G@H@O@F@D@E@X@V@G@R@J@H@C@H@D@M@&L@W@F@D@G@R@E@Q@W@D@V@L@R@Q@& F

7KH@RL OVDQD@W@D@Q@D@V@M@F@R@S@D@H@Q@R@M@H@& F@X@L@Q@V@R@V@D@V@M@F@D@H@R@G@R@X@V@L@G@H@G@* X@L@G@H@R@Q@
&R@P@SDU@Q@G@R@L@Q@R@Q@V@R@Q@D@V@L@R@Q@D@V@D@Z@L@W@D@&L@W@L@F@D@Q@E@H@Q@W@D@V@L@R@Q@ 5@H@ @E@U@H@G@V@K@H@M@S@U@Q@M@K@W@D@U@H@
D@S@S@H@G@G@H@K@D@L@F@R@I@W@K@D@V@H@M@P@H@Q@L@W@R@S@U@R@R@R@K@H@Z@L@V@W@D@V@H@D@Q@X@G@U@L@Q@V@W@L@D@V@L@R@L@V@L@V@
I@R@S@U@S@R@V@L@Q@V@D@W@K@H@Y@H@O@R@F@R@Q@D@P@L@Q@D@V@L@R@Q@D@V@R@D@D@S@R@S@I@D@V@H@D@V@X@H@R@U@L@V@N@ Q@V@D@M@W@V@E@D@
W@M@P@W@L@T@X@M@W@L@R@Q@V@H@G@H@G@X@L@Q@I R@P@D@X@SR@V@K@H@V@7@K@M@D@U@K@H@I@X@G@A@SR@M@L@V@Z@K@H@E@V@H@
W@K@H@P@D@G@F@Q@F@H@Q@W@D@V@R@I@D@I@Y@H@Q@R@Q@D@P@L@Q@D@V@L@R@Q@V@U@H@D@M@K@D@R@U@H@T@X@D@V@R@M@H@L@V@L@E@Y@D@X@H@
&F@D@Q@K@H@S@O@V@H@Q@D@V@H@+@SR@V@K@H@V@Z@K@H@U@K@H@W@X@H@P@D@L@Q@M@V@W@K@D@Q@M@F@U@L@V@L@E@Y@D@X@H@
1@X@G@A@SR@W@K@M@L@V@L@V@M@F@W@G@M@H@Q@H@O@D@L@G@H@P@H@L@W@RU@S@X@S@H@I@W@H@I@X@O@A@SR@M@L@V@L@V@S@H@Q@
FRU@H@F@W@H@Q@W@K@D@Q@V@G@H@P@H@X@Q@L@W@R@U@S@S@H@R@U@H@P@H@L@D@V@R@Q@V@Q@H@F@V@D@U@R@U@Q@G@H@L@W@L@V@R@S@U@S@R@V@H@

, QWD QJCHL& #DYEHHQVHGVDVUFHQ.QSURFMDCRSWLQ6RLQFUHQLODOHV6@V
SURGXFHGE \$VMLQ&RQ\XOVDOVDCDYLDCDECHURPVK\$7,6 VRLQZHEVLVH #H KDYEHHQVHG Q
VWLVQVDFHYDQHV RUJUNLGDVDOZLVKSDQKSVNDHJDURQVGHG'VEHMFVMSRSILDMI RU
VHQDQVHRI VESRSVHG-QGXVDJH KHUF@ Q GHMFW' ZHUFHFRUGGLQVH/DPSCHGDMKA
KDYEHHQVHQSDFGE\ VHUHQNDQPHVKR@ HMFWRQQLPW

0HWD1 R QHMDQG3K HQRQRMDPLQDWLRQ

7KHQDQ VLFDDGDQVEHQVHYLH-ZHGCGMDLWL FDRXVQDHYDVEHQGHOMLHGQ @PI RU
DUVHQLFNJDQG @DGRNUN7K LVLJKVEHHSO LCHQVD@ KRWSW 7KHUHQVRI VKH
DQDQVHMDHLQGXGZLVKQSSHQGL[&VHVKHVLZLVKHWVQVWVLFDDQVWPHQVCFHVKH KRWS WLK
UHP RYHGUPVWKDQVWVPHQVWKHVKH XQ@SRVWV LVLVHMFVBRUDQGMVPLDQVHWVHG

3RADU RPDVLF+\ GUFDERQ/3\$+

6@KDYH EHHQGHULYHG RUXVVKH@ 3QLVRSJURLVFRQVDR QDQVHQDQVWVQD
KQVEHQVHQLHZHGQGRVMDVWVDRVQVQVHVKVEHQGHQVLI LHGKHUNQVRI VHQDQVHMDUH
LQFOXGHZLVKQSSHQGL[&VHVKHVLZLVKHWVQVWVLFDDQVWPHQVVKHX CO@SRVVKH/LVQ/EHQ
UHMFWGRUDQGMUR.QDQVWVHMG

+IGURF DUERQ&RQMDPLQDWLRQ

6@KDYH EHHQGHULYHG RUMKHIDFWLQVQVQVMD VVRI KIGURFDERQVQVDFRUGQVHZLVKVKVH
RXVQVHGE V@FRVQV@NVRQV@ GURFDERQ&LWHUL DRUNQV URV3-&.*7KHQDQ\ WL FQDQD
KQVEHQVHQLHZHGQGRVMDVWVDRVQVQVHVKVEHQGHQVLI LHGKHUNQVRI VHQDQVHMDUH
LQFOXGHZLVKQSSHQGL[&VHVKHVLZLVKHWVQVWVLFDDQVWPHQVVKHX CO@SRVVKH/LVQ/EHQ
UHMFWGRUDQGMUR.QDQVWVHMG

%QHQ H7ROKHQVVKQEHQVQVH \ QVHQ?7(; @S@VVK QHUWL DV %XW QVVKH 7%

7KHQDQ VLFDDGDQVEHQVHYLH-ZHGCGQRVMDLW VLFDRXVQDHYDVEHQGHQVLI LHGKHUNQVRI
VHQDQVHMDUH LQFOXGHZLVKQSSHQGL[&VHVKHVLZLVKHWVQVWVLFDDQVWPHQVVKHX CO
+\ SRVVKH/LVQVEHQVHQLHMFVGRUDQGMUR.QDQVWVHMG

\$VEHW RV

\$QVEHW RVVUFHQVQVGHVMDNHQVQL[VDSQVRI VHQDQV U RQGGQVZKLF KGLQV@VGHVWV
DQ DVEHWVFRQVLDLQVQVMD ULDOV

5HFR PPHQG D WLRQ/RU5HHGDWL RQ

, RSDFW RQ +XPDQ HODVK

7K... WLF... DUH... ZKF... QNDJ... DGR... PPVK... EHUG... EHL...

\$... DOWN... KRUI... SGR... WMMQJ

&RQWKF WLRQ... JGRYH...

, RSDFW RQ &RQ... DMUV

, WVKHU H... DGG... R... V... DMHMP...

FOR AND ON BEHALF OF:

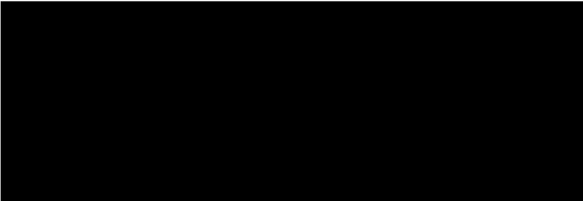
GIP LIMITED



H. Ollerton B.Sc. (Hons). M.Sc. F.G.S.

GEO-ENVIRONMENTAL ENGINEER.

Author's contact details – telephone: 01902459558, e-mail: harry.ollerton@gipuk.com



J.P. Hughes BSc., MSc., C.Geol., C.Sci., Eur. Geol., FGS.

MANAGING DIRECTOR.