

**Advice : HSL-231110105022-379 DO NOT ADVISE AGAINST**

**Your Ref:** PA23/07579

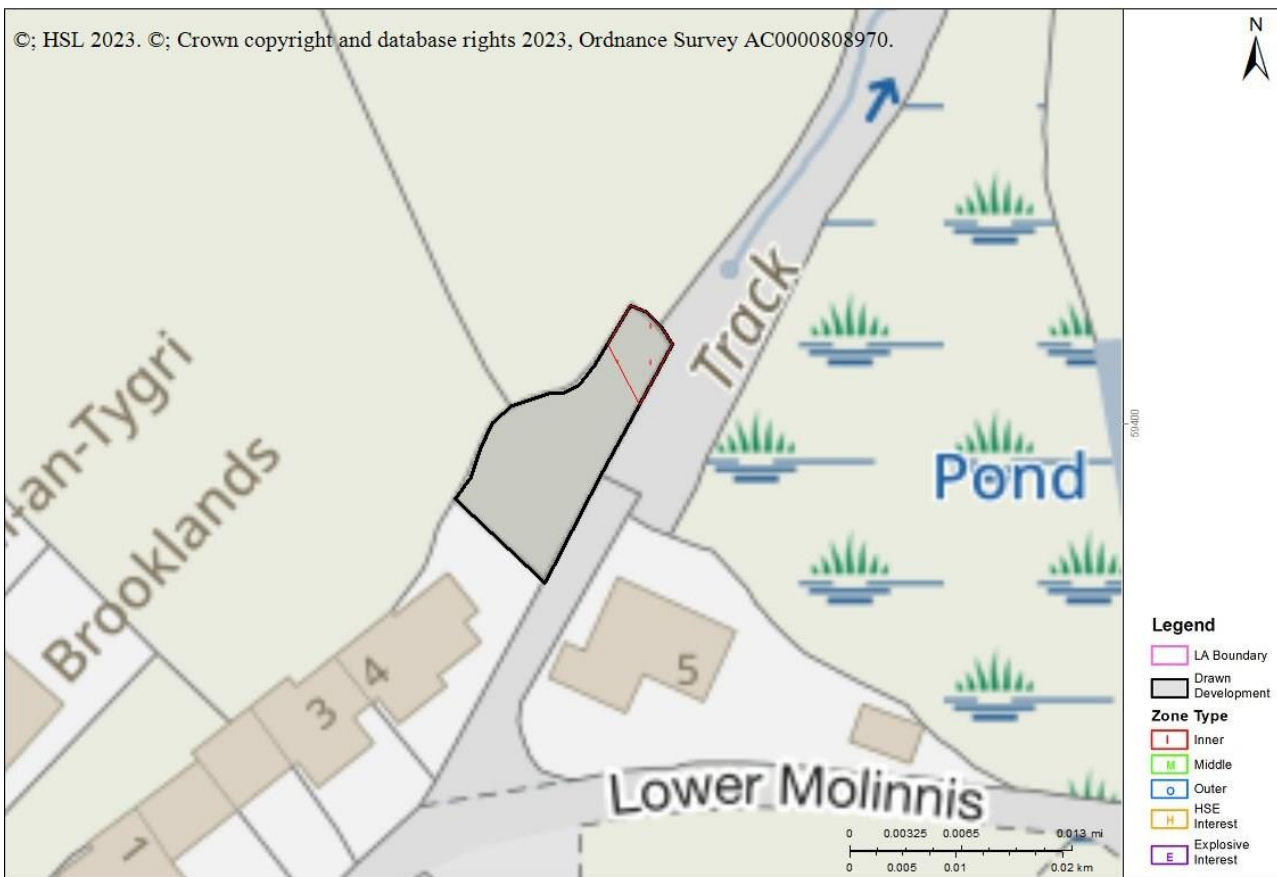
**Development Name:** Land North East Of 3 Lower Molinnis, Lower Molinnis, Molinnis, Bugle, Cornwall, PL26 8QS.

**Comments:** Erection of two storey, two bedroom dwellinghouse.

Land Use Planning Consultation with Health and Safety Executive [Town and Country Planning (Development Management Procedure) (England) Order 2015, Town and Country Planning (Development Management Procedure) (Wales) Order 2012, or Town and Country Planning (Development Management Procedure) (Scotland) Regulations 2013]

The Health and Safety Executive (HSE) is a statutory consultee for certain developments within the Consultation Distance of Major Hazard Sites/ pipelines. This consultation, which is for such a development and is within at least one Consultation Distance, has been considered using HSE's planning advice web app, based on the details input on behalf of Cornwall.

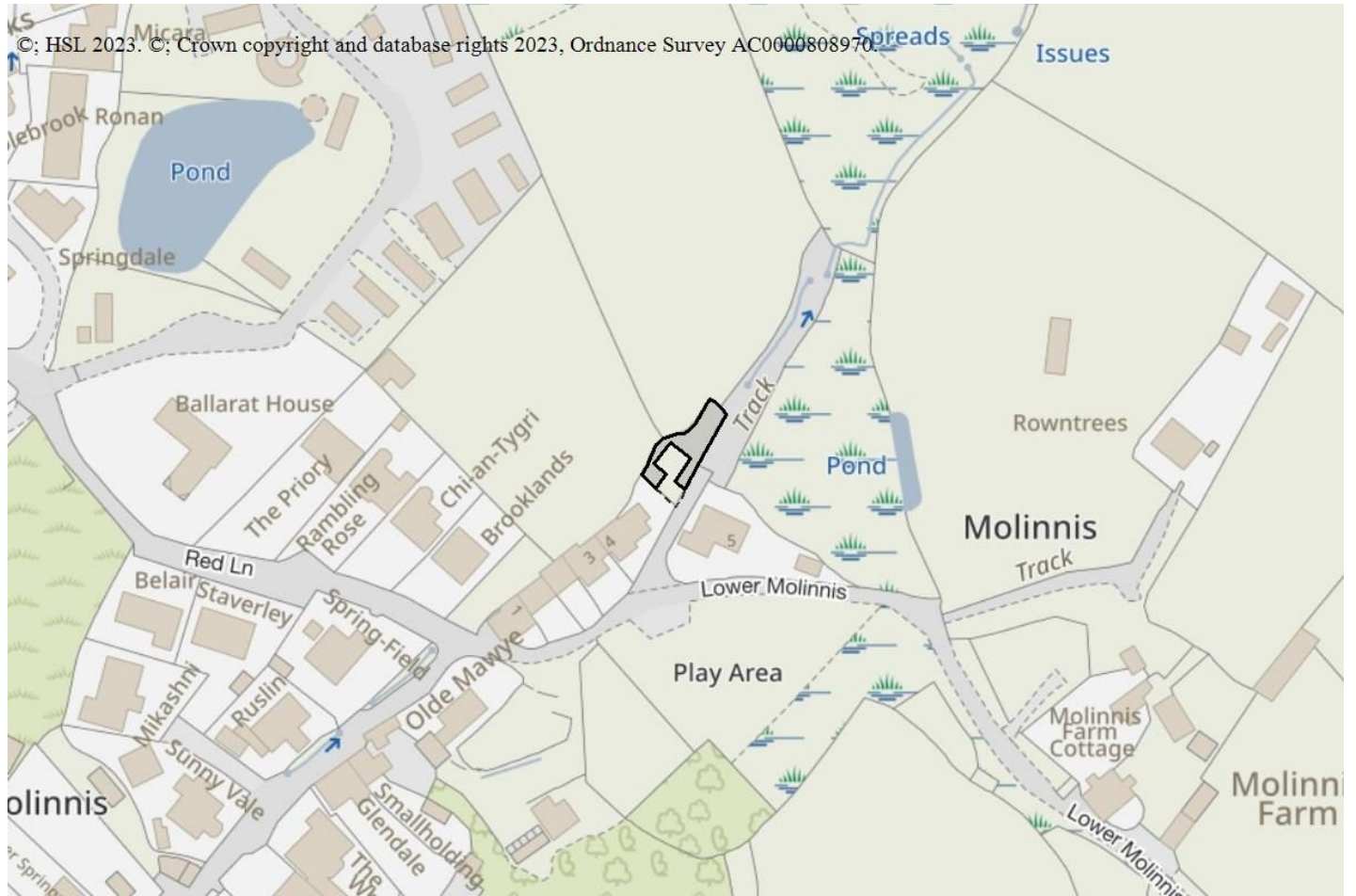
**HSE's Advice: Do Not Advise Against, consequently, HSE does not advise, on safety grounds, against the granting of planning permission in this case.**



**Breakdown:**

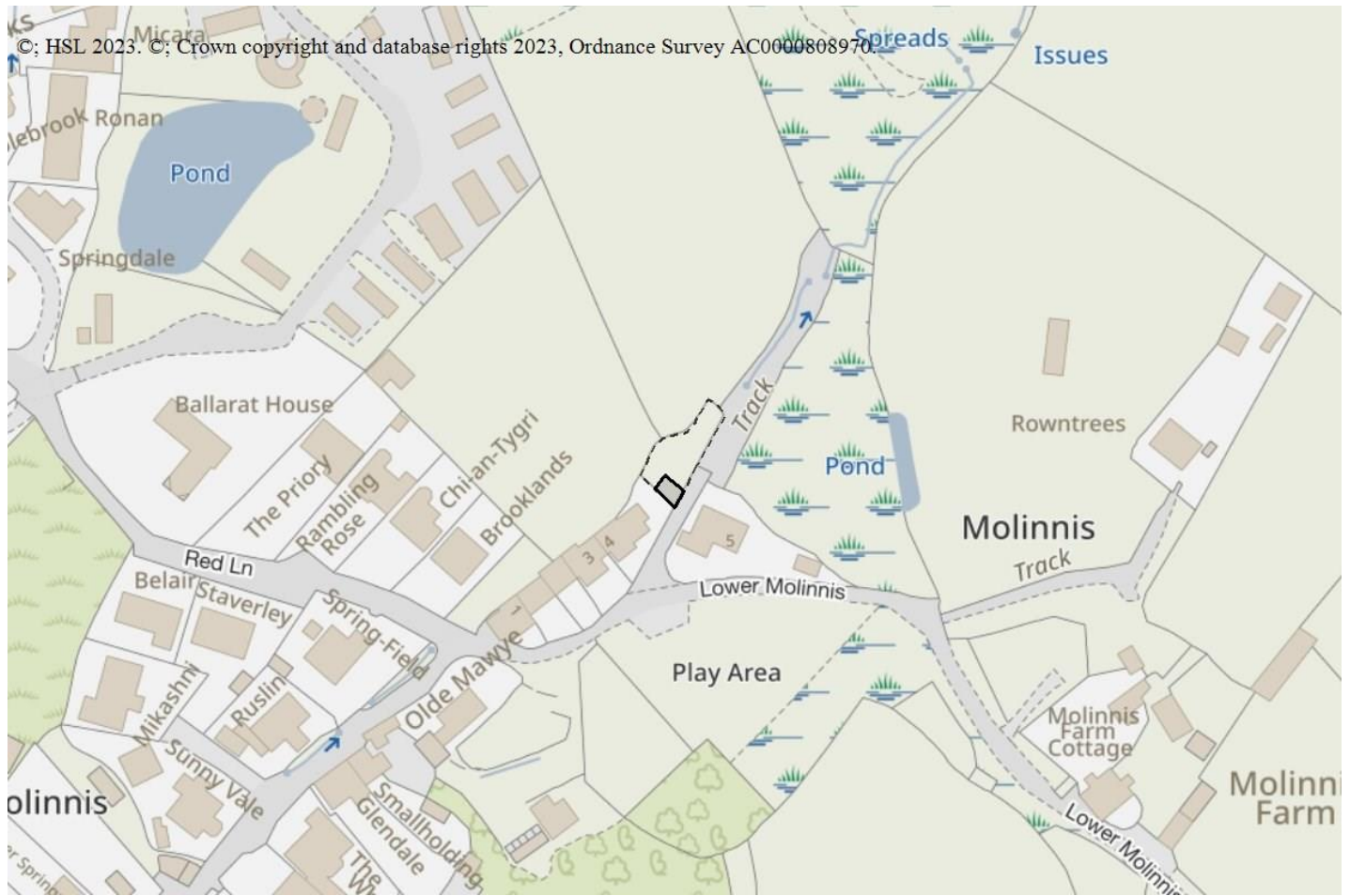
Landscaping : Do Not Advise Against

There are no questions for landscaping



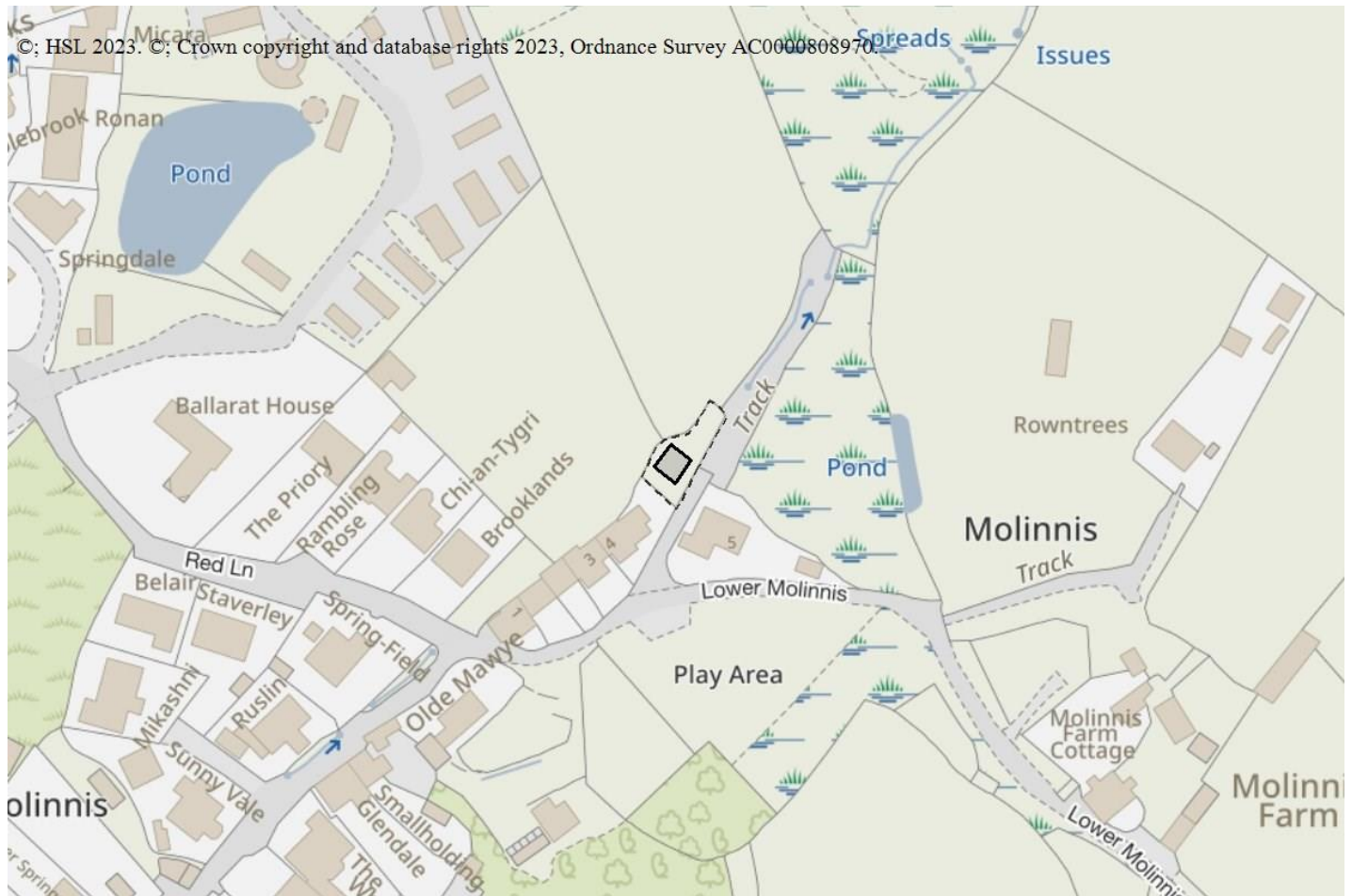
Parking Areas : Do Not Advise Against

Is this a parking area with no other associated facilities, car parks which are part of another development type should be included within that development type Yes



Housing : Do Not Advise Against

How many dwelling units are there (that lie partly or wholly within a consultation distance)? Less than 3



## Pipelines

- 7250\_1518 Wales and West Utilities

As the proposed development is within the Consultation Distance of a major hazard pipeline you should consider contacting the pipeline operator before deciding the case. There are two particular reasons for this:

- The operator may have a legal interest (easement, wayleave etc.) in the vicinity of the pipeline. This may restrict certain developments within a certain proximity of the pipeline.
- The standards to which the pipeline is designed and operated may restrict occupied buildings or major traffic routes within a certain proximity of the pipeline. Consequently there may be a need for the operator to modify the pipeline, or its operation, if the development proceeds.

HSE's advice is based on the situation as currently exists, our advice in this case will not be altered by the outcome of any consultation you may have with the pipeline operator.

This advice report has been generated using information supplied by Linda Wyatt at Cornwall on 10 November 2023.

Note that any changes in the information concerning this development would require it to be re-submitted.

