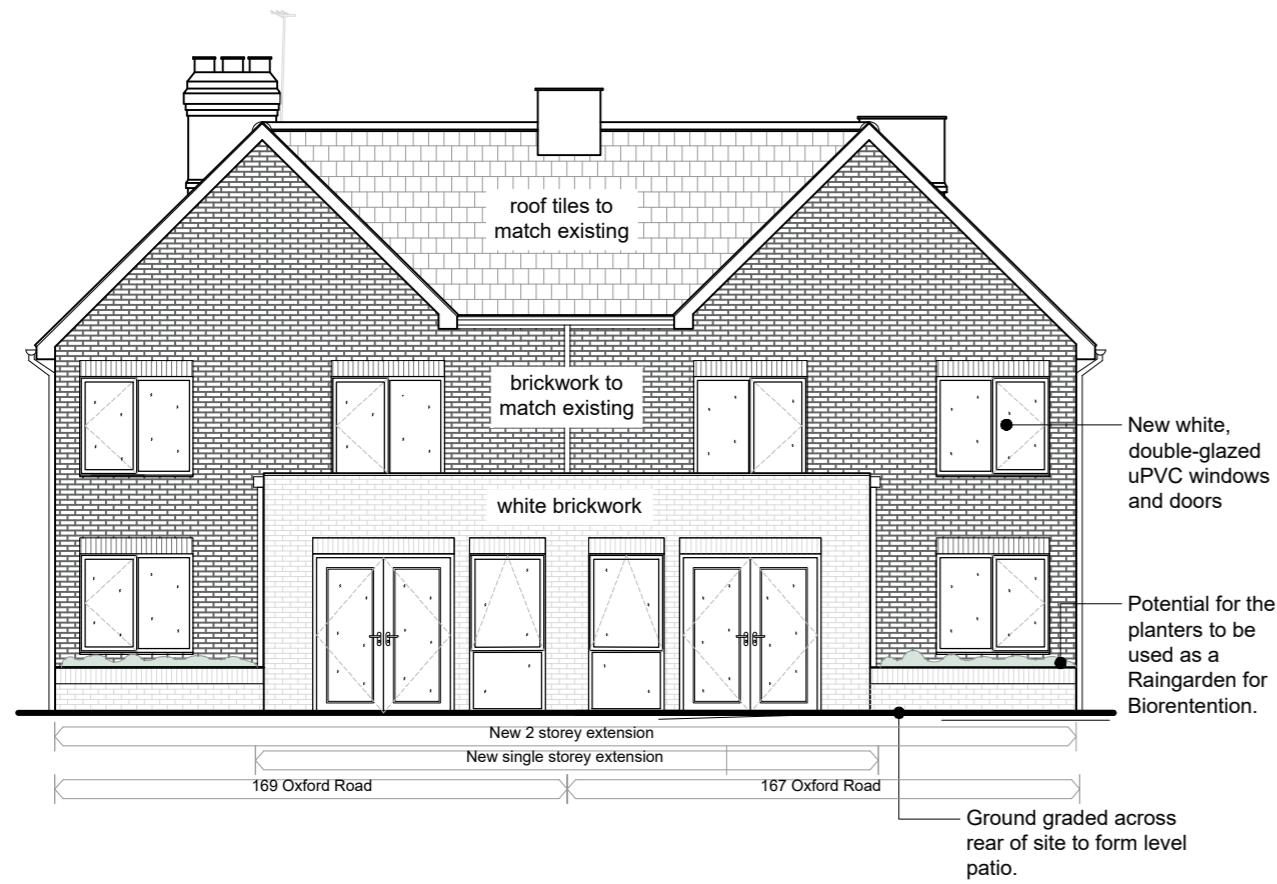


Notes

1. Copyright Jessop and Cook Architects Limited.
2. Do not scale from drawings, all dimensions to be checked on site.

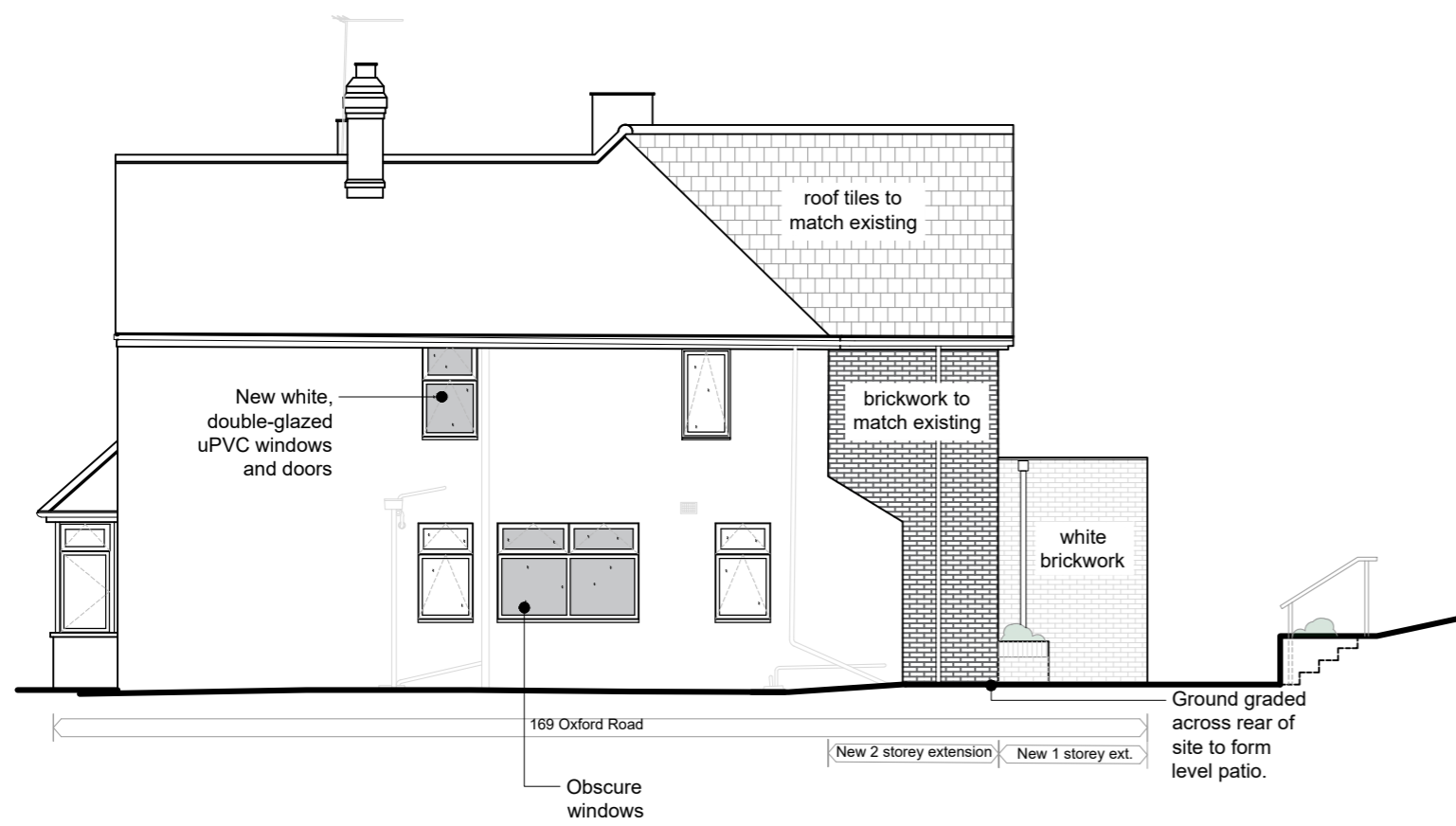
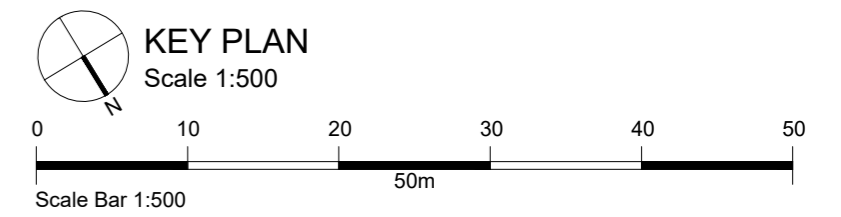
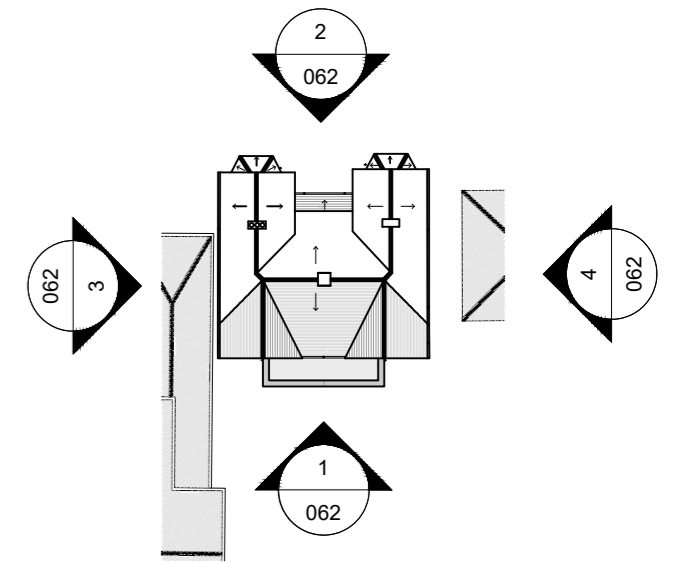
NOTE: An additional planning application has also been submitted for change of use at No. 167 and extension and alterations to No. 167 and No. 169 as shown here.



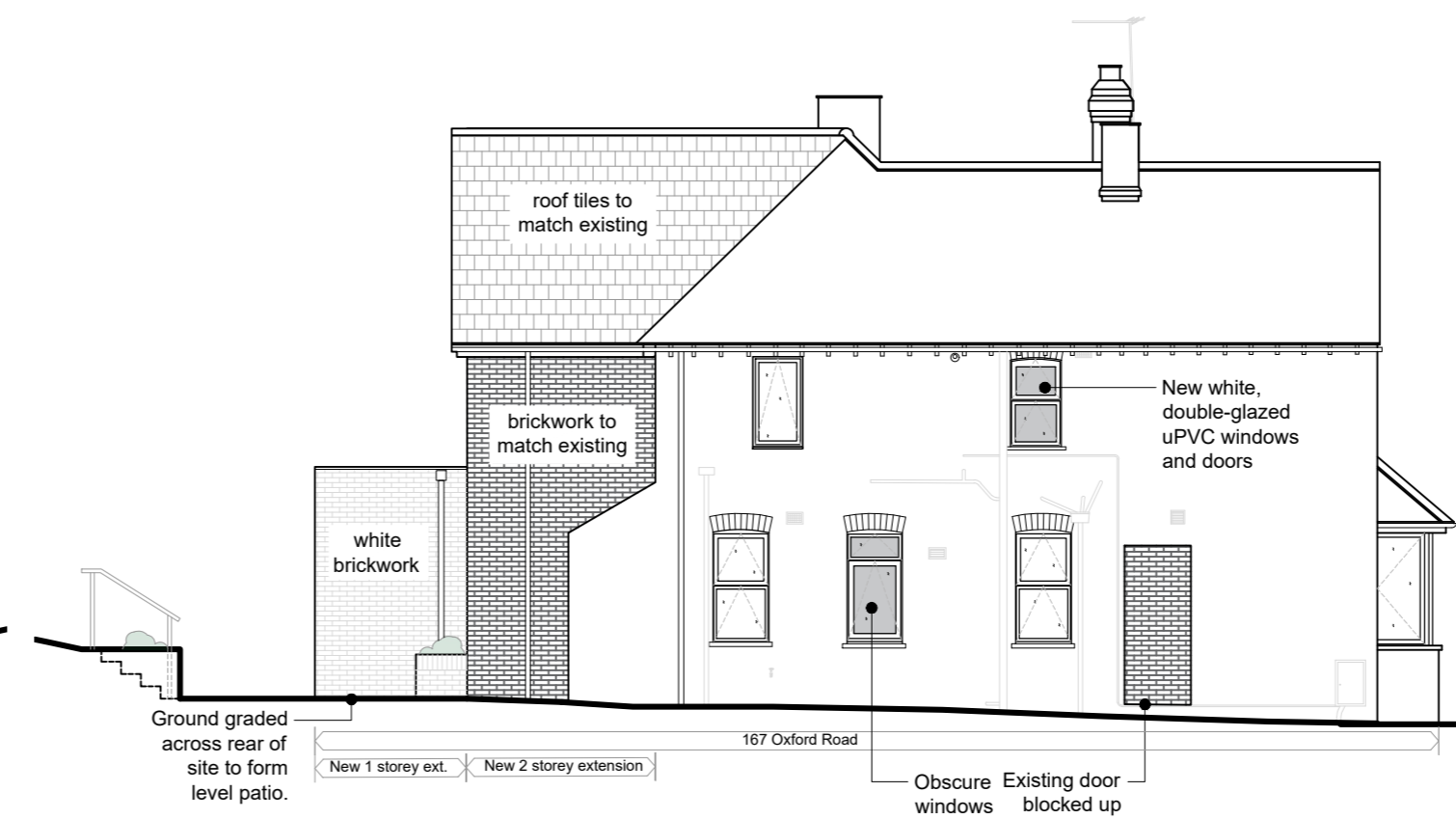
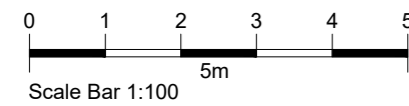
ELEVATION 01. REAR
Scale 1:100



ELEVATION 02. FRONT
Scale 1:100



ELEVATION 03. SIDE
Scale 1:100



ELEVATION 04. SIDE
Scale 1:100

B	20.10.23	Planning Issue 2	BT
A	19.10.23	Planning Issue	BT

Revisions

PLANNING ISSUE

167 & 169 Oxford Road
Cowley
Oxford, OX4 2

for
Emmaus Oxford

Drawing title
Proposed Elevations

JESSOP & COOK ARCHITECTS

WEST WING, SECOND FLOOR
9 PARK END STREET
OXFORD OX1 1HH

T: 01865 591212
E: info@jessopandcook.co.uk
www.jessopandcook.co.uk

Scale at A2	Date	Drawn by	Checked
1:100/500	May 2023	RG	

Drawing number	Revision
P.1631_062	B