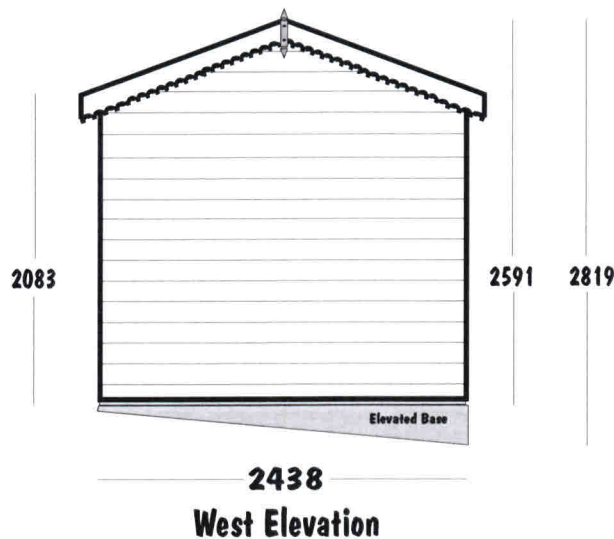
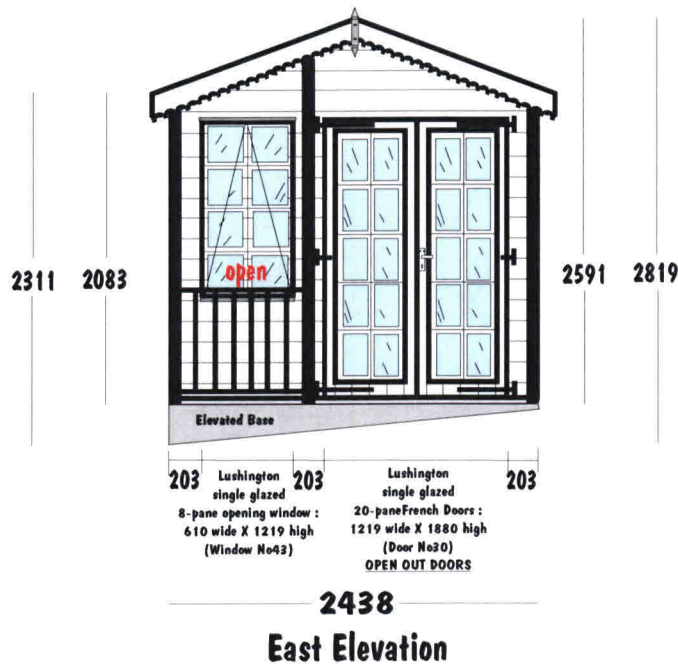


Existing Lushington Farringford Summerhouse to be Retained

Andrew Reed
 'At Last'
 Cross Street
 Brading
 Isle of Wight PO36 0DL

Thursday, 16th November 2023

Overall Width (front/back gables)	2438mm	Roofing Material Black polyester mineral felt
Overall Depth including veranda (sides)	3658mm	Side Wall Cladding 18mm t&g timber shiplap cladding (including a 3/4" interlocking joint)
Overall external height at the eaves including base	2311mm	Floor Construction 20mm t&g floor boards secured to 3" X 2" floor joists
Overall external height at the ridge including base	2819mm	Foundations 100mm - 225mm reinforced concrete base
Internal height at the eaves	1905mm	Drainage Guttering and a down-pipe to both sides of the roof eaves
Roof pitch	22 1/2°	Doors/Windows Stained timber doors and windows, Georgian style
		Ventilation Two top hung opening casements



Scale : 1:50