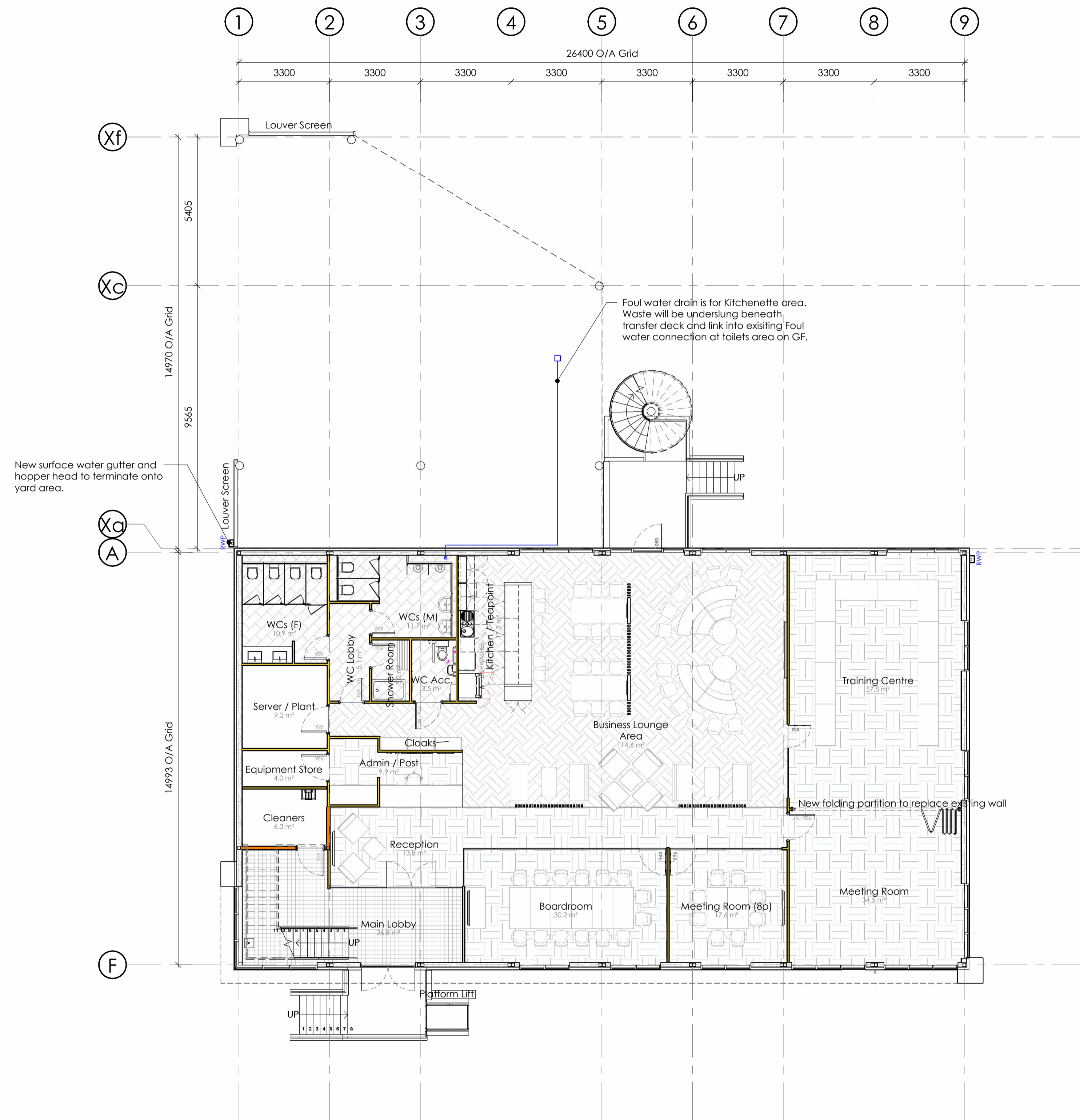


0. GROUND FLOOR	
Admin / Post	9.9 m <sup>2</sup>
Boardroom	30.2 m <sup>2</sup>
Business Lounge Area	114.6 m <sup>2</sup>
Cleaners	6.3 m <sup>2</sup>
Cloaks	0.5 m <sup>2</sup>
Equipment Store	4.0 m <sup>2</sup>
Kitchen / Teapoint	17.2 m <sup>2</sup>
Main Lobby	26.8 m <sup>2</sup>
Meeting Room	34.5 m <sup>2</sup>
Meeting Room (8p)	17.4 m <sup>2</sup>
PPE Store	1.0 m <sup>2</sup>
Reception	13.8 m <sup>2</sup>
Server / Plant	9.2 m <sup>2</sup>
Shower Room	3.0 m <sup>2</sup>
Training Centre	57.5 m <sup>2</sup>
WC Acc.	3.5 m <sup>2</sup>
WC Lobby	5.1 m <sup>2</sup>
WCs (F)	10.9 m <sup>2</sup>
WCs (M)	11.7 m <sup>2</sup>



rev	description	by	chk	date
P04	RWP and notes added	KJ	IBL	12/10/23
P03	First floor extension support columns rescheduled	CJ	IBL	21/09/23
P02	Cleaners rescheduled. All WCs modified. Extension gridlines added. Scale updated.	CJ	IBL	07/09/23
P01	First Issue	CJ	IBL	08/08/23



Tel: 01964 626761  
 enquiries@integrabuildings.co.uk  
 www.integrabuildings.co.uk  
 client:

**Integra Buildings Ltd**

project:

**Head Office Extension**

title:

**Ground Floor GA Plan Extension**

date: 03/08/23 design lead: IBL checked by: IBL  
 project ref: EXTENSION scale @ A1  
 status: PRELIMINARY

drawing ref: HQ-1100 P04  
 EXTENSION - IBL - HQ - 00 - DR - Y - 1100

Ground Floor Plan Extension  
 1 : 100

